

Parent Child Development Services: FY 2012–13

The Parent-Child Development Services (PCDS) program provides home visitation services and age appropriate parent and young child playgroups and parent education. PCDS uses the Parents as Teachers (PAT) curriculum which is an evidence-based practice designed to teach parenting skills and knowledge. PAT been shown to increase parent knowledge of early childhood development, improve parenting practices, provide early detection of developmental delays and health issues and increase children's readiness for school.¹

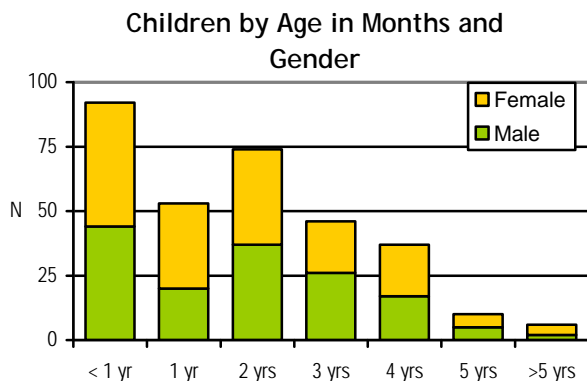
Unduplicated Number Served

Total:	1,334
Children:	777 ²
Adults:	557
Households:	520

Demographics, services and outcome summaries describe 318 children, 226 adults, and 206 households who exited services during 2012-13.

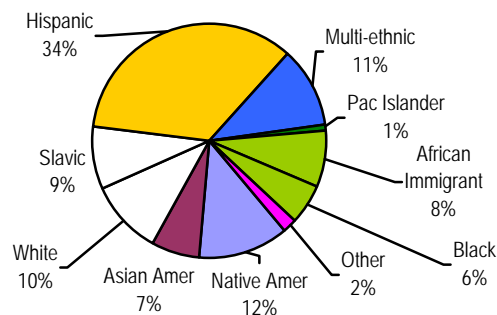
Demographics

- Almost half of the children (46%) were less than 2 years old when they began services; a little under one third of the children (29%) were less than 1 year old. The average age was 26.6 months. The program served an approximately equal number of males (48%) and females (52%).

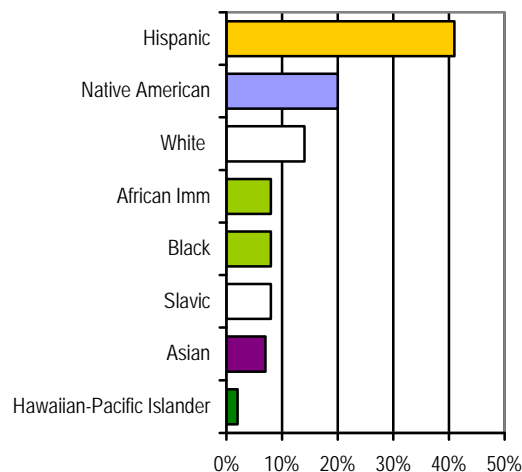


90% of the children were of color or from a culturally-specific community

Race/Ethnicity of Children



Race/Ethnicity: Unpacking Multi-Ethnic³



¹ <http://www.nrepp.samhsa.gov/ViewIntervention.aspx?id=221>

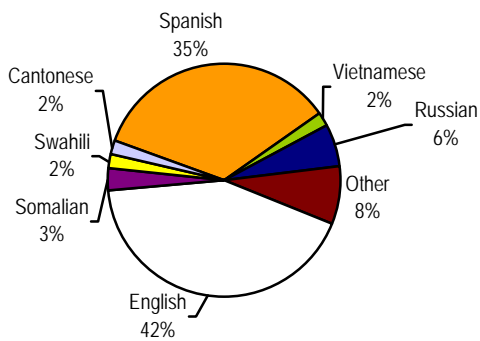
² The target for the number of children served was 611.

³ Participants who check more than one race or ethnicity are considered multi-ethnic in the pie chart showing race/ethnicity. In this bar chart the multi-ethnic category is removed and each race ethnicity is added to the single category totals. This full depiction of all races results in an over-count in this figure. Curry-Stevens, A., Cross-Hemmer, A., & Coalition of Communities of Color (2010). Communities of Color in Multnomah County: An Unsettling Profile. Portland, OR: Portland State University.

Parent Child Development Services Outcomes: FY 2012–13

- Over half of the adults (58%) were not native English speakers. The most common primary languages were Spanish (35%), Russian (6%), Somali (3%), Vietnamese (2%), Swahili (2%), and Cantonese (2%).

Primary Language Spoken at Home

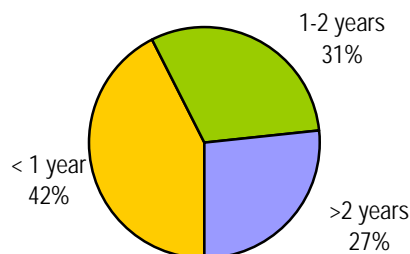


- The average age of adults was 30.5; ranging from 18 to 69 years. Most of the participants were female (86%).
- Almost one half (46%) of the adults had not completed high school and did not have a GED. Over one third had a high school diploma (27%) or GED (11%). Almost one in five (15%) had some post secondary education either a degree (4%), some college (12%) or vocational school (1%).
- Most of the households included two parents (62%); over one third (36%) included just one parent and 2% of the families were other forms of blended families.

Services

Length of service is reported on the 318 children who exited services during the year⁴. On average, children participate in PCDS services for 18.5 months. Over half of the children (58%) participated in services for one year or longer; 27% participated for two or more years. Length enrolled in services ranged from 1 day to 5.8 years.

Length in Services

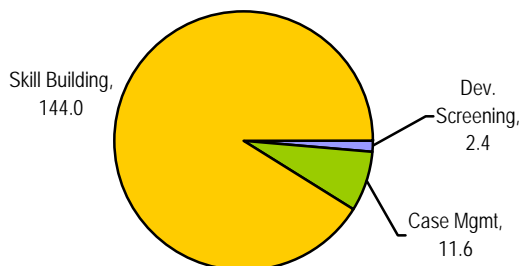


Service amounts are reported on the 206 households that exited during the year. Averages per household include:

- 19.8 home visits; 1.1 home visits per month.
- 158.0 total hours of other services; 8.7 hours per month

Most of the other service hours consisted of skill building with families.

Average Service Hours by Family



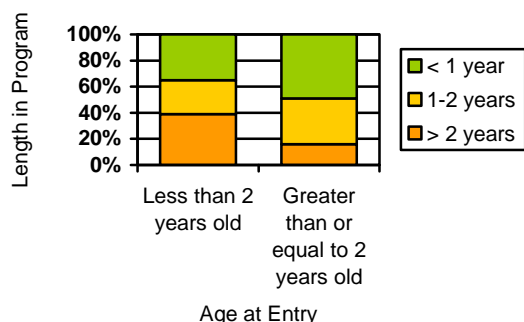
Children's Age at Entry and Length in Services

- There is a greater probability ($p < .01$) that younger children will stay in the program longer than older children: 66% of children who enter services before they turn 2 years old stay in the program for one year or longer compared to 51% of children who enter services after they turn 2 years old.

⁴ The 236 families who were still participating in services at the end of the fiscal year had been open an average of 2.1 years.

Parent Child Development Services Outcomes: FY 2012–13

Length in Services by Age at Entry (Cases Closed during 2012/13)



Outcomes

Outcomes are reported on the 206 families and 318 children that exited during the year.

Children's Readiness for School

- 96% of children had up-to-date immunizations
- 98% of children were screened for normal growth and development
- 100% of children who were not at age appropriate development were referred for early intervention services (N=16/16)
- 64% of children aged 3 to 4 years at exit were referred to Head Start or another preschool program at exit
- 57% of children aged 3 to 4 years were both referred and actually enrolled in Head Start or another preschool program at exit; an additional 5% were on the waiting list.
- 73% of parents with children aged 5 years and up were helped to connect to their child's school

Parent Satisfaction

Almost two thirds of parents completed satisfaction surveys (64%)

- 97% of parents reported that they gained new skills from program participation (n=144)
- 99% of adults said services were helpful (N=145)
- 99% of adults said staff demonstrated cultural sensitivity (N=143)

- 100% of adults said they had access to knowledgeable resources (N=145)

Summary

1. The program is serving its intended population of children of color and parents whose primary language is not English.
2. Research from the national Parents as Teachers evaluation demonstrates that two years of home visitation plus one year of preschool helps children in poverty overcome early educational disadvantages.
 - Children who start services at PCDS at a younger age, are more likely to have longer lengths of stay in services. This year fewer children started services before their first birthday (29% compared to 37% last year).
 - Well over half of the families (57%) stay in the program for at least one year; over one fourth (27%) stay for at least two years. Although the numbers are down slightly from last year, this represents a positive trend as can be seen in the table below.

Length Child and Parent(s) Participate in Services at PCDS

	At least 1 year	2 or more years
2009-10	50%	15%
2010-11	49%	18%
2011-12	59%	36%
2012-13	57%	27%

3. PCDS had positive outcomes in helping to make sure children are up-to-date on immunizations, developmentally screened and referred to early intervention services if indicated.
4. Parent surveys at exit are very positive.
5. Program staff helped children with transitions to new educational opportunities. Almost two thirds (64%) of children aged 3 or 4 years old were referred to Head Start or another preschool at exit; 57% were referred and actually enrolled. Almost three fourths (73%) of parents of 5 year olds were helped to connect to their child's kindergarten.

Recommendations

1. Continue to increase the percent of children who start services when they are under 2 years old in order to maximize the number of children who receive at least 2 years of PAT services.
2. Continue to increase the percent of 3 and 4 year olds who are referred to and enrolled in Head Start or other preschool at exit.

*For more information about this report contact
Linda Magnuson, linda.magnuson@multco.us.*