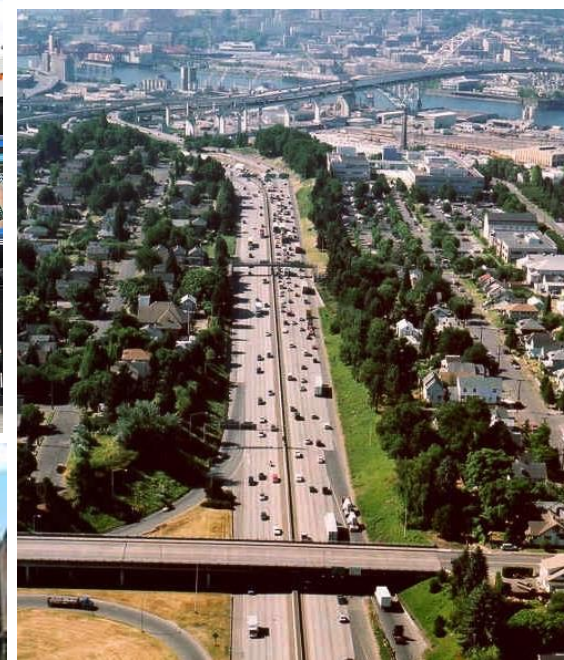
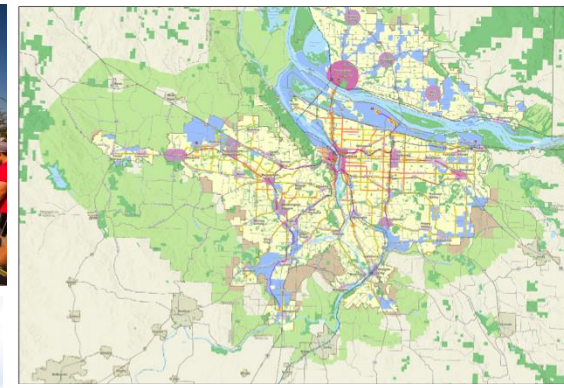


2023 Regional Transportation Plan update

East Multnomah County
Transportation Committee
TAC

November 3, 2021

Kim Ellis, RTP Project Manager



What is the Regional Transportation Plan? (RTP)

20+ year transportation plan

- Required by federal law and according to federal regs
- Required under Oregon's statewide planning goals
- Links land use and transportation
- Guides local transportation plans under statewide goals
- Updated every 5 years



2018 Regional Transportation Plan

*A blueprint for the future of transportation
in the greater Portland region*

Adopted December 6, 2018

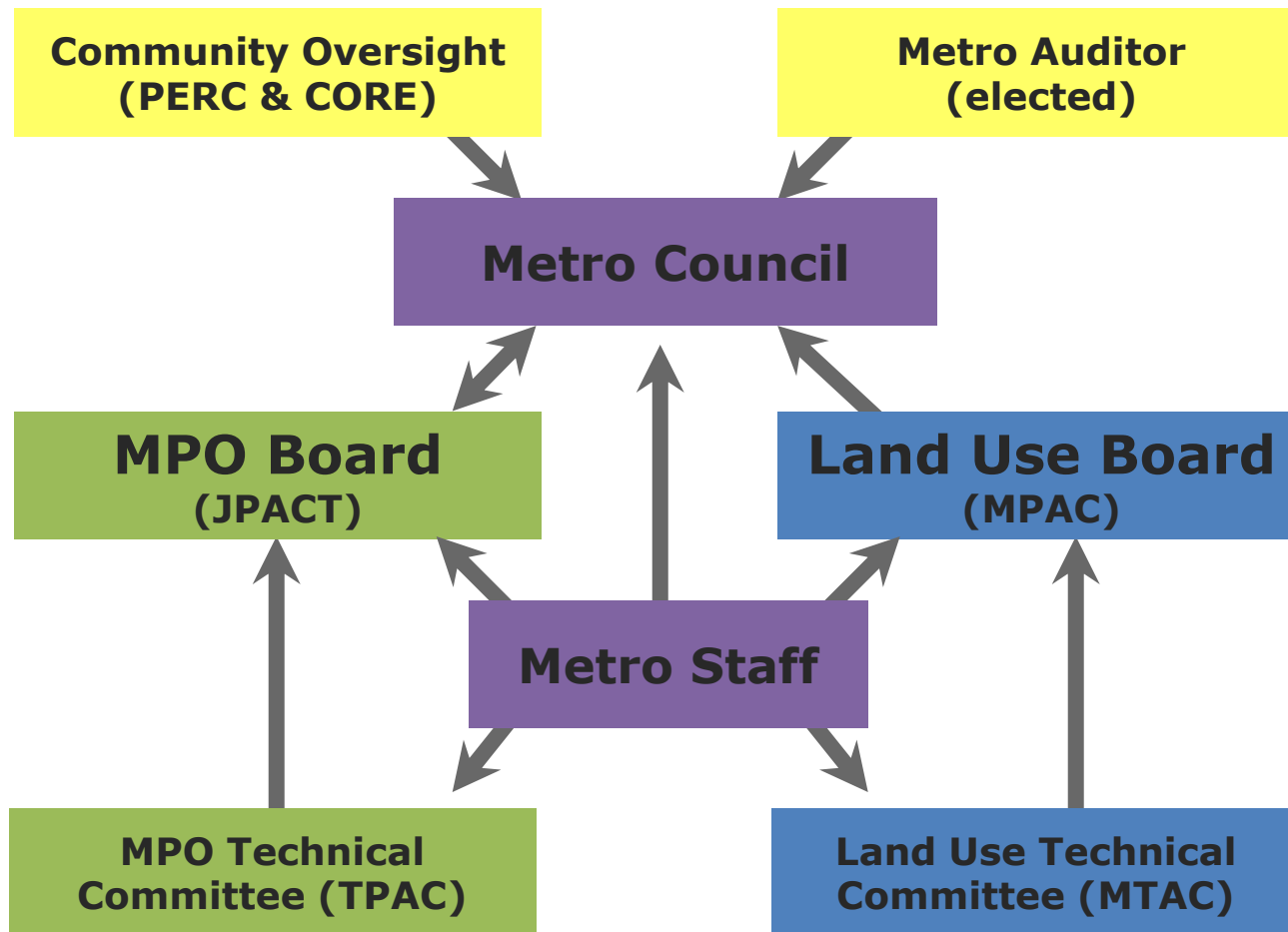
oregonmetro.gov/rtp

Why is it important?

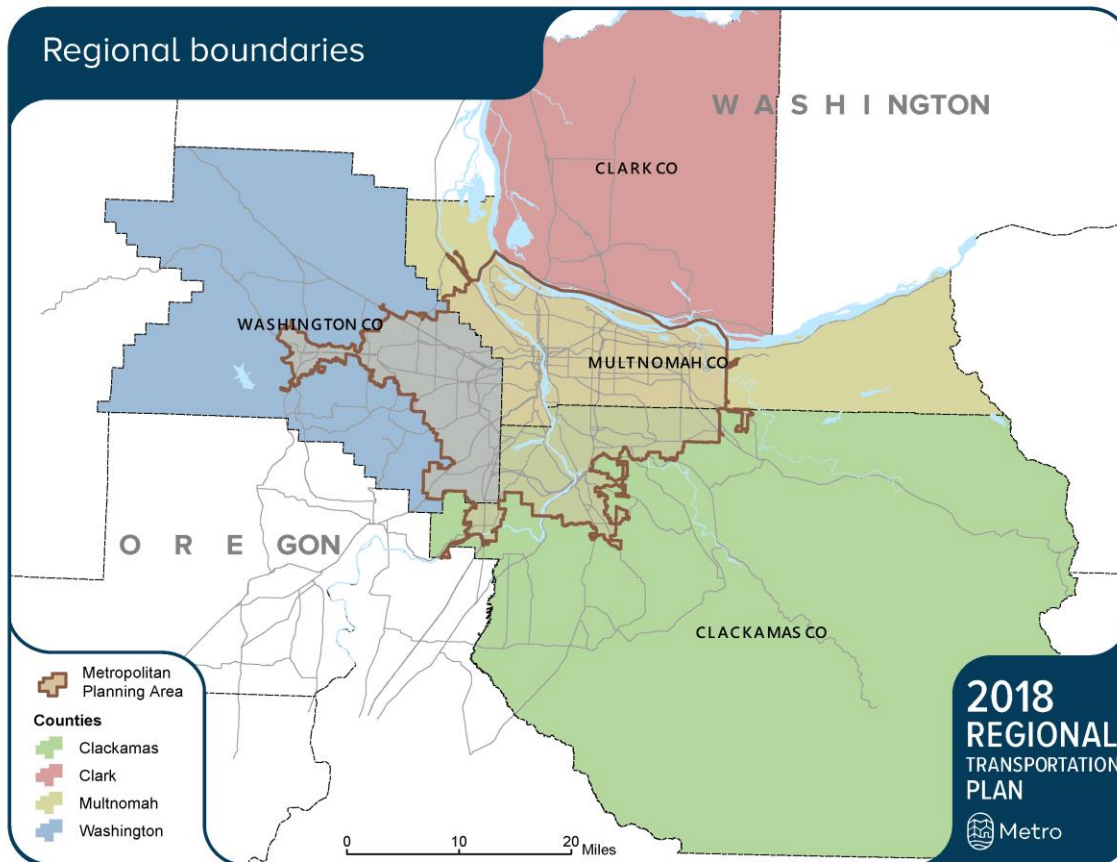
- Blueprint to guide investments in the region's transportation system
- Sets the stage for what communities will look like in the future
- Coordinates local, regional, and state investment priorities and actions
- Projects must be in the RTP to be eligible for federal and some state funding



Regional decision-making process



Metropolitan Planning Area



**1.6 million people
(today)**

**More than 2 million
people (by 2045)**

24 cities

3 counties

Bi-state region

Note: The MPA boundary will be updated to reflect the 2020 Census.

A shared regional system

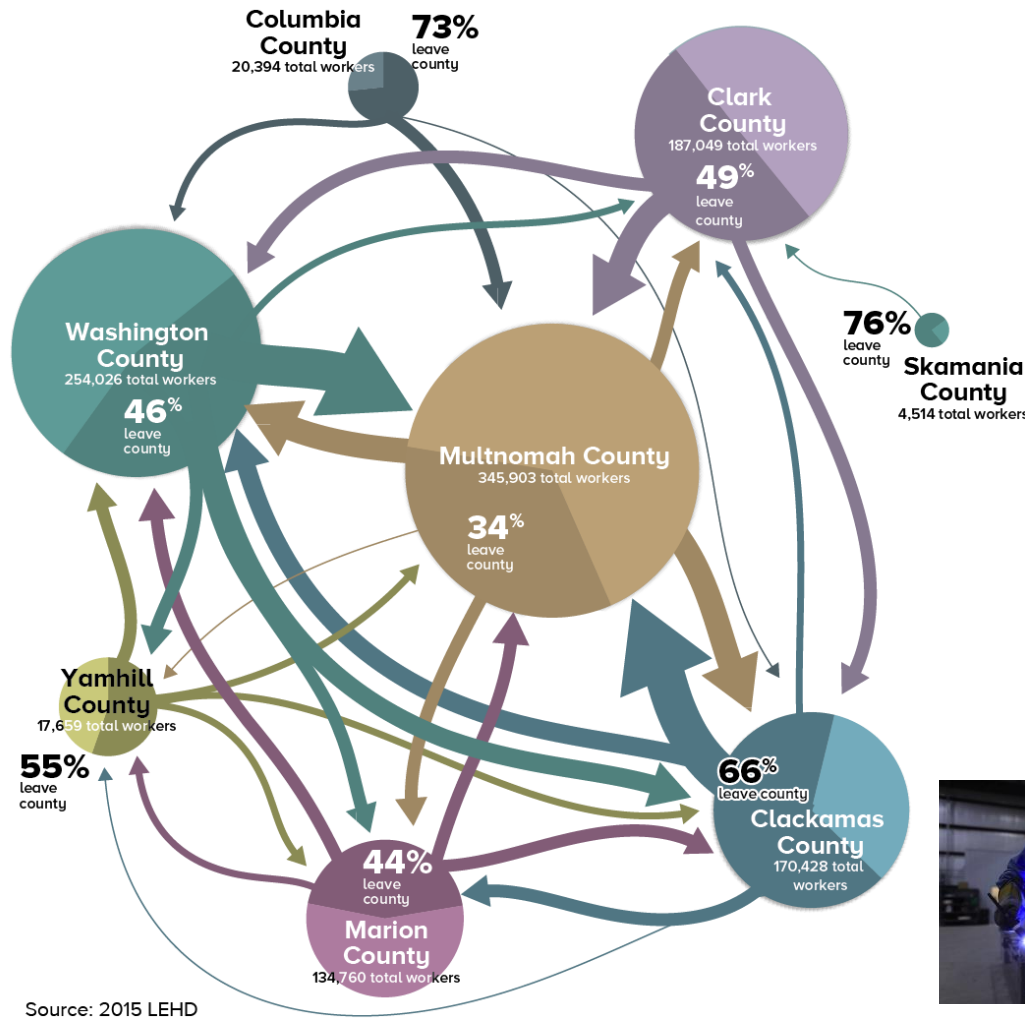


Donald from Forest Grove

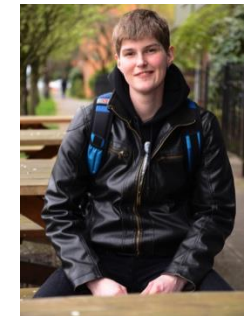


C.J. from Tualatin, with his daughter

Robert and Becky from SW Portland



Michael from Gresham



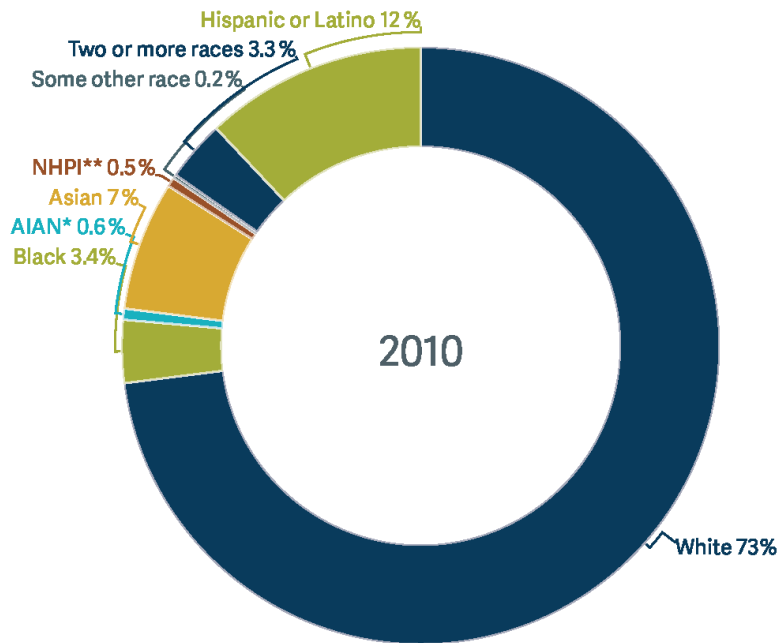
Chris from SE Portland



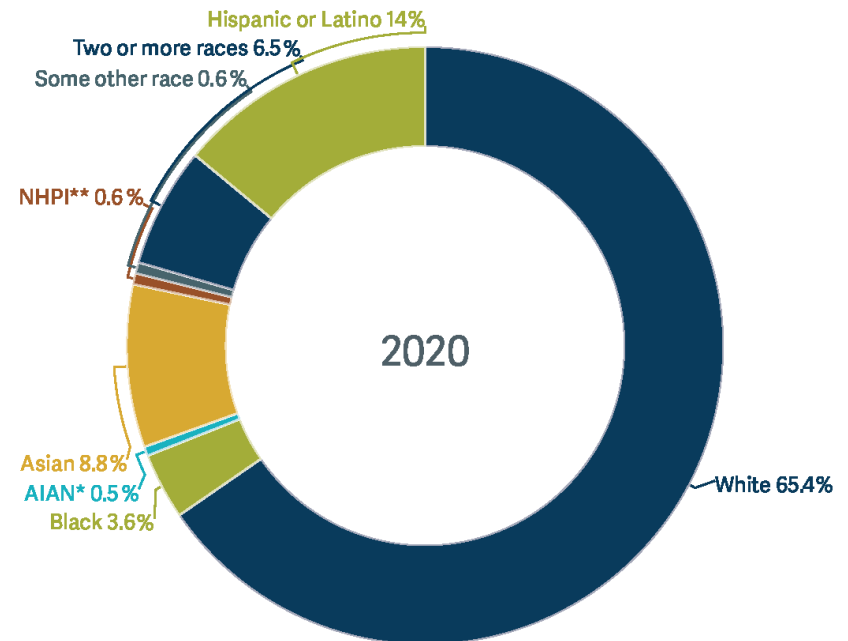
Bob from Milwaukie

Our population – and communities - continue to grow and change

People living within the Portland Metropolitan Planning Area (MPA) boundary, 2010 and 2020



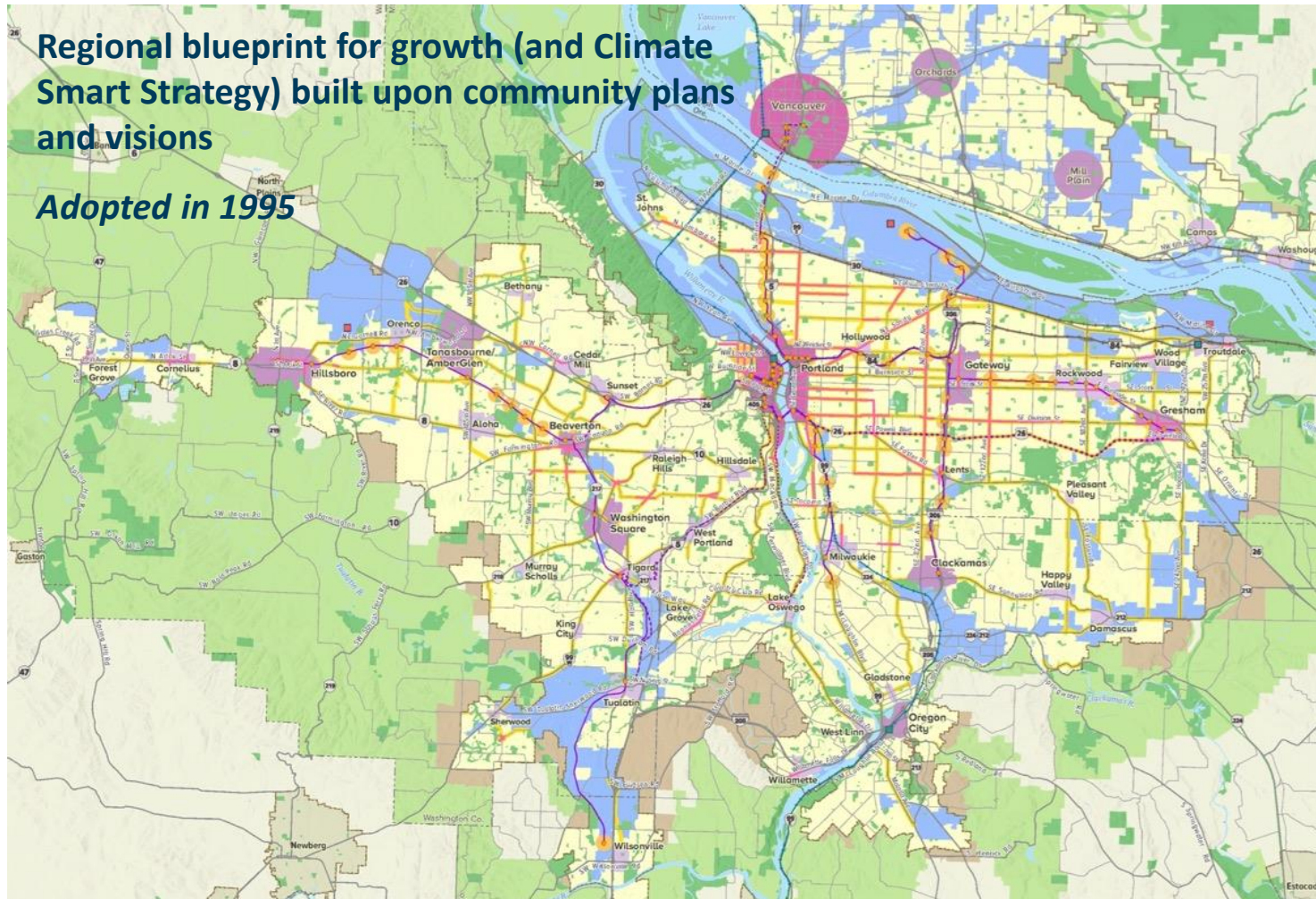
*AIAN: American Indian or Alaskan Native
**NHPI: Native Hawaiian or Pacific Islander



*AIAN: American Indian or Alaskan Native
**NHPI: Native Hawaiian or Pacific Islander

Source: U.S. Census

2040 Growth Concept is our foundation



Regional Transportation Plan

Regional Transportation Plan vision:

"In 2040, everyone in the Portland metropolitan region will share in a prosperous, equitable economy and exceptional quality of life sustained by a safe, reliable, healthy and affordable transportation system with travel options."



Vision for a complete and connected system

2040-based outcomes provide broader policy lens

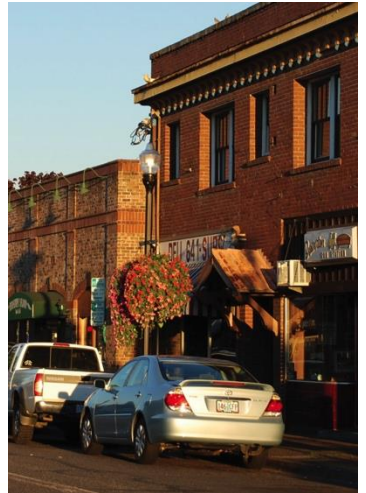
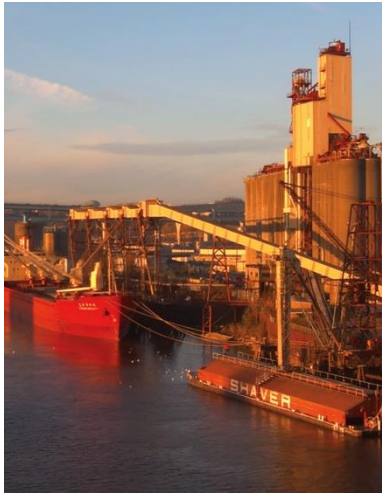
Defines a finish line

Emphasizes multimodal solutions and making the most of past investments

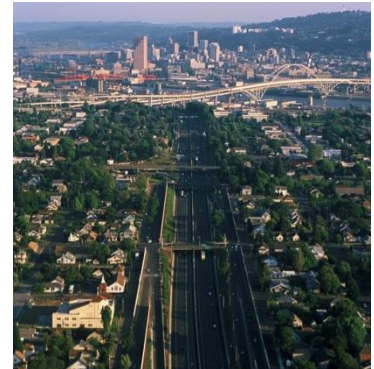
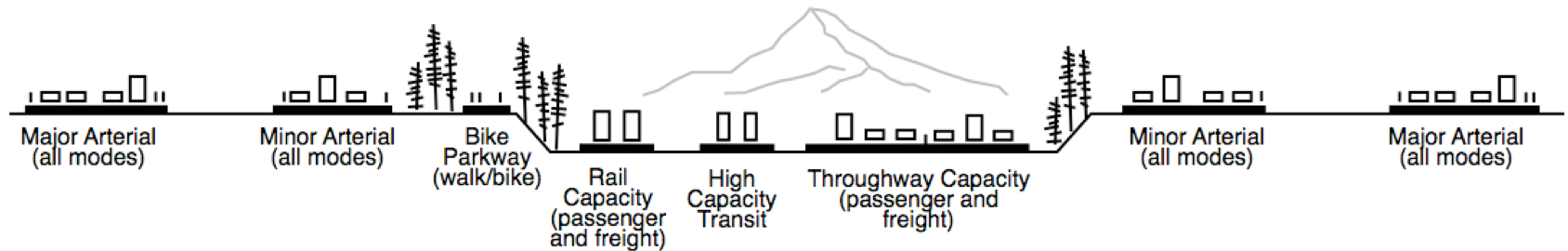
Defines aspirational policy targets to guide investments to achieve vision and monitor progress



Connecting people to the places they need to go



Expanding multimodal travel options in the region's major travel corridors



Outcome-based Regional Transportation Plan



2018 Regional Transportation Plan

*A blueprint for the future of transportation
in the greater Portland region*

Adopted December 6, 2018

oregonmetro.gov/rtp

2018 RTP Priority Policy Outcomes



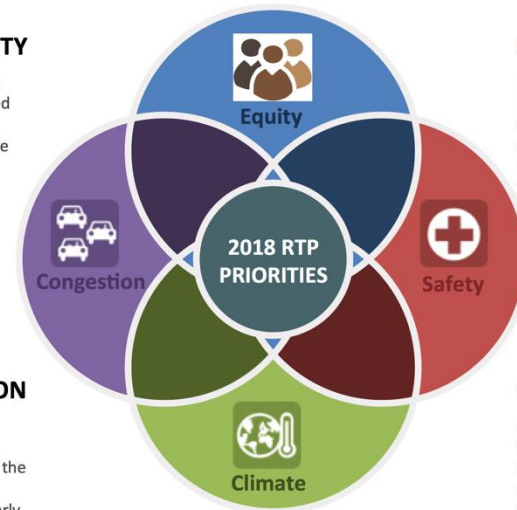
EQUITY

Reduce barriers and disparities faced by historically marginalized communities, particularly for communities of color and people with low income.



CONGESTION

Manage travel demand and increase use of travel options to make travel more reliable on the region's busiest roadways and regional transit routes, particularly for communities of color and other historically marginalized communities.



SAFETY

Reduce fatal and severe injury crashes to move the region as quickly as possible toward Vision Zero, particularly for communities of color and other historically marginalized communities.

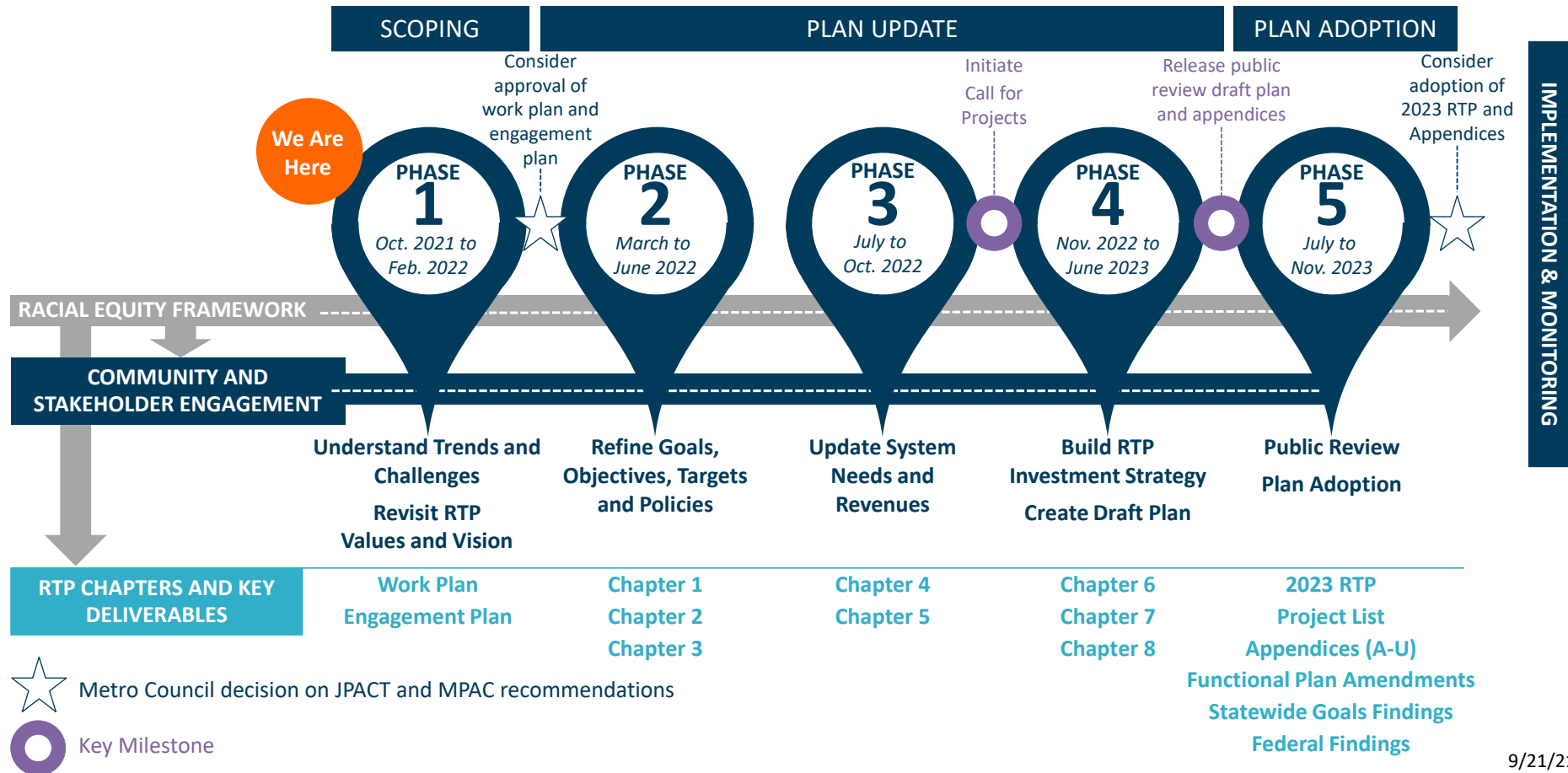


CLIMATE

Reduce greenhouse gas emissions from cars and small trucks to reduce the impacts of climate change, particularly for communities of color and other historically marginalized communities.

Summarized from the 2018 Regional Transportation Plan (Chapters 3 and 6)

Proposed process for 2023 RTP Update



Proposed engagement approach



- Leads with racial equity
- Inclusive
- Transparent
- Accessible
- Outcomes-focused
- Centered on people's lives and experiences



Understand trends, values, priorities and vision for future

October 2021 to Feb. 2022

What: Illustrate trends and challenges; seek input on values, priorities and vision for the future

Who: Community members, community leaders, business leaders, jurisdictional partners, Tribes, resource agencies

How: Existing committees, stakeholder interviews, focus groups, on-line survey, Metro Council discussions, special JPACT workshop, Community Leaders Forum, climate best practices panel, Consultation meetings



Decision: Council and JPACT consider approval of the work plan and engagement plan (by Resolution)



Update Goals, Objectives, Targets and Policies

March to June 2022

What: Use values and priorities to refine goals, objectives and targets; update selected policies related to congestion pricing, mobility, urban arterials, resilience, green infrastructure and other topic areas identified in Phase 1; develop criteria for project list updates

Who: TPAC, MTAC, JPACT, MPAC and the Metro Council

How: Metro technical and policy advisory committees, Metro Council discussions, other TBD engagement activities

 **Milestone:** Draft updated Chapter 2 and Chapter 3 to guide plan update



Update Needs and Revenues

July to October 2022

What: Document regional transportation needs and disparities; update forecast of revenues anticipated to pay for needed investments; set funding level for the RTP investment strategy

Who: Community members and community leaders (needs) and jurisdictional partners (revenues)

How: TPAC, JPACT and Metro Council discussions and other TBD engagement activities

 **Milestone:** Metro Council and JPACT initiate Call for Projects



Build RTP Investment Strategy

November 2022 to June 2023

What: Update RTP project list, seek public feedback on draft list, evaluate performance and consider potential project list revisions

Who: Community members, community leaders, business leaders and jurisdictional partners

How: Metro technical and policy advisory committees, county coordinating committees', Metro Council discussions, and other TBD engagement activities

 **Milestone:** Metro staff release draft 2023 RTP, appendices and financially constrained project list for public review



Public Review and Adoption

July to November 2023

What: Seek feedback on updated draft plan, appendices and projects

Who: Community members, community leaders, business leaders, jurisdictional partners, Tribes, resource agencies

How: Metro technical and policy advisory committees, county coordinating committees', Metro Council discussions, Community Leaders Forum, online open house, Consultation meetings, public comment period and hearings



Decision: Council and JPACT consider approval of the 2023 RTP and appendices (by Ordinance)

Next steps for shaping the work plan and engagement strategy

- **October to December 2021** Metro Council and regional advisory committees discuss values, priorities and desired outcomes for update
- **November 2021 to January 2022** Outreach to further shape work plan and engagement strategy
- **January to February 2022** Metro Council and regional advisory committees discuss draft work plan and engagement strategy
- **March 2022** JPACT and Metro Council consider approval of work plan and engagement strategy (by Resolution)

What We've Heard From Council

- **Focus on people and values**
- **Advance** Metro's commitment to **racial justice, climate leadership and resilient communities**
- **Improve understanding** of regional transportation **needs and disparities and transportation funding**
- Use **storytelling and inclusive engagement** strategies combined with **quantitative data**
- **Update process for updating and prioritizing the project list**

Lead with racial equity.

Prioritize equity, climate, safety and mobility outcomes while advancing other goals and outcomes.

Better address safety and equity issues on region's urban arterials.

Accelerate implementation of the Climate Smart Strategy.

Bring to life the experiences and needs of people living and working in the region.

Identify underserved communities and barriers to meeting daily needs.

Better manage and operate the existing transportation system.

Discussion and feedback

1. Do you have feedback on the proposed process?
2. What policy outcomes are most important for this update to address?
3. Do you have suggestions on outreach and engagement for update?

Learn more about the **Regional Transportation Plan** at:



Metro

Kim Ellis, AICP

RTP Project Manager

kim.ellis@oregonmetro.gov

oregonmetro.gov/rtp

2018 RTP Goals

WHAT WE WANT TO ACHIEVE

Vibrant communities

Shared prosperity

Transportation choices

Reliability and efficiency

Safety and security

Healthy environment

Healthy people

Climate leadership

HOW WE GET THERE

Equitable transportation

Fiscal stewardship

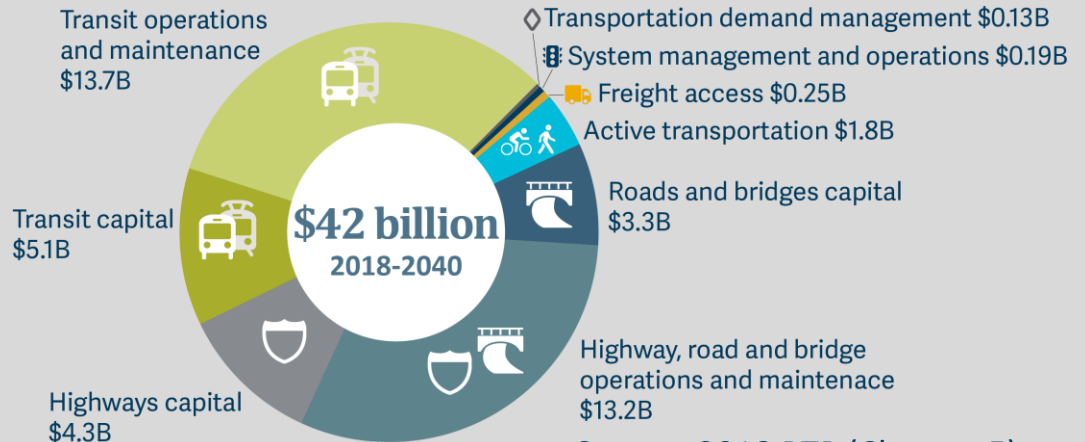
Transparency and accountability

2018 RTP project priorities

Cost by investment category
in rounded billions, 2016 dollars

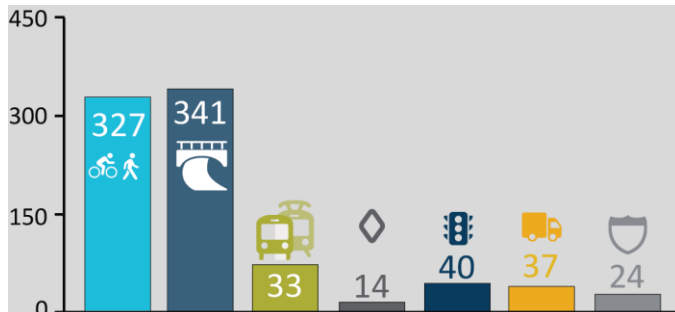
Total capital
\$15.2 billion

Total maintenance and operations
\$36 billion

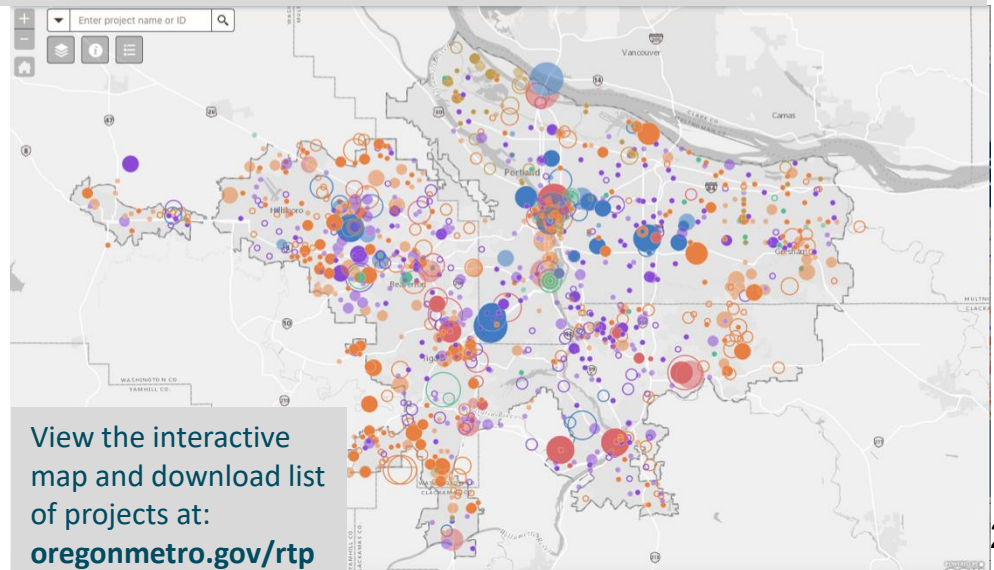


Source: 2018 RTP (Chapter 5)

Capital projects by investment category



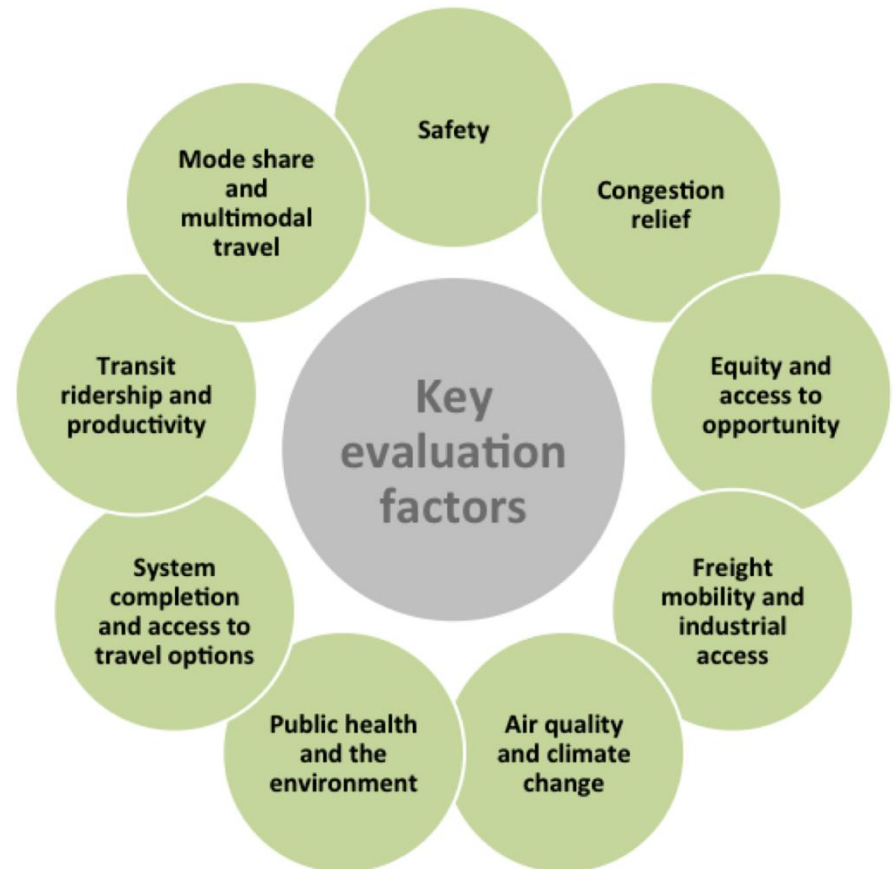
Source: 2018 RTP Constrained Project List



2018 RTP evaluation framework

Investments evaluated for alignment with RTP priority policy outcomes and goals:

- *System-level evaluation (all projects)*
- *Transportation equity analysis (all projects)*
- *Project-level evaluation (piloted and deferred to next plan update)*



Source: 2018 RTP (Chapter 7)

2018 RTP Policy Targets

1



AFFORDABILITY Reduce the combined housing and transportation expenditure for lower-income households by 25%, compared to 2015



2



SAFETY Eliminate transportation fatalities and serious injuries for all users by 2035, with a 50% reduction by 2025 and a 16% reduction by 2020, compared to 2015



3



MULTIMODAL TRAVEL Reduce vehicle miles traveled per person by 10%, compared to 2015



2018 RTP Policy Targets

4



MODE SHARE Triple walking, biking and transit mode shares, compared to 2015



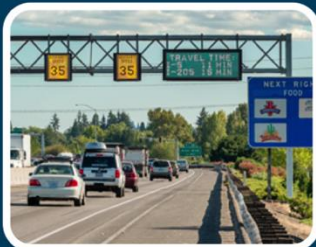
5



SYSTEM COMPLETION Complete 100% of the regional network of sidewalks, bikeways and trails



6



CONGESTION Meet the Interim Regional Mobility Policy for throughways, arterials and the regional freight network



2018 RTP Policy Targets

7



FREIGHT DELAY Reduce vehicle hours of delay per truck trip by 10%, compared to 2040 No Build



8



CLIMATE CHANGE Reduce per capita greenhouse gas emissions from cars and small trucks by 20% by 2035 and 25% by 2040, compared to 2005



9



CLEAN AIR Maintain or reduce air pollution from mobile sources, compared to 2015

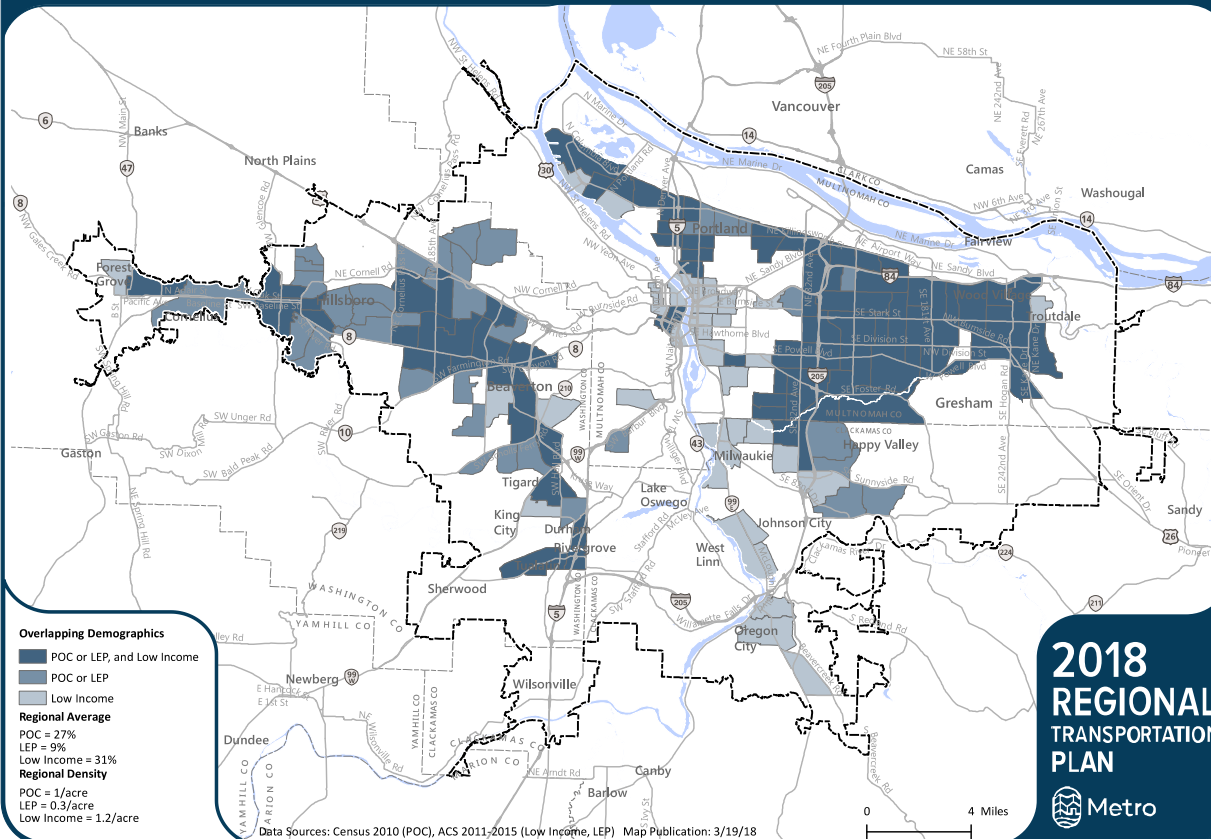


2018 RTP Equity Analysis

Analysis of priorities and disparities experienced by communities that have been excluded from decision making processes and where transportation policies and investments have disproportionately led to harm, displacement and disinvestment

Communities of Color, English Language Learners, and Lower-Income Communities

This map shows census tracts with higher than regional average concentrations and double the density of one or more of the following: people of color, people with low income, and English language learners. Census tracts where multiple demographic groups overlap are identified.



Priorities identified through public engagement and technical work group

- Safety
- Access to jobs, essential destinations and travel options
- Public health
- Affordability

DLCD Climate Friendly Equitable communities (CFEC) rulemaking may result in new or updated requirements for the 2023 RTP to address.

2018 RTP Safety Analysis

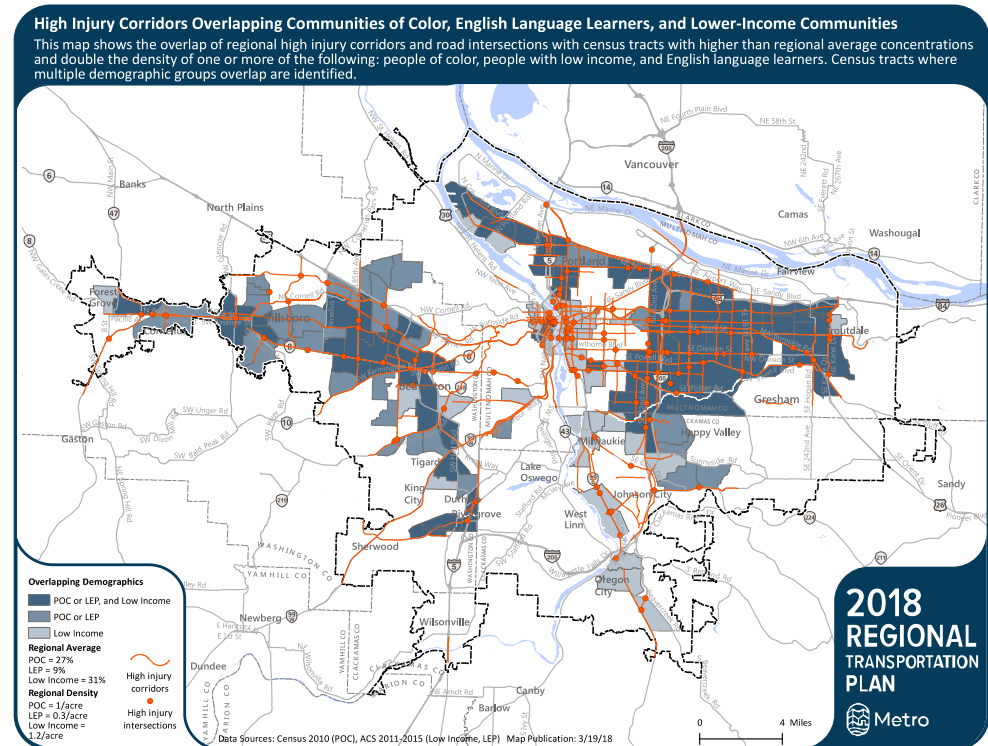
Analysis of high injury corridors and hotspots

More than **60 percent of projects improve safety** and **three-quarters of those projects are located in equity focus areas** – areas with the highest incidents of crashes causing death or life-changing injuries

Average 482 deaths
and serious injuries per year

60% of serious crashes occur on
high injury network which
represents 6% of all streets

While the number of projects improving safety is moving in the right direction, observed crash data from last five years indicates that the region is moving in the wrong direction to achieve Vision Zero target.



Source: 2018 RTP (Chapter 3)

2018 RTP Climate Analysis

Analysis of Climate Smart Strategy implementation

Climate Smart Strategy integrated in 2018 RTP

We are **making satisfactory progress** if we implement the RTP, but more work (and funding) is needed

Track and report progress every 5 years through plan updates to inform planning and programming activities

DLCD Climate Friendly Equitable communities (CFEC) rulemaking may result in new or updated requirements for the 2023 RTP to address.



APPENDIX J

2018 Regional Transportation Plan

Climate Smart Strategy implementation and monitoring

December 6, 2018

oregonmetro.gov/r

2018 RTP Mobility Analysis

Analysis of congestion on the region's major travel routes

Congestion forecasted to grow on throughways and arterials

New multimodal mobility policy and congestion management tools needed for the region

Metro/ODOT regional mobility policy update will recommend an updated policy, measure(s) and target(s) for the 2023 RTP.

DLCD Climate Friendly Equitable communities (CFEC) rulemaking may result in new or updated requirements for the 2023 RTP to address.

Congestion Management Process Toolbox

1		Community design strategies <ul style="list-style-type: none">Walkable communities and job centers facilitated by compact land use in combination with walking, biking and transit connectionsMixed-used areas and transit-oriented developmentParking management and pricing
2		Travel Information and Incentives strategies <ul style="list-style-type: none">Commuter travel options programsHousehold individualized marketing programsCar-sharing and eco-driving techniquesSafe Routes to School programsRidesharing (carpool, vanpool) services
3		System management and operations strategies <ul style="list-style-type: none">Real-time variable message signs and speed limitsSignal timing and ramp meteringTransit signal priority, bus-only lanes, bus pull-outsIncident response detection and clearanceAccess management (e.g., turn restrictions, medians)
Emerging		Congestion pricing strategies <ul style="list-style-type: none">Peak period pricingManaged lanesHigh occupancy toll (HOT) lanes
4		Active Transportation strategies <ul style="list-style-type: none">New biking and walking connections to schools, jobs, downtowns and other community placesBicycle infrastructure (e.g., bicycle racks, lockers and other bicycle amenities at transit stations and other destinations)Separated pathways and trails
5		Transit strategies <ul style="list-style-type: none">High capacity transitExpanded transit coverageExpanded frequency of serviceImprovements in right-of-way to increase speed and reliability of buses and MAXCommunity and job connector shuttlesPark-and-ride lots in combination with transit service
6		Street and throughway capacity strategies <ul style="list-style-type: none">Local and arterial street connectivity to spread out travelAddition of turn lanes at intersections, driveway restrictions and other geometric designs such as roundaboutsRoad widening to add new lane miles of capacity (e.g. adding auxiliary lanes, additional general purpose lanes); pricing is considered when adding new throughway capacity in the region