

ON

34563

284.99'

S89°38'W

209.40'

DIV. LINE MATTHEW WHITE D.L.C.

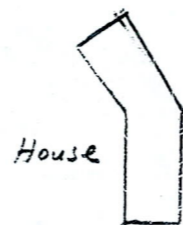
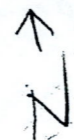
438.90'

N89°54'30"E

3336.75' DEED

900

103.04 AC.



House

Proposed

049

BARN

Well

Milk Shedd

House

395.38'

S22°14'32"W

915.65'

NEW MFH 66x28'

Shedd

EAST 40.19'

BARN

New Addition

1713.43'

Stormwater Reviewed

Case: N/A
Conditions: see Storm Cert.
Multnomah County Land Use Planning Division

EAST 40.19'

EAST

1673.24'

MULTNOMAH COUNTY
ZONING

Use: Barn Addition
MCC/Case: N/A
Date: 9/15/09
By: KC

APPROVAL

1/10" = 10'

1" = 100'

N60°34'W

235'

125'

200'

149.75'

N29°26'E

S60°34'E

100'

H