

## PRE-APPLICATION CONFERENCE NOTICE

THIS IS AN INFORMATIONAL MEETING AND NOT A PUBLIC HEARING

Case File No.: PA 2022-15632

### **MEETING TIME AND PLACE**

**Thursday, April 28, 2022 at 2:00 pm**

The pre-application meeting will be limited to remote virtual participation through Google Meet.

**Participation Options and Instructions:** Contact the staff member noted below by Wednesday, April 27, 2022 at 12:00 p.m. to request a link to attend the meeting.

- 
- WHAT:** A Pre-Application Meeting to discuss the applicable Multnomah County Land Use Code and application requirements for a Community Service permit for a temporary modular classroom at Corbett High School in the Gorge General Rural Center (GGRC) zone.
- LOCATION:** 35800 E Historic Columbia River Highway, Corbett  
Map, Tax Lot #: Township 1 North, Range 4 East, Section 34 Tax Lot 100  
Alt. Acct #R944340760 Property ID #R322666
- APPLICANT:** Carson Shields, Soderstrom Architects
- BASE ZONE:** Gorge General Rural Center (GGRC)  
Gorge General Residential (GGR-5)
- KEY VIEWING AREAS:** Historic Columbia River Highway, Larch Mountain Road, Washington State Route 14, and Sandy River
- LANDSCAPE SETTING:** Village and Rural Residential
- CONTACT:** The applicable Multnomah County Code (MCC) provisions and Comprehensive Plan Policies will be discussed at the Pre-Application Meeting. For further information regarding the meeting, contact Planner, Rithy Khut at Multnomah County's Land Use Planning Division at (503)-988-0176 or [rithy.khut@multco.us](mailto:rithy.khut@multco.us). The notes from this meeting can be obtained by attending the meeting or by contacting the Planner after the meeting date.
-





- (D) Planning staff will be responsible for reviewing the applicable procedures and approval criteria and to identify all known issues.
- (E) Members of the public and other agency representatives will be provided the opportunity to ask questions about the proposal and will be asked to identify any relevant issues.

### **III. Other Opportunities for Review:**

- (A) If you are interested in the proposal and are unable to attend the Pre-Application meeting, you may review the Pre-Application case file at the offices of Multnomah County Land Use Planning, located at 1600 SE 190<sup>th</sup> Avenue, Portland, between 8:00 a.m. and 4:00 p.m., Tuesday through Friday, except holidays.
- (B) After the Pre-Application meeting, and after the application has been deemed “complete” by responding to each approval criteria, you will receive a notice announcing the date, time, and place of the Public Hearing. Failure to participate at the Pre-Application meeting will not preclude your involvement at the first scheduled hearing on the completed application.

*Notwithstanding any representations by County staff at a pre-application conference, staff is not authorized to waive any requirements of the County Code. Any omission or failure by staff to recite to an applicant all relevant applicable land use requirements shall not constitute a waiver by the county of any standard or requirement. [MCC 38.0570(C)]*

#### **Enclosures:**

Zoning Map  
Site Plan  
Building/Floor Plan



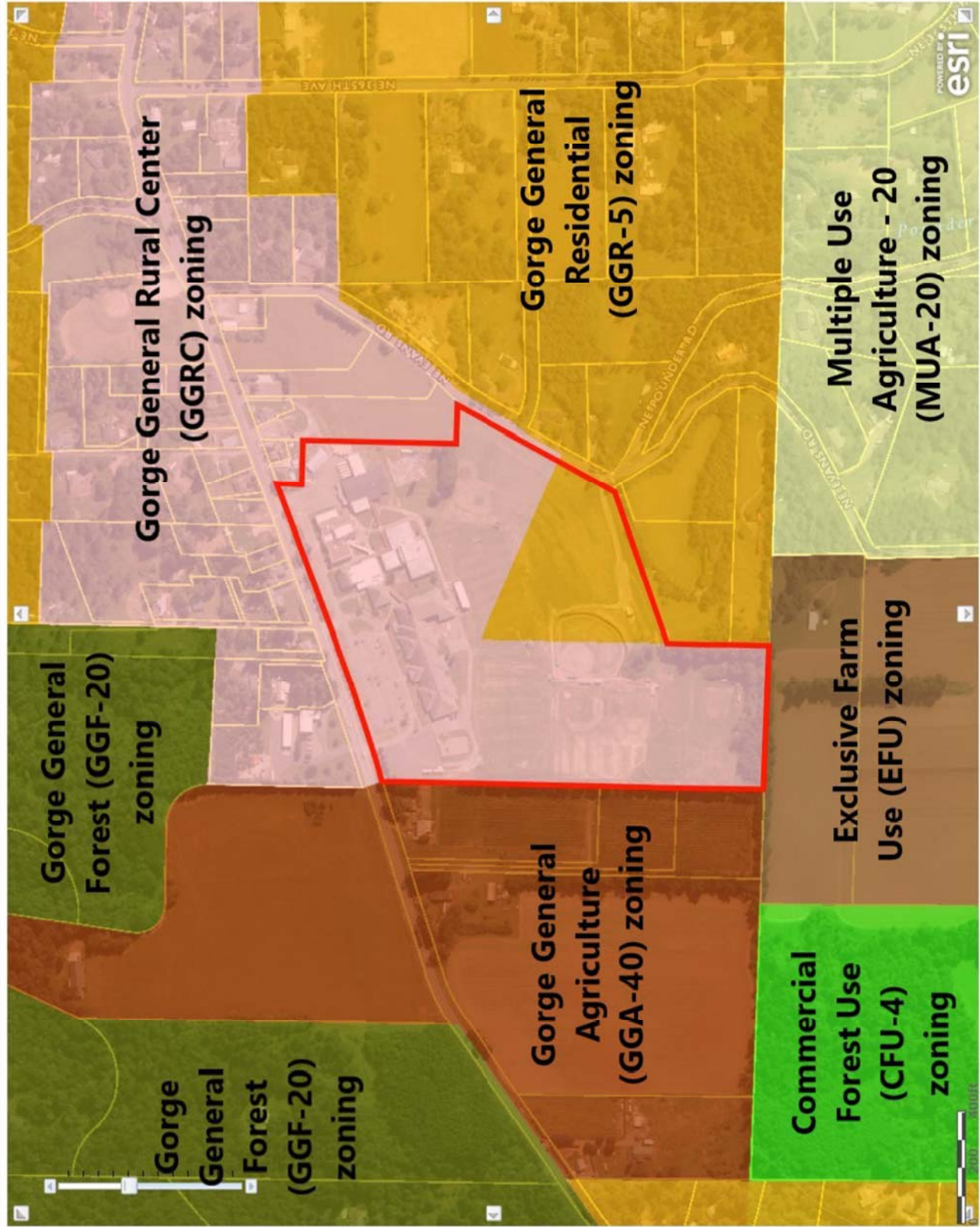
Department of Community Services  
Land Use Planning and Transportation  
Program  
1600 SE 190th Ave.  
Portland, OR 97233  
Ph 503.988.3043  
Fax 503.988.3389  
Email: [land.use.planning@multico.us](mailto:land.use.planning@multico.us)

This map is based on data from non county sources.  
This map is not printed to scale and should not be used for measurement.  
Multnomah County cannot accept responsibility for errors, omissions or positional accuracy.  
There are no warranties expressed or implied.

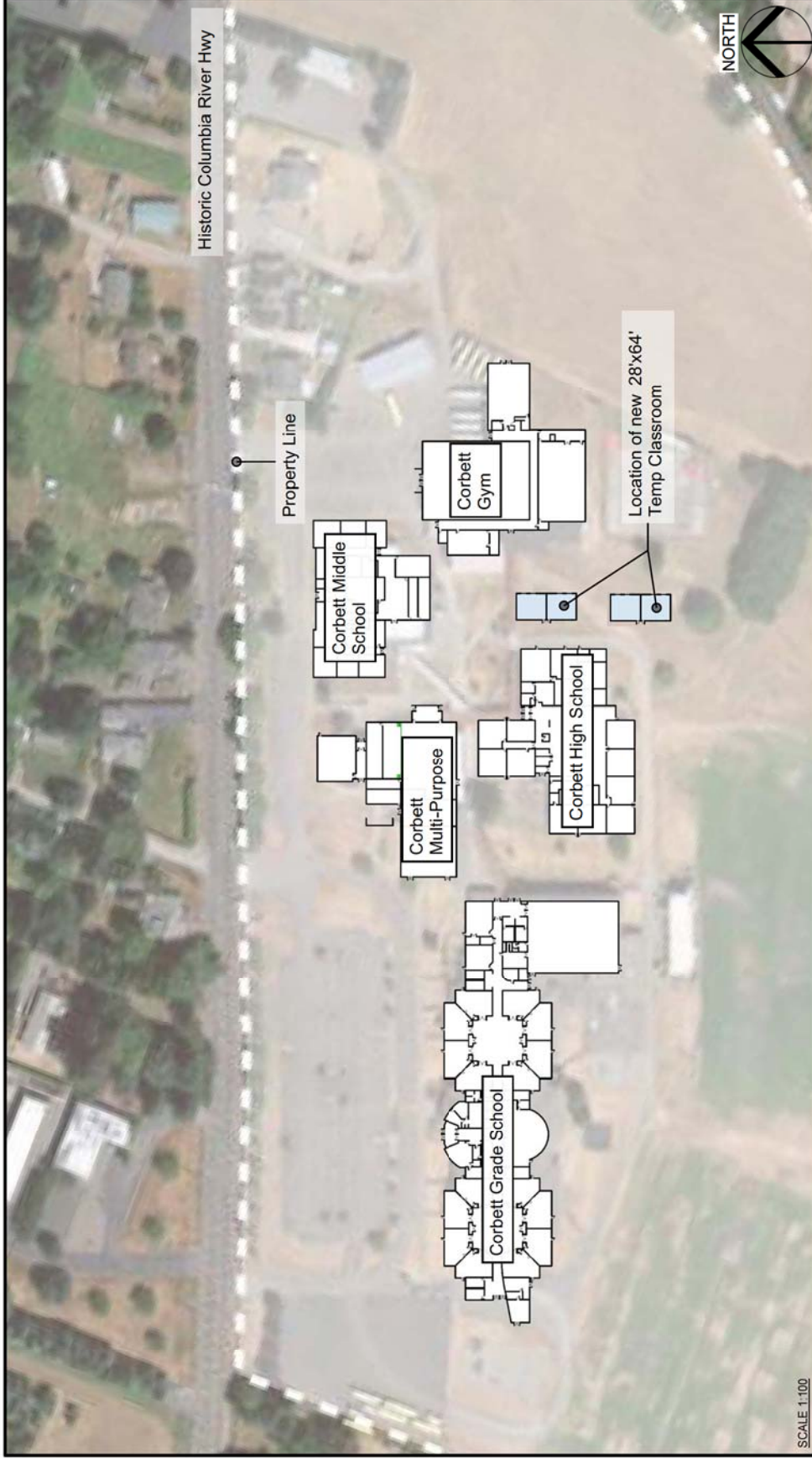
**Map Comments:**

Map showing the zoning of 35800 E Historic Columbia River Highway, Corbett (#8944340760 / #R322666) and surrounding properties

[Web Layout](#)







Modular Building

**Corbett High School**  
Corbett School District

02/08/22  
**Soderstrom** Architects

