

TAX FORECLOSED PROPERTY SALE

PUBLIC SALE August 12, 2022

9:00 am Registration | 10:00 am Bidding

501 SE HAWTHORNE, PORTLAND, OR

**Room 100 | Eight properties: SFR,
Duplex, Residential Land, Condo Pkg.**



**Sold AS IS to
highest and best
bid. ALL Sale
information,
including Sale
Rules, is online:
multco.us/tax-title**

DISCLAIMER

All properties are sold **AS IS**. Potential buyers should thoroughly investigate all aspects of a property prior to bidding. Multnomah County does not guarantee or warrant that any parcel is usable for any particular purpose. Properties may have mold, lead paint and other conditions which render the improvements **NOT** currently habitable and without economic potential.

Please be advised that County employees are not authorized to answer specific questions regarding the properties, including but not limited to: the size, the condition, the planning, zoning or building codes or regulations applicable thereto. Any statement by a County employee on these matters is not binding on the County; except and unless such a statement is made by a County Land Use Planning Division staff member in the context of a formal land use decision wherein the County is the land use planning jurisdiction with respect to the subject property

The information contained herein has been obtained through sources deemed reliable by Multnomah County but cannot be guaranteed for its accuracy. It is highly recommended buyer and interested parties independently verify any information. More information, including Public Sale List, updated regularly and available first on website: multco.us/tax-title



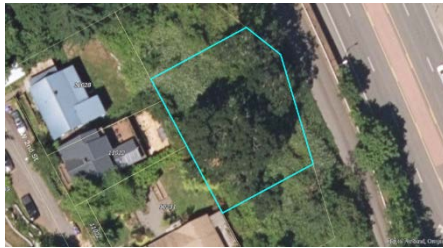
MULTNOMAH COUNTY TAX TITLE PUBLIC SALE AUGUST 12, 2022

PROPERTY #1
NW PDX SFR
6051 NW 60TH AVE
PORTLAND, OR 97210
Tax Account: R308276
0.11 acres (5,000 sq ft)
BLDG ~984 sq ft
Zoning: R5
Minimum Price: \$75,000
Earnest Money: \$25,000

PROPERTY #2
NW PDX LAND
~11000 NW 1ST ST
PORTLAND, OR 97231
Tax Account: R288350
0.23 acres (10,200 sq ft)
Zoning: R5cz
Minimum Price: \$2,000
Earnest Money: \$2,000

PROPERTY #3
NW PDX LAND
~10900 NW 1ST
PORTLAND, OR 97231
Tax Account: R288376
0.20 acres (8,850 sq ft)
Zoning: R5cz/R5c
Minimum Price: \$2,000
Earnest Money: \$2,000

PROPERTY #4
GRESHAM CONDO PKG
2817 NE RENE AVE
GRESHAM, OR 97030
Tax Account: R608004
1/2 PARKING GARAGE
UNIT 23-B
CONDO OWNERS ONLY
Minimum Price: \$2,000
Earnest Money: \$2,000

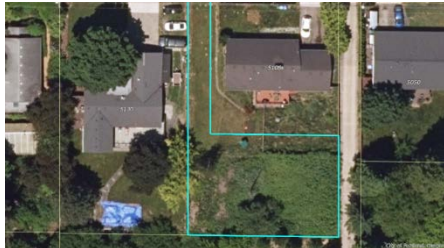


COVID 19 Precautions may be required for attendance: face masks, social distancing, no-touch registration. Medical accommodations will be confirmed. Please see Sale Rules at website: multco.us/tax-title

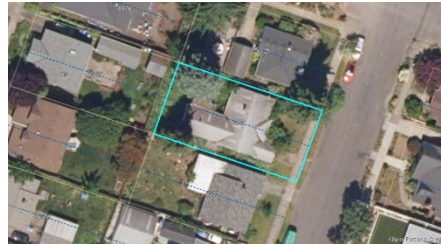


MULTNOMAH COUNTY TAX TITLE PUBLIC SALE AUGUST 12, 2022

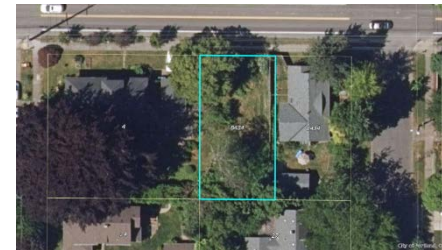
PROPERTY #5
SW PDX LAND
 ~5120 SW VERMONT ST
 PORTLAND, OR 97219
 Tax Account: R627250
 0.19 acres (8,387 sq ft)
 Zoning: R7z
 Minimum Price: \$75,000
 Earnest Money: \$25,000



PROPERTY #6
N PDX DUPLEX
 8563 N TIOGA AVE,
 PORTLAND OR 97203
 Tax Account: R245566
 0.11 acres (5,000 sq ft)
 BLDG ~1,372 sq ft
 Zoning: R2.5
 Minimum Price: \$150,000
 Earnest Money: \$50,000



PROPERTY #7
SE PDX LAND
 ~8450 E BURNSIDE ST
 PORTLAND, OR 97216
 Tax Account: R284700
 0.11 acres (5,000 sq ft)
 Zoning: R5
 Minimum Price: \$75,000
 Earnest Money: \$25,000



PROPERTY #8
SE PDX SFR
 12044 SE KELLY ST
 PORTLAND, OR 97266
 Tax Account: R333881
 0.21 acres (9,100 sq ft)
 BLDG: ~850 sq ft
 Zoning: R5
 Minimum Price: \$150,000
 Earnest Money: \$50,000



COVID 19 Precautions may be required for attendance: face masks, social distancing, no-touch registration. Medical accommodations will be confirmed. Please see Sale Rules at website: multco.us/tax-title



MULTNOMAH COUNTY TAX TITLE PUBLIC SALE AUGUST 12, 2022

OPEN:
WED 7.27.2022
10:30 AM -11:30 AM

TUES 8.2.2022
2:45 PM- 3:45 PM

6051 NW 60TH AVE
PORTLAND, OR 97210
Tax Account: R308276



OPEN:
WED 7.27.2022
9 AM -10 AM

TUES 8.2.2022
1 PM- 2 PM

8563 N TIOGA AVE,
PORTLAND OR 97203
Tax Account: R245566



OPEN:
WED 7.27.2022
2:30 PM -3:30 PM

TUES 8.2.2022
10:30 AM - 11:30 AM

~8450 E BURNSIDE ST
PORTLAND, OR 97216
Tax Account: R284700



OPEN:
WED 7.27.2022
1 PM -2 PM

TUES 8.2.2022
9 AM- 10 AM

12044 SE KELLY ST
PORTLAND, OR 97266
Tax Account: R333881



OPEN HOUSES AT ABOVE PROPERTIES WEDNESDAY JULY 27 AND TUESDAY AUGUST 2, 2022, AT TIMES INDICATED ABOVE. YOU MUST INSPECT AT YOUR OWN RISK, BRING YOUR OWN FLASHLIGHT, AND ANY PERSONAL PROTECTIVE EQUIPMENT YOU ELECT.



MULTNOMAH COUNTY TAX TITLE PUBLIC SALE AUGUST 12, 2022