

The SUN Service System in Multnomah County FY22

Our shared vision: A community that effectively engages and supports all children and families so they are healthy, educated and prosperous.

SUN drives educational success of our youth and the stability and prosperity of their families. Like intertwined strands of a rope, SUN is strengthened by the dozens of nonprofit and public partners that make up our collaborative partnership. Our commitment to equity underlies our prioritization of programs that will have the greatest outcome for those experiencing barriers, as well as our investment in culturally specific and culturally responsive services. The strategies and services below represent the current array of supports offered through SUN.

CORNERSTONE STRATEGY



SUN COMMUNITY SCHOOLS

92 SITES in six school districts

Mobilizing and organizing community resources and partners to provide wide-ranging supports for kids and families.

Building a community hub to ensure academic success for students and economic prosperity for families.

FOCUS AREAS



YOUTH & FAMILY ADVOCACY

- SUN Youth Advocacy
- Sexual & Gender Minority Youth Services
- Successful Families



FAMILY STABILITY SUPPORTS

- Multnomah Stability Initiative
- School-Based Food Pantries
- Energy Assistance
- Family Resource Navigator
- Client Assistance



EARLY LEARNING SUPPORTS

- Parent-Child Development
- Early Kindergarten Transition
- Kindergarten Teacher Home Visits
- Prenatal to 3rd Grade
- Play and learn groups
- Parent Engagement in School

BY THE NUMBERS



41,140

The total number of people who participated in SUN programs.



381

The number of children who were engaged in parent-child development services with parents.



3,500

The number of people who were connected to Family Resource Navigators.



322

The number of households served in MSI program.



411

The number of children & parents/primary caregiver served in Successful Families Program.



73%

Percent of people served who are people of color or from culturally specific communities.*



21,513

The number of households that received energy assistance.



1,857

The average number of households that engaged in school food pantries weekly.



757

The number of youth assisted through SUN Youth Advocacy.



SUN SERVICE SYSTEM PARTNERSHIP

City of Portland

- Parks and Recreation
- Portland Children's Levy

Schools/MESD

- Centennial SD
- David Douglas SD
- Gresham Barlow SD
- Parkrose SD
- Portland Public Schools
- Reynolds SD

Other Partners

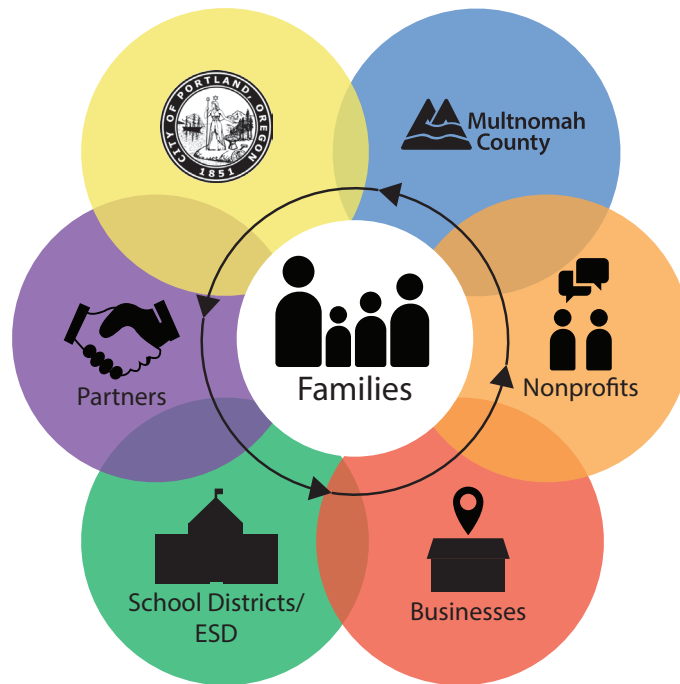
- All Hands Raised
- Coalition of Communities of Color
- Early Learning Multnomah
- Oregon Dept. of Human Services
- United Way

Multnomah County

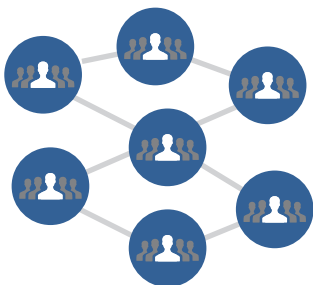
- County Human Services
- Health Department
- Library

Nonprofit Partners

- El Programa Hispano Católico
- Our Just Future
- Immigrant and Refugee Community Organization (IRCO)
- Impact Northwest
- Latino Network
- Metropolitan Family Service
- Mount Hood Community College
- Native American Youth and Family Center (NAYA)
- New Avenues for Youth
- Self Enhancement Inc



SUN SYSTEM STRUCTURES



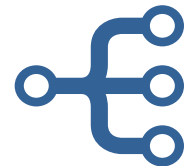
Sponsor Group:

Executives of organizations that directly fund or support core programs. Provide policy, system and funding decision making.



Coordinating Council:

Representatives of the Sponsors, partner organizations and communities. Provide guidance, support and accountability for the SUN System



System Backbone:

Multnomah County plays the role of backbone organization that actualizes the recommendations of the coordinating council and sponsors and manages the partnership and collaborative services.