

## **A-5. Community at Risk: Scappoose Fire District**

The Scappoose Fire District has been identified as a Community -At-Risk by Oregon Department of Forestry. The District includes portions of Columbia County and Multnomah County, and has participated in both Counties' CWPP planning processes to evaluate capabilities to prevent, prepare for and respond to potential wildfire events. In doing so, Scappoose Fire has developed a list of actions to build capacity at the District scale. Scappoose Fire District also recognizes that there are smaller-scale Communities-At-Risk that have unique wildfire hazards to be addressed at the more local scale. As such, specific action plans have been developed to address the potential wildfire hazards in these areas as well.

### **Scappoose Fire District Description**

The fire district consists of a 52 mi<sup>2</sup> fire protection area, and 100 square mile ambulance service area. The City of Scappoose and the unincorporated areas of Warren, Chapman and Holbrook as well as 12 miles along the Multnomah Channel, which has a large residential river front community, make up the service area served by the district. The Fire District services approximately 12,000 residents. The area is served by three stations staffed by 35 volunteers, 5 office/management staff and 9 career fire/medical personnel. The Fire District is a full service emergency provider (fire suppression, rescue, transport ambulance).

### **Scappoose Fire District Wildfire Hazards**

The Multnomah County CWPP wildfire hazard assessment assisted Scappoose Fire in identifying areas that may be at higher risk to potential wildfires. Map #18 illustrates the overall wildfire hazard risk in the Multnomah County portion of the Scappoose Fire District and will be used to help target areas for wildfire prevention activities.

### **Local Communities at Risk**

The Scappoose Fire District also recognizes that there are smaller-scale Communities at Risk that have unique wildfire hazards to be addressed at the more local scale. Communities that have been identified as being particularly vulnerable to wildfires are illustrated in Map#18 and listed in Table A-5.1. Scappoose Fire District staff considered the following factors to determine the local CARs including:

- Need for defensible space
- Access limitations (narrow driveways, lack of address signage, one way in/one way out)
- Steep slopes that can hinder access and accelerate the spread of wildfire
- Lack of water available for wildland fire fighting
- Heavy fuels on adjacent public lands
- Potential ignition sources from recreationists and transients
- Agricultural and backyard burning
- Lack of community outreach programs to promote wildfire awareness
- Communications difficulties

### **Scappoose Fire District Action Plan**

The Scappoose Fire District has developed a list of actions to build capacity at the District scale and has identified actions that can help to make the local CARs more resilient to potential wildfires. The action plan for the Scappoose Fire District and the local CARs therein is provided in Table A-5.2.

## Scappoose Fire District CWPP Community Involvement

Multnomah County initiated community involvement and public outreach events for the highest priority Communities at Risk in each Fire Department/District in Multnomah County. The community meeting in Scappoose was held for the Holbrook community and had three primary objectives: to gather information from the public about their wildfire concerns, to share information about the fire plan and living with wildfire and recruit volunteers to staff the newly remodeled fire station.

### ***Holbrook Community CWPP Meeting***

**Date:** May 12<sup>th</sup>, 2011 from 6:30pm-8:30pm

**Location:** Holbrook Fire Station

**Attendance:** 26 residents

**Facilitators:**

- **Scappoose Fire:** Chief Mike Greisen, Asst. Chief John Shull
- **ODF:** Malcolm Hiatt, Cindy Kolomechuk

### ***Meeting Description***

Holbrook is a community of about 50 residences. The community lies at the eastern edge of the Scappoose RFPD with extended response times from the main station. Access is severely limited, with One Way in-out NW Morgan Road from NW Clark traveling West and all roads off of it, as in, NW Rainier, NW Cleetwood NW Chestnut. A recently refurbished fire station is located here, but is not staffed. The Spring, 2011, Holbrook Community CWPP Meeting is a great opportunity to recruit volunteers to staff the newly remodeled fire station.

The area has heavy fuels loading and intensive forest management activities occur around and within this community. The Holbrook Community CWPP Meeting was held in the evening and firefighters prepared a Barbeque meal for all attendees. Malcolm Hiatt (ODF) set up a “wheel of wisdom” along with a three dimensional diagram that illustrated good and bad examples of defensible space and fire safe homes which served as the focal points for starting discussions with visitors about wildfire issues. Visitors to the community meetings also had an opportunity to talk with fire district and ODF about their perceptions of wildfire risk, their priorities for prevention and response, and resources they have to potentially assist fire fighters.

Chief Mike Greisen opened the meeting, provided introductions and discussed wildfire hazards in the Holbrook neighborhood. Chief Greisen also discussed the delayed response time to this area and the need for volunteers to staff the Holbrook station in order to protect this community. Cindy Kolomechuk



Malcolm Hiatt (ODF) uses the “Wheel of Wisdom” to teach wildfire prevention

provided an overview of the Multnomah County Fire Planning process. Malcolm Hiatt then gave a more in depth description regarding the types of fire-resistive building materials to use, how to effectively create defensible space, and how to provide adequate access.

Assistant Chief John Shull closed the meeting with an excellent presentation on the train derailment one week prior. On May 4<sup>th</sup>, 2011 a train car derailment along the railroad adjacent to Hwy 30 made for a more exciting evening than anticipated. A train carrying logs derailed into a line of parked railroad tank cars carrying denatured alcohol on tracks west of Cornelius Pass on Highway 30. A massive fire occurred, and pushed fire crews back a half of a mile. The area was evacuated and Hwy 30 was closed while fire fighters from multiple agencies worked to extinguish the blaze.

### ***Information Gleaned from Community***

Community members were asked to provide input regarding their perceptions of wildfire risk and rank the highest priority issues in their neighborhood (Table A-5.3 Wildfire Concerns in the Trout Creek/Aims CAR). Scappoose Fire developed a series of action items (Table A-5.2 Scappoose Fire Action Plan) to address these and other potential wildfire hazards in the Communities at Risk in their service area.

The residents recognized that access and evacuation issues coupled with potentially longer response times make community preparedness critical for this area. Residents are concerned that the steep, narrow driveways that characterize their neighborhood. Chief Greisen mentioned how difficult evacuation can be on these roads if people are trying to leave while emergency vehicle are trying to respond. Attendees were encouraged to take an active role in making their community more disaster resilient by volunteering to staff the Holbrook Fire Station and to take adequate measures to protect their homes through defensible space.

**Table A-5.3 Wildfire Concerns in the Holbrook Community**

<b>Topic</b>	<b>Holbrook Community</b>
1. Access Limitations	High
2. Protection Capabilities	High
3. Evacuation, Emergency Preparedness	High
4. Backyard/ Agricultural Burning	Medium
5. Concerns about Adjacent Public Lands	Medium
6. Water Availability	Medium
7. Transients/ Recreation	Low
8. Concerns about Neighboring Private Property	Low



# SCAPPOOSE FIRE DISTRICT OVERALL WILDFIRE RISK

COMMUNITY WILDFIRE PROTECTION PLAN - 2011 MAP #15

## Overall Wildfire Risk Map - Inputs and Data Sources

- Risk, Values, Protection Capabilities, and Hazard Layers
- Wildland Urban Interface (Structural Vulnerability)

Sources: Metro RLIS Data, Oregon Dept. Forestry, U.S. Forest Service, Multnomah Co. GIS, Oregon State Fire Marshall

## Overall Rating

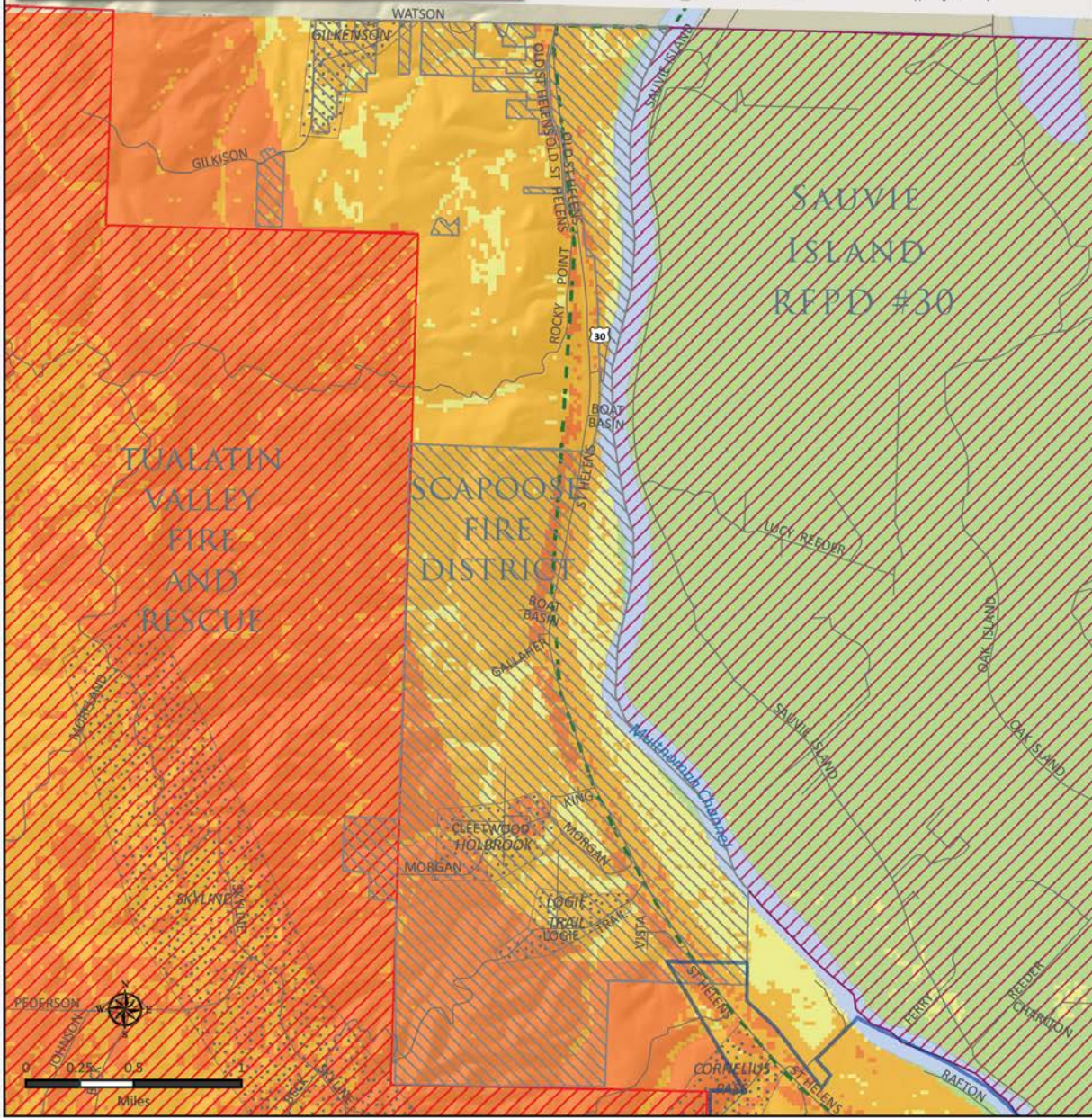
- LOW
- MEDIUM
- HIGH
- EXTREME

## Communities at Risk

- Portland Fire and Rescue
- Sauvie Island RFPD #30
- Tualatin Valley Fire and Rescue
- Scappoose Fire District



This map is provided for informational purposes only. Information used to develop this map has been obtained from many sources, and is not guaranteed to be accurate. Multnomah County assumes no responsibility for the accuracy of information appearing on this map.



**Table A-5.1 Scappoose Communities at Risk**

Community At Risk	CAR Priority	Defensible Space	Access	Water	Public Lands	Private Lands	Recreators/ Transients	Protection Capabilities	Burning	Preparedness	Communications	Steep Slopes	Description
<b>Scappoose Fire Communities at Risk</b>													
<b>Holbrook</b>	<b>High</b>	<b>X</b>	<b>X</b>	<b>X</b>	<b>X</b>	<b>X</b>	<b>X</b>	<b>X</b>		<b>X</b>		<b>X</b>	Holbrook is a community of about 50 residences. The community lies at the eastern edge of the Scappoose RFPD with extended response times from the main station. Access is severely limited, with One Way in-out NW Morgan Road from NW Clark traveling West and all roads off of it, as in, NW Rainier, NW Cleetwood NW Chestnut. A recently refurbished fire station is located here, but is not staffed. A community meeting is planned for Spring, 2011, and this is a great opportunity to recruit volunteers to staff the newly remodeled fire station. The area has heavy fuels loading and intensive forest management activities occur around and within this community.
<b>Logie Trail Road</b>	<b>High</b>	<b>X</b>	<b>X</b>	<b>X</b>	<b>X</b>	<b>X</b>	<b>X</b>	<b>X</b>		<b>X</b>		<b>X</b>	This area is a high priority area for prevention efforts because it is difficult to access, there are heavy fuels and steep slopes, and the homes are in a canyon that presents communications issues. In addition, it is a high use recreation area that increases potential wildfire ignition sources. In 2001, Gresham Fire completed a Structural Protection Plan that articulates water supply needs, response tactics and resources needed for each of the following neighborhoods: Homan Road, Oxbow Parkway, Hosner Terrace, Francis Street, Camp Collins and Oxbow Park. Structural triage was also completed for this area in 2001. The community has neighborhood associations that meet regularly and are well-organized.
<b>Gilkenson Road</b>	<b>Medium</b>	<b>X</b>	<b>X</b>	<b>X</b>	<b>X</b>	<b>X</b>	<b>X</b>	<b>X</b>		<b>X</b>		<b>X</b>	Gilkenson Road is a community of about 28 residences. Access is limited, and there are isolated homes in the area. The community has heavy fuels loading on very steep slopes. Intensive forest management activities occur around and within this community.

**Table A-5.2 Scappoose Fire and Scappoose Communities At Risk Action Plans**

Action Item	Timeframe	Partners	CAR
<b>Scappoose Fire Overall Action Plan</b>			
Inventory bridges, determine whether or not they have had an engineer certification and develop a system to track required 5-year engineer inspections.	Long-Term	ODOT, Multnomah County, MCEM	Scappoose Fire
Acquire funding to purchase six portable and six mobile 700/800 mhz radios that are needed for wildland vehicles and fire engines to effectively communicate with mutual aid companies from Washington and Multnomah counties.	Short Term	MCEM, UASI	Scappoose Fire
Continue working with ODF to train all volunteer and paid staff to at least Firefighter Level 1.	Ongoing	ODF	Scappoose Fire
Work with Multnomah County Land Use Planning to address RR5 zoning issues where primary and secondary fuels reduction and fire resistive construction requirements are not required.	Short Term	Multnomah County Land Use Planning	Scappoose Fire
Work with Multnomah County Land Use Planning to develop and allow alternative building construction and materials for areas unable to meet defensible space requirements.	Short Term	Multnomah County Land Use Planning	Scappoose Fire
Encourage Multnomah County Planning to meet individually with Scappoose Fire to establish relationships, articulate expectations and promote fire resistant development.	Short Term	Multnomah County Land Use Planning	Scappoose Fire
Work with Multnomah County to produce a check list for inspection that must be completed by Scappoose Fire District before an occupancy permit is issued.	Short Term	Multnomah County Building Dept.	Scappoose Fire
Consider entering into the Multnomah County Fire Defense Board Mutual Aid Agreement.	Short Term	Multnomah County Fire Defense Board	Scappoose Fire
<b>Scappoose Local Communities at Risk Action Plan</b>			
Conduct a Community Meeting to educate community on defensible space, and measures that can be taken to reduce structural ignitability. Solicit feedback on wildfire prevention projects the community would support.	Spring 2011/ Ongoing	ODF, CWPP Outreach Subcommittee	Holbrook Logie Trail
Develop a local wildfire prevention campaign to promote defensible space and reduce structural ignitability within the Home Ignition Zone.	Spring 2011/Ongoing	ODF, CWPP Outreach Subcommittee	All
Initiate structural triage assessment data collection for structural ignitability and defensible space.	Short Term	ODF, Wildfire Technical Committee	All
Develop a community-driven pre-disaster plan including evacuation routes, telephone call down trees, and other strategies for strengthening community response.	Short Term	MCEM	All
Map all roads, bridges and driveways and prioritize homes that have dead-ends, and cannot support emergency service vehicles (grade, length, vegetation, turn-arounds) for defensible space and fuels reduction projects.	Long Term	Multnomah County	All
Implement road addressing and signage for emergency response.	Short Term	ODF	All
Inventory existing water resources and identify alternative water sources to support potential wildfire fighting efforts.	Short Term	ODF	All
Seek grant funding to support fuels reduction and creation of defensible space around homes. Consider developing a cost-share program to support these activities.	Ongoing	ODF, Wildfire Technical Committee	All
Seek grant funding to support fuels reduction and creation of defensible space around homes. Consider developing a cost-share program to support these activities.	Ongoing	ODF, Wildfire Technical Committee	All
Identify opportunities for community debris disposal collection sites that recycle or compost vegetative material vs. burning.	Ongoing	ODF, Wildfire Technical Committee	All