

# Postcards from a Climate Resilient Future

Prototype 1

June 29, 2023

# Postcards: Front and Back

- + Following are the postcard creations by the artists working on Prototype I
- + Please feel free to download the images and make them into postcards
- + And share them with neighbours, friends, family.
- + The QR code on the back will allow you to register for the project which continues through end of 2024.
- + We would be delighted for you to join us for future iterations. Please do fill out the form on the CETI website to join.

# Artist: Heather Dunaway Smith

## *Overlap*

Augmented Walking Tour

Parkrose/Cully



# PostCards from our climate resilient future

PLACE  
STAMP  
HERE

an augmented placemaking project that visualizes community designed actions that address our county's climate future.

TO:

FROM:

---

---

---

---

---

---

---

THE Overlap



Scan to view in AR.

The overlap of you & me  
One & the same with space between  
Future, past, & present tense all sing  
In harmony

It is BE-ing  
Hear it ringing

For more information about the project & to participate,  
go to: <https://bit.ly/climate-form1>





# PostCards from our climate resilient future

PLACE  
STAMP  
HERE

an augmented placemaking project that visualizes community designed actions that address our county's climate future.

TO:

FROM:

---

---

---

---

---

---

---

THE Overlap



Scan to view in AR.

The overlap of you & me  
One & the same with space between  
Future, past, & present tense all sing  
In harmony

It is BE-ing  
Hear it ringing

For more information about the project & to participate,  
go to: <https://bit.ly/climate-form1>

# Artist: Mareika Glenn

## *Grow Resilient*

Postcards/Posters + Seeds

Hellstrips around the County



# PLANT AN URBAN MEADOW

Willamette Valley Pollinator Mix

Sow seeds between September and November or in March.

Seeds grow best on clear loose soil, but can be sown anywhere they can take root.

Seeds can be raked into soil. Be careful not to cover seeds with more than  $\frac{1}{4}$  in of soil.



scan here to learn more about  
Postcards from Our Climate Resilient Future  
<https://bit.ly/climate-form1>





# Artist: Daniela Molnar

***You and I are Nature, and our City is Nature, too.***

Postcards—Cyanotypes + Paintings with Natural Pigment

*Made with sun, plants, pigments, and water*

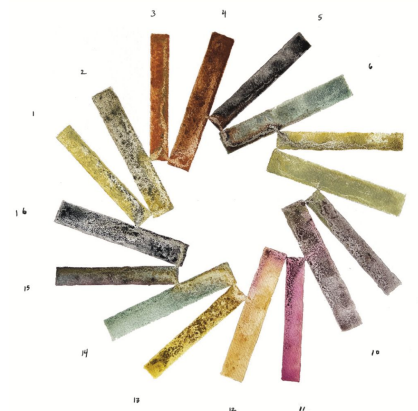
from alleyways and other public lands in the Johnson Creek watershed, Portland,



Made with pigments and waters from the Johnson Creek watershed, Portland, Oregon

By Daniela Naomi Molnar, May-June 2023

For more information about this project and to participate, go to: <https://bit.ly/climate-form1>



- 1 Alleyway dandelion + Johnson Creek water
- 2 Alleyway bearded iris + rainwater
- 3 Labyrinth terracotta + rainwater
- 4 Creekside ochre + Johnson Creek water
- 5 Carbonized alleyway willow + rainwater
- 6 Alleyway grape hyacinth + rainwater
- 7 Reedway-Ramona alley hawthorn blooms + rainwater
- 8 Johnson Creek shale + Johnson Creek water
- 9 Red Alder cone ink + rainwater
- 10 Alleyway iron + avocado pit + rainwater
- 11 Fallen camellia + rainwater
- 12 Park ochre + Johnson Creek water
- 13 Alleyway dandelion 2 + rainwater
- 14 Alleyway grape hyacinth 2 + rainwater
- 15 Willamette shale + Johnson Creek water
- 16 Carbonized alley bones + rainwater



Made with pigments and waters from the Johnson Creek watershed, Portland, Oregon

By Daniela Naomi Molnar, May-June 2023

For more information about this project and to participate, go to: <https://bit.ly/climate-form1>





Made with pigments and waters from the Johnson Creek watershed, Portland, Oregon

By Daniela Naomi Molnar, May-June 2023

For more information about this project and to participate, go to: <https://bit.ly/climate-form1>



- 1 Alleyway bearded iris + rainwater
- 2 Alleyway dandelion + Johnson Creek water
- 3 Alleyway grape hyacinth + rainwater
- 4 Alleyway iron + avocado pit + rainwater
- 5 Reedway-Ramona alley hawthorn blooms + rainwater
- 6 Carbonized alleyway willow + rainwater
- 7 Creekside ochre + Johnson Creek water
- 8 Labyrinth terracotta + rainwater
- 9 Alleyway ochre + Johnson Creek water
- 10 Alleyway grape hyacinth 2 + rainwater
- 11 Alleyway bearded iris 2 + rainwater
- 12 Fallen camellia + rainwater
- 13 Red Alder cone ink + rainwater
- 14 Willamette shale + Johnson Creek water
- 15 Johnson Creek shale + Johnson Creek water
- 16 Alleyway dandelion 2 + rainwater





Made with pigments and waters from the Johnson Creek watershed, Portland, Oregon

By Daniela Naomi Molnar, May-June 2023

For more information about this project and to participate, go to: <https://bit.ly/climate-form1>



- 1 Alleyway dandelion + Johnson Creek water
- 2 Alleyway grape hyacinth + rainwater
- 3 Carbonized alleyway willow + rainwater
- 4 Alleyway iron + avocado pit + rainwater
- 5 Fallen camellia + rainwater
- 6 Red Alder cone ink + rainwater
- 7 Alleyway grape hyacinth 2 + rainwater
- 8 Alleyway dandelion 2 + rainwater
- 9 Creekside ochre + Johnson Creek water
- 10 Labyrinth terracotta + rainwater
- 11 Alleyway bearded iris + rainwater
- 12 Alleyway grape hyacinth + rainwater
- 13 Reedway-Ramona alley hawthorn blooms + rainwater
- 14 Carbonized alley bones + rainwater
- 15 Willamette shale + Johnson Creek water
- 16 Alleyway dandelion + Johnson Creek water
- 17 Carbonized alleyway willow + rainwater
- 18 Alleyway iron + avocado pit + rainwater
- 19 Fallen camellia + rainwater
- 20 Red Alder cone ink + rainwater
- 21 Alleyway grape hyacinth 2 + rainwater
- 22 Alleyway dandelion 2 + rainwater
- 23 Creekside ochre + Johnson Creek water
- 24 Labyrinth terracotta + rainwater
- 25 Alleyway bearded iris + rainwater
- 26 Alleyway grape hyacinth + rainwater
- 27 Reedway-Ramona alley hawthorn blooms + rainwater
- 28 Carbonized alley bones + rainwater
- 29 Alleyway iron + avocado pit + rainwater

"AN EMERGENCY IS A SEPARATION FROM THE FAMILIAR. A SUDDEN  
EMERGENCE INTO A NEW ATMOSPHERE, ONE THAT OFTEN DEMANDS  
WE OURSELVES RISE TO THE OCCASION." — REBECCA SOLNIT



"LOOK, WE ARE NOT UNSPECTACULAR THINGS. / WE'VE COME  
THIS FAR, SURVIVED THIS MUCH, WHAT / WOULD HAPPEN IF WE  
DECIDED TO SURVIVE MONEY TO LOVE HARDER?" — ADA LIMON

Made with sun, plants,  
and water from alleyways  
and other public lands  
in the Johnson Creek  
watershed, Portland,  
Oregon.

By Daniela Naomi Molnar  
May-June 2023

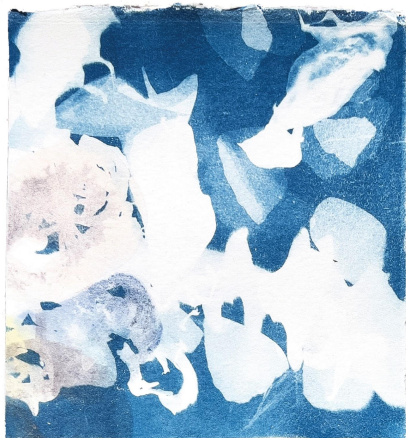
For more information  
about this project and to  
participate, go to: [https://  
bit.ly/climate-form1](https://bit.ly/climate-form1)



THE TIMES ARE URGENT.

LET US SLOW DOWN.

BAYO AKOMOLAFE



Made with sun, plants,  
and water from alleyways  
and other public lands  
in the Johnson Creek  
watershed, Portland,  
Oregon.

By Daniela Naomi Molnar  
May - June 2023

For more information  
about this project and to  
participate, go to: [https://  
bit.ly/climate-form1](https://bit.ly/climate-form1)





Made with sun, plants,  
and water from alleyways  
and other public lands  
in the Johnson Creek  
watershed, Portland,  
Oregon.

By Daniela Naomi Molnar  
May - June 2023

Quote by Elizabeth  
Povinelli

For more information  
about this project and to  
participate, go to: [https://  
bit.ly/climate-form1](https://bit.ly/climate-form1)



# Artist: Rebecca Watkins

## *Urban Wild.*

Postcards. Drawings and Prints

Downtown Portland



*Goose Hollow Telephone Booth*

**Postcards for  
Climate Resilience**

<https://bit.ly/climate-form1>



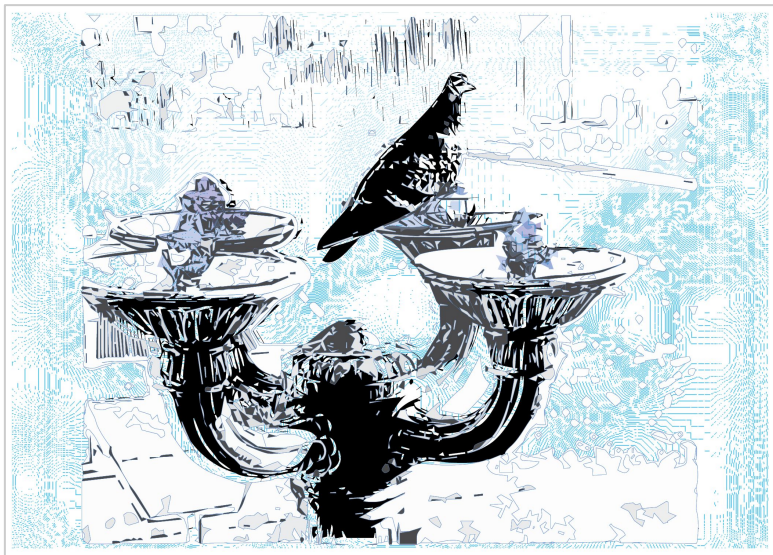
Place  
Stamp  
Here

---

---

---

---



*Providence Park Water Fountain*

**Postcards for  
Climate Resilience**  
<https://bit.ly/climate-form1>



Place  
Stamp  
Here





*Park Blocks Crow*

**Postcards for  
Climate Resilience**

<https://bit.ly/climate-form1>



Place  
Stamp  
Here

---

---

---

---





*Licorice Fern*

**Postcards for  
Climate Resilience**

<https://bit.ly/climate-form1>



Place  
Stamp  
Here

---

---

---

---