

Table of Contents

Introduction	3
Form of County Government.....	3
Population	4
<i>Race and Ethnicity</i>	4
Income	4
Education.....	5
Employment and Industry	6
<i>Employment</i>	6
<i>Industry</i>	6
Transportation and Infrastructure.....	7
<i>Roads and Highways</i>	7
<i>Portland International Airport</i>	7
<i>TriMet</i>	7
Culture and Recreation.....	8
<i>Arts and Entertainment</i>	8
<i>Recreation</i>	8
<i>Climate</i>	9
Fun Facts.....	9

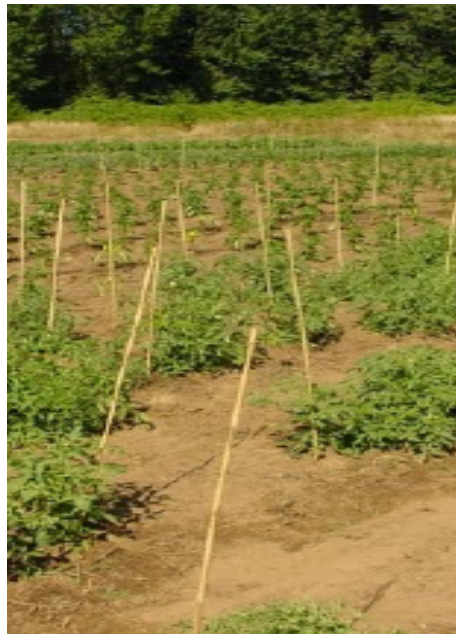
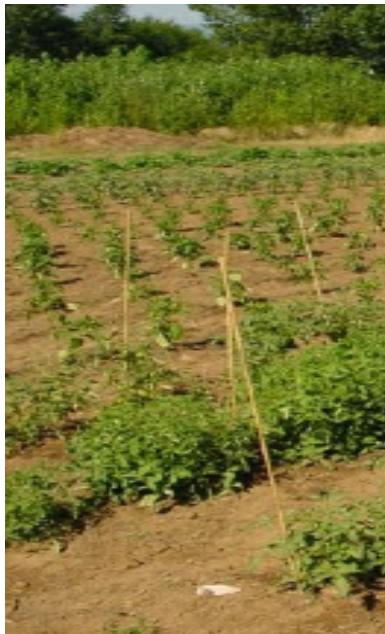
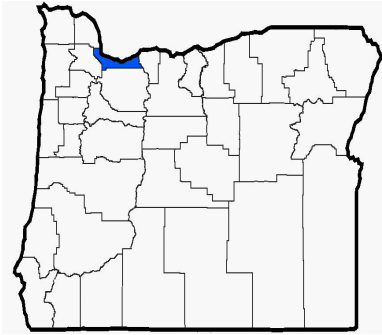


Photo Credit: County CROPS farm in Troutdale, Oregon.

(this page intentionally left blank)

Introduction



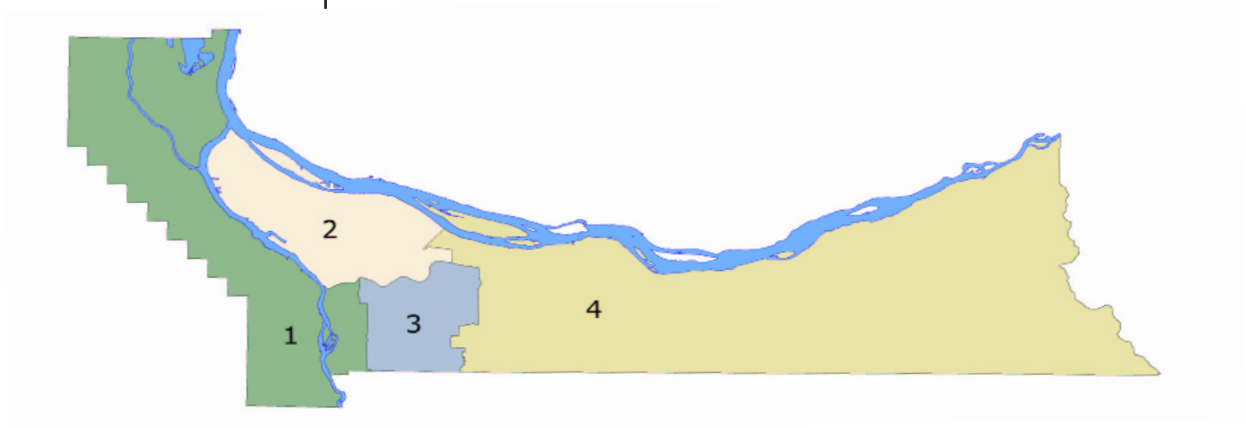
Multnomah County is home to 730,140 citizens, making it the most populous county in the state of Oregon. The county is located in Northwestern Oregon where the Columbia and Willamette rivers meet. It is bordered by the State of Washington to the north and is surrounded by Hood River, Clackamas, Washington and Columbia Counties in Oregon. The county seat is Portland, which is also the largest city in the State of Oregon (see page 10 for detailed map).

Multnomah County is the smallest county in Oregon and includes densely populated urban areas as well as rural land. The County covers 465 square miles, most of which lie in the Willamette Valley between the Cascade Mountains to the east and the Coast Range to the west. The elevation ranges from 77 feet above sea level in Portland to 1,224 feet above sea level at Big Bend Mountain in the Cascade foothills.

Form of County Government

Multnomah County is governed according to its Home Rule Charter. Multnomah County's legislative body, the Board of County Commissioners, is composed of four non-partisan County Commissioners elected from geographical districts and the County Chair, who is elected at large and serves as both chief administrator and legislator. The County has three other independently elected positions -- the Sheriff, the District Attorney and the Auditor.

There are 38 governmental districts located wholly or partially inside of Multnomah County. Portland (population 581,433) and Gresham (population 101,595) are the two largest cities in Multnomah County. Other major governmental entities located within Multnomah County include Metro, Portland Public Schools, the Port of Portland, TriMet, and Portland Community College. Overlapping districts share a tax base, infrastructure and services with Multnomah County.



Population

Race and Ethnicity

Multnomah County's current population is estimated at 730,140 residents, a 10.2% increase since 2000. Multnomah County is growing at a slightly slower rate than the state of Oregon as a whole, which has grown 11.9% since 2000. Multnomah County has a population density of 1,570 people per square mile.

According to the US Census, in 2009 Multnomah County's population was 79.6% White, 6.4% Asian or Hawaiian Native, 5.6% Black, 1.8% American Indian, and 6.6% Other Races. Approximately 10.4% of the County's population is Hispanic. Hispanics are the County's fastest growing racial or ethnic group, with 50.4% population growth between 2000 and 2009, compared with 9.2% population growth for the County as a whole.



Multnomah County is also home to diverse languages and nationalities, with 13.5% of residents born in another country, compared with 9% for Oregon as a whole. Nineteen percent of County residents over the age of 5 spoke a language other than English at home. Of those speaking a language other than English at home, 44% spoke Spanish and 56% spoke another language.

Income

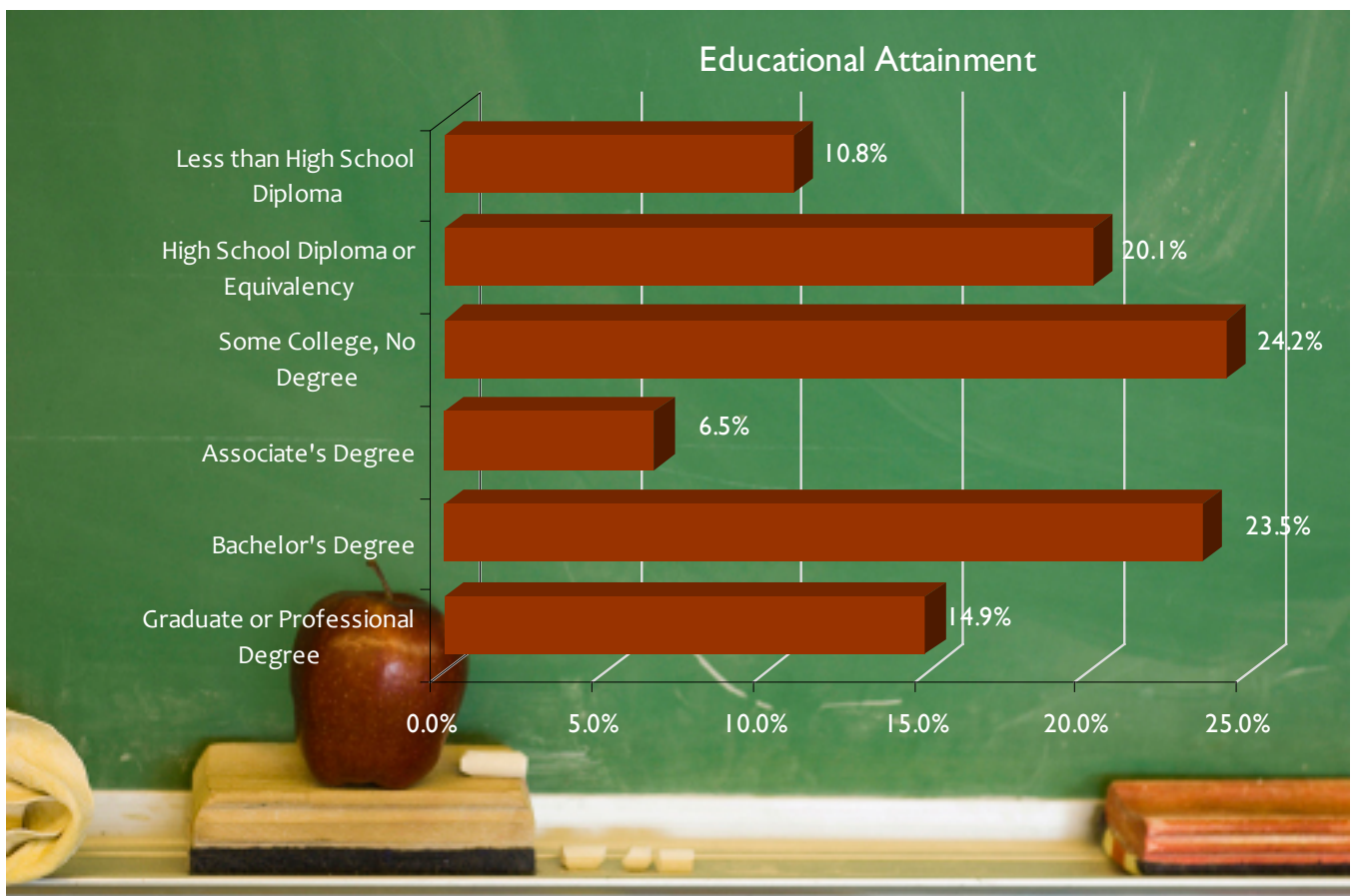
Multnomah County has the one of the highest levels of per capita income in the state of Oregon. According to the federal Bureau of Economic Analysis, Multnomah County had a per capita personal income of \$40,490, third highest in the state. Over the past few years, the County's per capita income has grown at a slower rate than the state and the nation. For the first time in two decades, income growth decreased by -2.71% from 2008 to 2009.

Education

There are over 100,000 students attending primary and secondary schools in Multnomah County. Of these students, 87% attend a public school. Public school districts in Multnomah County include Portland Public Schools, Parkrose, Reynolds, Gresham-Barlow, Centennial, Corbett, David Douglas, and Riverdale.

There are a number of post-secondary schools in Multnomah County. Portland State University has a total enrollment of almost 28,000 for the 2009-2010 school year. Multnomah County is also home to Oregon Health Sciences University, which educates health professionals and is a leader in biomedical research. Other colleges include Lewis & Clark College, the University of Portland, and Reed College. Portland Community College and Mount Hood Community College both educate County residents and are partially supported by local property taxes.

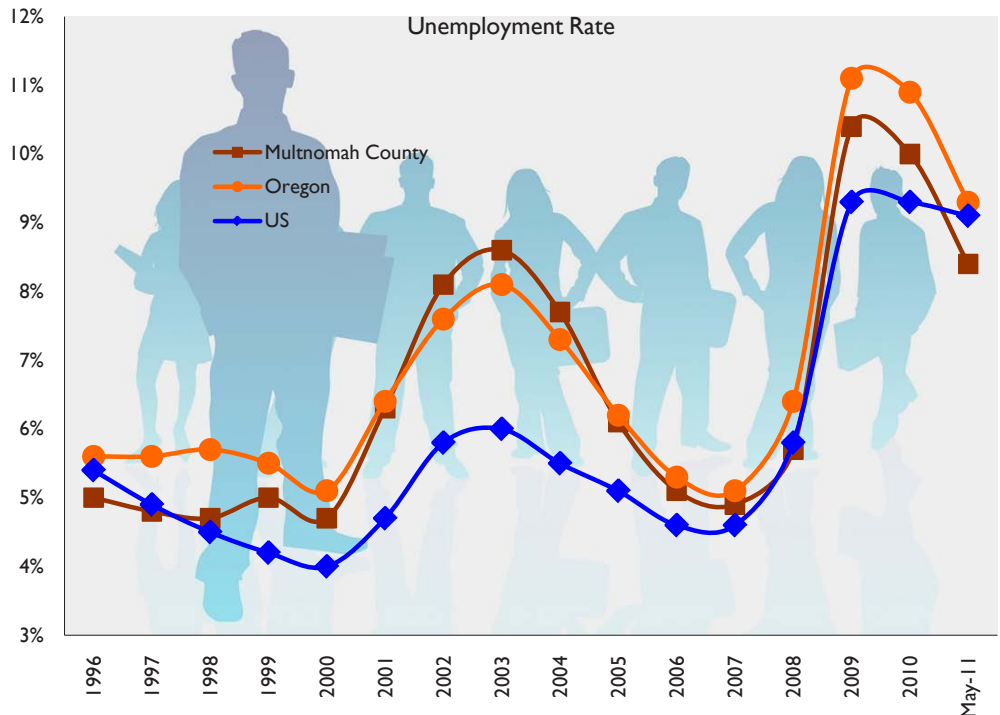
Multnomah County residents have above average educational achievement for the state of Oregon. Eighty-eight percent of county residents 25 years and over had graduated from high school, and 38.4% had achieved a bachelor's degree or higher.



Employment and Industry

Employment

Multnomah County saw a net decrease of 2,400 jobs (-0.6%) between November 2009 and November 2010. The State of Oregon as a whole lost roughly the same percentage of its jobs during this period, close to 10,000 jobs. Multnomah County's unemployment rate has declined faster than the Oregon and national rates. The County's unemployment rate has decreased from 10.9% in 2010 to 8.4% in May 2011.



Source: Oregon Labor Market Information System (OLMIS)

Industry

In 2010, the three industries with the most employees in Multnomah County were trade, transportation and utilities at 18.6% of total employment, government (including federal, state and local) at 16.8%, and professional and business services (including scientific and technical services and management companies) and education and health services both at 14.5% of employment.

The Port of Portland operates Portland's harbor, the fourth largest export port on the West Coast. It handles more than \$16 billion in waterborne trade annually and is the largest wheat export port in the United States.

Multnomah County leads the country in craft brewing and distilling, a growing trend in the beverage industry. According to the Oregon Brewers Guild, the Portland metro area is the largest craft brewing market in the US with the most number of breweries at 53, more than any other city in the world. The Oregon Brewers Festival, a craft brewing festival held on Portland's waterfront, attracts over 70,000 visitors. The County is also home to 8 craft distillers.

Transportation and Infrastructure

Roads and Highways

Portland International Airport

TriMet

Multnomah County is served by an international passenger airport, a local bus and light rail system, and the interstate highway system. Approximately 63.6% of Multnomah County residents drive alone to work. Eleven Percent of County residents took public transportation, 10% carpoled, and the remainder got to work by biking, walking, or working from home.

Multnomah County is connected to the wider region by seven major highways: Interstates 5, 84, 205, and 405 and U.S. Highways 26, 30, and 99. The County operates and maintains over 300 miles of roads and 18 vehicular bridges, including 6 bridges over the Willamette River.

Portland International Airport is located on the northern border of Multnomah County. Portland International handled 13.4 million passengers in 2010, making it the 30th largest airport in the United States. The airport also serves as a regional hub for flights to smaller cities in Oregon and other Western destinations.

The Tri-County Metropolitan Transportation District (TriMet) operates 81 bus lines, a light rail system, and a commuter rail system that together connect Multnomah County with neighboring areas. Riders boarded a TriMet bus, MAX train or WES train 99.3 million times in Fiscal Year 2010. According to the agency's website, TriMet carries more people than any other U.S. transit system its size.



Culture and Recreation

Arts and Entertainment



Recreation

Multnomah County is a regional destination for the visual and performing arts and hosts numerous festivals, concerts, and sporting events every year. The County also has a mild climate and extensive public space for relaxing or exploring.

The County is home to major arts and cultural institutions, including the Portland Classical Chinese Garden, Oregon Museum of Science and Industry, the Oregon Symphony, and the Portland Art Museum. Festivals are held year-round in Multnomah County, including the Oregon Seafood and Wine festival, the Portland Rose Festival, the Mt. Hood Jazz Festival, and the Holiday Ale Festival.

Multnomah County is also home to three professional sports teams: the Portland Trail Blazers (National Basketball Association), the Portland Winterhawks (Western Hockey League), and the Portland Timbers (Major League Soccer).

Multnomah County is home to over 37,000 acres of parks and numerous natural areas. The gateway to the scenic Columbia River Gorge is located in eastern Multnomah County. The Gorge is a spectacular river canyon, 80 miles long and up to 4,000 feet deep, with numerous areas for hiking, camping, boating, and day trips. Portland's Forest Park, the largest urban forested natural area in the nation, covers over 5,000 acres of urban land and has over 70 miles of trails. The County also hosts Portland's International Rose Test Garden, the oldest rose garden in the nation.



Photo Credit: Frank Kovalchek

Columbia River Gorge

Climate



Multnomah County typically has a mild climate that is heavily moderated by the Pacific Ocean. The average daily high temperature in January is 45.4 degrees Fahrenheit, while the average daily high in July is 79.9 degrees. Multnomah County experiences greater cloud cover and precipitation during winter months – there is an average of 24.4 cloudy days in January, while the average for July is 9.9 cloudy days.



Photo Credit: Trevor Miller

Fun Facts

- Portland was almost named Boston. City founders Asa Lovejoy from Boston, Massachusetts, and Francis Pettygrove of Portland, Maine wanted to name the city after their hometowns. Unable to agree, they flipped a coin, now known as the "Portland Penny". Pettygrove won.
- There is no sales tax in Oregon.
- Many of the characters in The Simpsons are named after streets and locations in Portland, Simpsons' creator Matt Groening's hometown.
- The Portland Saturday Market is the largest continuously operating open-air crafts market in the United States.
- Powell's City of Books, occupying an entire city block in downtown Portland, is the world's largest independent bookstore.
- More Asian elephants (27 to date) have been born in Portland than in any other North American city.
- Oregon is one of just two states where everyone enjoys the luxury of having their gas pumped for them. It's the law!

Meet Multnomah County

fy2012 adopted budget

