

PUBLIC SAFETY TRENDS SPECIAL ANALYSIS

Trends in Reported Part 1 Crime
December 4th, 2012



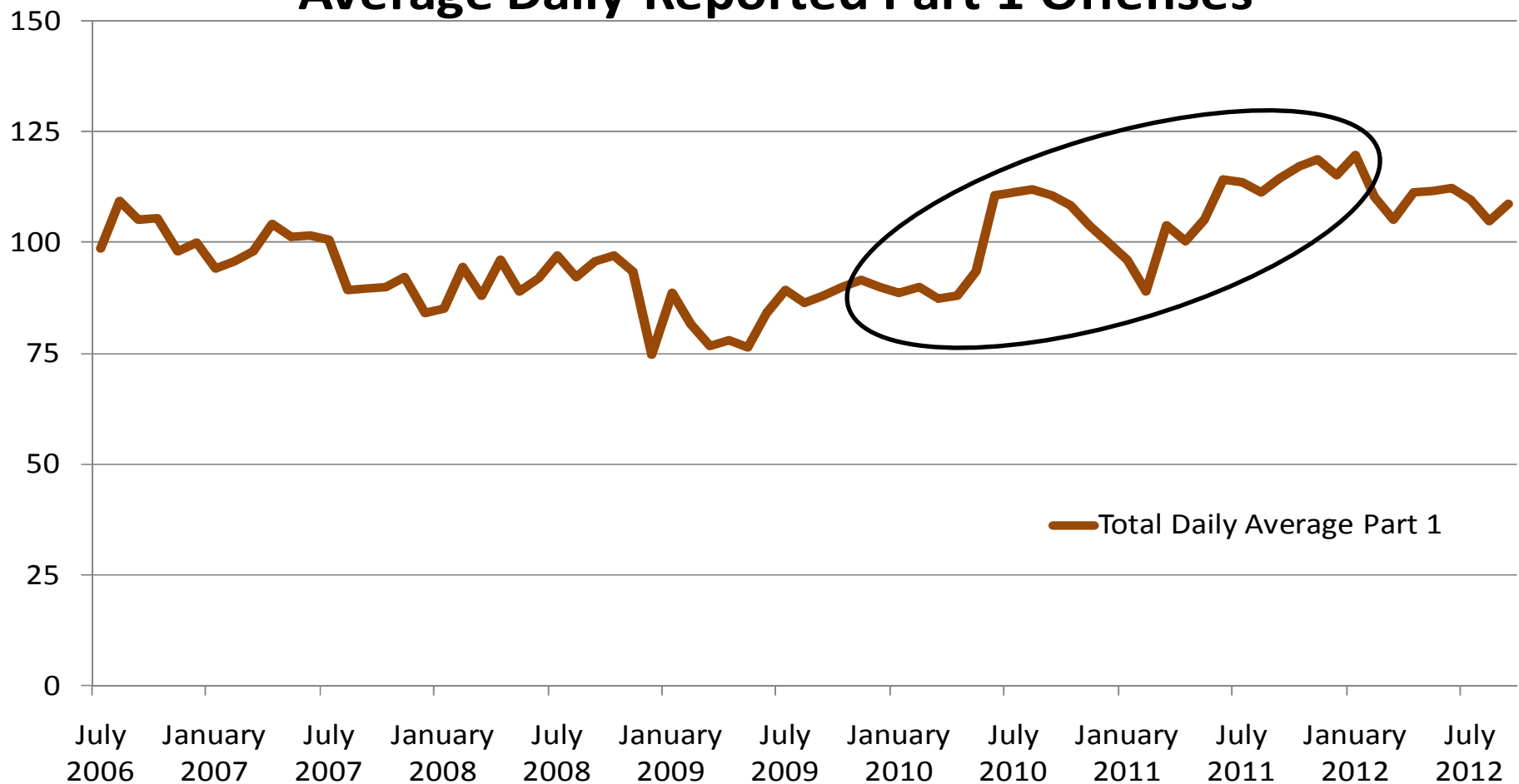
Trends in Reported Part 1 Crime

- We experienced an increase in reported Part 1 crime between Jan. 2010 and Jan. 2012.
- This increase in reported crime was driven by Theft from Auto.
- We did not experience similar rise in reported violent crime during this time period.
- Since January 2012 we have experienced a drop in reported part 1 crime.

Reported Incidents of Part 1 Crime

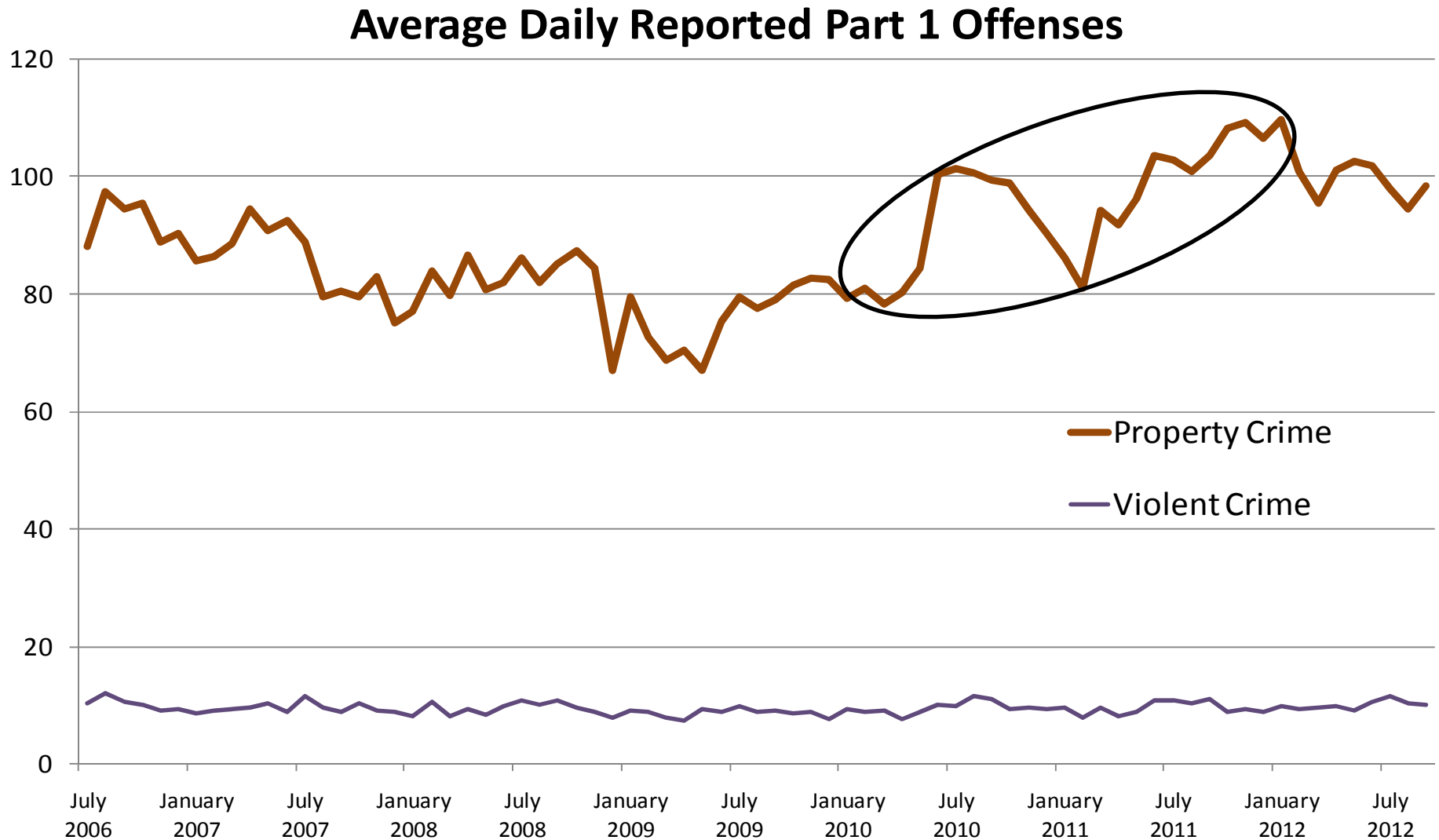
- January 2010 = 89 avg. per day, January 2012 = 120 avg. per day;
- Part 1 crimes are defined by the FBI and include Homicide, Robbery, Assault, Rape, Burglary, Arson and Larceny.

Average Daily Reported Part 1 Offenses



Reported Incidents of Part 1 Crime by Group

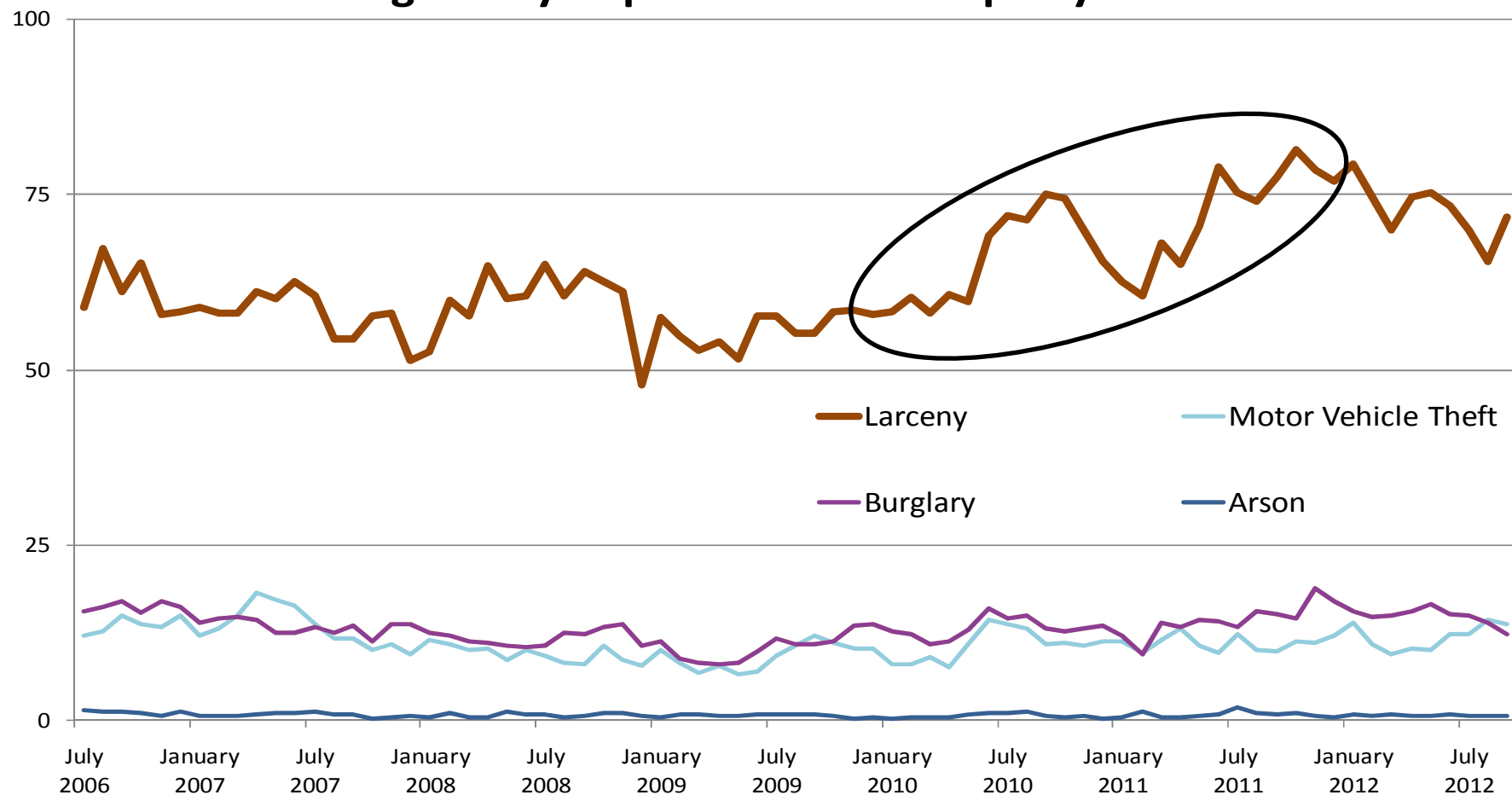
- January 2010=79 avg. per day, January 2012=110 avg. per day
- Part 1 Property offenses include Arson, Burglary, and Larceny.



Reported Incidents of Part 1 Crime – Property Offenses

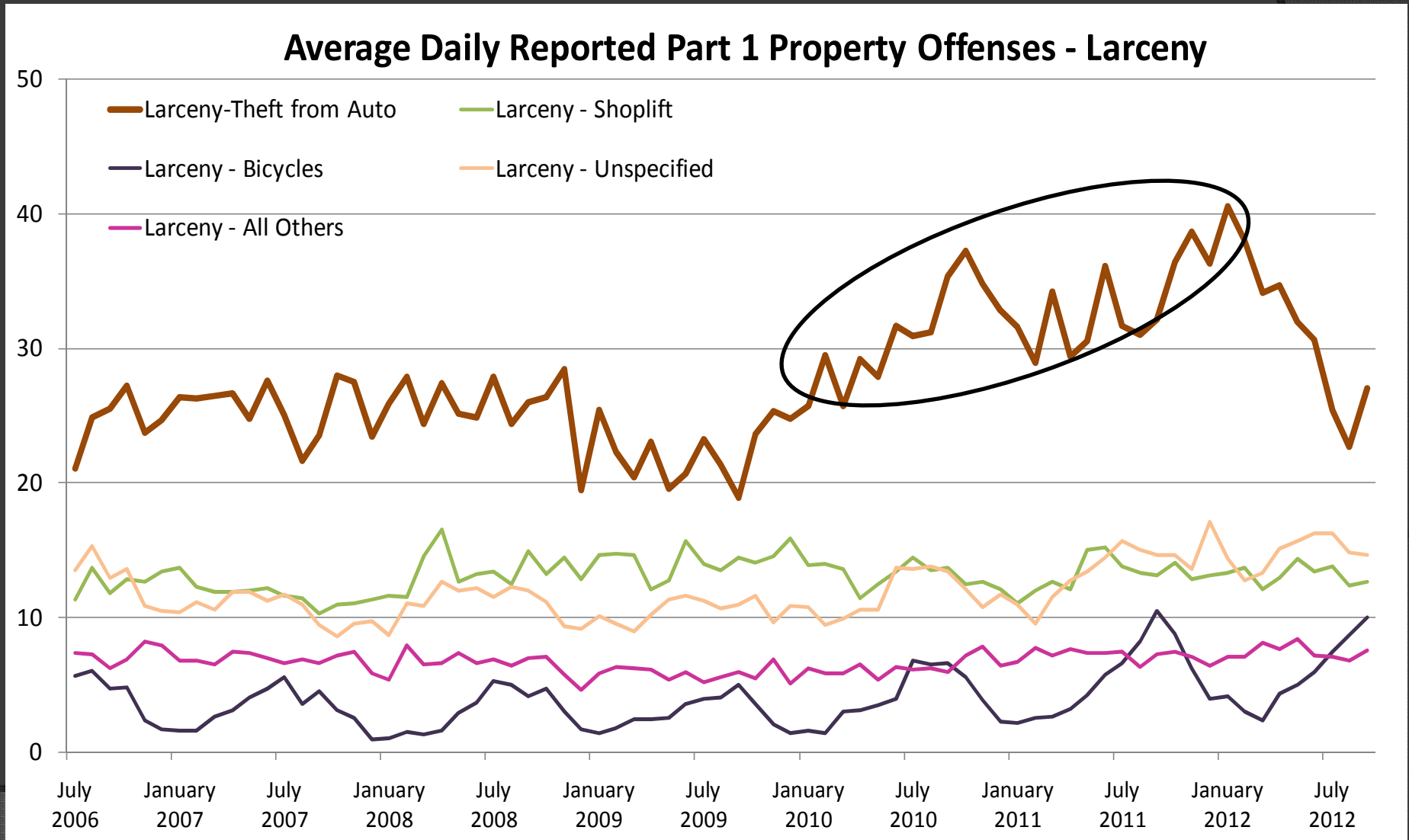
- January 2010=58 avg. per day, January 2012=79 avg. per day;
- Larceny includes theft from auto, vehicle parts / accessories theft, bicycle theft, pickpocket/purse snatch, shoplift, and unspecified theft.

Average Daily Reported Part 1 Property Offenses



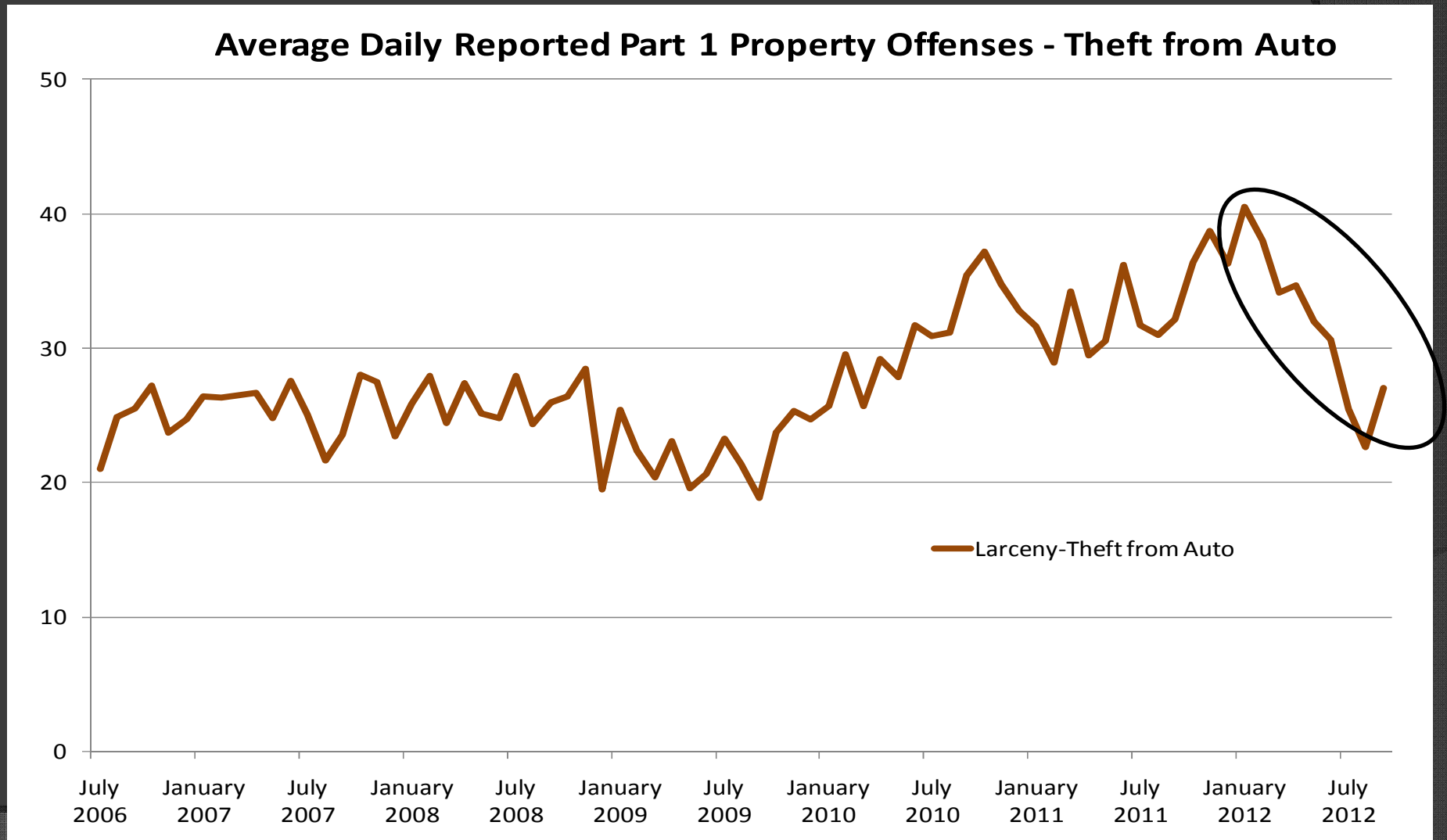
Reported Incidents of Part 1 Crime – Property Offenses - Larceny

- Theft from Auto January 2010=26 avg. per day, January 2012=41 avg. per day
- Theft from auto includes theft of parts and accessories and theft from motor vehicle.



Reported Incidents of Index 1 Crime – Property Offenses – Theft from Auto

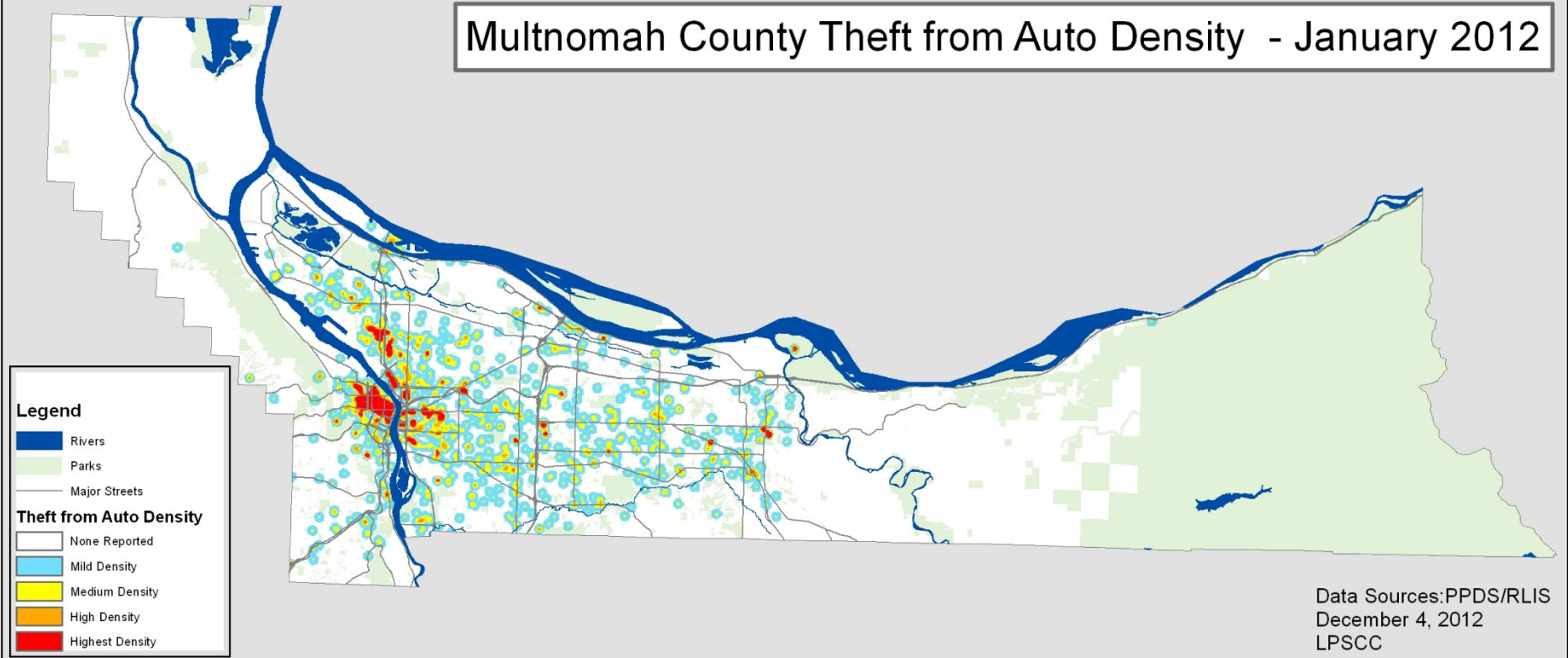
- Since January 2012, there has been a substantial decline in reported Theft from Auto
- January 2012=41 avg. per day, August 2012=23 avg. per day



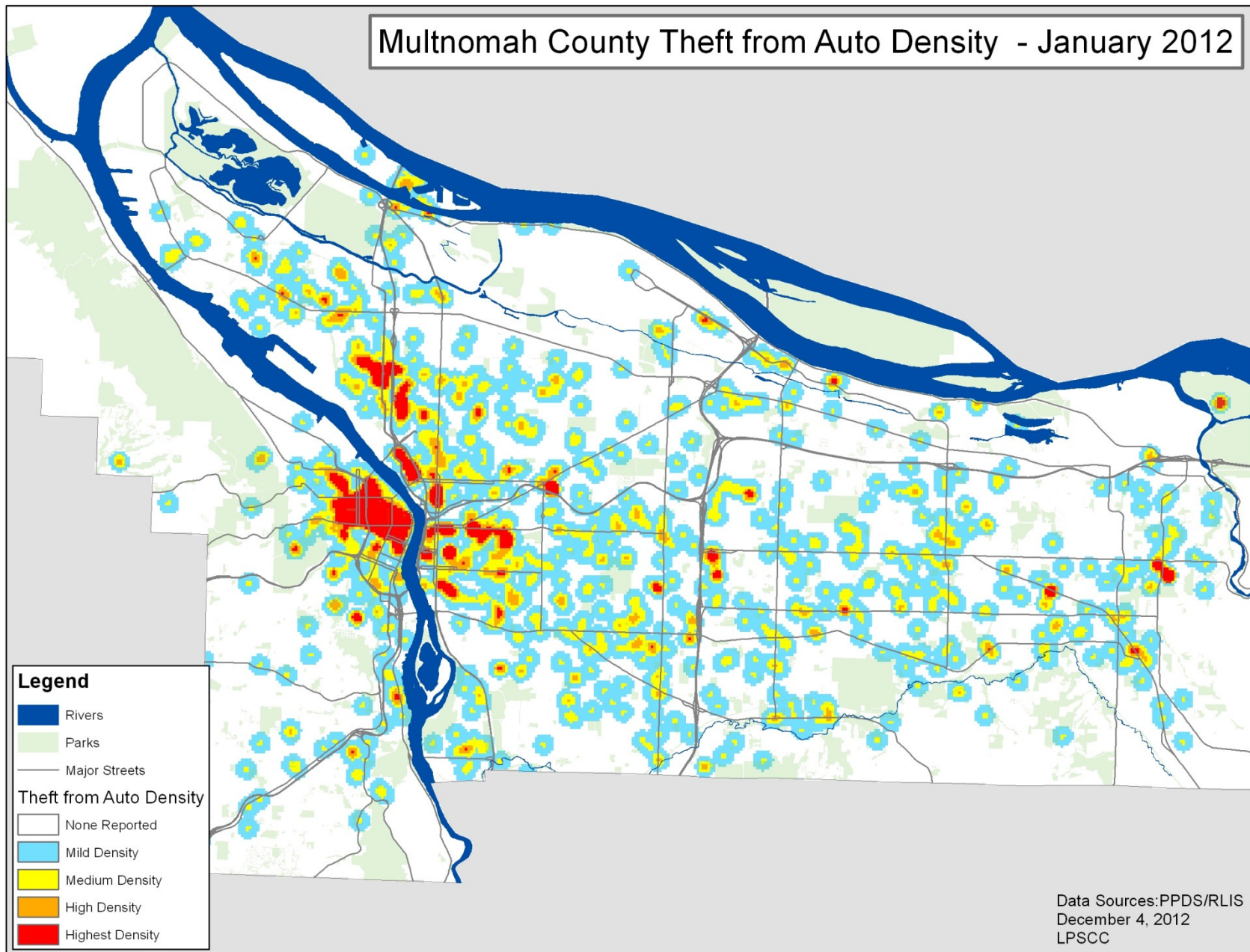
Trends in Reported Part 1 Crime

- We experienced an increase in reported Part 1 crime between Jan. 2010 and Jan. 2012.
- This increase in reported crime was driven by Theft from Auto.
- Since January 2012 we have experienced a drop in reported part 1 crime.
- This distribution of reported Theft from Auto is not uniform across the county
- The rate of change of reported Theft from Auto is not uniform across the county.

Multnomah County Theft from Auto Density - January 2012

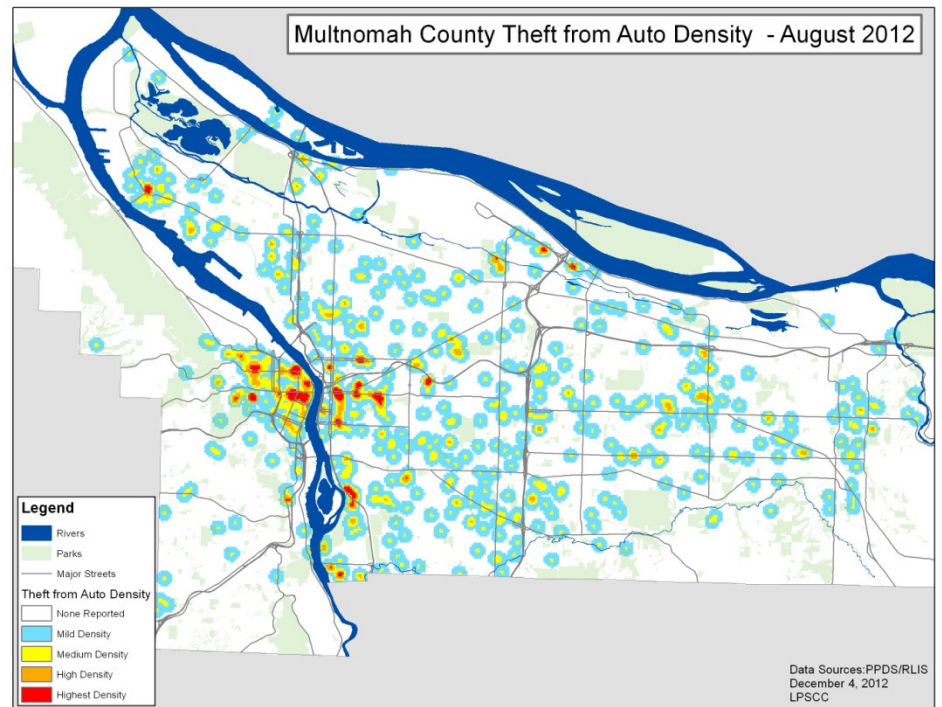
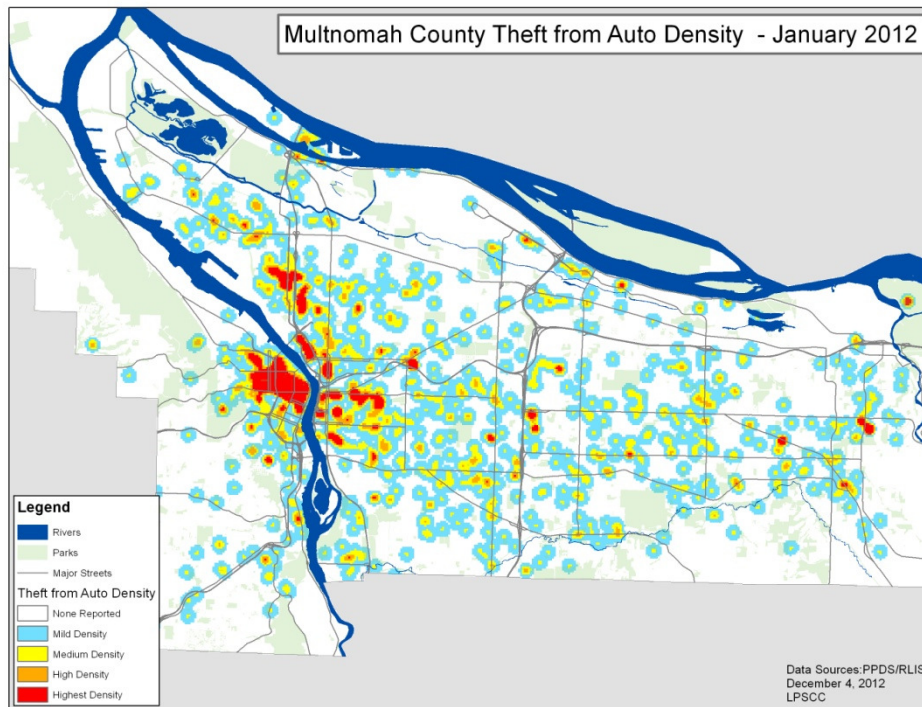


Multnomah County Theft from Auto Density - January 2012



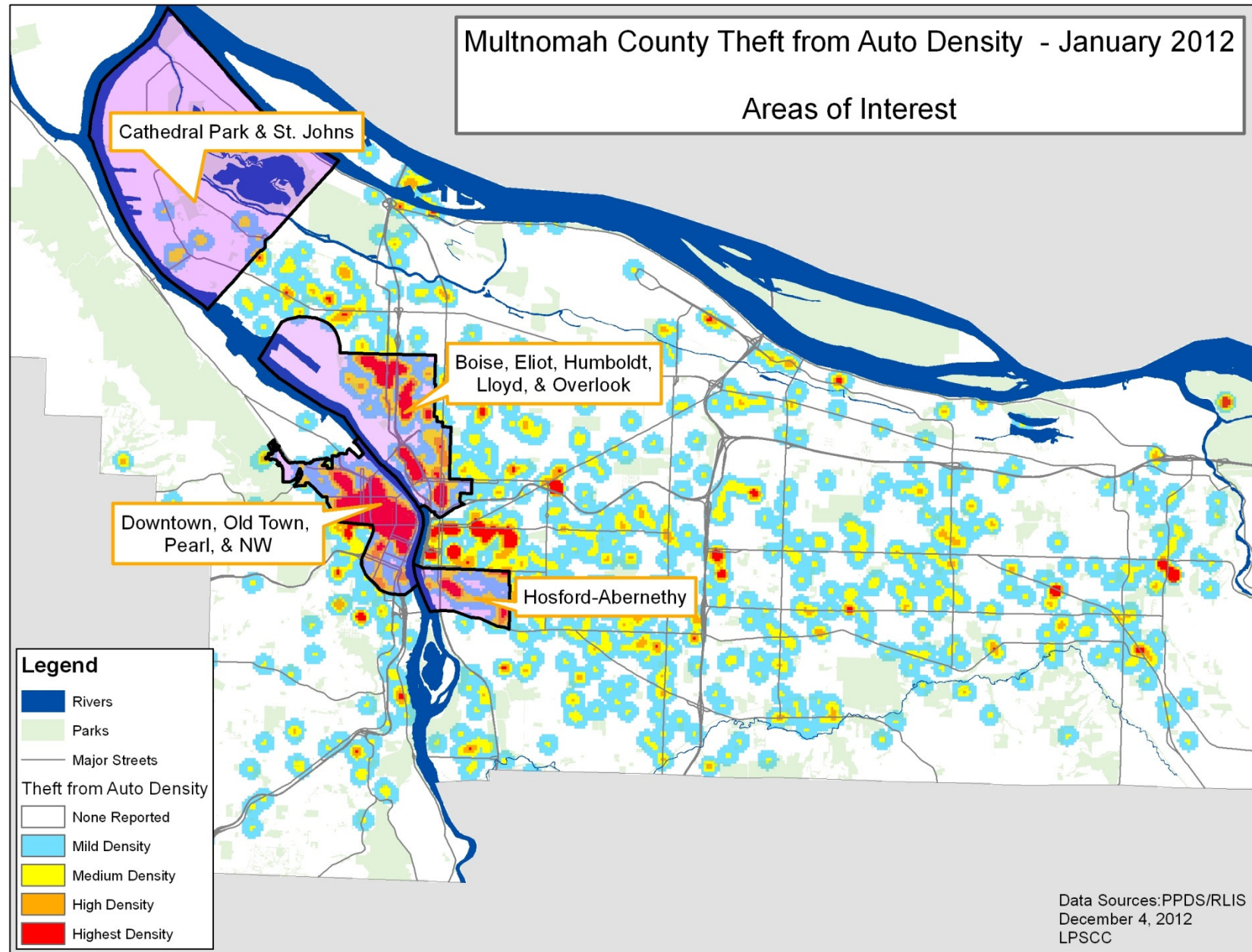
January 2012 – Peak Month

August 2012 – Low Month



Multnomah County Theft from Auto Density - January 2012

Areas of Interest



Downtown, Old Town/Chinatown, Pearl District, & Northwest District Neighborhoods

January 2012

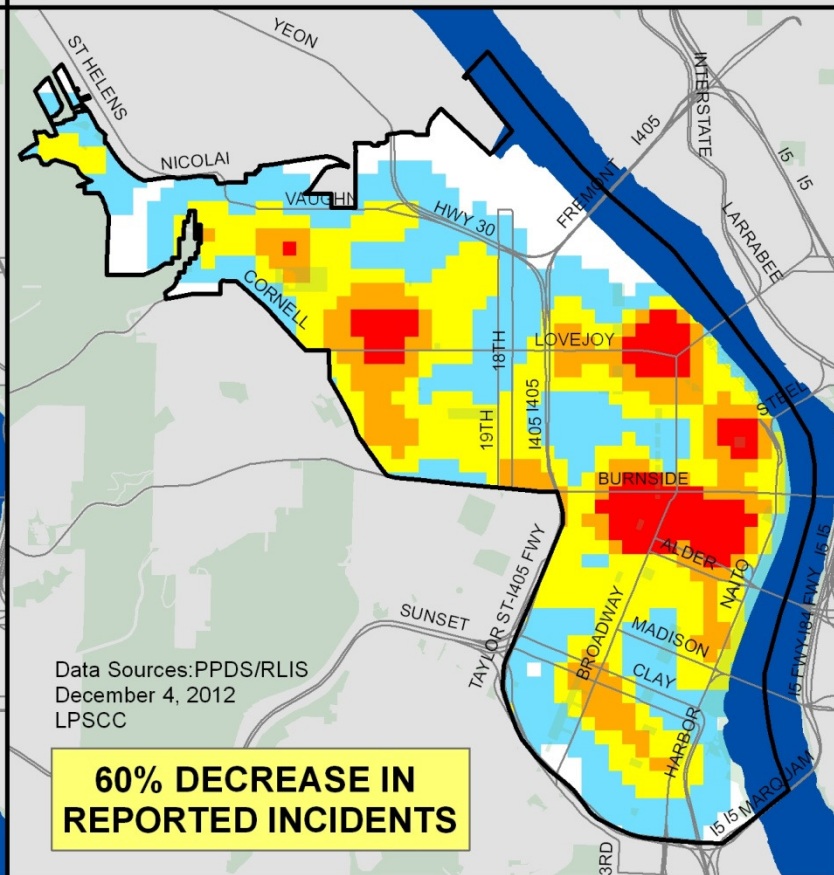
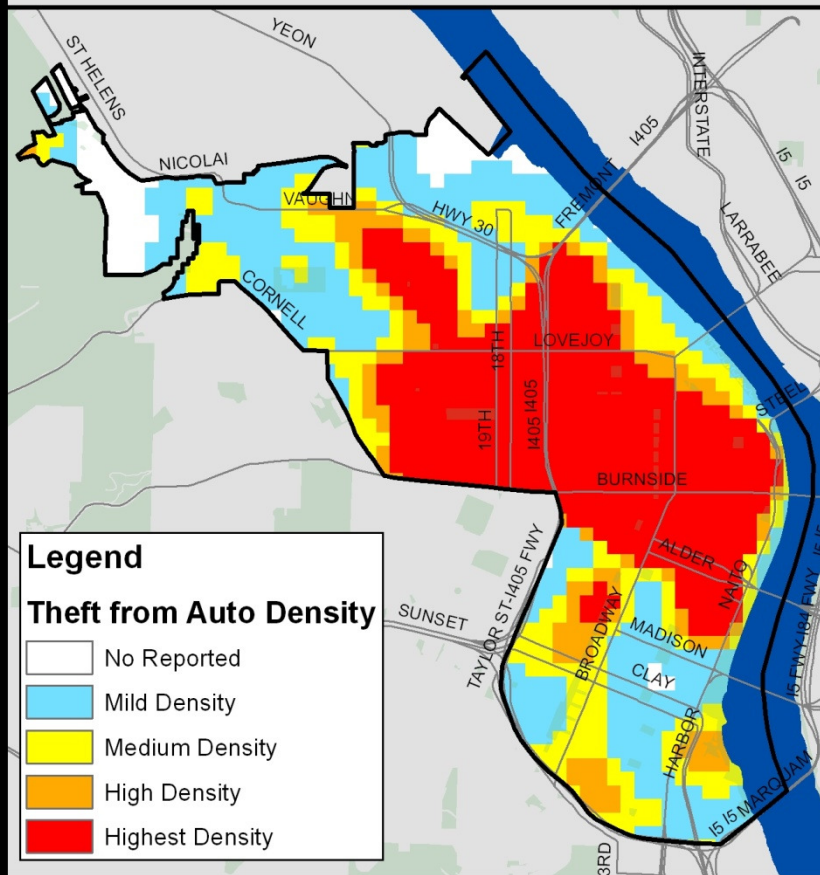
201 reported thefts from auto

17% of all thefts from auto in Multnomah County during this month occurred in this zone.

August 2012

86 reported thefts from auto

13% of all thefts from auto in Multnomah County during this month occurred in this zone.



Boise, Eliot, Humboldt, Lloyd District, & Overlook Neighborhoods

January 2012

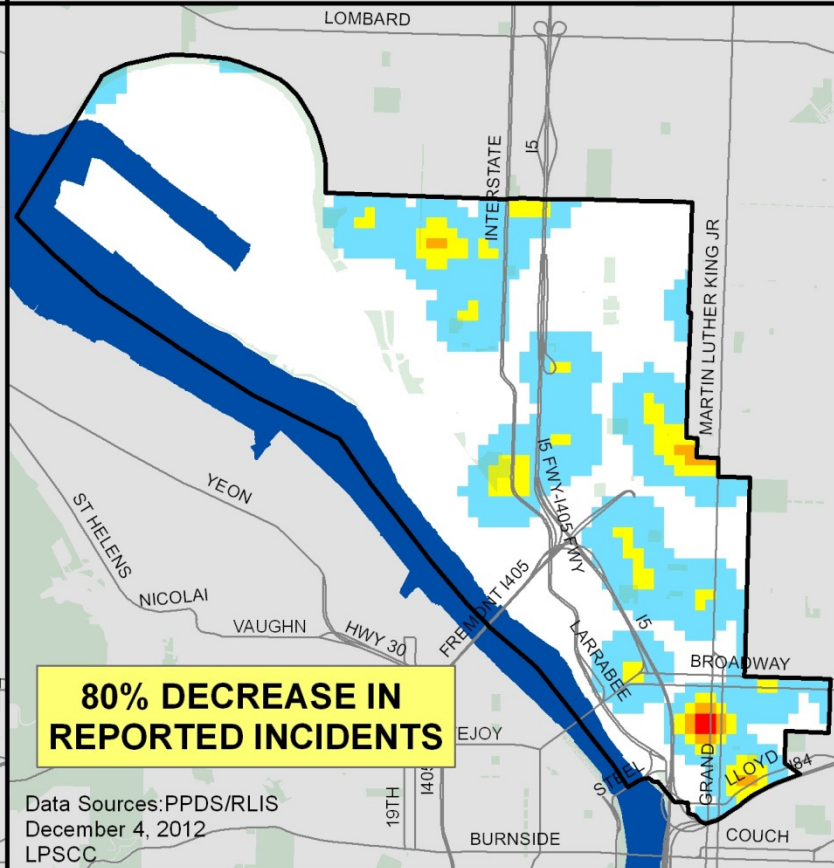
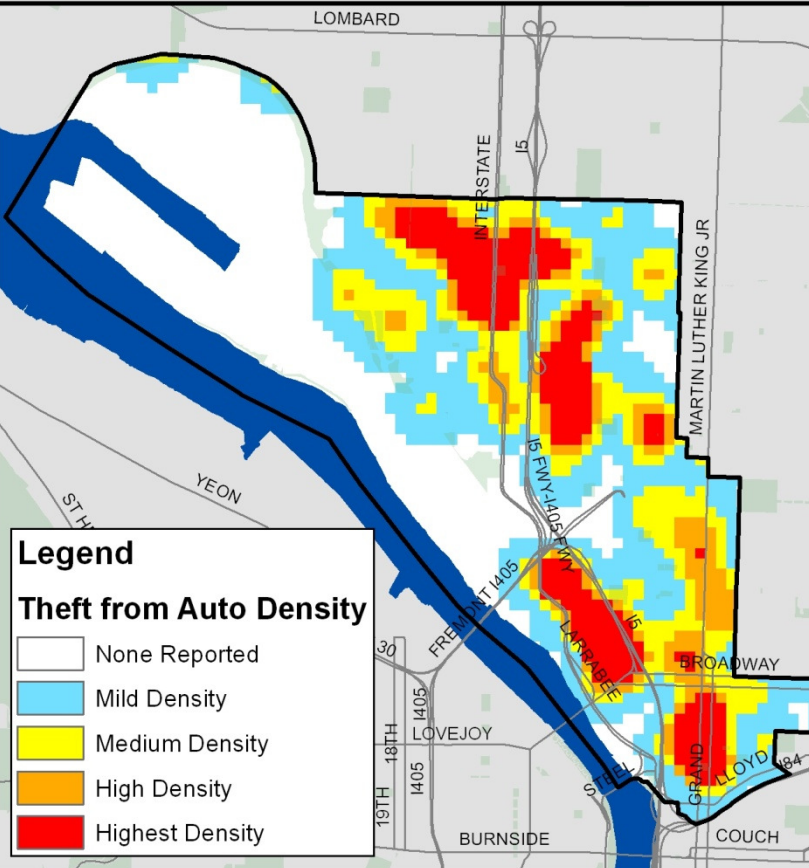
128 reported thefts from auto

11% of all thefts from auto in Multnomah County during this month occurred in this zone.

August 2012

24 reported thefts from auto

4% of all thefts from auto in Multnomah County during this month occurred in this zone.



Hosford-Abernethy Neighborhood

January 2012

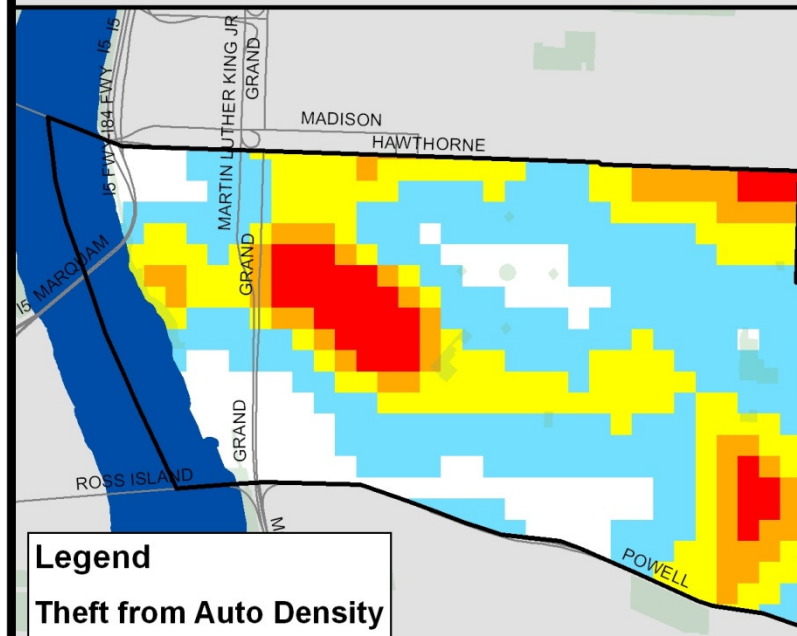
29 reported theft from auto

In the top 10 of neighborhoods with the most thefts from auto during this month

August 2012

8 reported theft from auto

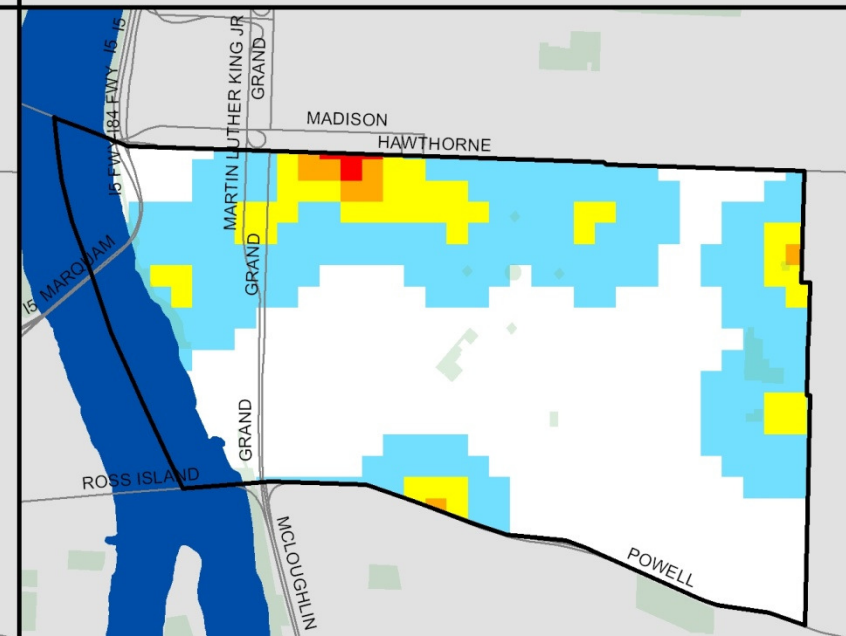
Between January and August of 2012, there was a 45% decrease countywide in thefts from auto. This neighborhood saw over a 70% decrease.



Legend

Theft from Auto Density

- None Reported
- Mild Density
- Medium Density
- High Density
- Highest Density



**70% DECREASE IN
REPORTED INCIDENTS**

Data Sources: PPDS/RLIS
December 4, 2012
LPSCC

Cathedral Park & St. Johns Neighborhoods

January 2012

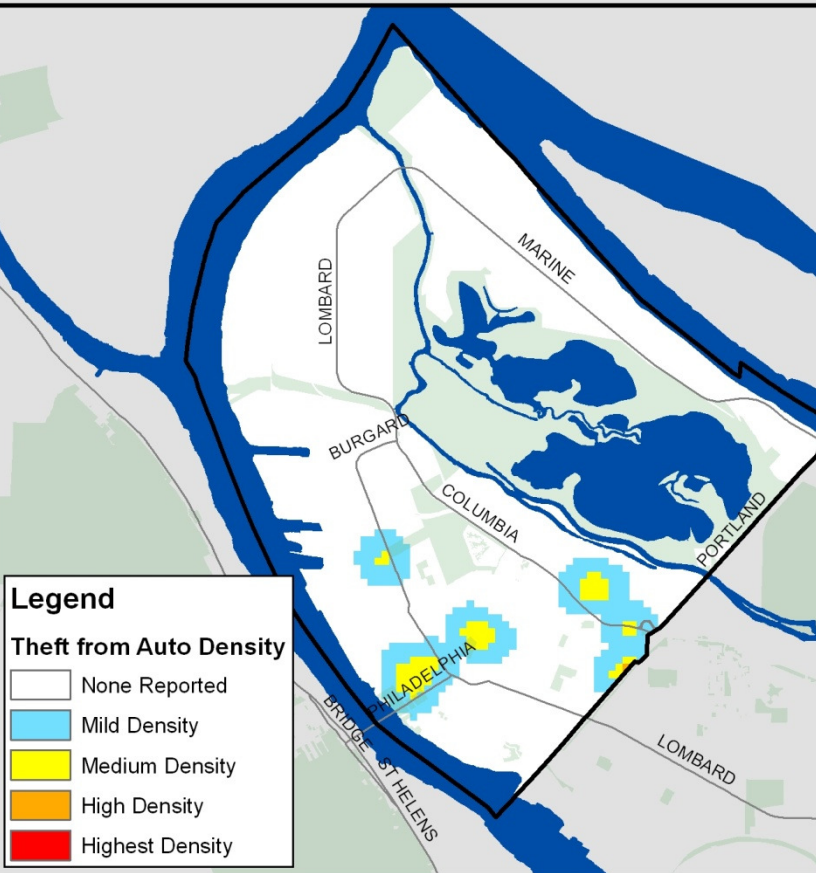
10 reported thefts from auto

Less than 1% of the thefts from auto in Multnomah County occurred in these neighborhoods during this month.

August 2012

27 reported thefts from auto

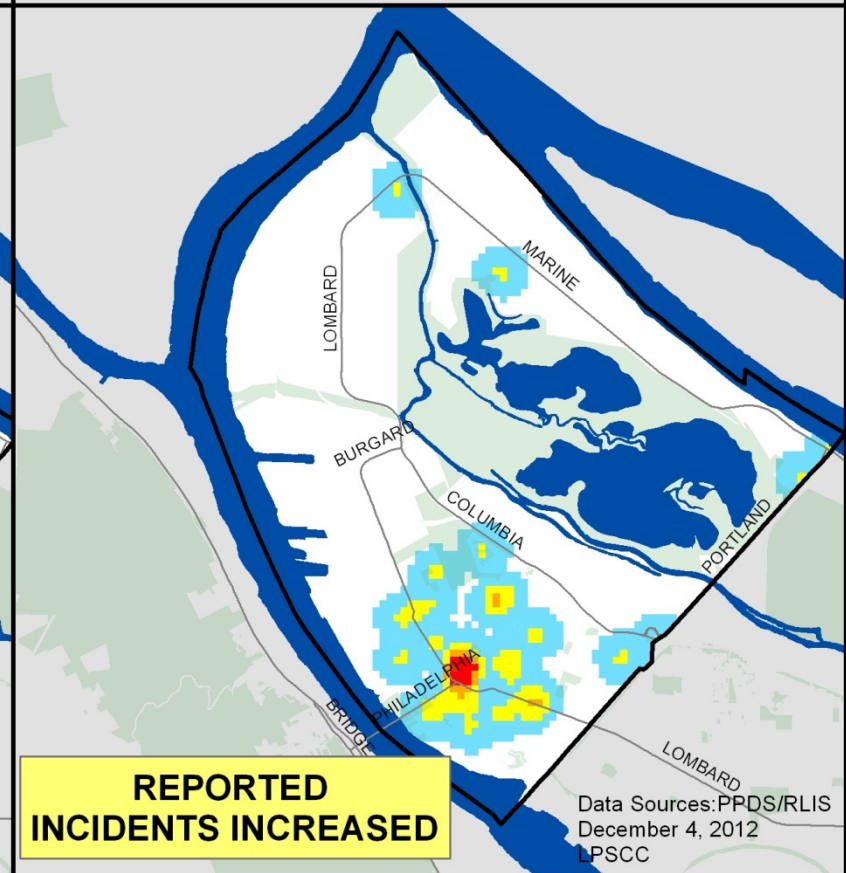
This area saw a 170% increase in thefts from auto while countywide there was a 45% decrease.



Legend

Theft from Auto Density

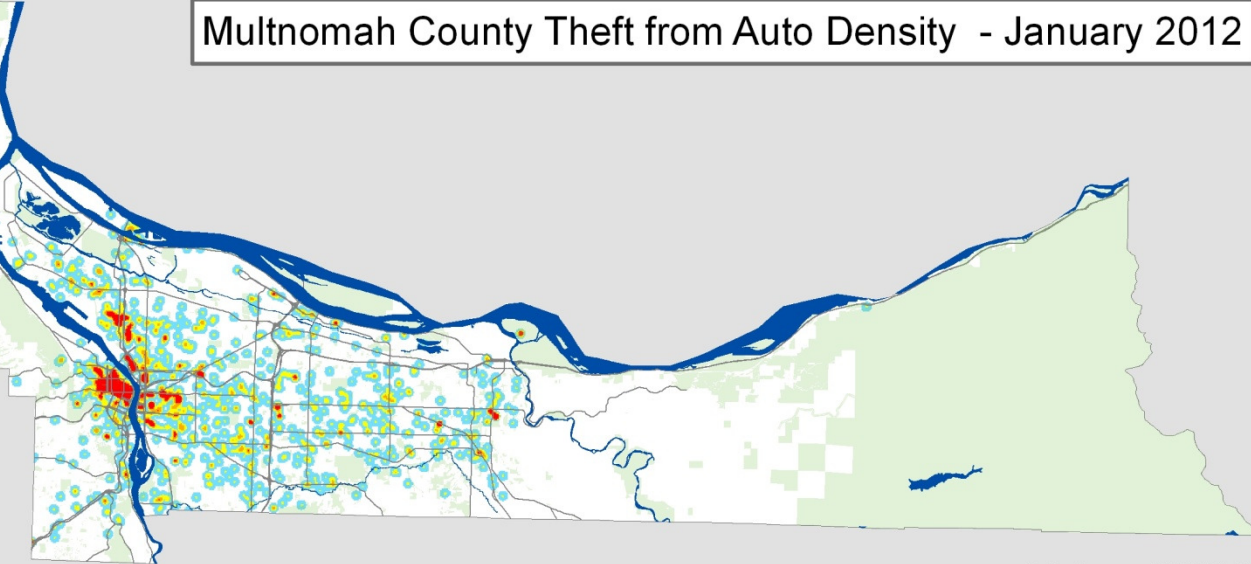
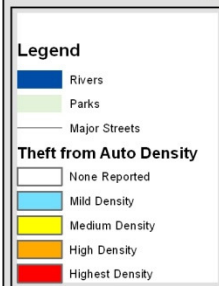
- None Reported
- Mild Density
- Medium Density
- High Density
- Highest Density



**REPORTED
INCIDENTS INCREASED**

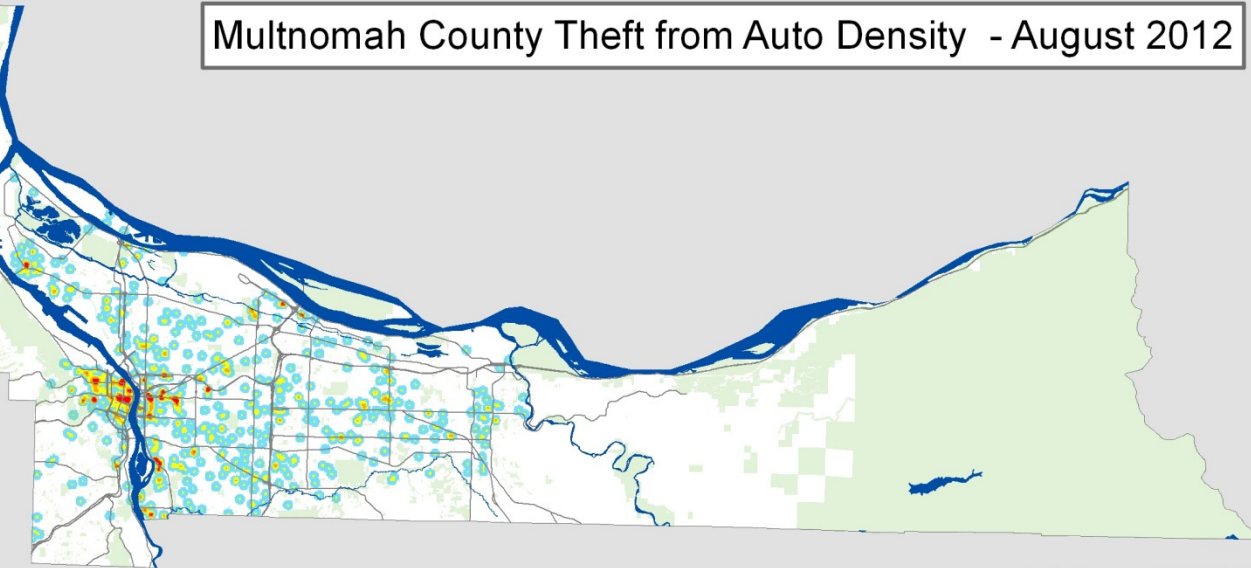
Data Sources: PPDS/RLIS
December 4, 2012
LPSCC

Multnomah County Theft from Auto Density - January 2012



Data Sources: PPDS/RLIS
December 4, 2012
LPSCC

Multnomah County Theft from Auto Density - August 2012



Data Sources: PPDS/RLIS
December 4, 2012
LPSCC