

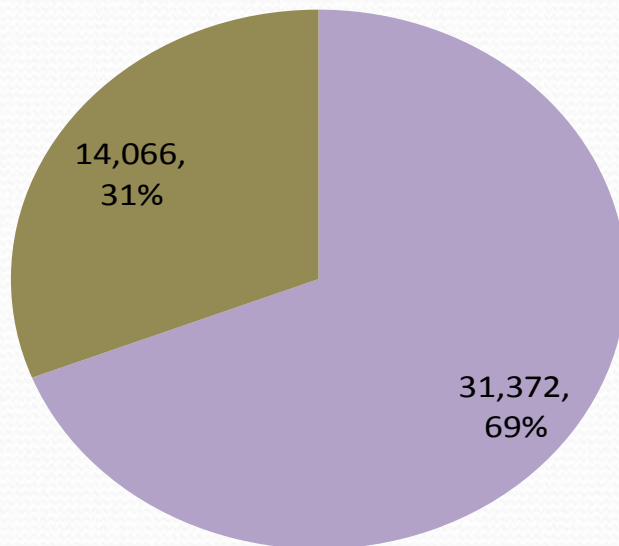


Justice Reinvestment in Action: Community Corrections

Scott Taylor, Jason Myers, Kiki Parker Rose, Mark
Royal

Oregon's System At A Glance

Adult Criminal Justice Population



■ Community Supervision ■ Incarceration

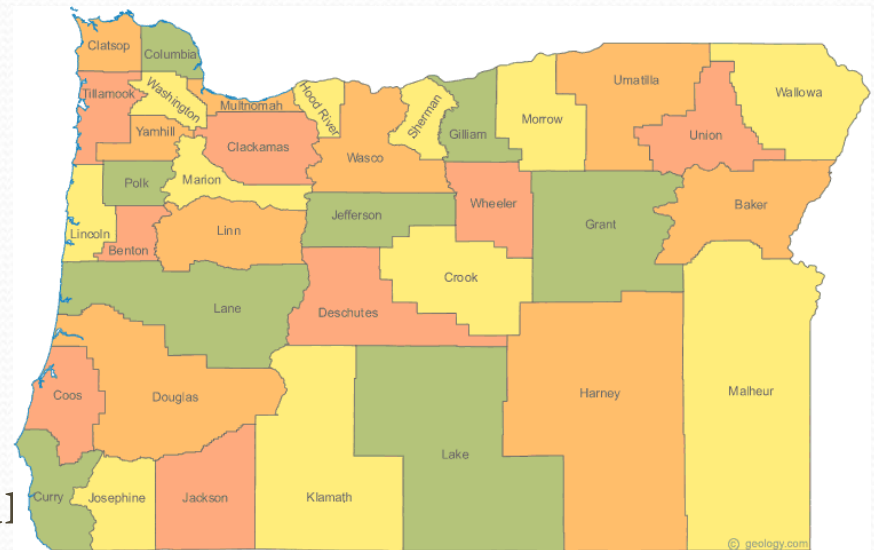
Community Supervision Three-Year Outcomes:

- ▶▶ Parole: 75% do not recidivate
- ▶▶ Local Control: 67% do not recidivate
- ▶▶ Probation: 80% do not recidivate

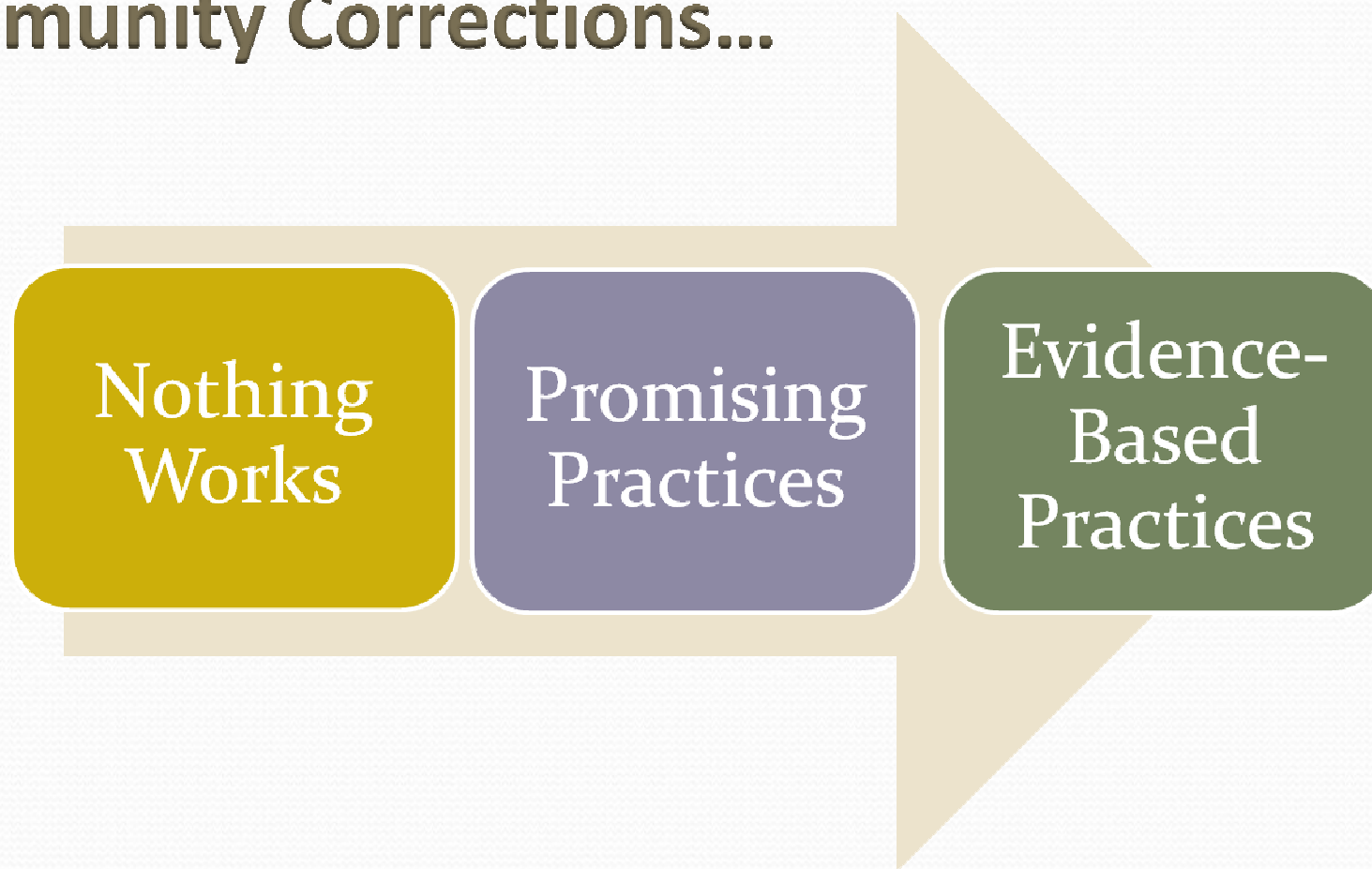
Foundation for Oregon's

Success

- ✓ Community Corrections Partnership Act 1997
- ✓ Advancements in Evidence-Based Practices
- ✓ Collaboration Among System Partners
- ✓ Strong Leadership at State and Local Levels



Over Twenty Years of Improvements in Community Corrections...

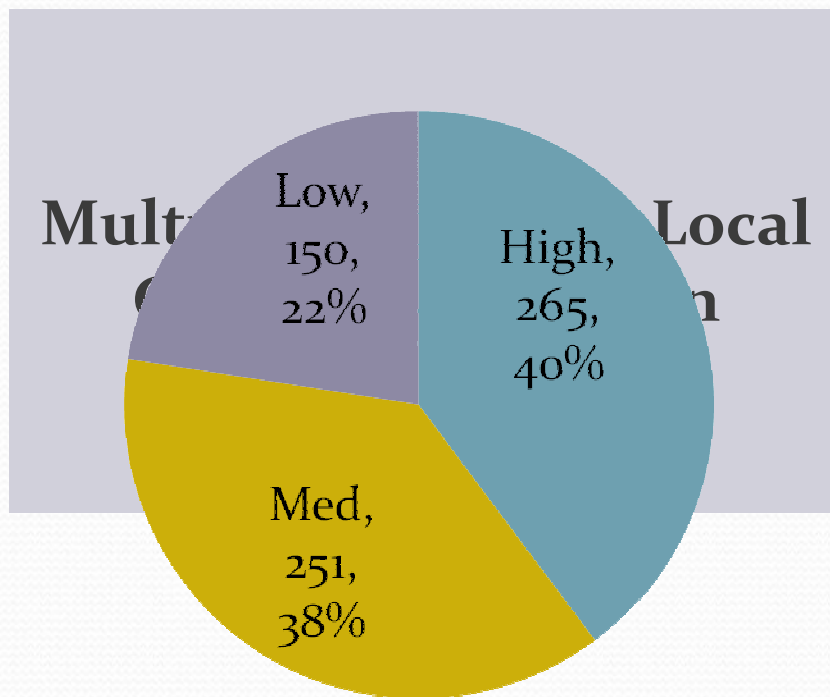


So What Does the “Ideal” Community Corrections System Look Like Today?

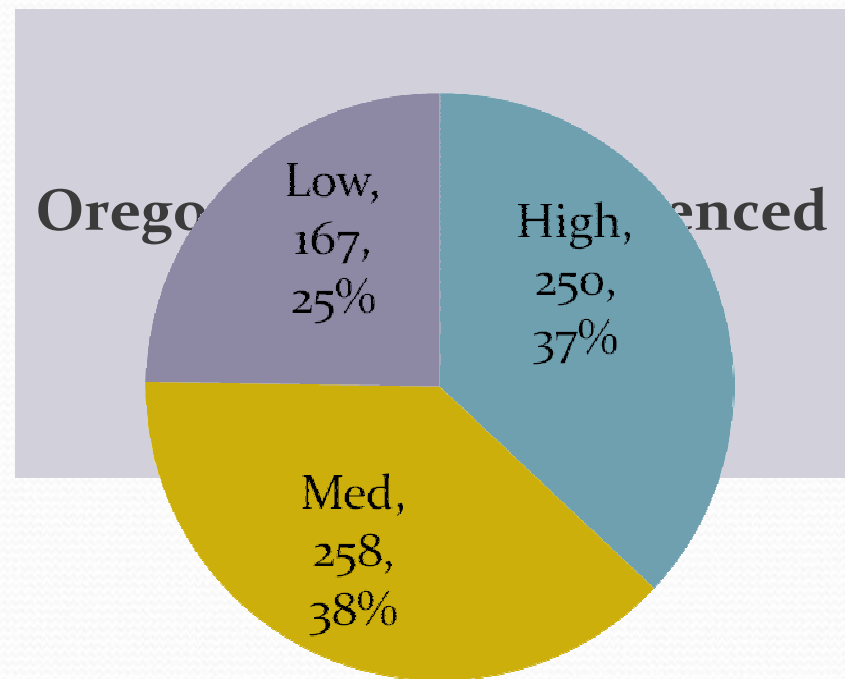
- Risk Tools
- Intensified Focus on Higher Risk Clients
- Reasonable Caseload Sizes
- Swift & Certain Sanctions
- Available Treatment Services & Programming
- Use of Punishments & Rewards



Oregon's System At A Glance



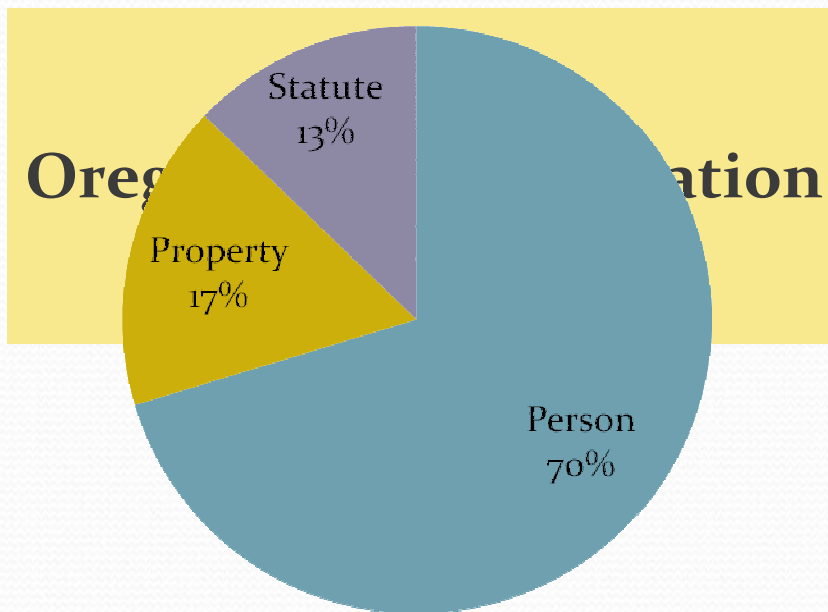
Offender Group Size: 666



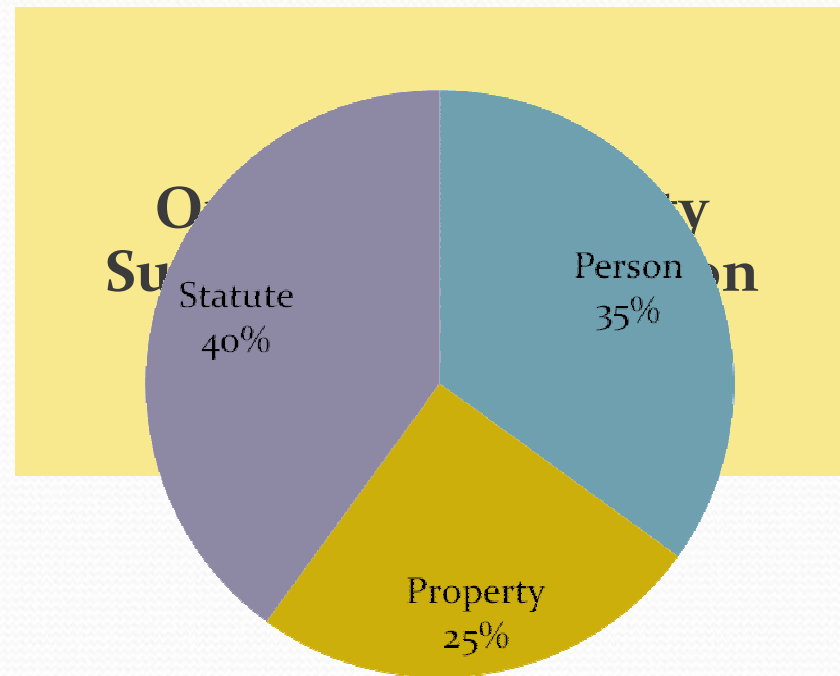
Offender Group Size = 675

Comparison of Crime Types

(July 2011)

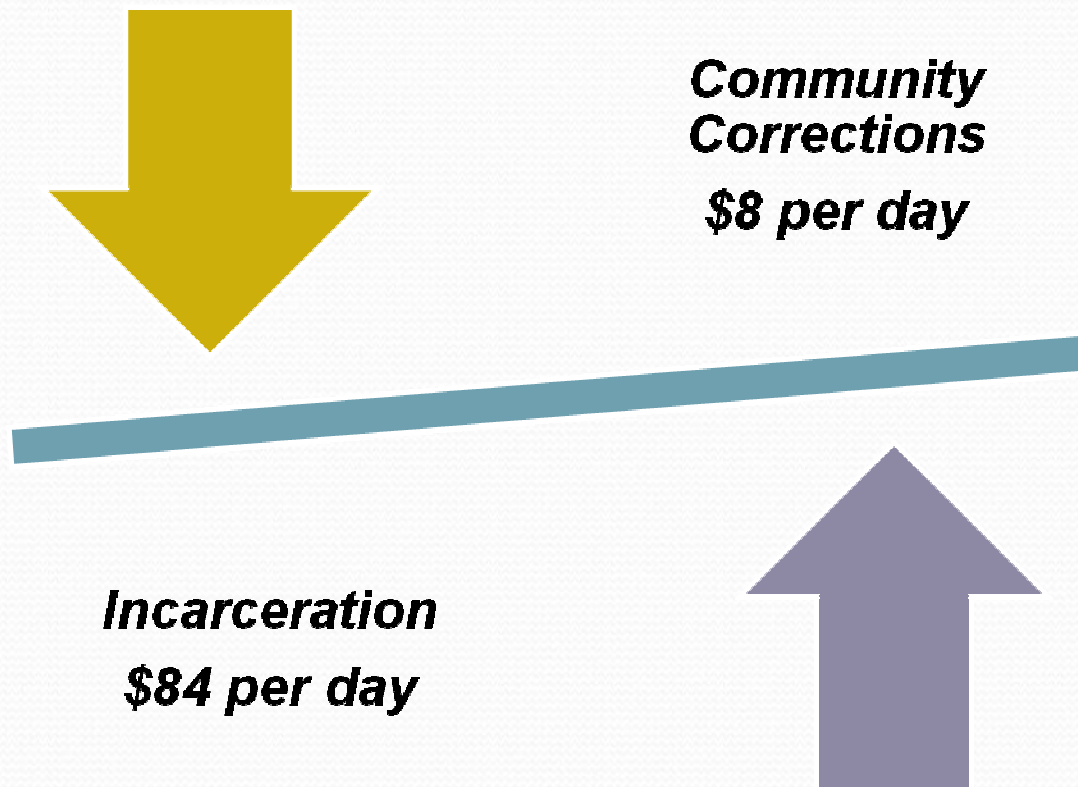


Offender Group Size: 13,987



Offender Group Size = 31,761

Investment in Community Corrections is Good for Oregon Taxpayers



Commission on Public Safety

- a) Transitional
Leave/Earned Time
- b) Community Corrections
Earned Discharge
Recommendations
- c) Structured Sanctions
- d) Supervision Conditions

- Supports Successful Re-entry & Provides Rewards
- Why It Makes Sense for Community Corrections**
- Promotes Focus on Higher Risk Clients
 - Swift & Certain Responses
 - Promotes Connection to Treatment & Programming

What Works in Marion County



Presented by Sheriff Jason Myers
Marion County Sheriff's Office

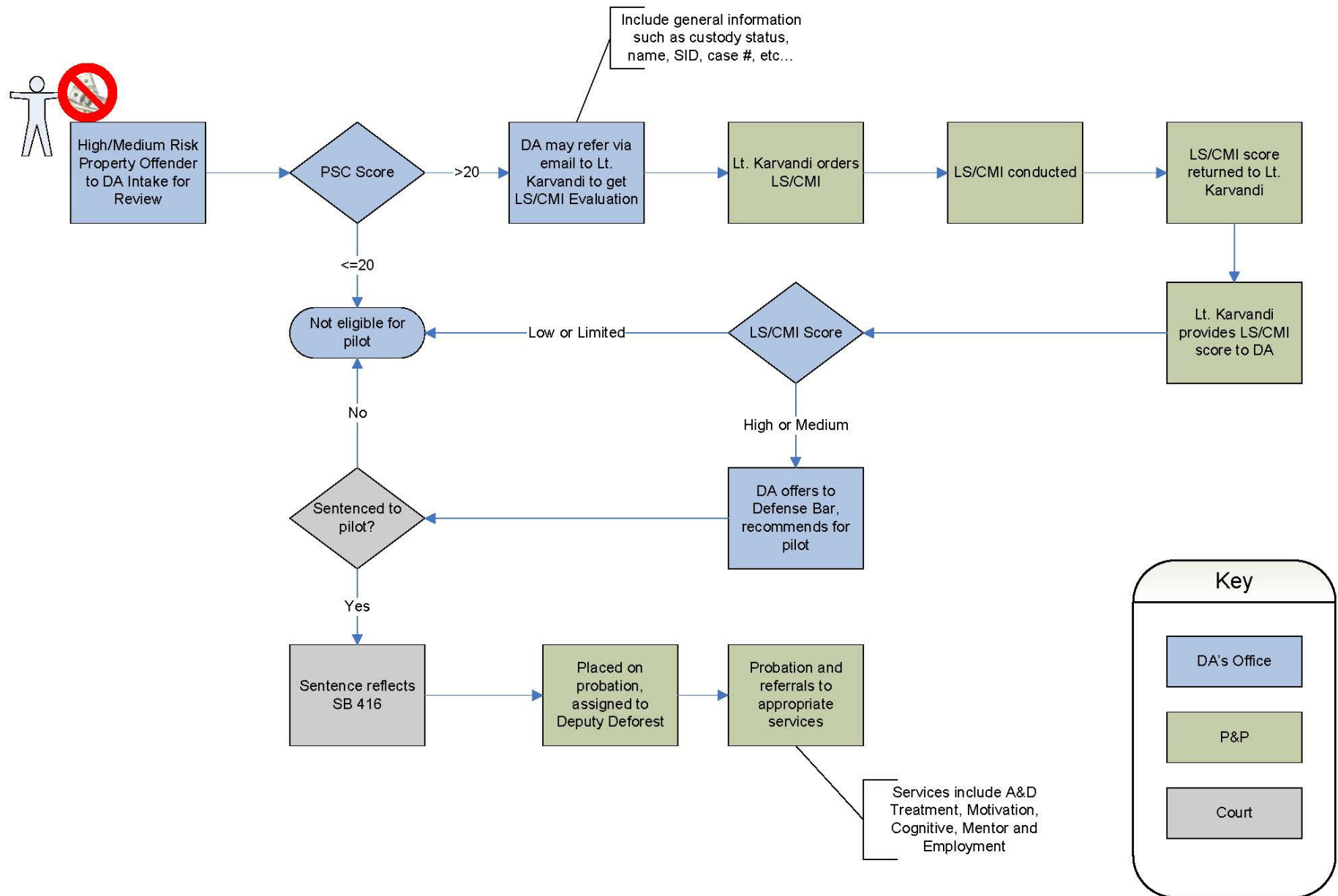
Student Opportunity for Achieving Results (SOAR)

- Collaborative program involving local non-profit agencies, Chemeketa Community College, Marion County Health Department and the Marion County Sheriff's Office
- 90-day drug and alcohol treatment program, located on a community college campus, which includes treatment, mentoring, housing, supervision, and employment elements to address multiple "risk" factors and promote a successful transition for people releasing from prison into Marion County
- As part of the Marion County Reentry Initiative, this program has been evaluated via the Correctional Program Checklist, receiving a score of "very satisfactory"
- To date, SOAR graduates are recidivating at 11.3%. This compares to a "like" risk population recidivism rate of 40%.
- Non-graduate recidivism rate of 20%.
- Employment rates for SOAR graduates currently stand at 60%, which is 20% higher employment rate than the Marion County average.

Senate Bill 416

- Marion County has the second highest incarceration rate in the state of Oregon.
- This concept originated from the 2011 Legislative Session.
- Target non-violent property offenders (M57) who historically would have received a DOC sentence and divert into a comprehensive community supervision program.
- Target population process includes risk, need, and motivation assessments initiated by the District Attorney's Office and concluded by the Parole & Probation Division used by the Court to determine final placement in the program.
- Program coordinates a variety of services to address multiple criminogenic risk factors including prosecution, jail sentence and sanctions, treatment, mentoring, employment and evidence -based supervision practices.
- To date, 37 cases have entered the program, four have been revoked and nine are pending admission. Target total is 50 cases within the FY 2012-2013.
- Funding for this program is provided by the Criminal Justice Commission in the amount of \$500,000 for FY 2012-2013.
- To date, incarceration savings alone are in excess of \$500,000.

Marion County SB 416 Pilot DA Process





Contact Information

Sheriff Jason Myers
Marion County
503-589-3233
jmyers@co.marion.or.us

Marion County Sheriff's Office ♦ 503.588.5094 ♦ 100 High St. NE, Salem ♦ sheriff@co.marion.or.us

"To whom much is entrusted, much is expected."



PROMISING PRACTICE FOR COMMUNITY CORRECTIONS RE-ENTRY

Klamath County Re-entry and Work Release

- ◆ 36 bed minimum security – 24 bed work release
- ◆ Reach-in prior to prison release
- ◆ Transfer to program 180 days to original release date
- ◆ Wrap around services:
 - Assessment and screening
 - Substance abuse treatment
 - Supervised job search
 - Cognitive skill building
 - Transitional skill building
 - Education/vocational services
 - Work release
 - Housing assistance
- ◆ Case management services
- ◆ Work crews

Outcomes of 67 participants exiting program:

- ◆ 83.6% successfully completed program
- ◆ 75% employed or attending college upon release
- ◆ 100% released to safe housing
- ◆ 85.7% remained conviction free

Klamath Comparison

