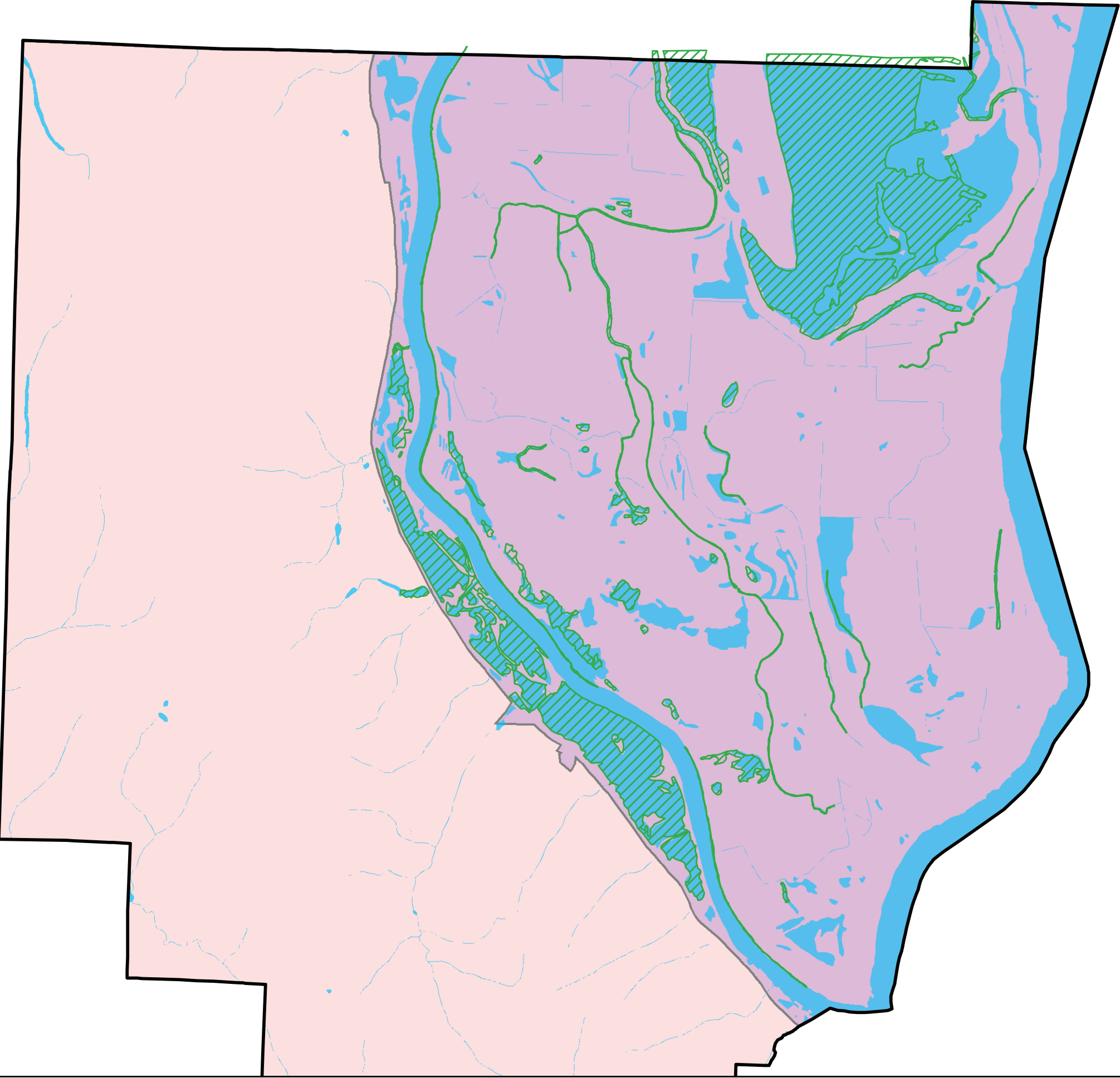


**FIGURE 2. SEC WETLAND -
OREGON EXPLORER
WETLANDS WEST**

Legend

-  Study Area Boundary
-  SEC Wetland
-  Wetlands (OR Explorer)
- Plan Areas**
-  SAUVIE ISLAND
-  WEST HILLS



DRAFT

0 0.25 0.5 1 Miles



Prepared By:
SWCA

Date:
1/27/2015

Coordinate System:
NAD 1983 HARN State Plane Oregon North FIPS 3601

Disclaimer:
This map is intended for informational purposes only. While this map represents the best data available at the time of publication, Multnomah County makes no claims, representations, or warranties as to its accuracy or completeness. Metadata available upon request.