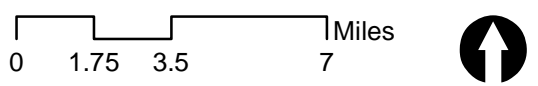
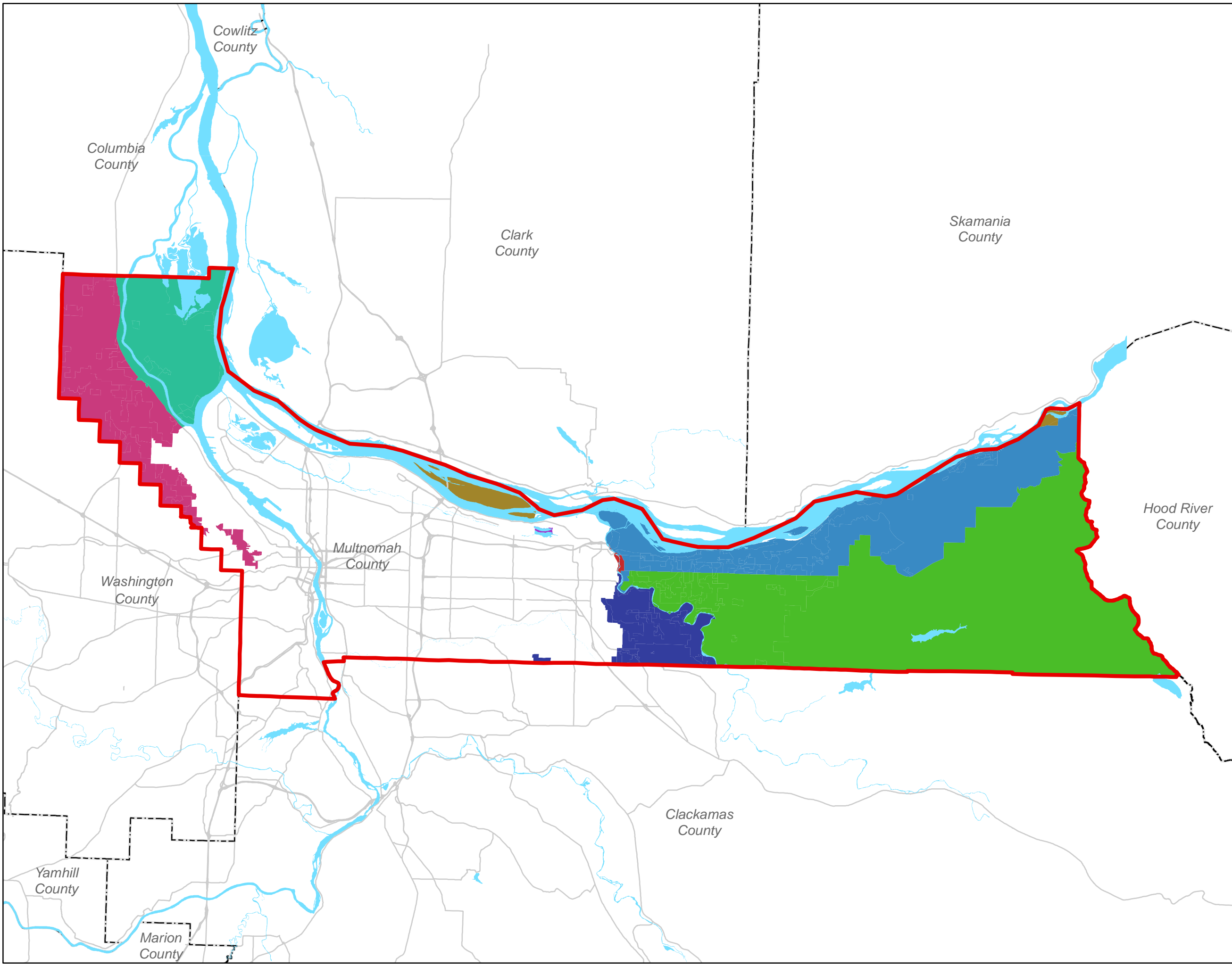




Legend

- Multnomah County
- Major rivers and water bodies
- Rural Planning Areas**
 - COLUMBIA RIVER GORGE NATIONAL SCENIC RURAL
 - COLUMBIA RIVER GORGE NS RURAL / TROUTDALE UPA
 - EAST OF SANDY RURAL AREA
 - INTERLACHEN URBAN
 - MCC 11.15 CODE / PLEASANT VALLEY URBAN
 - SAUVIE ISLAND AND MULTNOMAH CHANNEL RURAL
 - WEST HILLS RURAL
 - WEST OF THE SANDY RIVER RURAL



Prepared By: Multnomah County
Date: 10/24/2014

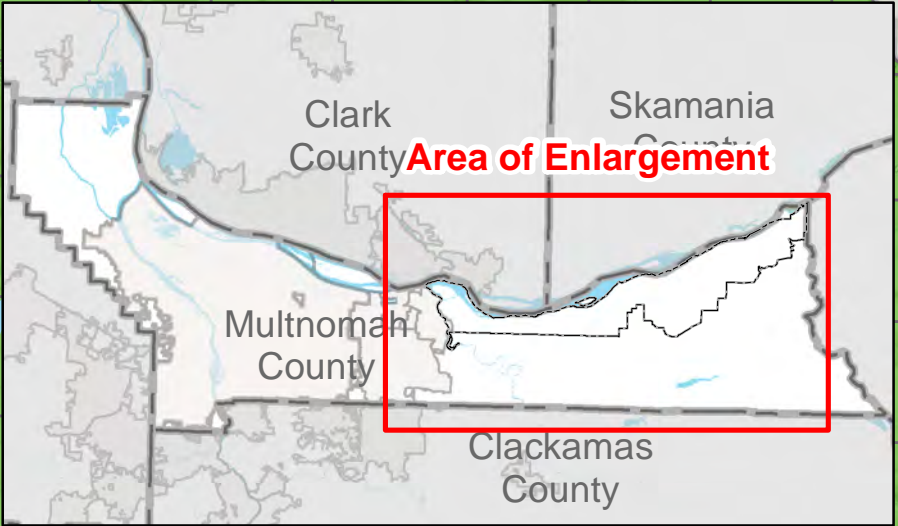
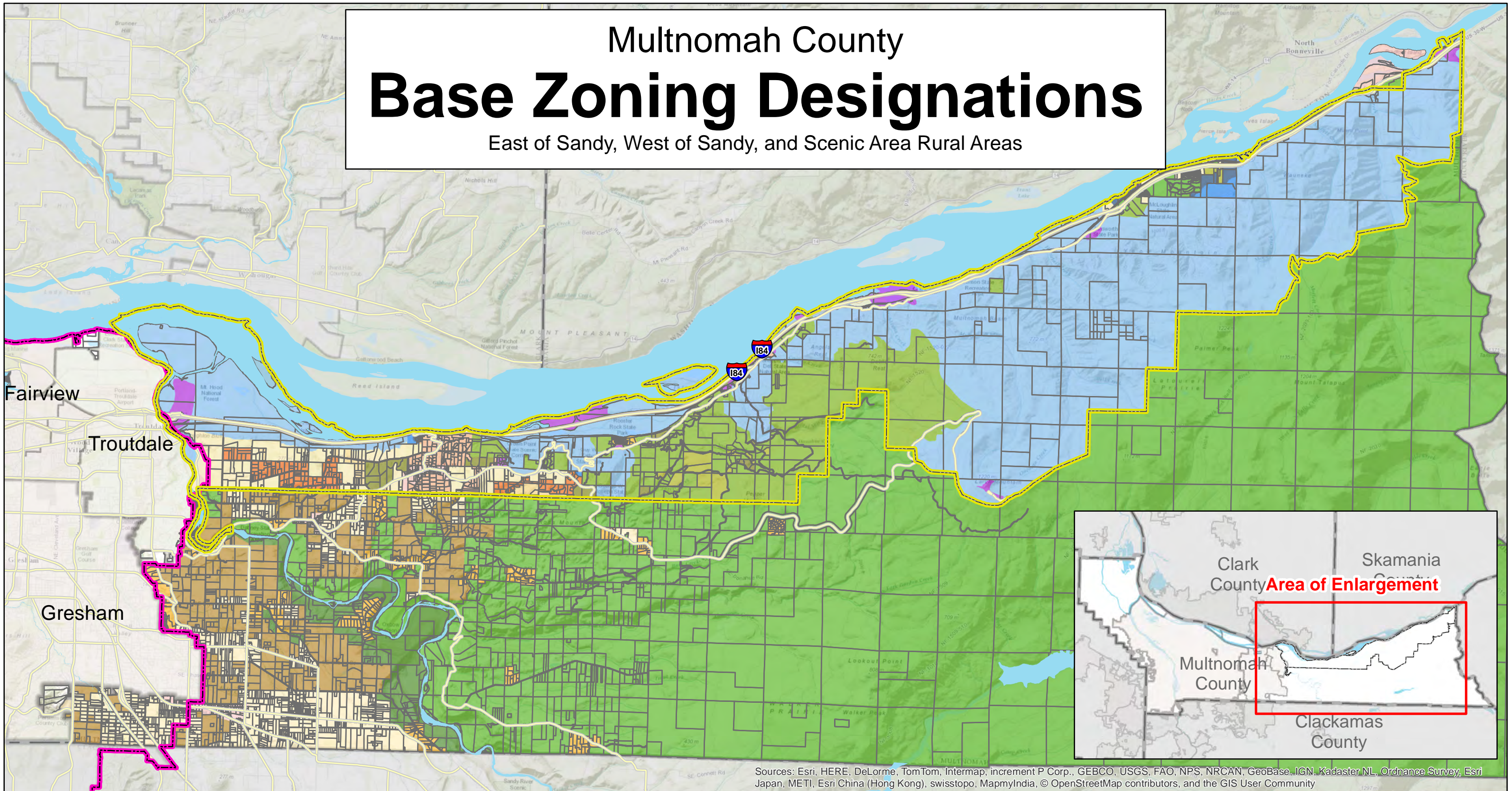
Coordinate System:
NAD 1983 HARN State Plane Oregon North FIPS 3601

Disclaimer:
This map is intended for informational purposes only. While this map represents the best data available at the time of publication, Multnomah County makes no claims, representations, or warranties as to its accuracy or completeness. Metadata available upon request.

Multnomah County

Base Zoning Designations

East of Sandy, West of Sandy, and Scenic Area Rural Areas



Sources: Esri, HERE, DeLorme, TomTom, Intermap, increment P Corp., GEBCO, USGS, FAO, NPS, NRCAN, GeoBase, IGN, Kadaster NL, Ordnance Survey, Esri Japan, METI, Esri China (Hong Kong), swisstopo, MapmyIndia, © OpenStreetMap contributors, and the GIS User Community

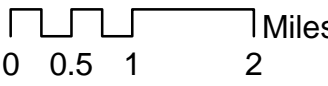
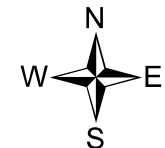
Zoning Designation

CFU	MUA-20
CFU3	RC
CFU4	RR
EFU	

Columbia Gorge National Scenic Area Zoning

GGF20	GGA20	GGR10	GGPR	GGO
GGF40	GGA40	GGR5	GGCR	
GGF80	GSA40	GGR2	GSPR	
GSF40	GGRC	GSR	GSO	

County Boundaries	Taxlot Boundaries
National Scenic Area	Arterial
Urban Grown Boundary	River/Lake

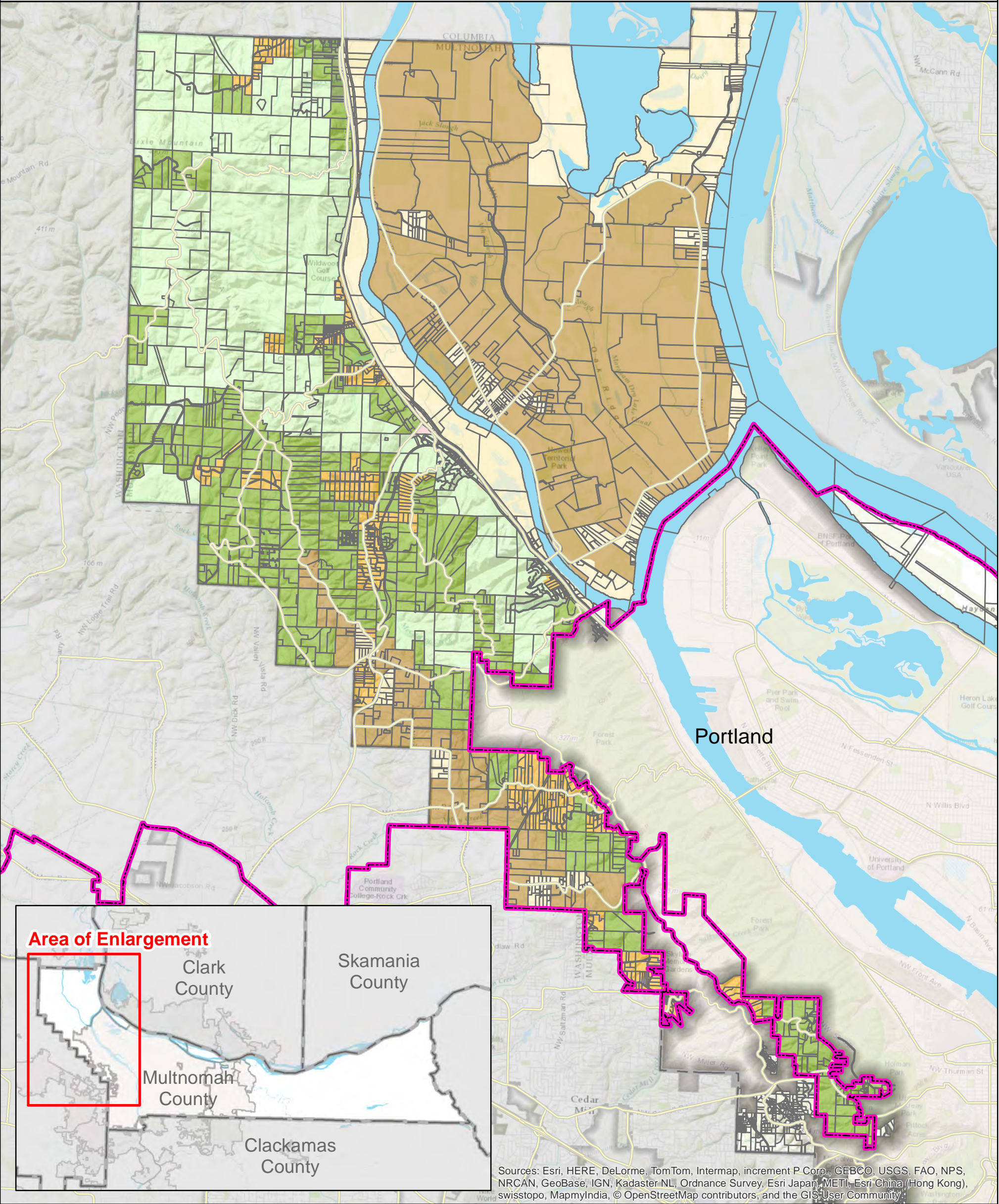


DISCLAIMER: This map is provided for informational purposes only. Information used to develop this map have been obtained from many sources and is not guaranteed to be accurate. Multnomah County assumes no responsibility for the accuracy of information appearing on this map.

Multnomah County



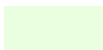
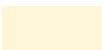




Base Zoning Designations






West Hills and Sauvie Island/Multnomah Channel Rural Plan Areas

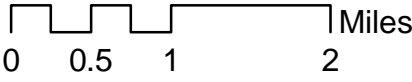
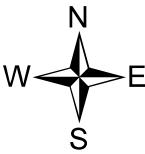


Sources: Esri, HERE, DeLorme, TomTom, Intermap, increment P Corp., GEBCO, USGS, FAO, NPS, NRCAN, GeoBase, IGN, Kadaster NL, Ordnance Survey, Esri Japan, METI, Esri China (Hong Kong), swisstopo, MapmyIndia, © OpenStreetMap contributors, and the GIS User Community

Zoning Designation

	CFU		EFU
	CFU1		MUA-20
	CFU2		RC
	CFU5		RR

	Urban Grown Boundary
	Taxlot Boundaries
	County Boundaries
	Arterial
	River/Lake



DISCLAIMER: This map is provided for informational purposes only. Information used to develop this map has been obtained from many sources and is not guaranteed to be accurate. Multnomah County assumes no responsibility for the accuracy of information appearing on this map.