



# MULTNOMAH COUNTY

## Central Courthouse

Board Briefing

February 2016

Clifton Serres, PE,  
JD Deschamps, PE,  
Multnomah County  
Steve Simpson, AIA  
SRG Partnership

# PURPOSE OF BRIEFING

- Architectural Design Concepts



# PROJECT VISION

- ***Vision Statement:*** *The new Multnomah County Central Courthouse will enhance confidence in the justice system, inspire civic engagement and urban vitality, and provide a restorative human experience within a resilient and responsible community landmark.*





MULTNOMAH COUNTY CENTRAL COURTHOUSE | FEBRUARY 2016



- ☐ Site
- ☐ Building Massing
- ☐ Entry Sequence
- ☐ Elevations - Precedents, Material and Studies
- ☐ Questions

■ Site

□ Building Massing

□ Entry Sequence

□ Elevations - Precedents, Material and Studies

□ Questions



Aerial Site Photo

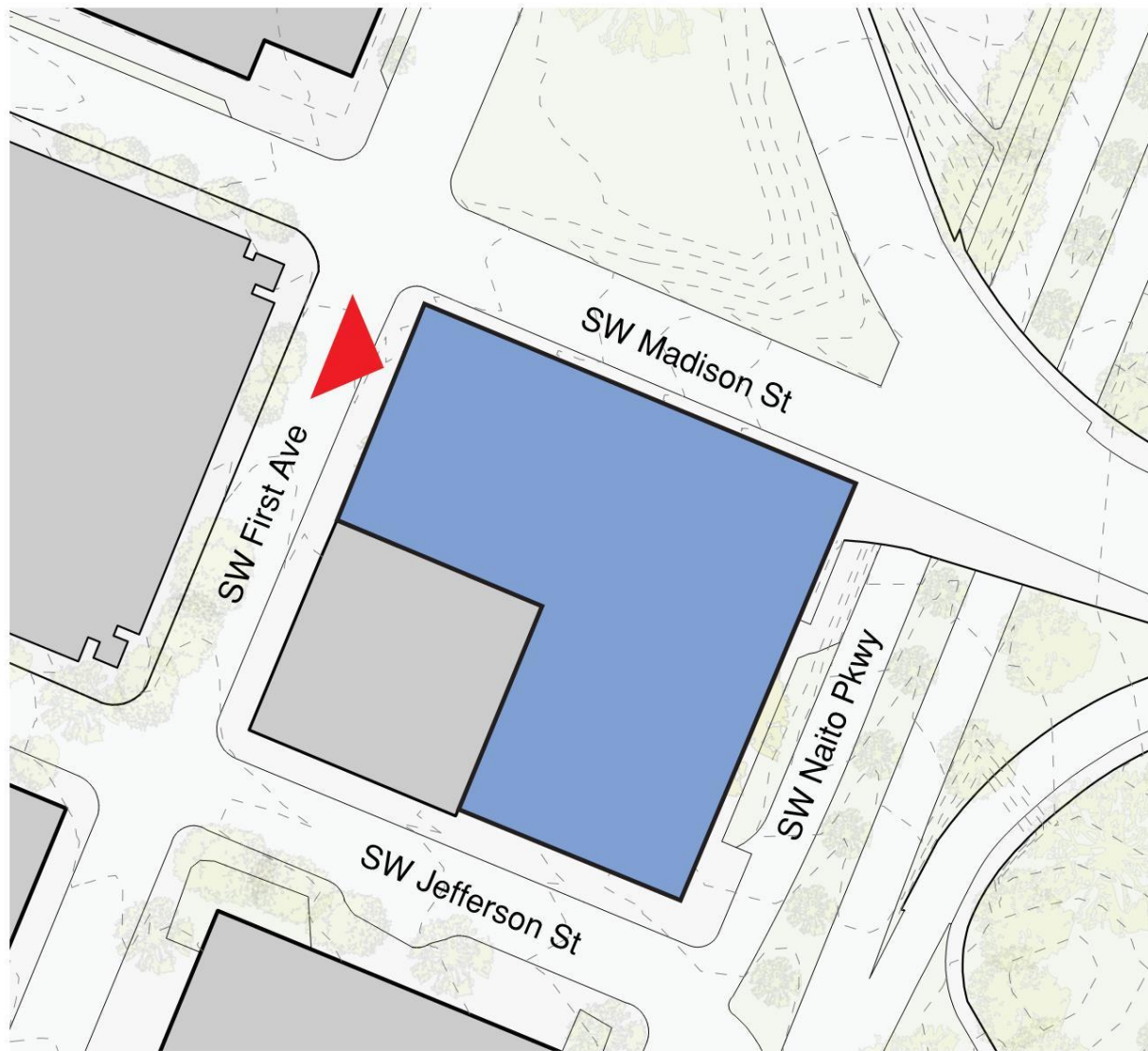
Multnomah County Central Courthouse







Downtown



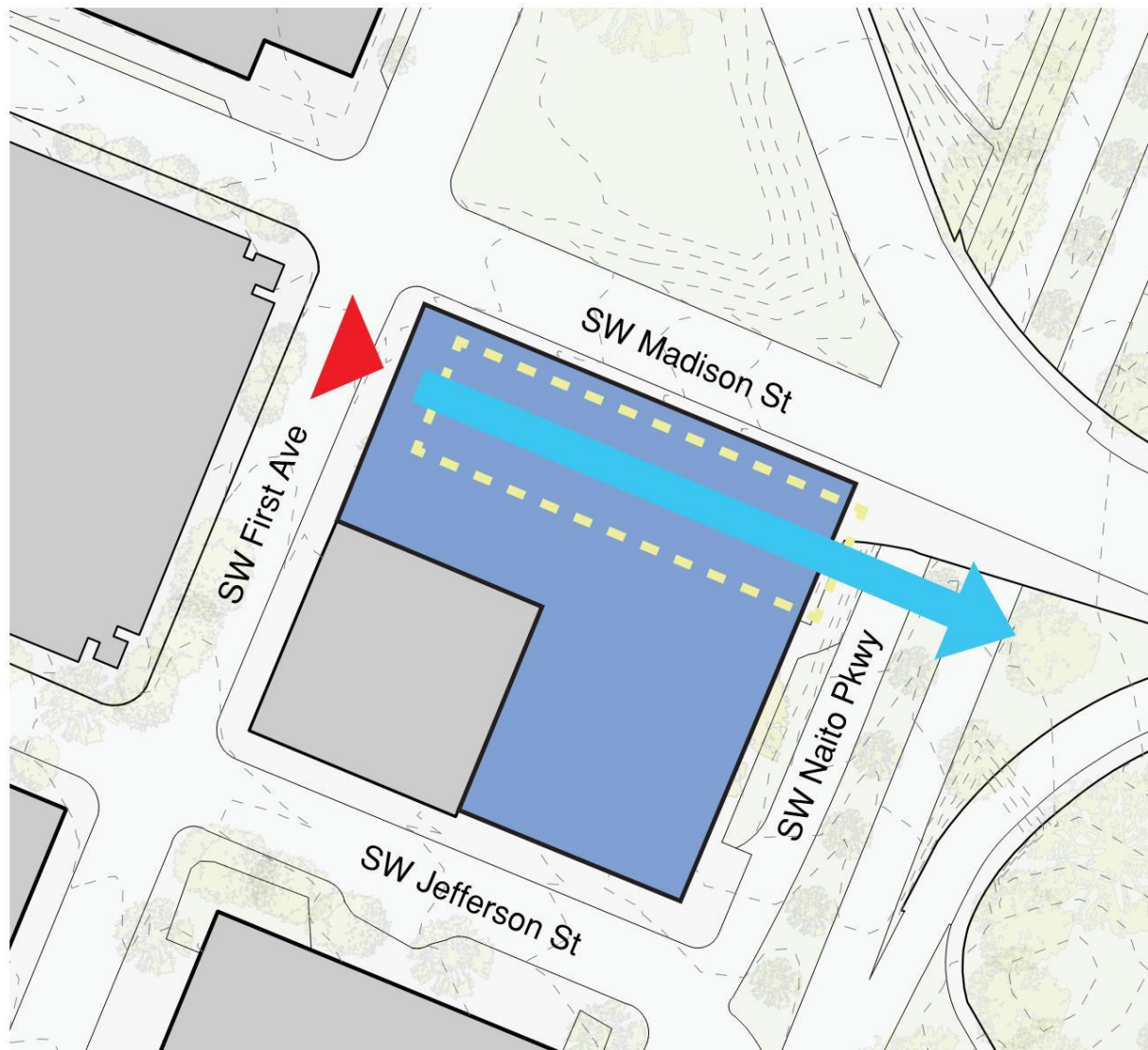
Site Opportunities

Multnomah County Central Courthouse



SRG PARTNERSHIP INC | CGLRICCI GREENE





Site Opportunities

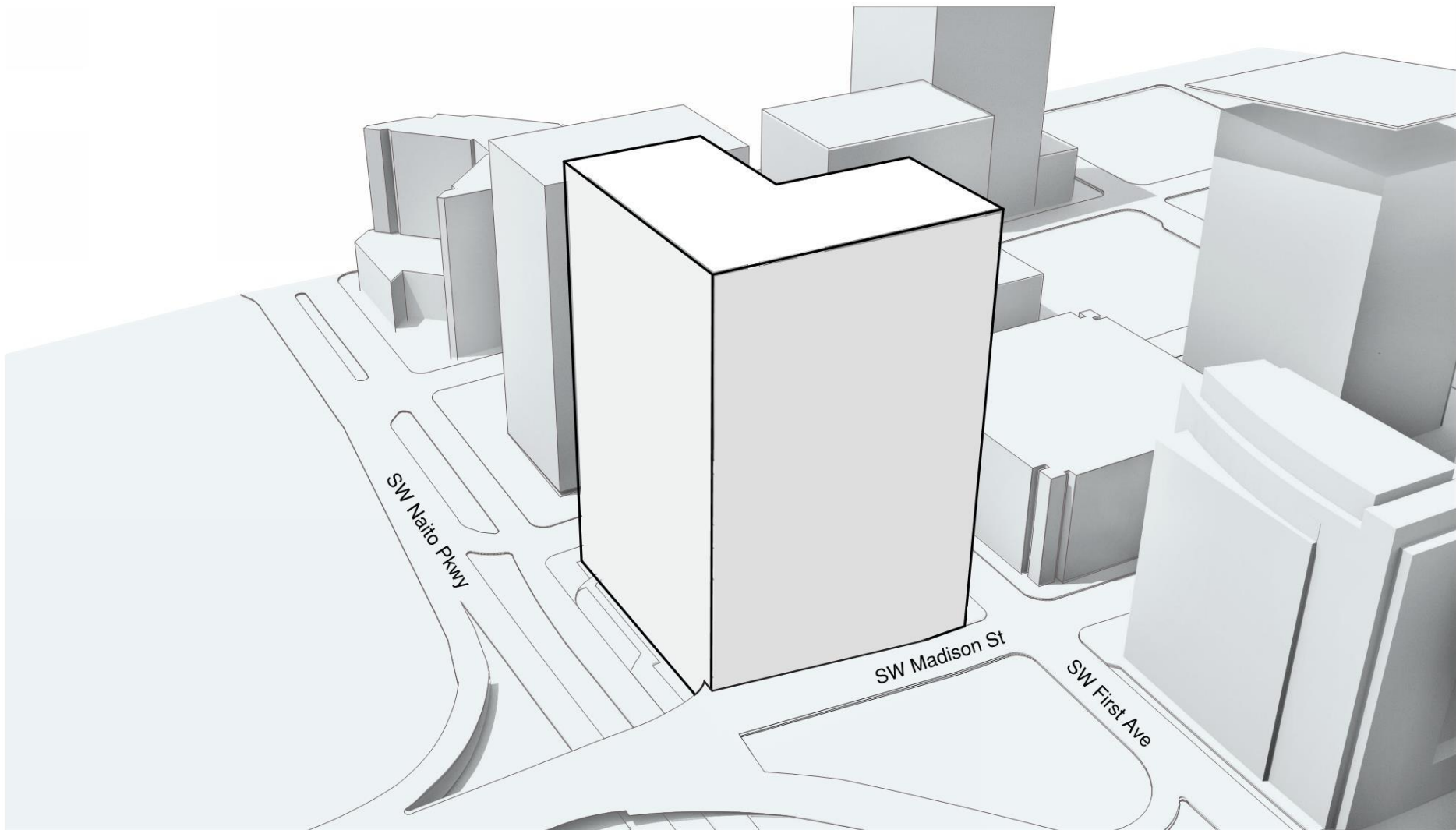
Multnomah County Central Courthouse



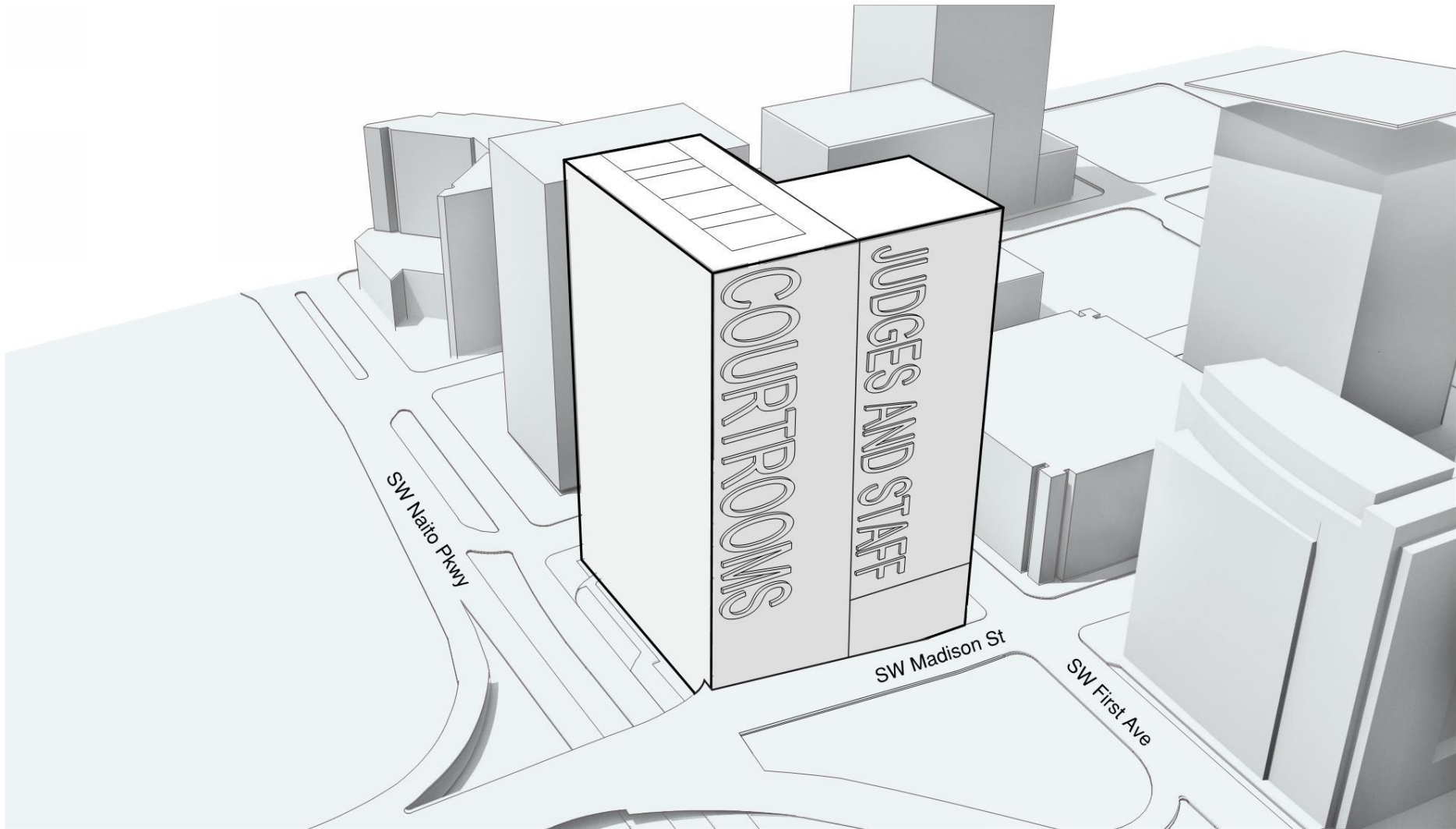
SRG PARTNERSHIP INC | CGLRICCI GREENE



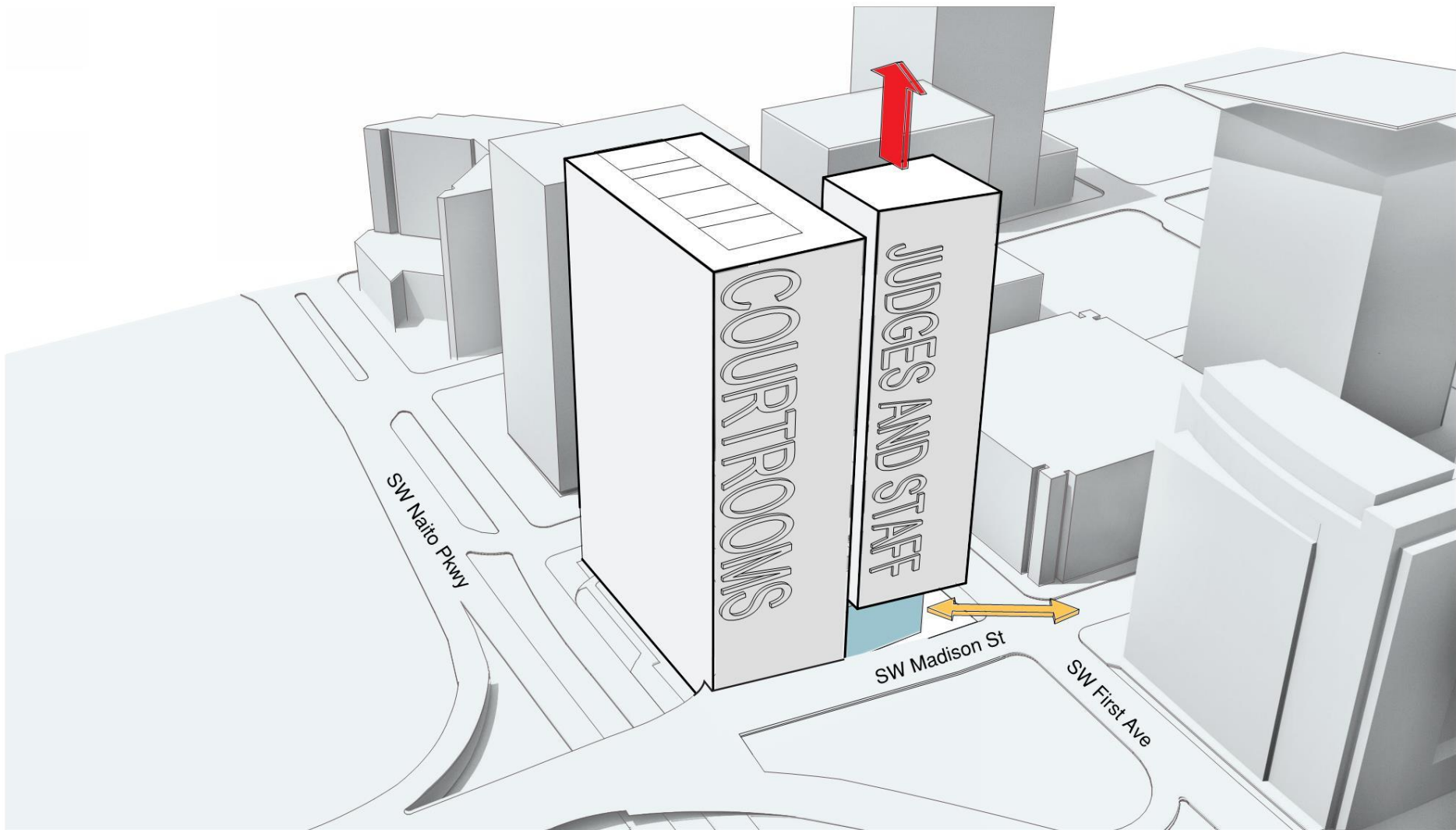
- ☐ Site
- ☒ Building Massing
- ☐ Entry Sequence
- ☐ Elevations - Precedents, Material and Studies
- ☐ Questions



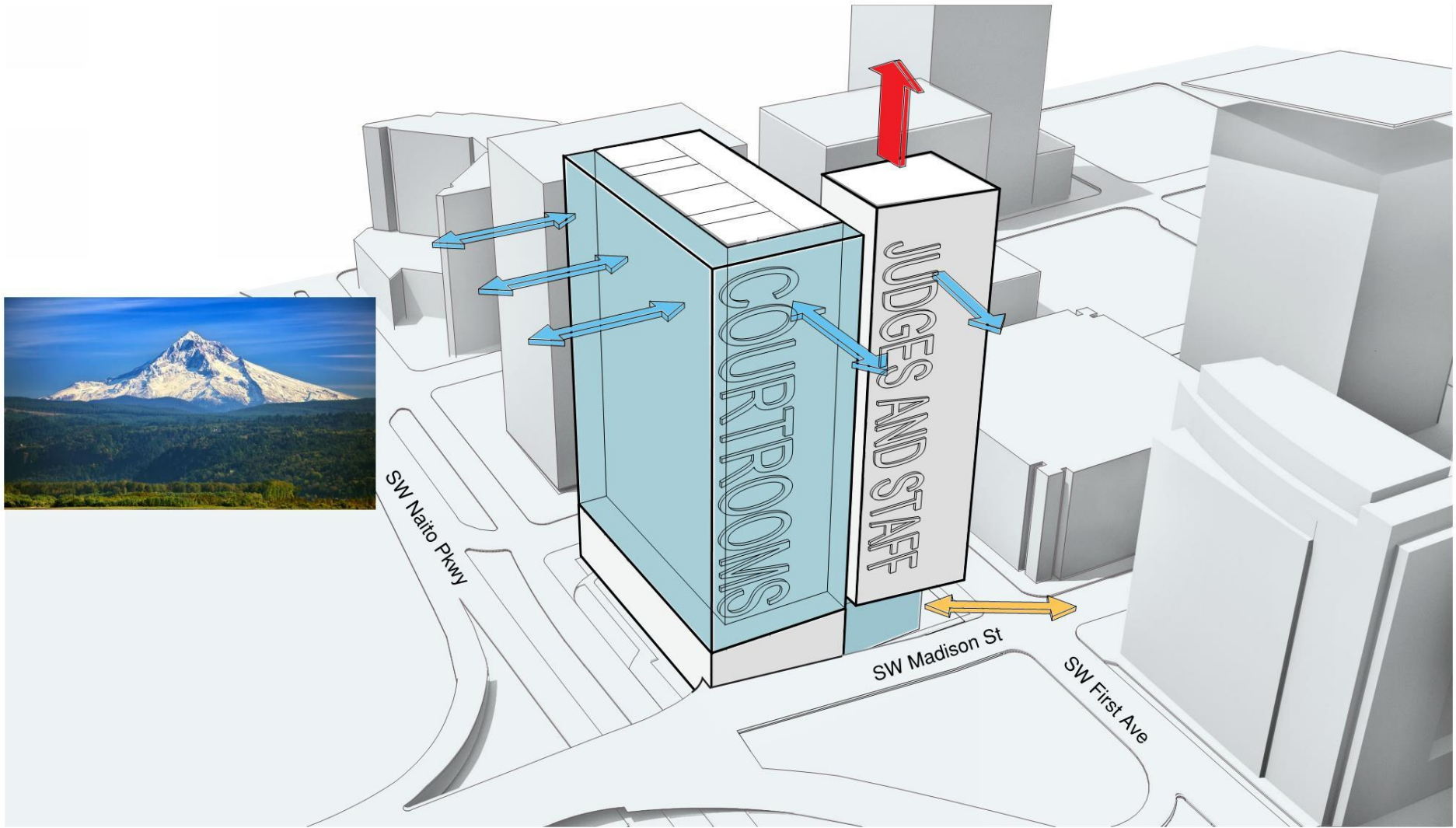
Basic Massing



Basic Massing

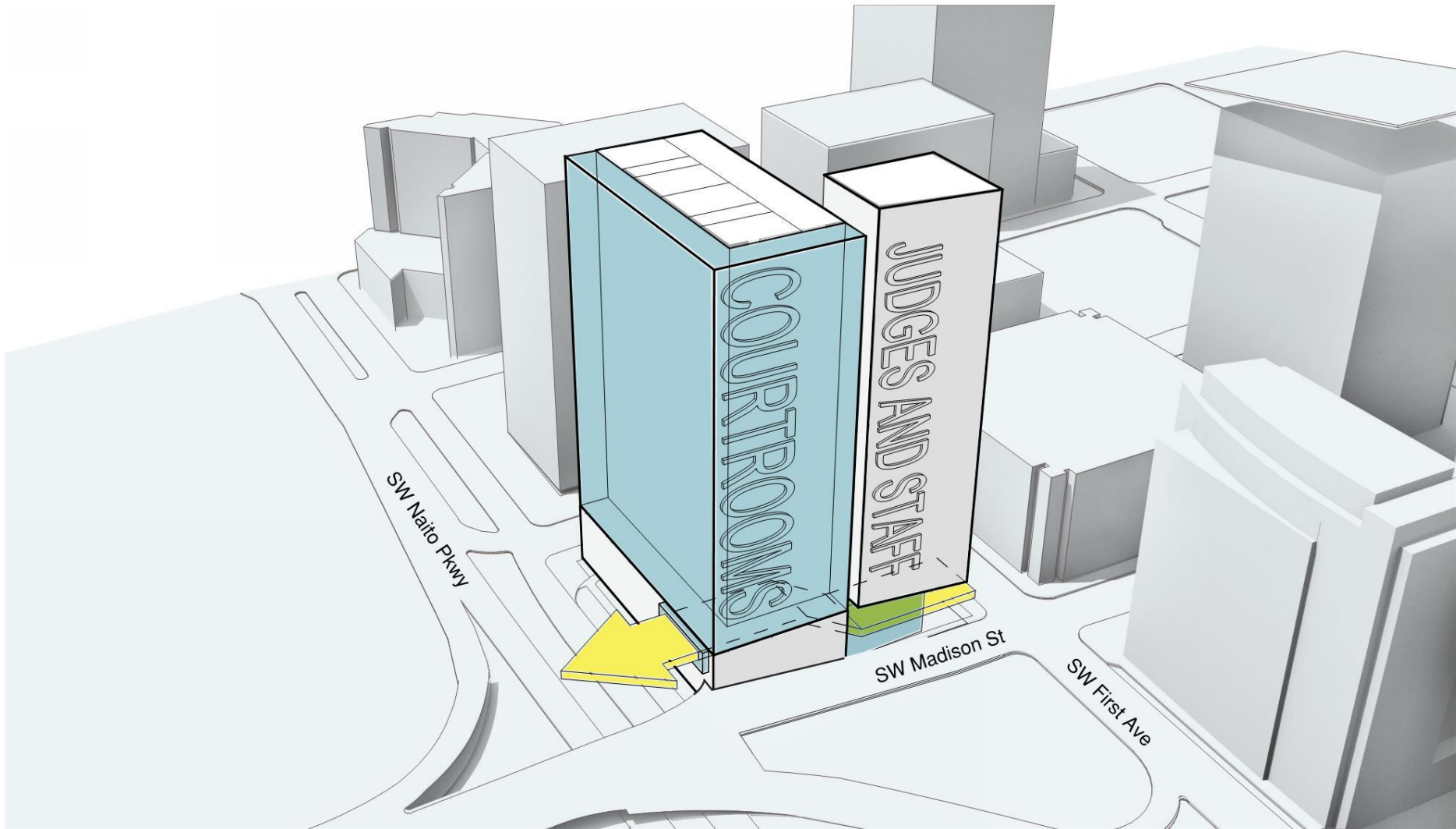


Responding to Urban Fabric



Views to River, Cascades and Region





Public Procession

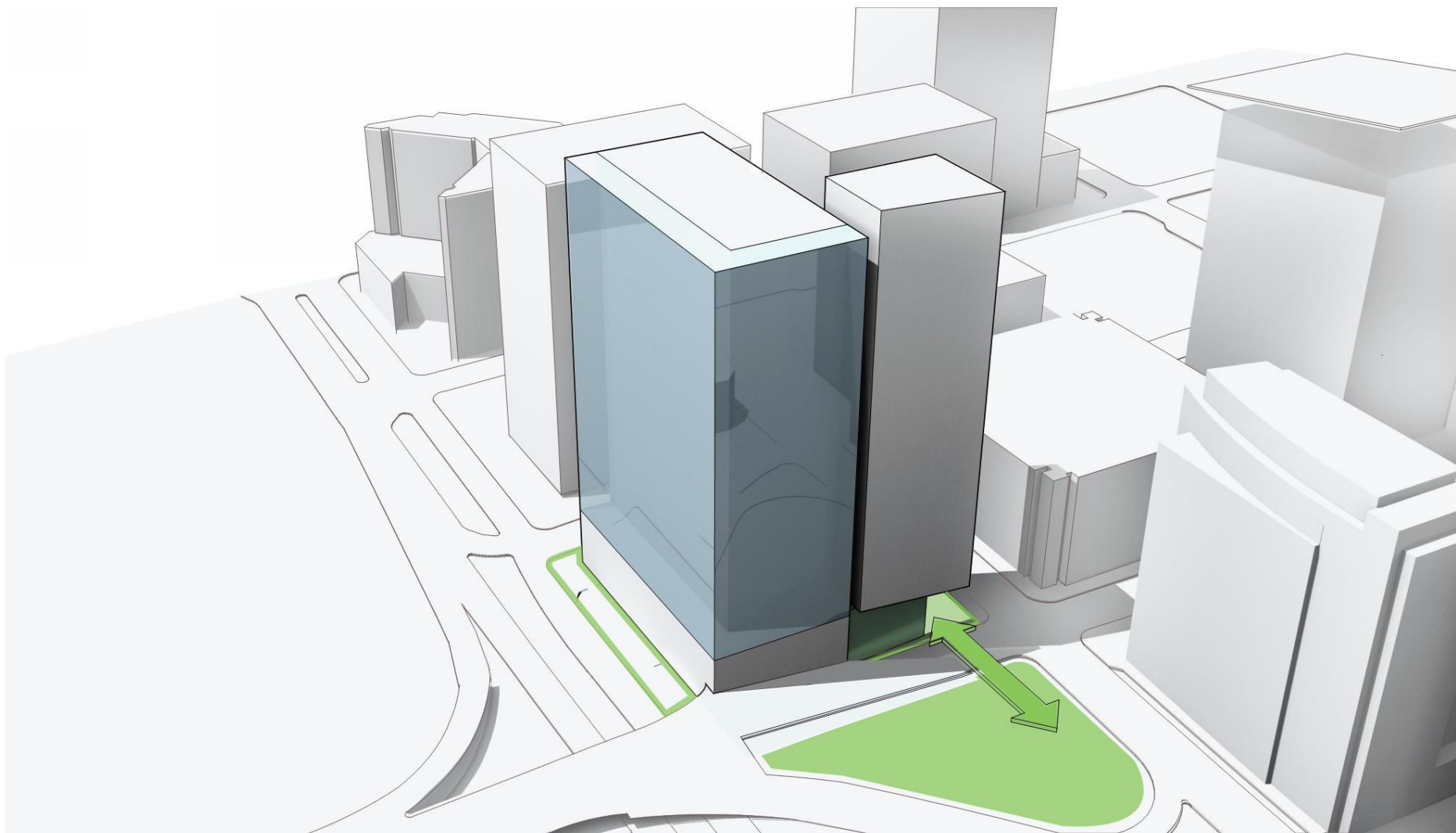




Potential View from New Building



Existing Jury Assembly

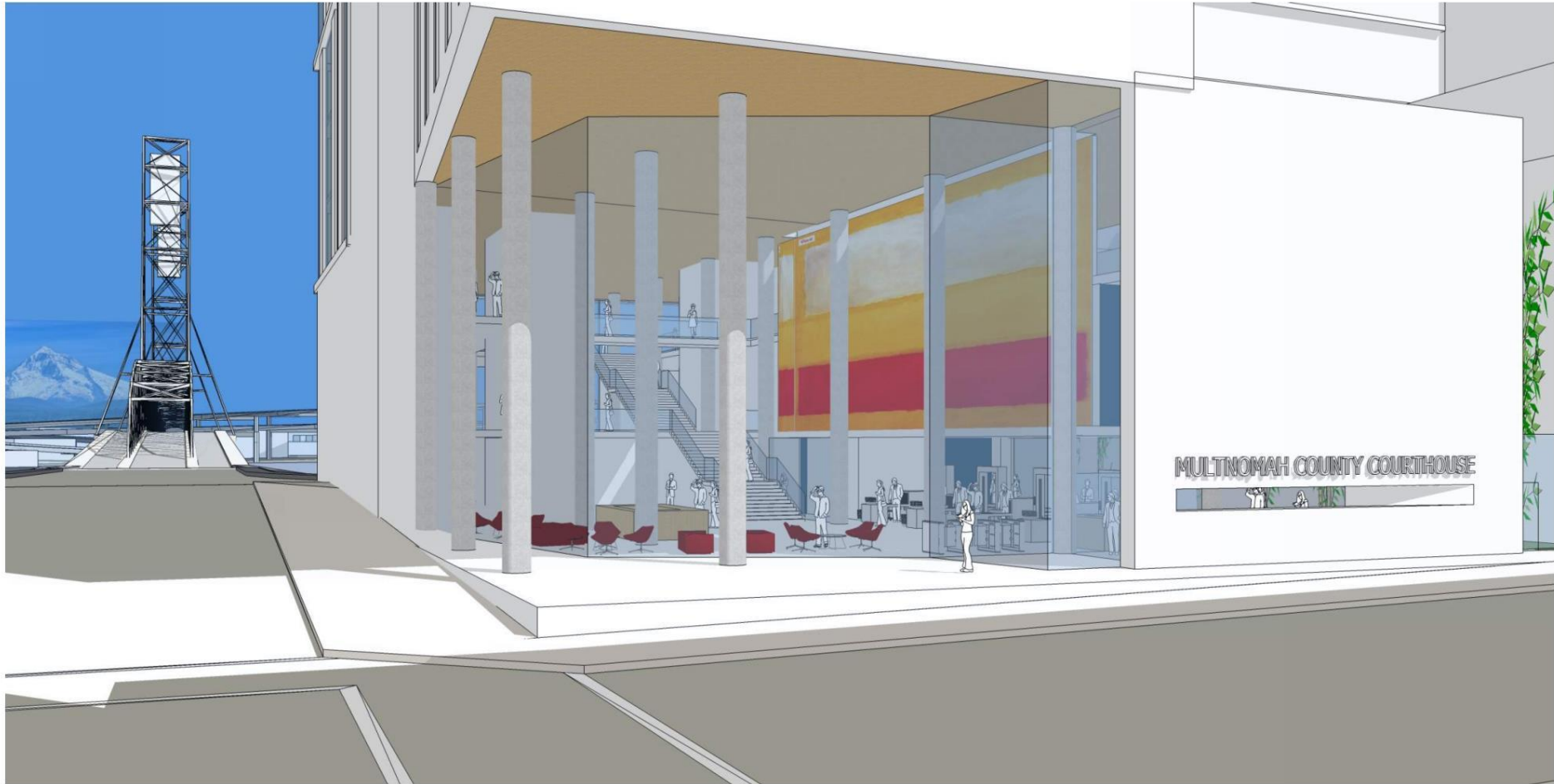


Potential Green/Hardscape Spaces

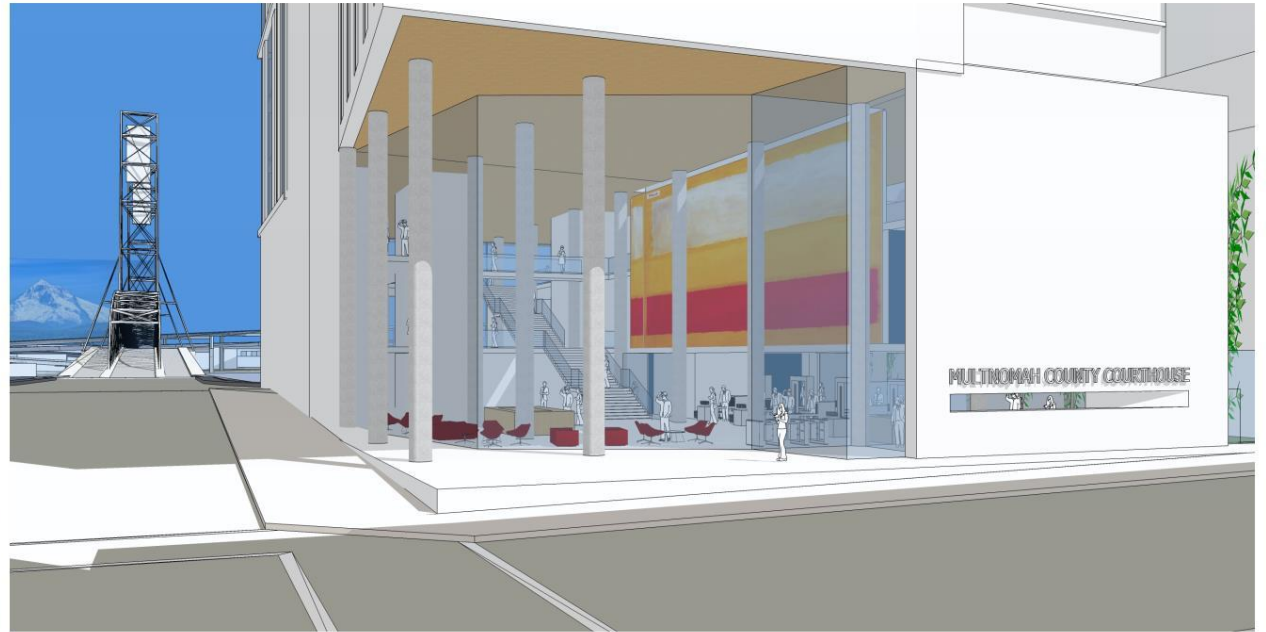


- ☐ Site
- ☐ Building Massing
- ☒ Entry Sequence
- ☐ Elevations - Precedents, Material and Studies
- ☐ Questions





Lobby



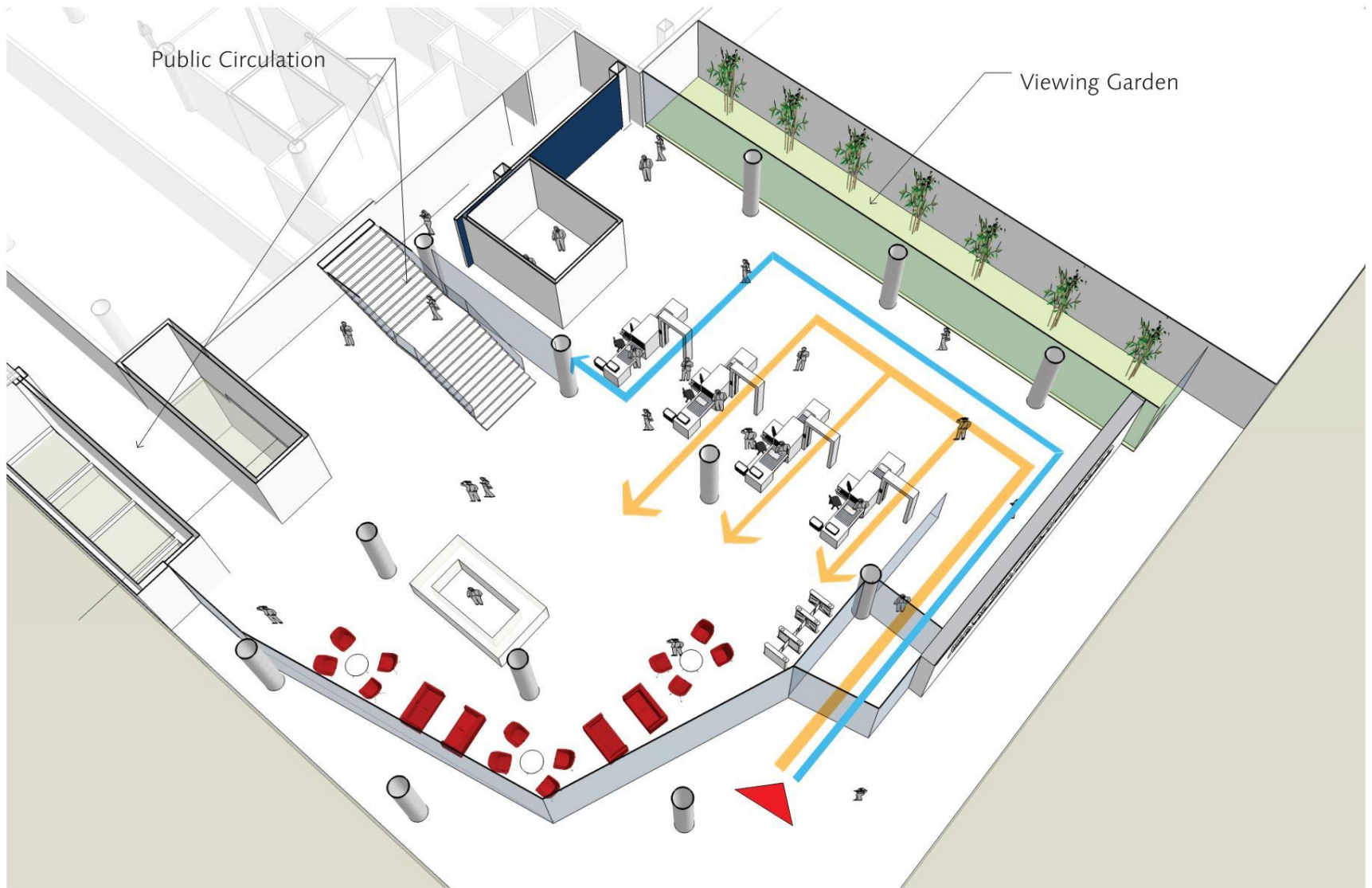
Lobby Transparency Precedents

Multnomah County Central Courthouse



SRG PARTNERSHIP INC | CGLRICCI GREENE



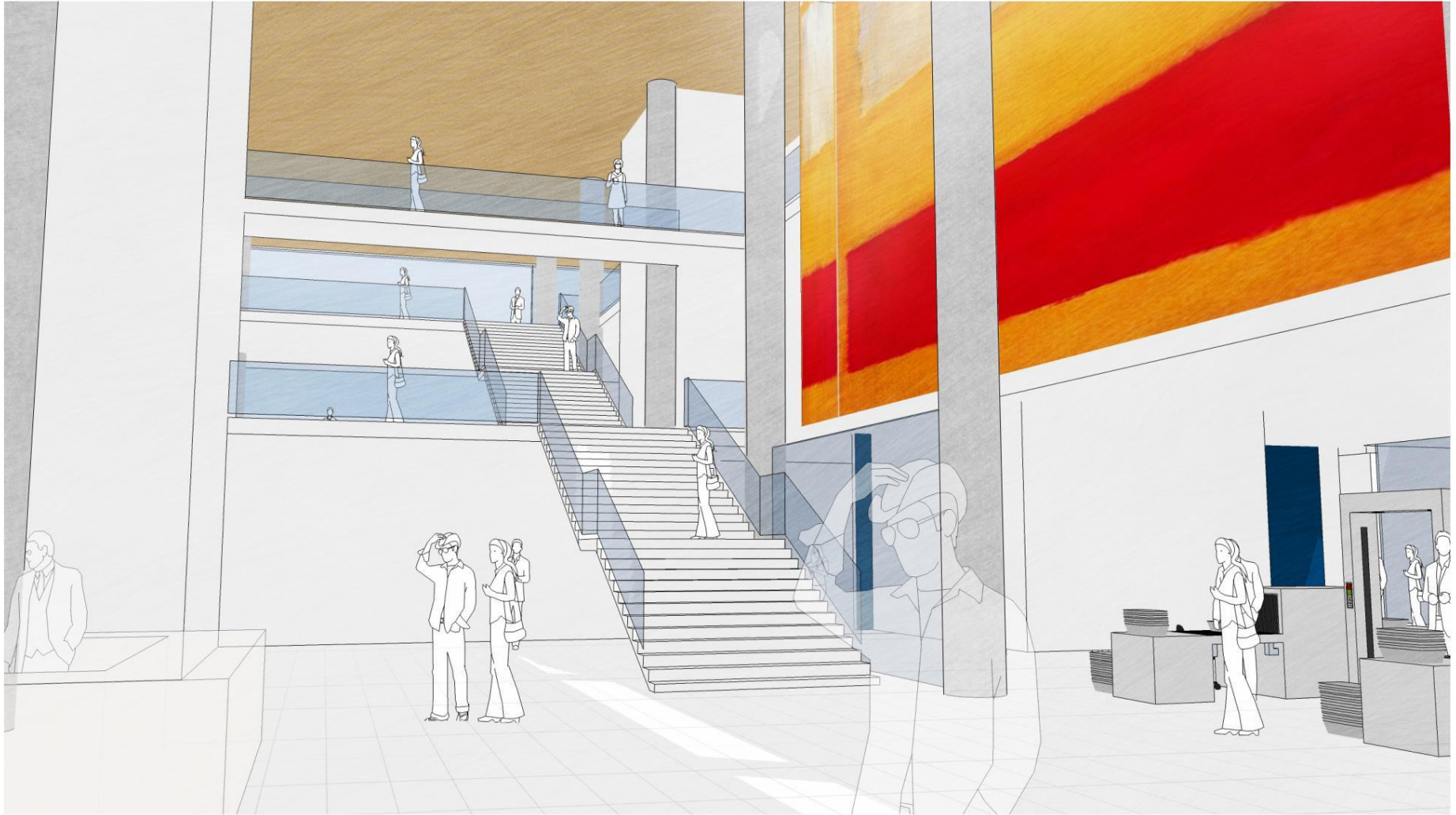


Entry Sequence Diagram

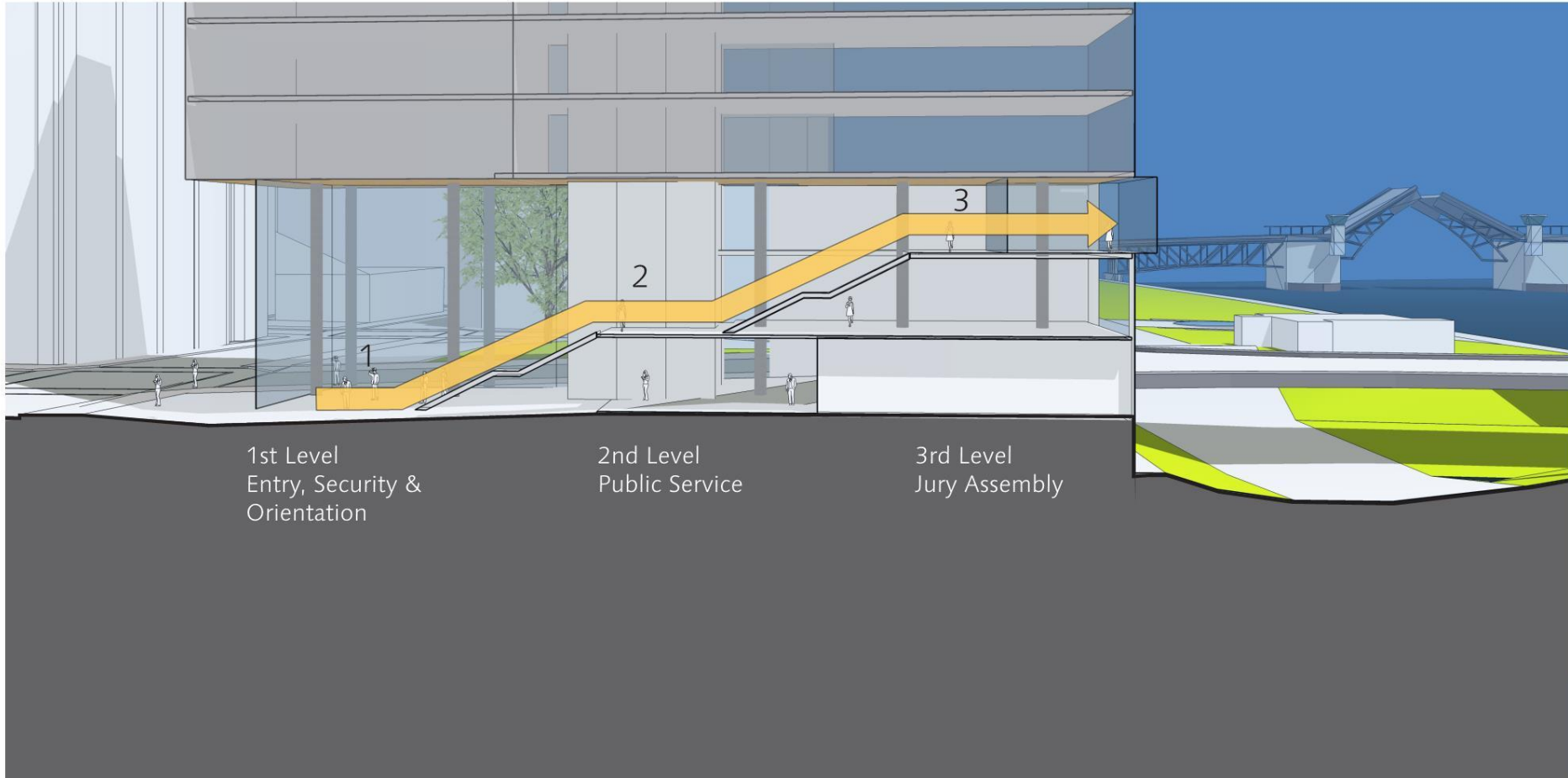
Multnomah County Central Courthouse



SRG PARTNERSHIP INC | CGLRICCI GREENE



Lobby Perspective Study



1st Level  
Entry, Security &  
Orientation

2nd Level  
Public Service

3rd Level  
Jury Assembly

Section through Lobby looking North

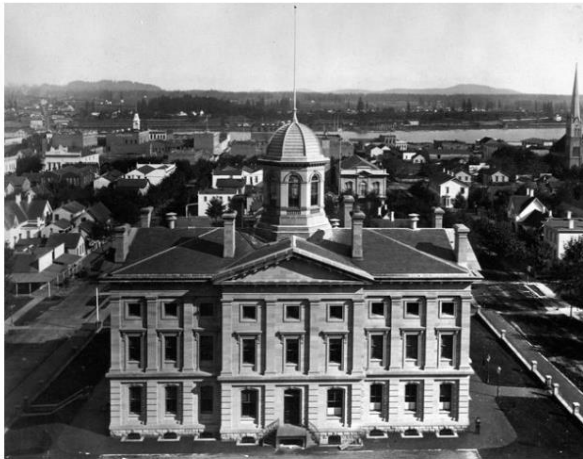




Lobby Perspective



- ☐ Site
- ☐ Building Massing
- ☐ Entry Sequence
- ☒ Elevations - Precedents, Material and Studies
- ☐ Questions



Local Precedents | A History of Light Stone

Multnomah County Central Courthouse



SRG PARTNERSHIP INC | CGLRICCI GREENE





Modern Limestone Precedents

Multnomah County Central Courthouse



SRG PARTNERSHIP INC | CGLRICCI GREENE



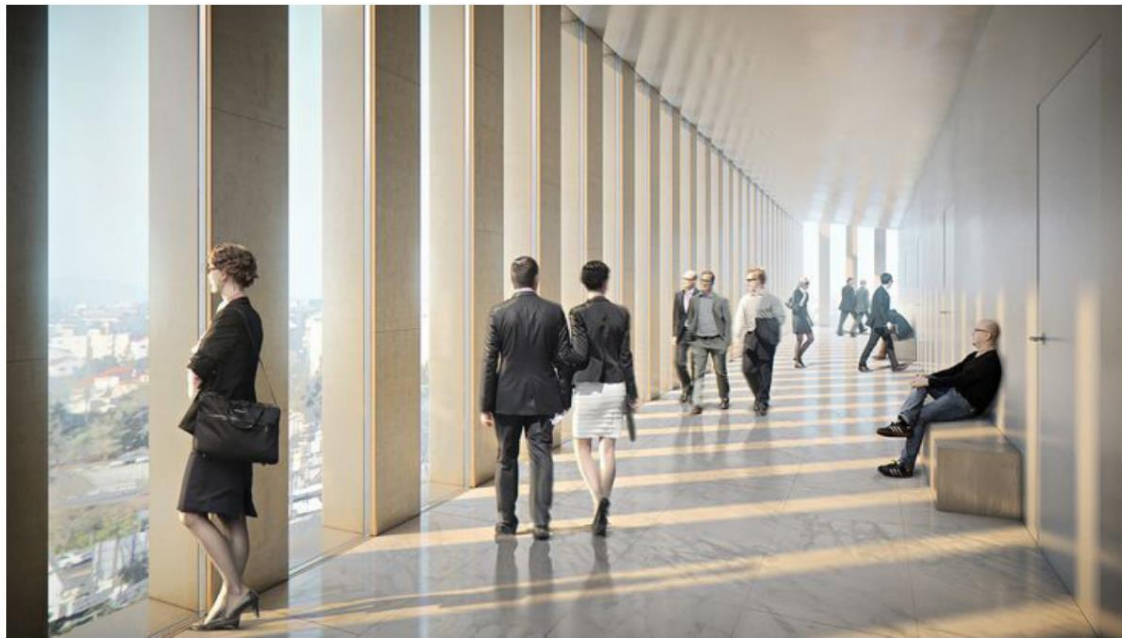
East Elevation | Curtain Wall Precedents

Multnomah County Central Courthouse

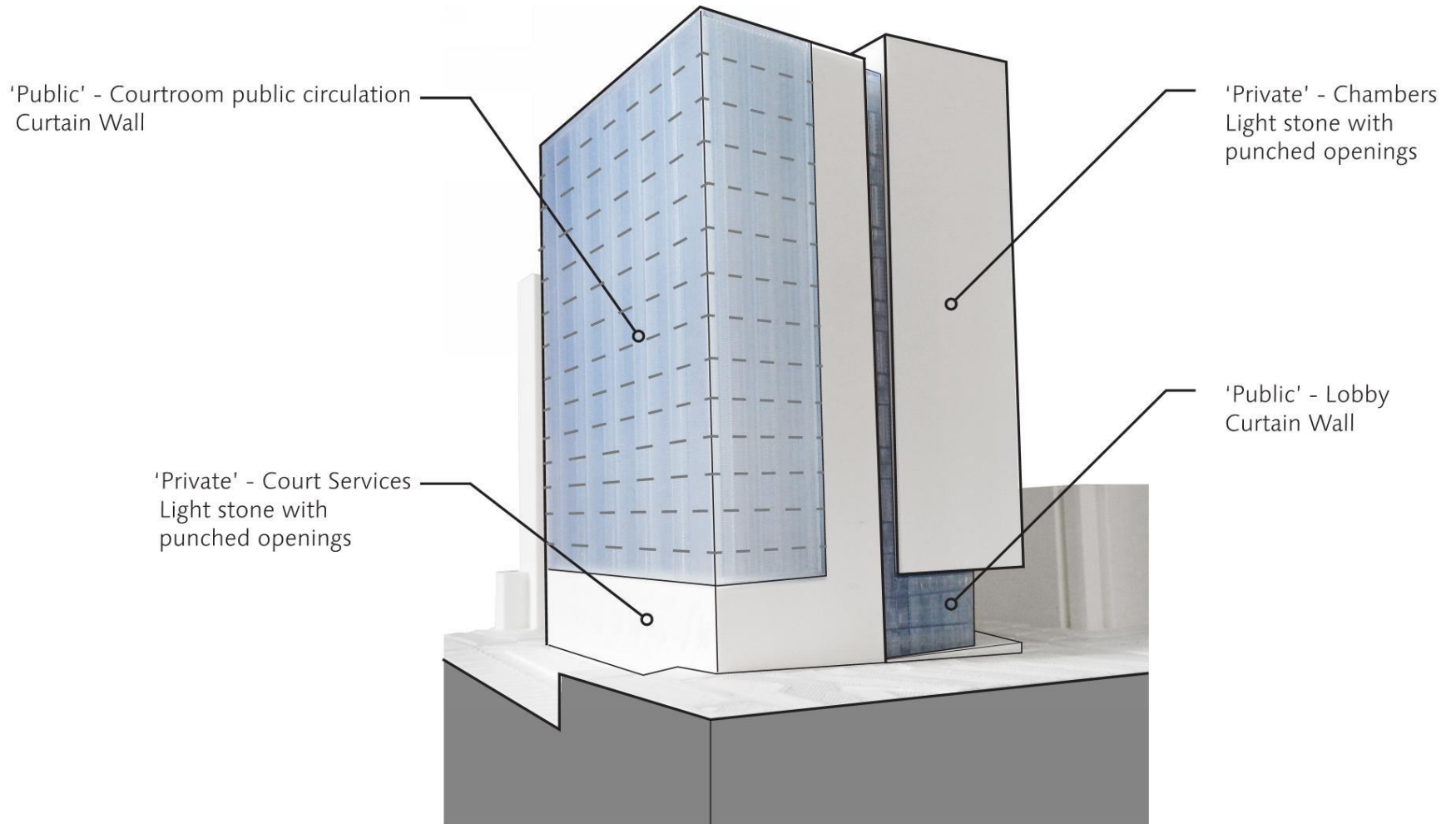


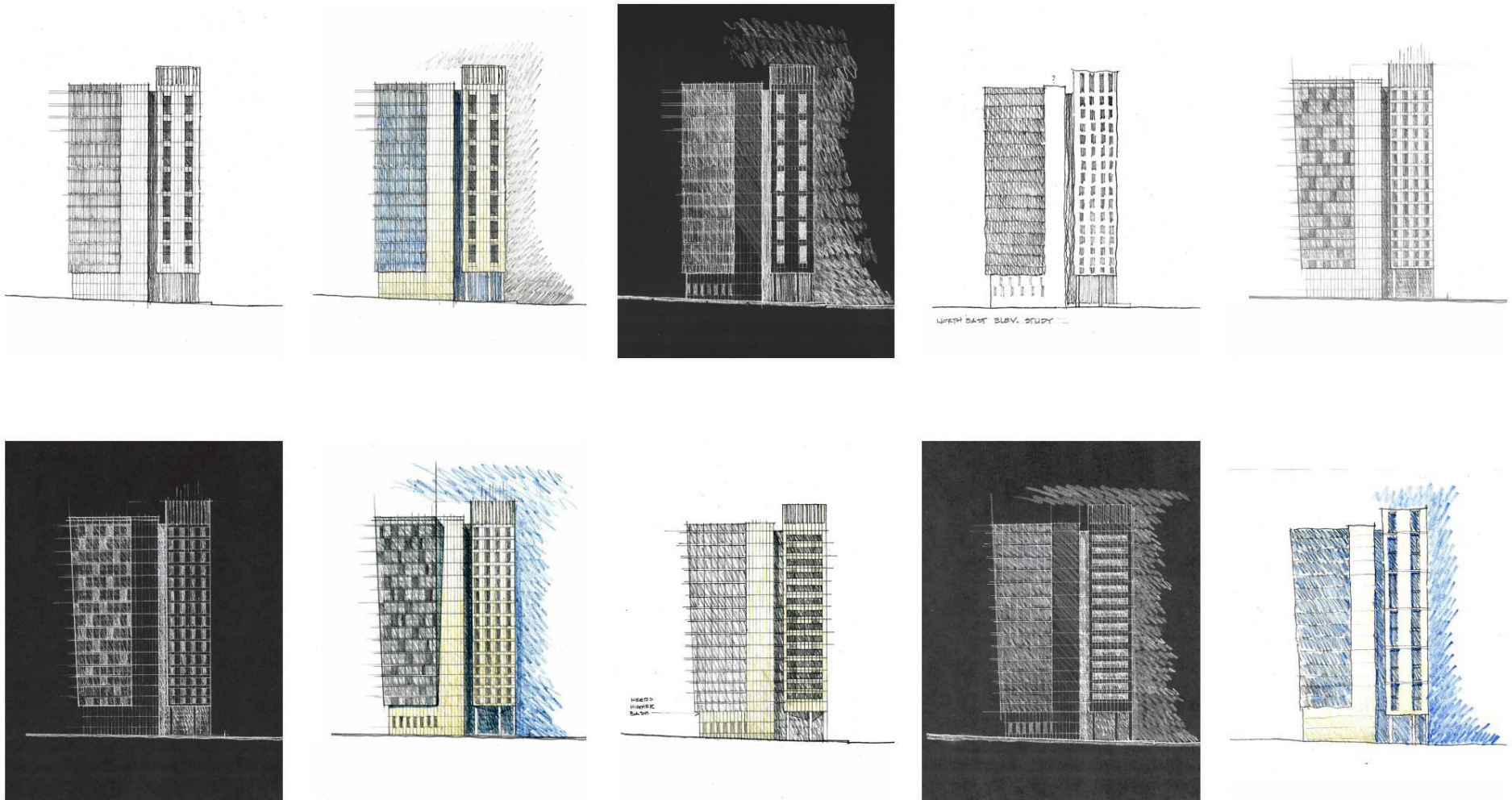
SRG PARTNERSHIP INC | CGLRICCI GREENE





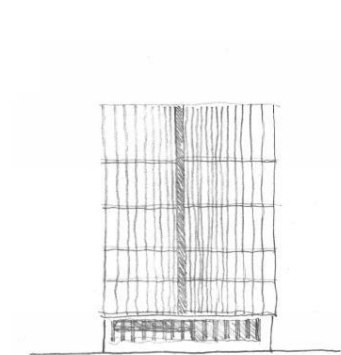
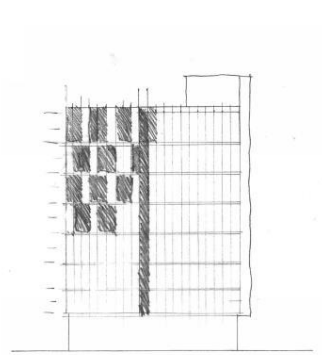
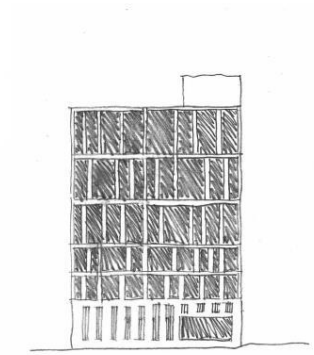
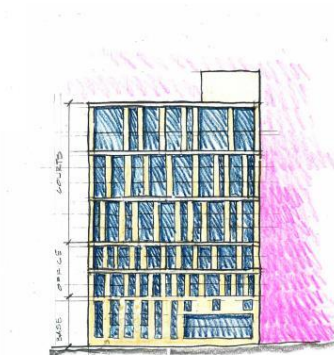
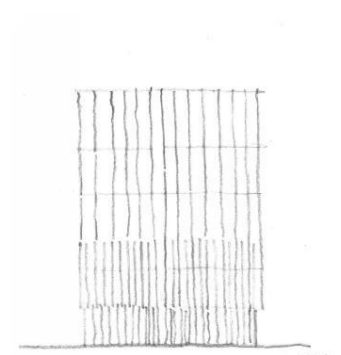
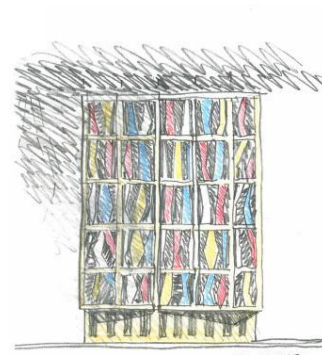
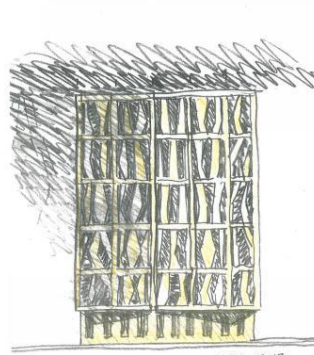
Public Circulation Precedents





North Elevation Studies





East Elevation Studies





US Supreme Court



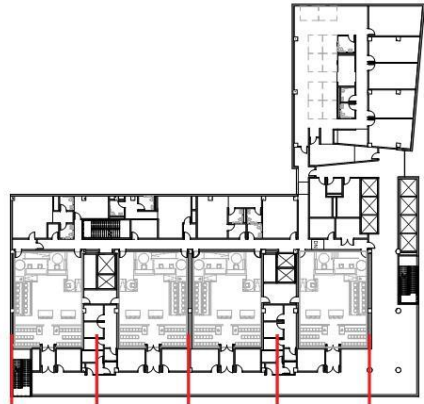
Lindsey-Flanigan Courthouse

ORDER | STABILITY | PROMINENCE | PERMANENCE | STRENGTH | TRANSPARENCY

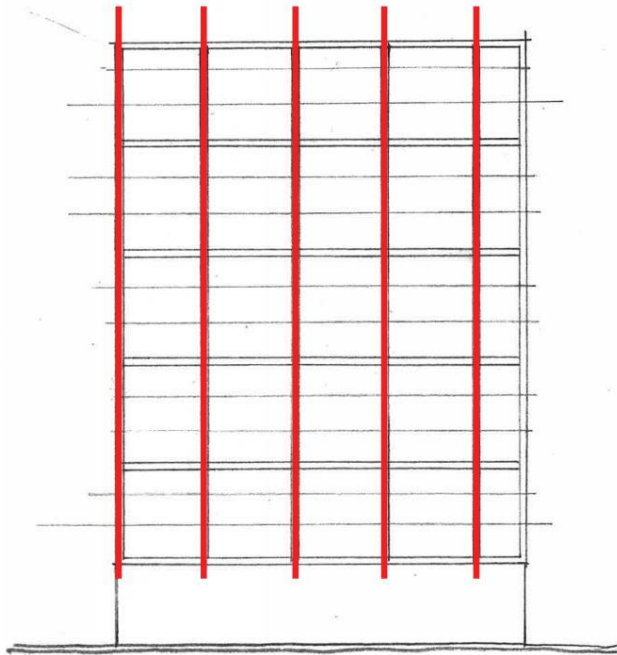
Multnomah County Central Courthouse



SRG PARTNERSHIP INC | CGLRICCI GREENE



ORDER | STABILITY | PROMINENCE | PERMANENCE  
STRENGTH | TRANSPARENCY



East Facade Development Study



Multnomah County Central Courthouse



SRG PARTNERSHIP INC | CGLRICCI GREENE





Murcia City Hall, Spain

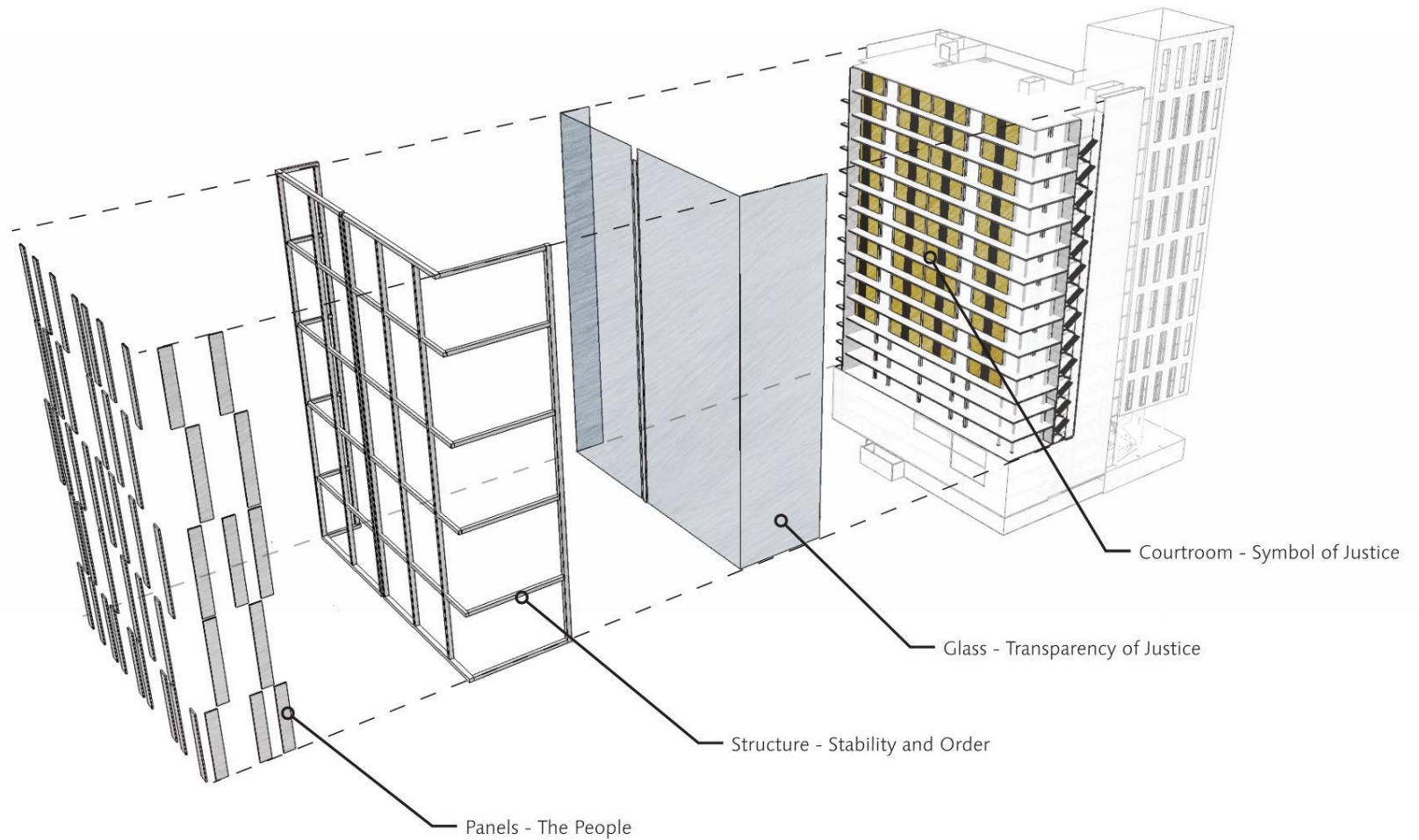
DIVERSITY | COMPLEXITY | EVERCHANGING  
DYNAMIC | FLUID | LYRICAL



Multnomah County Central Courthouse



SRG PARTNERSHIP INC | CGLRICCI GREENE



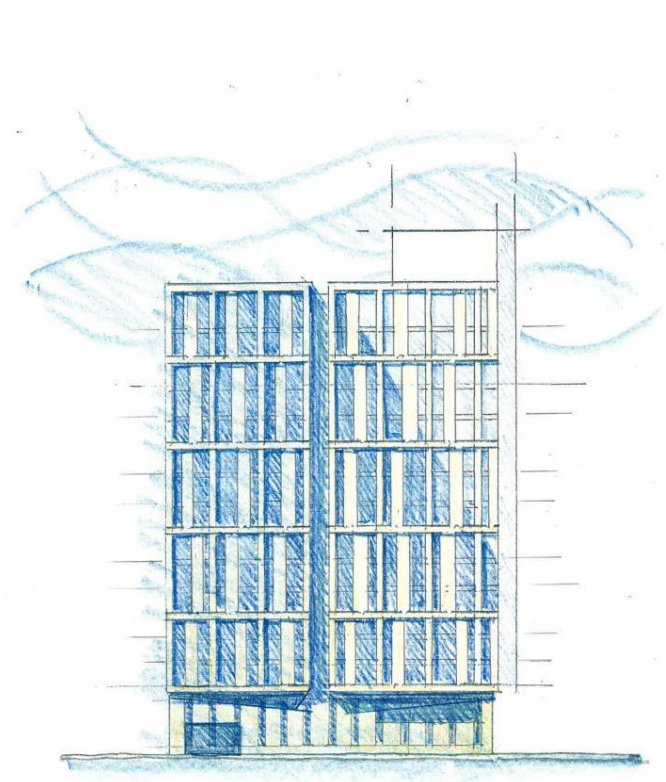
East Elevation Symbolism Study

Multnomah County Central Courthouse



SRG PARTNERSHIP INC | CGLRICCI GREENE





East Elevation Study



Multnomah County Central Courthouse



SRG PARTNERSHIP INC | CGLRICCI GREENE



View from Morrison Bridge



Questions?