



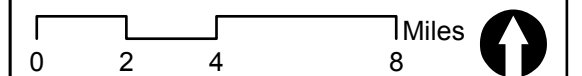
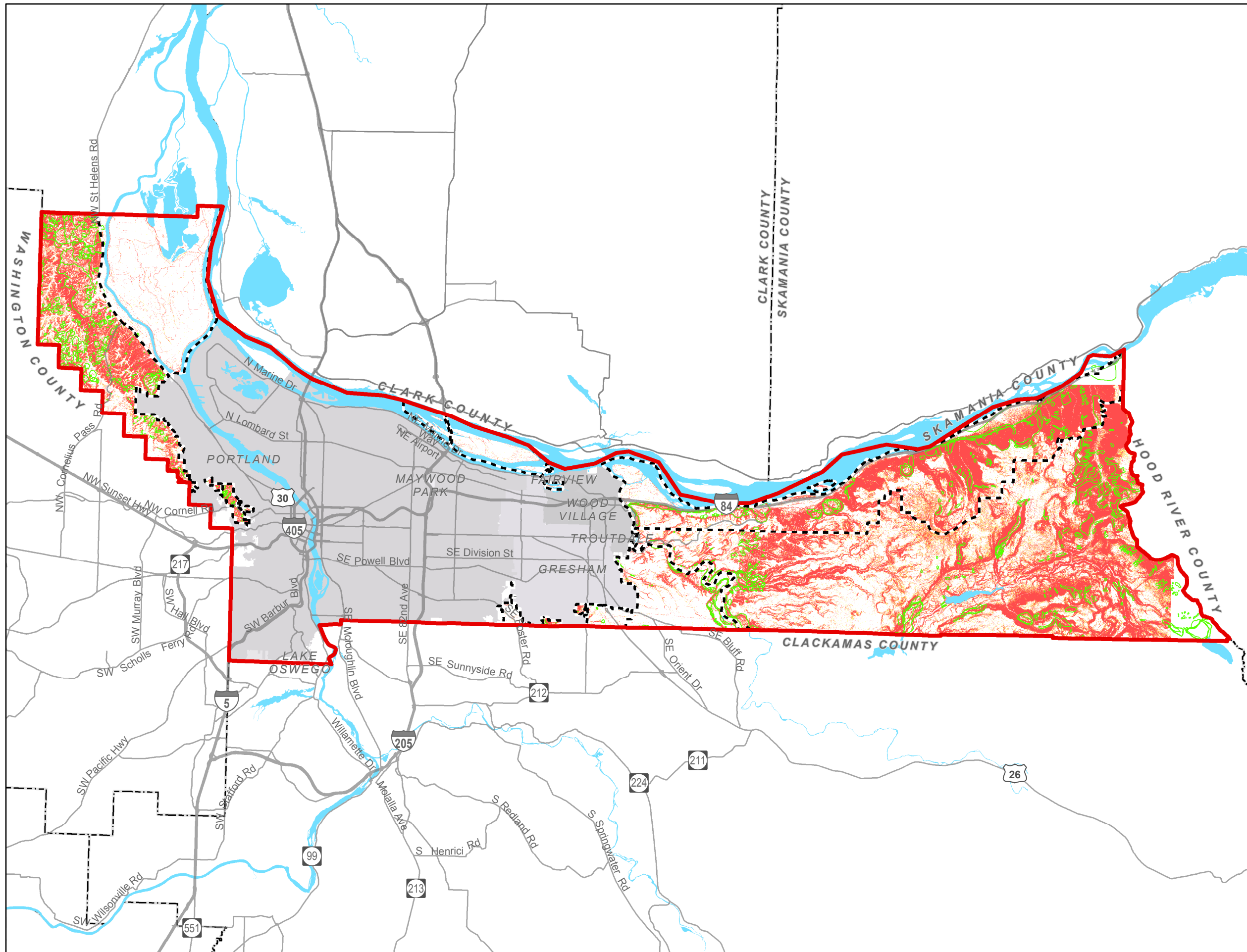
Comprehensive Plan

Legend

- Multnomah County
- Planning Subareas
- Historical Landslides

Steep Slopes

- Slopes 20-25%
- Slopes >25%



Prepared By:
GeoEngineers and APG

Date:
3/23/2016

Coordinate System:
NAD 1983 HARN State Plane Oregon North FIPS 3601

Disclaimer:
Unofficial depiction; for illustrative purposes only.