

Stark St Beaver Creek Culvert

Project updates



Staff Introductions

- Road Engineering Program Manager
 - Riad Alharithi
- Transportation Planning Manager
 - Joanna Valencia
- Structural Engineer
 - Ken Huntley
- Water Quality Specialist
 - Roy Iwai
- Communications Office
 - Mike Pullen
- Project Manager
 - Sara Jeffrey



Concerns/Questions from the Public

- Why does the road need to be closed?
- Public notice?
- Why does this work take so long?
- Impact on local businesses?
- Traffic movement during construction?
 - Vehicles (trucks and passenger vehicles),
 - Pedestrians, Bikes?
 - TriMet?
- If there are any other concerns or questions during construction, feel free to contact us via **email/phone** sara.jeffrey@multco.us (503) 988-0215 or the project website comment form:



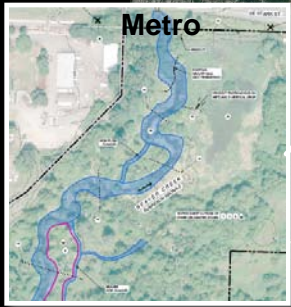
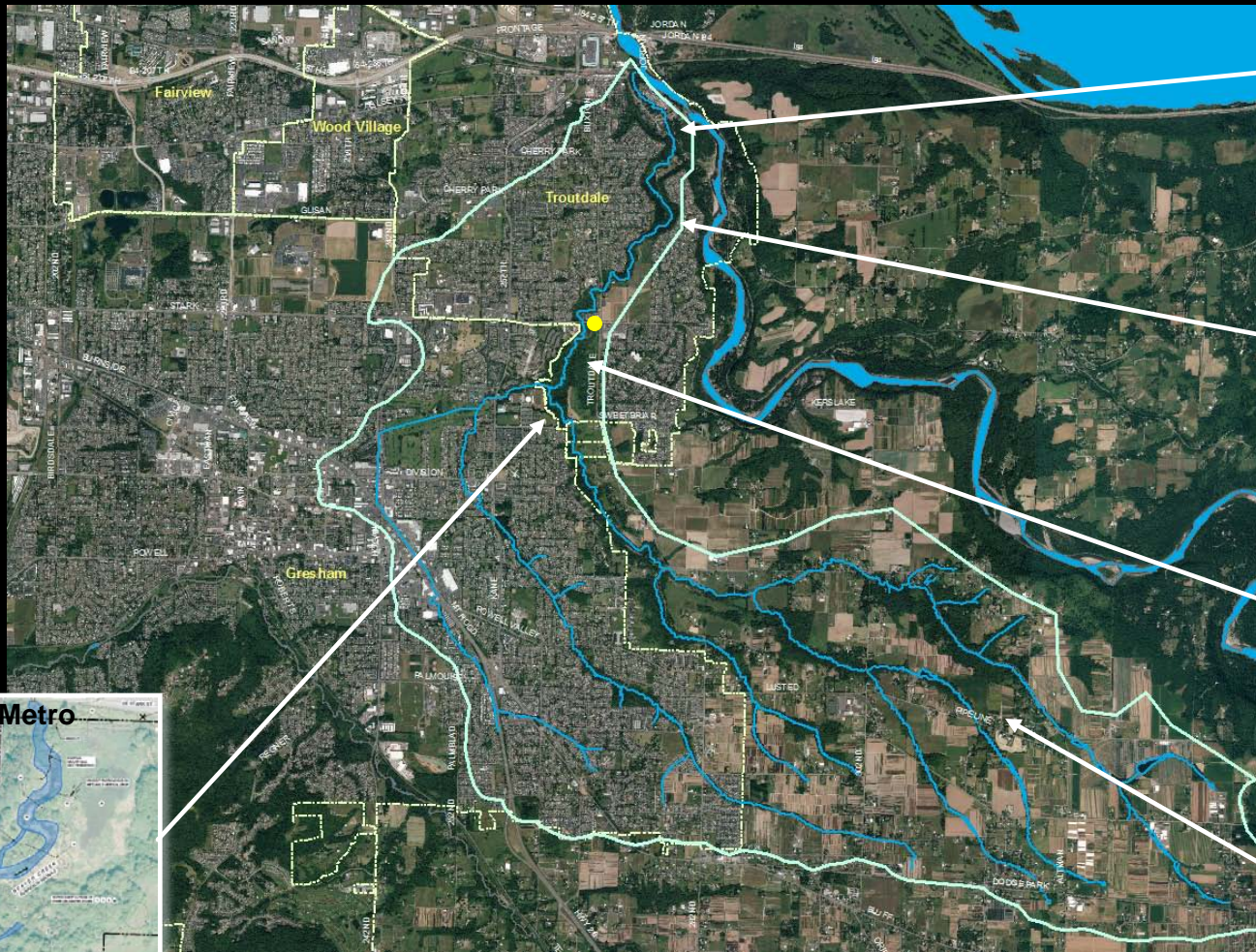
<https://multco.us/roads/webform/stark-street-culvert-replacement>

Overview

- Project background
 - Project Purpose
 - Community Improvements
 - Continuity of future Stark St
 - Funding
 - Public Outreach
- Design Overview
- Construction Update
- Traffic Control
- Questions



Community Improvements



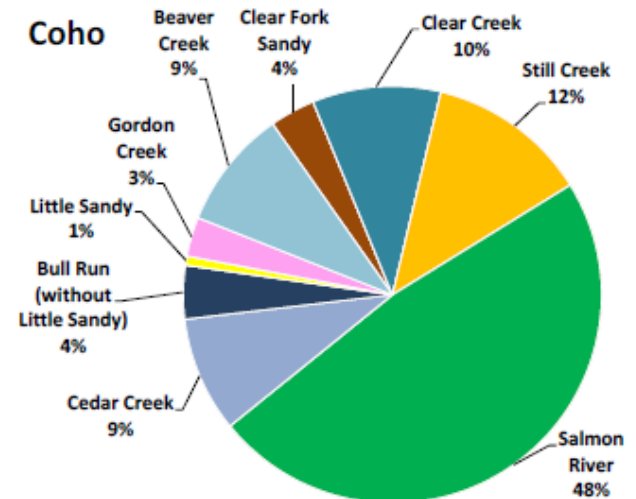
Project Purpose

Why are we doing this project?

- Threatened coho and Chinook salmon, steelhead trout, and 10 other species
- Beaver Creek is an important tributary of the Sandy River
- Stark St culvert is a priority fish barrier



Coho Smolts: Sandy River Basin



Project Purpose

Why are we doing this project?

Culvert and fish ladder at Stark St



Project Purpose

Why are we doing this project?

Culvert at Cochran Road



Project Purpose

Why are we doing this project?

Culvert and fish ladder at Troutdale Rd



Project Purpose

Why are we doing this project?

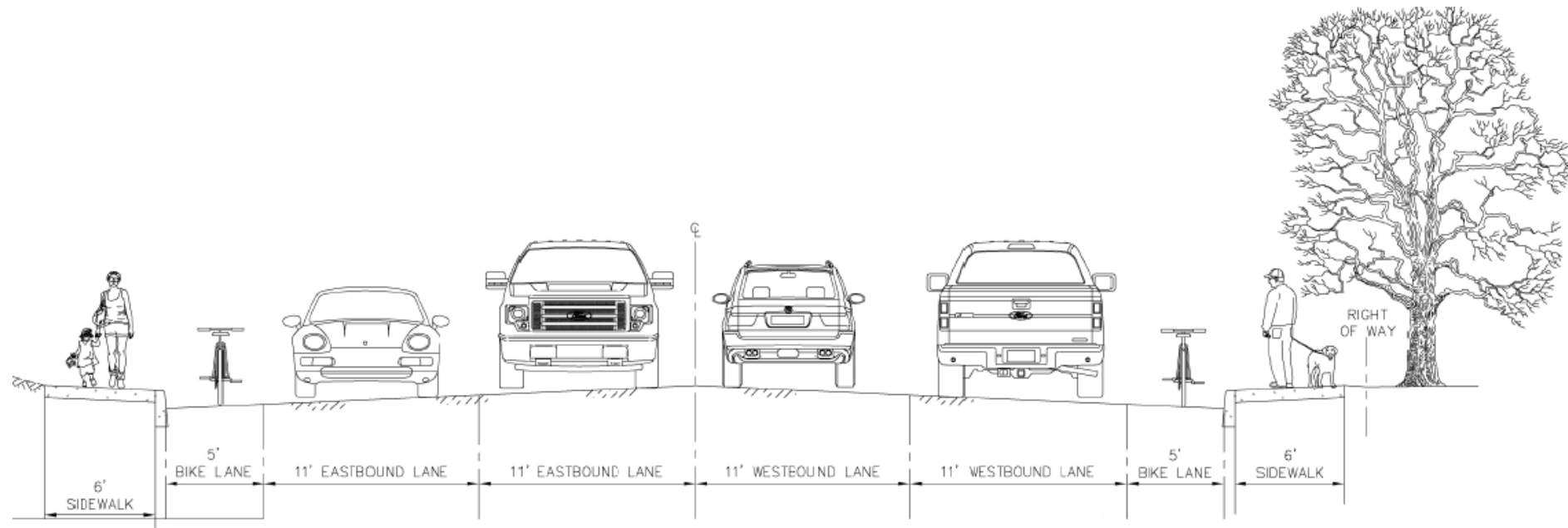
- Supports passage of:
 - Beaver dam debris
 - Large wood
 - Sediment
 - Wildlife
- The current culvert is undersized for the amount of rainfall we get



Future Stark St.

Why are we doing this project?

- Supports future plans to widen Stark Street to accommodate traffic, bicycles, and pedestrians



Funding (FHWA, County, City)

-  obligated in 2014
- Construction funds need to be spent by this year

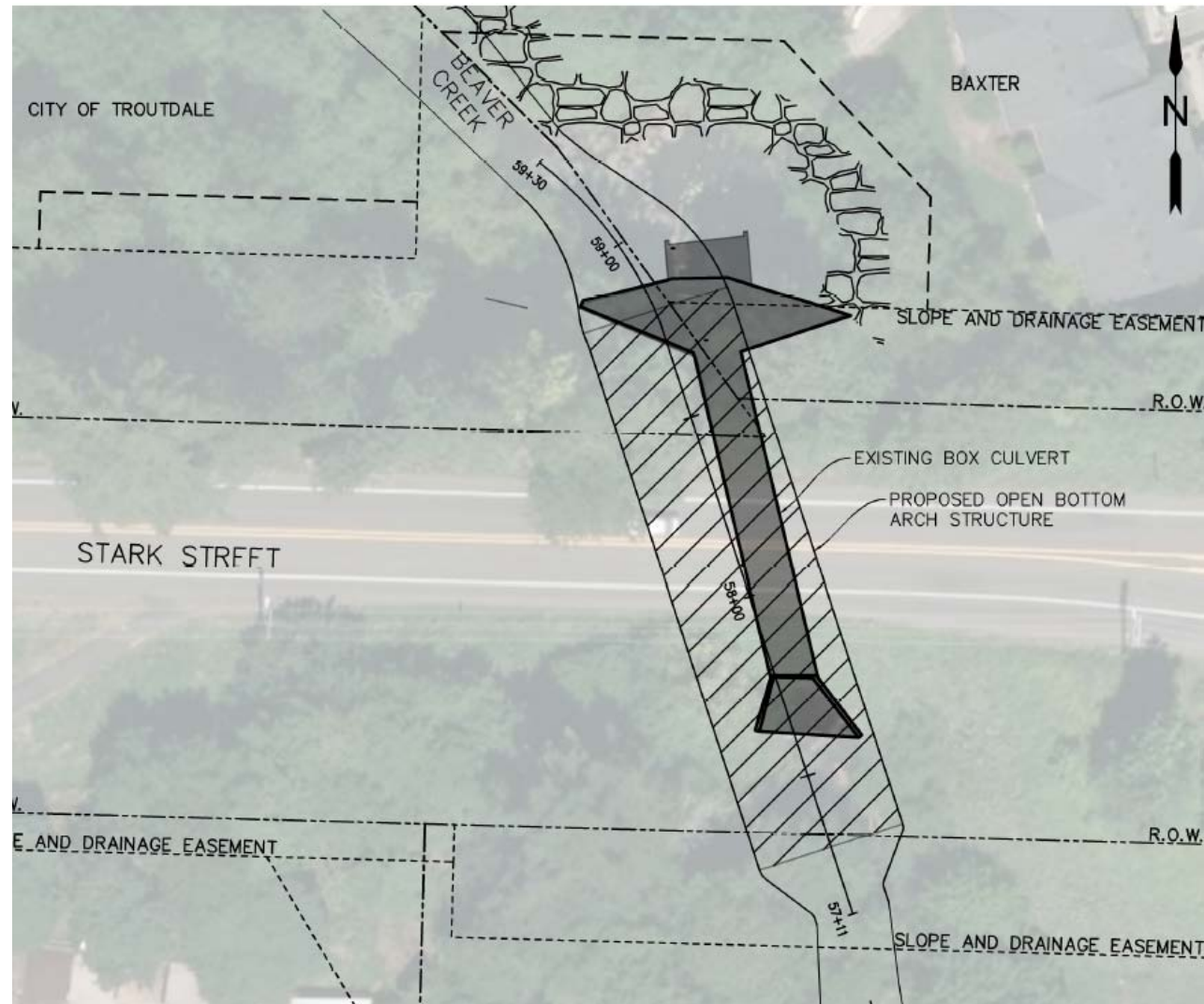


Previous Public Outreach

- 7/19/14 – Article in [Oregonian](#)
- 12/2015 – Project Webpage
- Sandy River Basin
- [City of Troutdale Public Works Webpage](#)
- Watershed Council Website Article
- Gresham Outlook Article
- 12/9/15 – Public Meeting at MHCC
- 4/16/16 – Gresham Saturday Market
- 8/24/16 – City of Troutdale Facebook Article
- 8/27/16 – Gresham Saturday Market
- 4/15/17 – Gresham Saturday Market
- 6/18/17 – MHCC Strawberry Short Course Stream Tour and Tabling

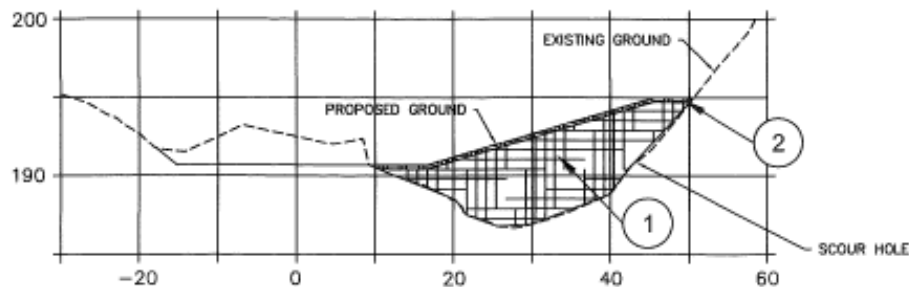
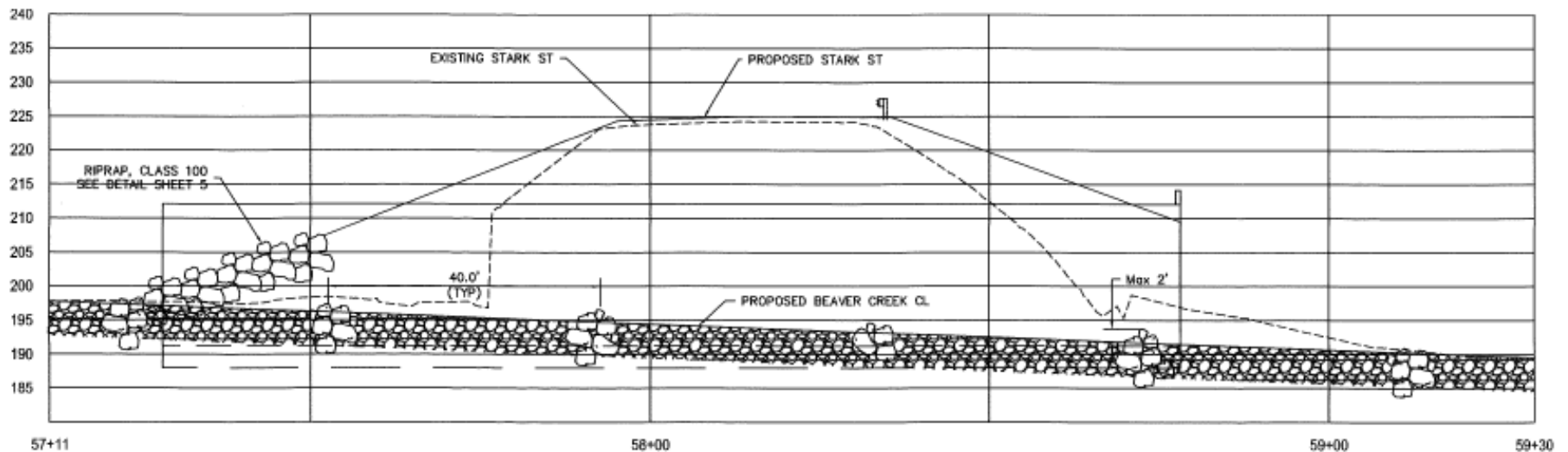
Design Overview

Why is this work going to take so long?



Design Overview

Why is this work going to take so long?



- Habitat Improvements
- Stream Restoration

Utility Coordination

Why is this work going to take so long?

■ Utility Conflicts:

- **Gas (NW Natural)**
 - Relocation completed
- **Water (City of Troutdale)**
 - No impact to services
- **Sanitary Sewer (City of Troutdale)**
 - Bypass plan
 - No impact to services
- **PGE Power Poles**
 - Outer edge of project limits
- **Frontier/Communications – Concrete encased Fiber**
 - one week to build a suspension system to keep the duct bank in place during construction



Why does the road need to be closed?

-
- STRUCTURAL PLATE ARCH CULVERT
- ARCH CULVERT
- 100-YEAR FLOW = 209.27'
- R=20'-4"
- EXISTING CONCRETE BOX CULVERT TO BE REMOVED
- SEE SHEET 2A FOR DETAILS
- HDPE TEMPORARY WATER MANAGEMENT PIPE
- 1'-0" TYP.
- 6" GRANULAR STRUCTURAL BACKFILL
- CONCRETE FOOTING SEE FOOTING DETAIL BELOW
- 40'-8"
- BASE OF FOOTING AT 188' ELEVATION
- EXISTING TROUTDALE BASE
- TYPICAL SECTION**
- NTS

Traffic Control - Vehicle Detour

Will the **TRI MET** route change?

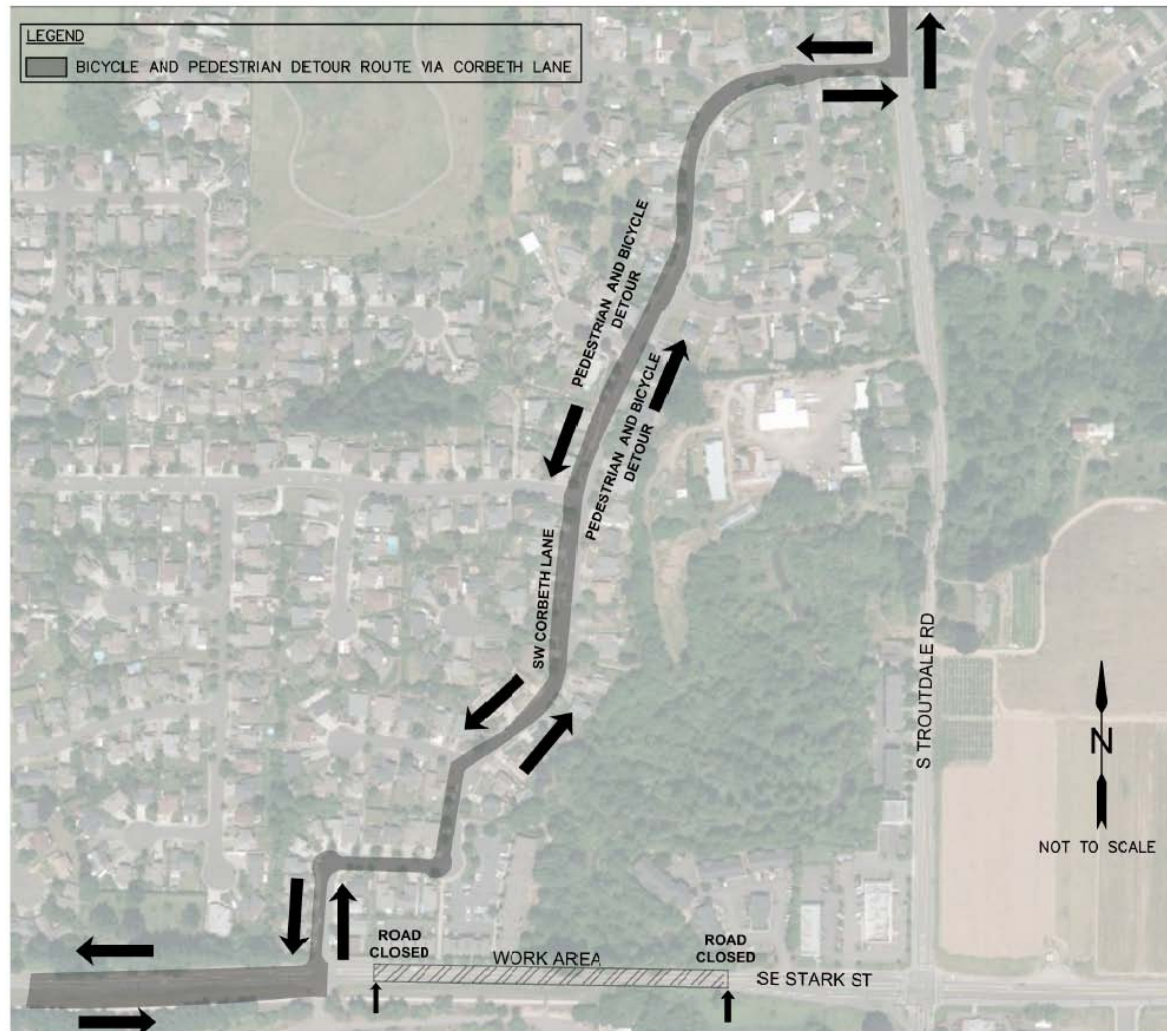
- Vehicle detour
 - NE Kane Dr. to SE Cochran Rd. to S. Troutdale Rd.
- **TRI MET** route



Traffic Control - Bike/Ped Detour

Will traffic be detoured through Corbeth Lane?

- Pedestrian/
Bicycle Detour
 - SW Corbeth Ln



Construction Update

- Contractor selected:  Thompson Bros. EXCAVATING, INC.
- Pre construction conference was May 8th
- Construction schedule
 - Begin Construction mid June
 - Completed by the end of October



Communication Before and During Construction

- Before Construction
 - Today's meeting
 - Thank you to Skyland Pub
 - Signage
 - Fixed signs (very shortly)
 - Variable message boards (5 days before construction start)
 - Business Open signs when road is closed
- During Construction
 - Weekly updates
<https://multco.us/roads/webform/stark-street-culvert-replacement>



Questions?

- If there are any other concerns or questions during construction, feel free to contact us via **email/phone**
 - sara.jeffrey@multco.us (503) 988-0215or the project website comment form:
<https://multco.us/roads/webform/stark-street-culvert-replacement>