



MULTNOMAH COUNTY

Central Courthouse

Board Briefing

January 30, 2018

JD Deschamps, PE

Multnomah County

Facilities and

Property Management

Mike Day

DAY CPM

Owner's Representative

Multnomah County Courthouse Construction



BRIEFING AGENDA

- Construction update and photos
- Diversity Dashboard
- Financial Update
- Schedule Update

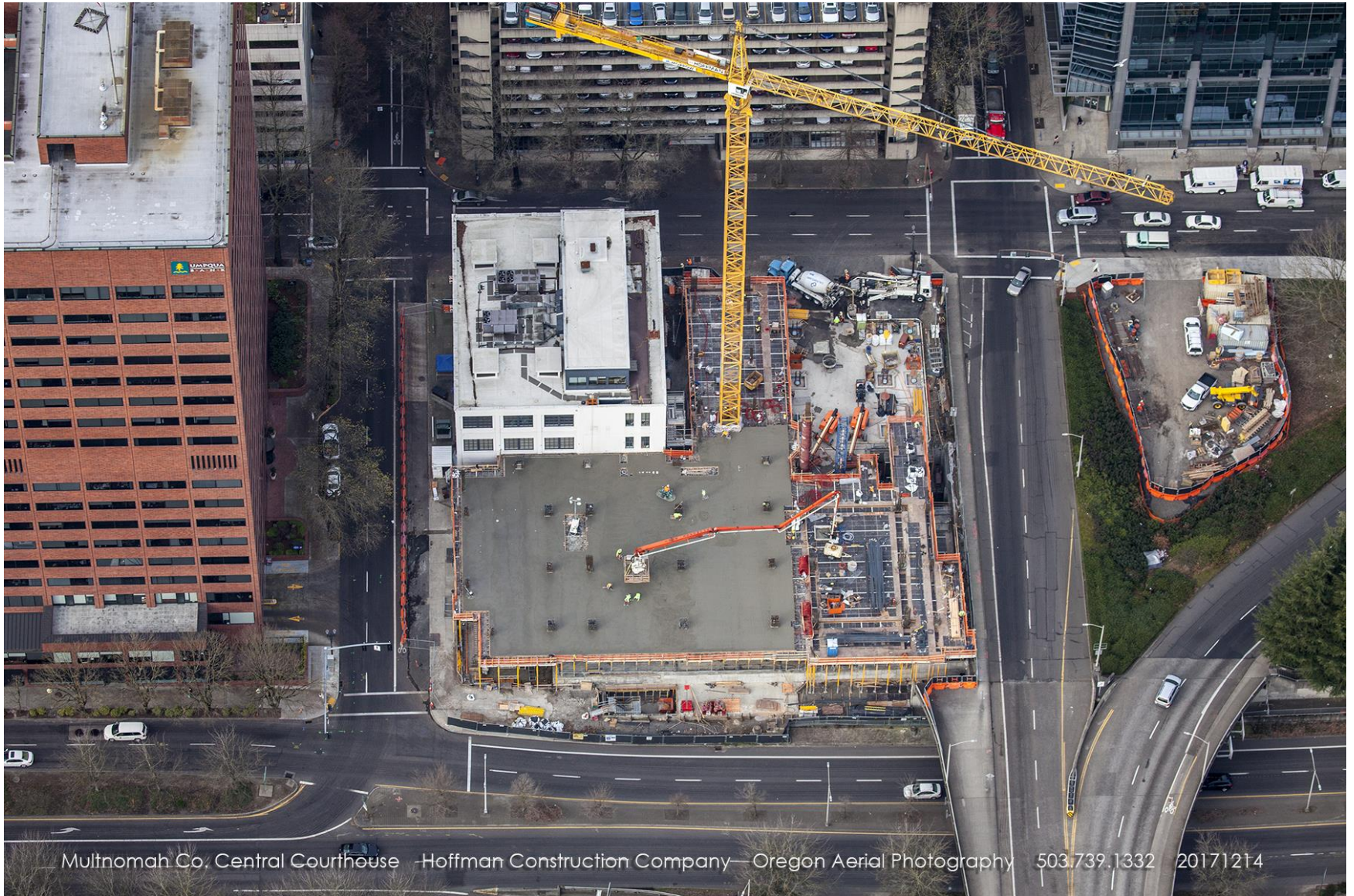


Construction Status

- 2nd and most of 3rd Floor concrete has been placed
- Main entry columns have been poured
- Back-up Generator installed in basement
- Minimal impacts to traffic
- Coordinating with PBOT and County Transportation groups



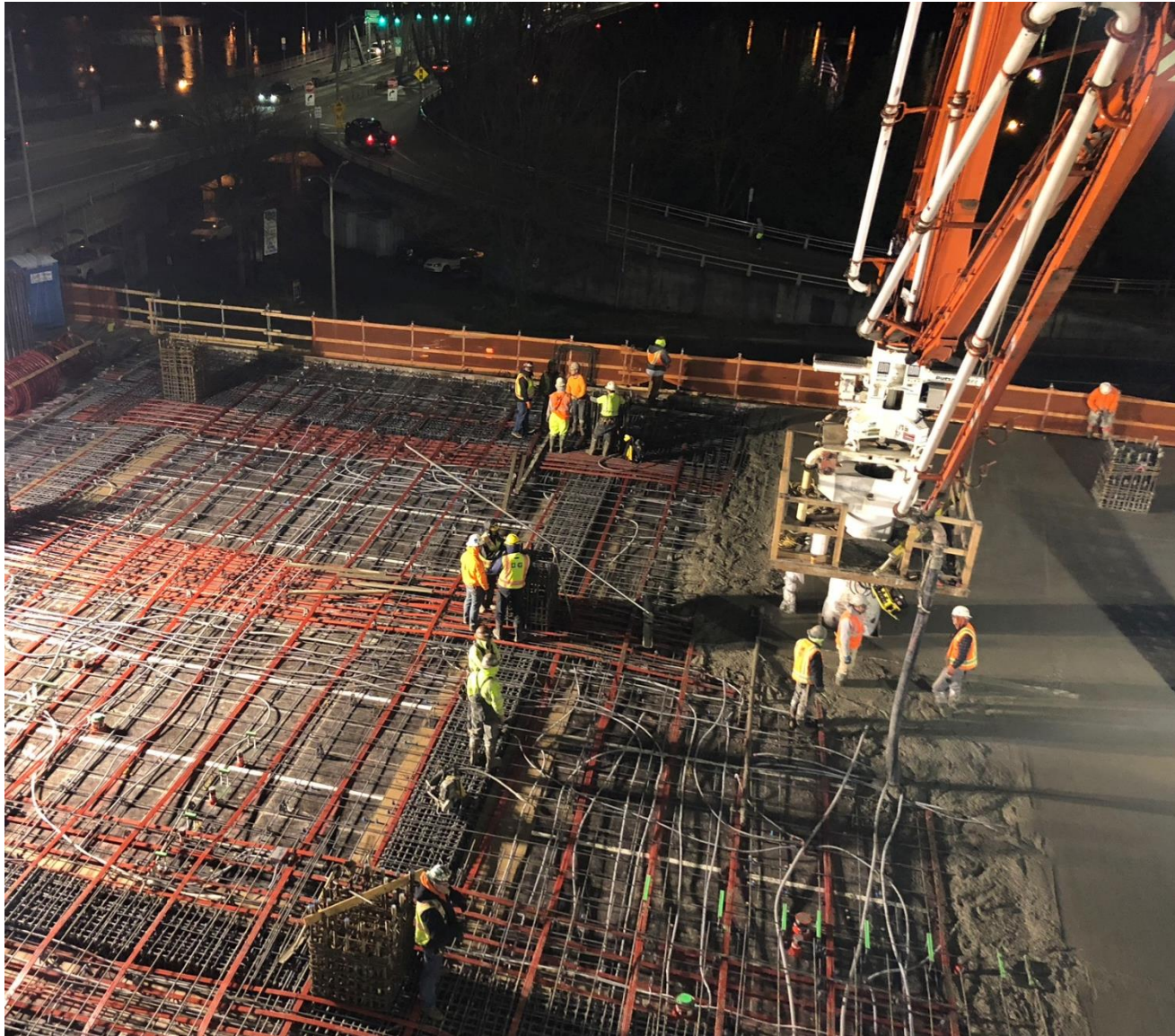
Aerial Photo



Multnomah Co. Central Courthouse Hoffman Construction Company Oregon Aerial Photography 503.739.1332 20171214



Placing Concrete

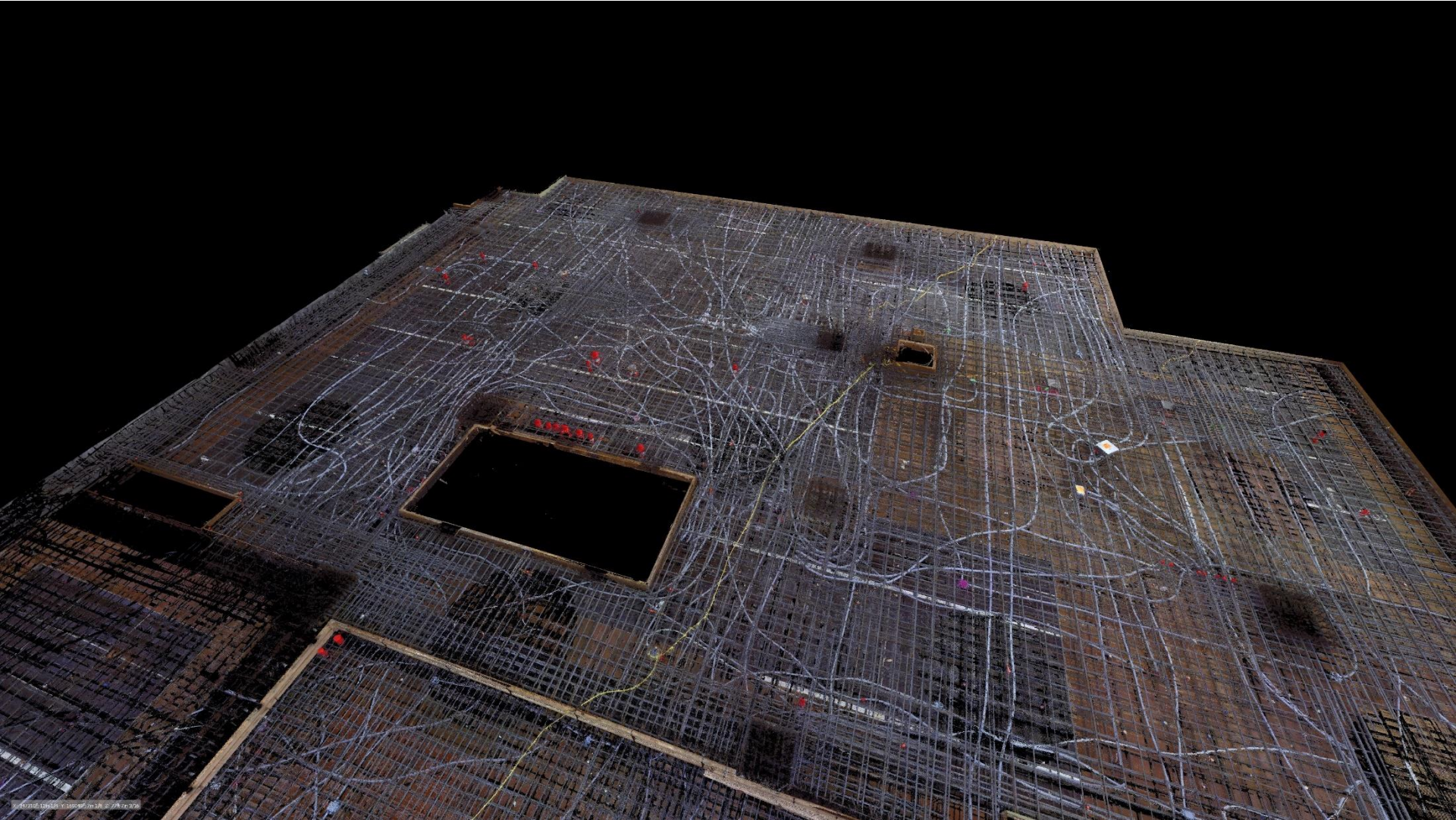


Lobby Columns





Scanned Deck



Falsework



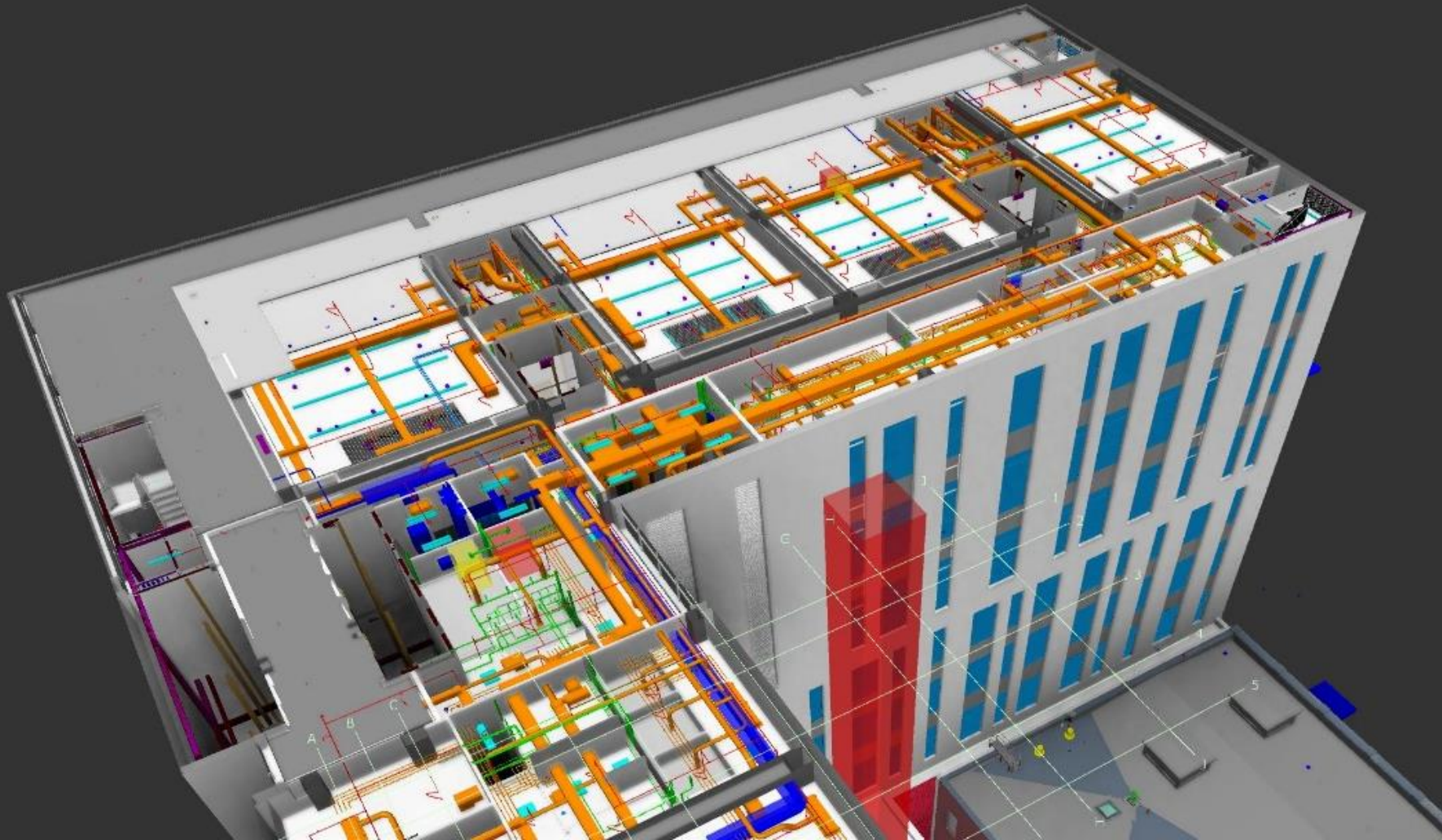
Façade Water and Wind Testing



Façade Lateral Load Testing



Trade Coordination



Martin Luther King Jr. School - Art Project in Madison Street Covered Walkway



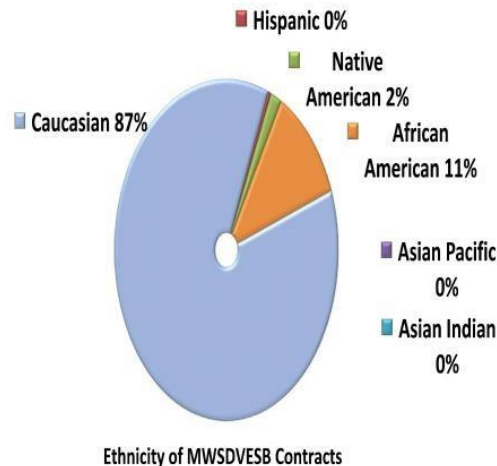


November 2017 MCCCH Construction Small Business Dashboard

Summary

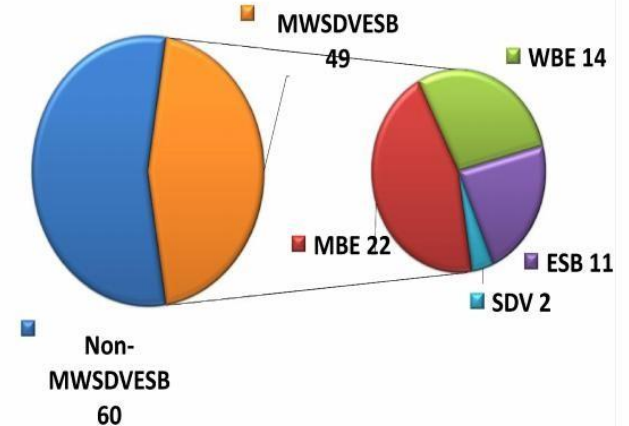
- These charts are based on contracts and dollars awarded to date.
- The contractor's goal is to award 20% of total contract dollars to MWS-DVESB firms. Currently, the MWSDVESB Contracted is 19.6% *

MCCCH MWSDVESB Firms Ethnicity

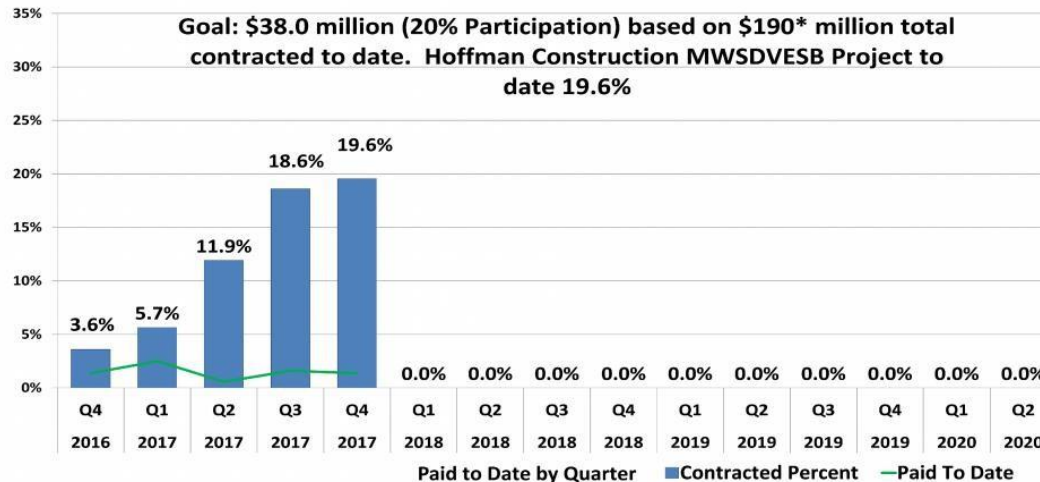


MCCCH Total Contracts Awarded

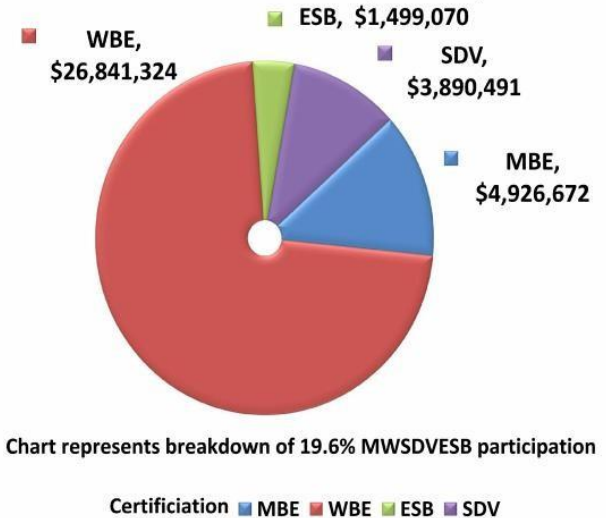
Total Contracts - 109



Multnomah County Central Courthouse Construction MWSDVESB Participation Hoffman Construction Contracted and Paid to Date



MCCCH MWSDVESB Participation By Dollars



Glossary: MBE—Minority-Owned Business, WBE—Women-Owned Business, ESB—Emerging Small Business, SDV - Service Disabled Veteran

*Represents adjusted GMP construction value

Cumulative Construction Data from 10/31/2016 to 11/30/2017.

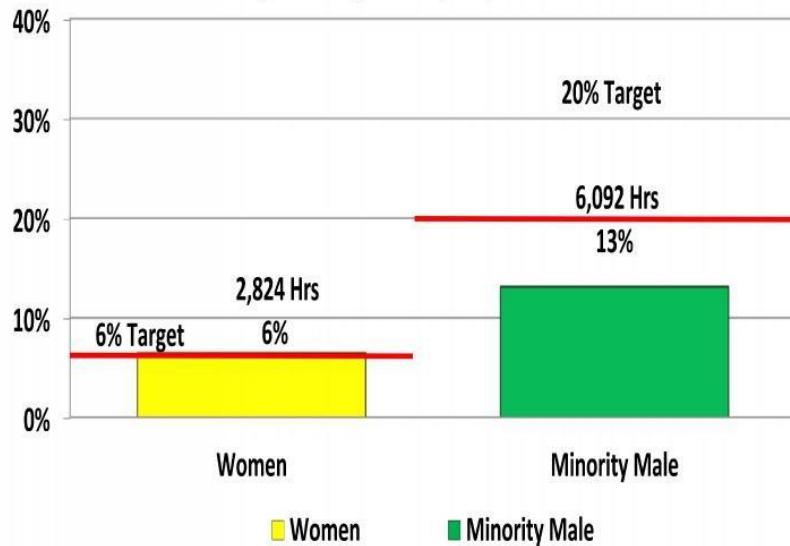


November 2017 MCCCH Construction Workforce Dashboard

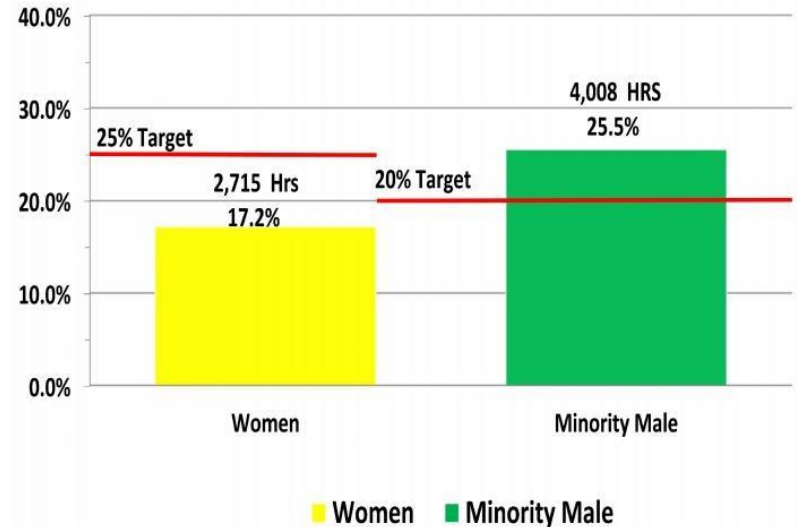
Project Summary

- Total Project Apprenticeship to date is 25%
- Project Goal is 20% apprenticeship by trade
- Project Total minority participation is 16% and female is 9%

Total Workforce Hours (Journey Level) 47,380 Hrs



Total Workforce Hours (Apprentice Level) 15,726 Hrs



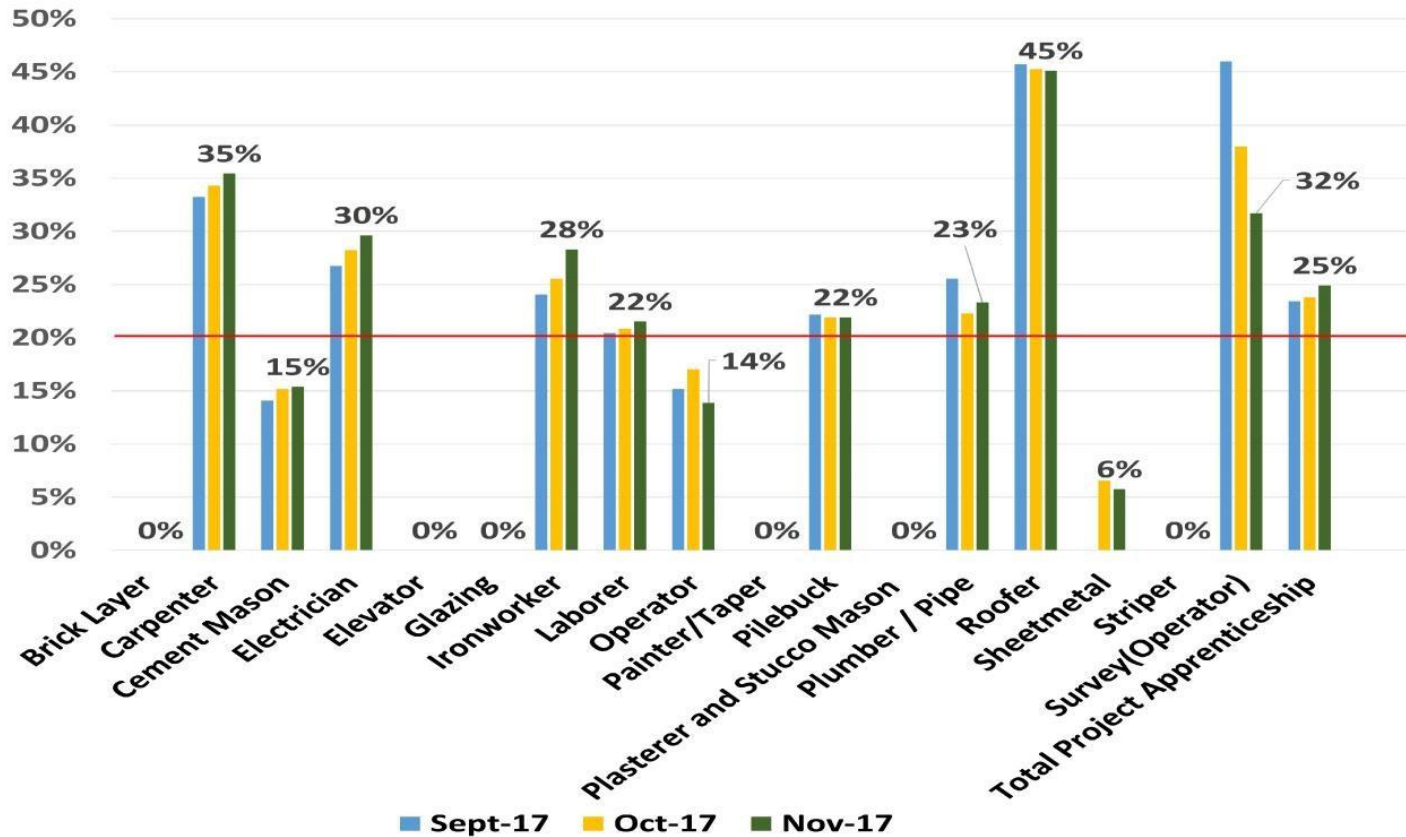
Cumulative Construction Data from 10/31/2016 to 11/30/2017

WTHP Participation for minority men and all women for apprentice and journey levels in accordance with the PLA.



November 2017 MCCCH Construction Workforce Dashboard

MCCCH Apprenticeship by Trade



Cumulative Construction Data from 10/31/2016 to 11/30/2017

WTHP Participation for minority men and all women for apprentice and journey levels in accordance with the PLA.

Produced by Group AGB, Ltd.

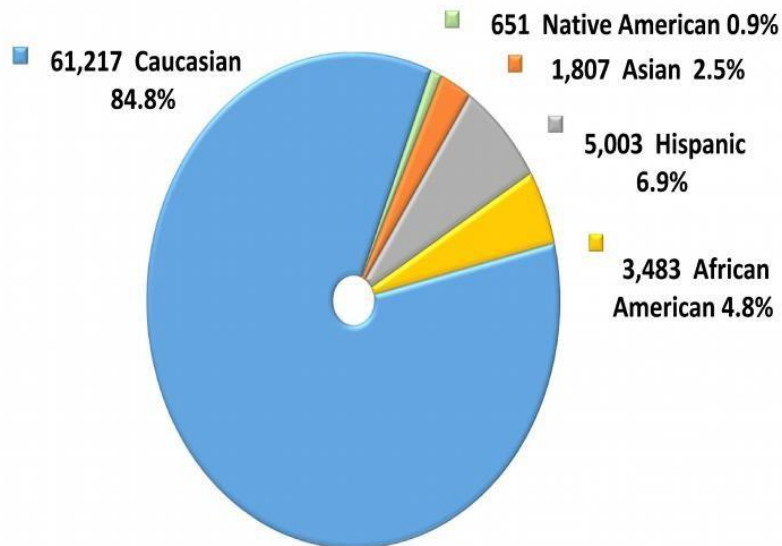


November 2017 MCCCH Construction Workforce Dashboard

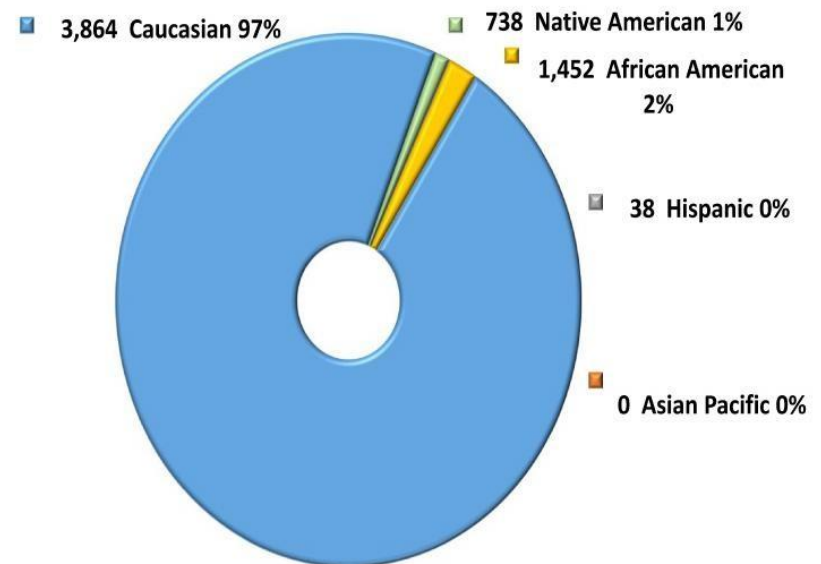
Project Summary–

- Project has achieved 98% of the 20% MWSDVESB Goal
- Continuing to lock in Trade Partner MWESB participation values
- Direct communication with subs who have Apprentice/ workforce diversity shortfalls

Total Male Workforce By Ethnicity



Total Female Workforce Ethnicity

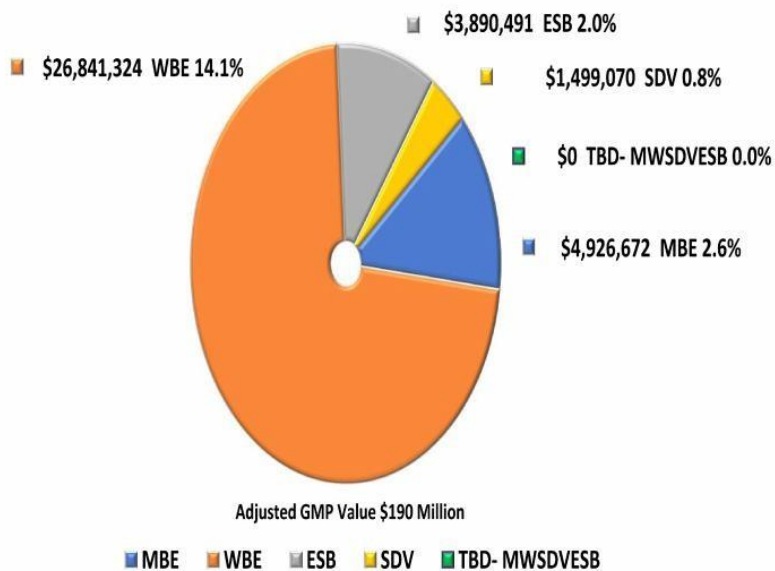




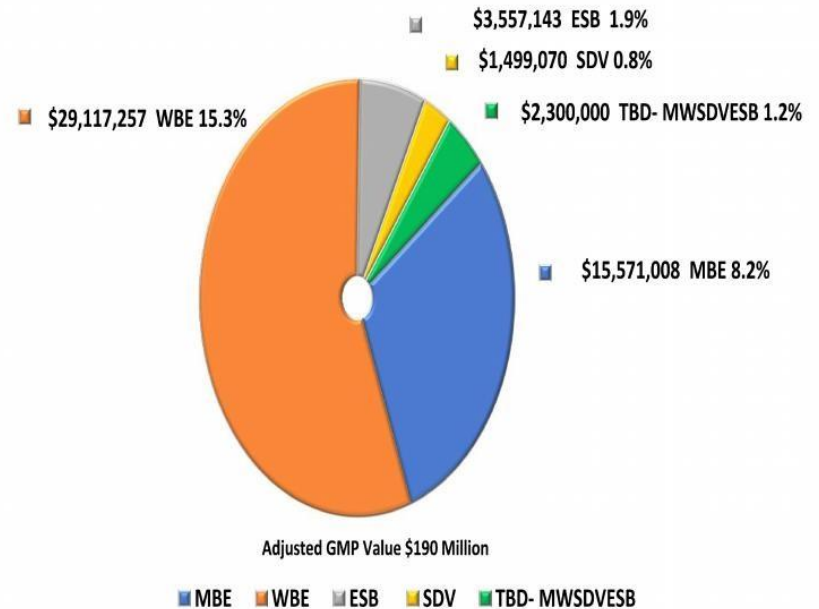
November 2017 MCCCH Construction

MWSDVESB Actual vs Forecast Percentage

MCCCH MWSDVESB Current Percentage 19.6% - November 2017



MCCCH MWSDVESB Forecast Percentage 27.4% - Dec 2020



Cumulative Construction Data from 10/31/2016 to 11/30/2017
Produced by Group AGB, Ltd.



Apprentice Outreach Event



Apprentice Outreach Event





MULTNOMAH COUNTY COURTHOUSE CONSTRUCTION PROGRAM

Green Dot

We believe in safe and
productive worksites. We
believe that reducing the
number of workers who are
impacted by harassment,
discrimination, hazing, and
other forms of aggression is not
only possible, but probable, if
we all do our part. We are proud
of this worksite. Our hope is
that everyone who works here
is safe and respected.

If you witness or experience
harassment, discrimination or
hazing, please call:

Kelly Rowland
Hoffman Superintendent
503-708-6730

CONFIDENTIAL REPORTING:
Tiffany Thompson,
Advocacy Manager
Oregon Tradeswomen
503-335-8200

Green Dot for the Trades is a
prevention program funded by
BOLI and ODOT's Civil Rights
Division for the Respectful
Workplaces in Highway
Construction Project.
Green Dot for the Trades partners
at the Multnomah County
Courthouse include:
-Oregon Tradeswomen, Inc.
-Green Dot Etcetera, Inc.
-Portland State University
-Hoffman Construction
-Constructing Hope



Financial Update

	Budget	Costs to Date
Construction	\$246,400,000	\$25,200,000
Soft Costs	\$64,600,000	\$45,400,000
Total (incl. contingency)	\$324,500,000	\$70,600,000

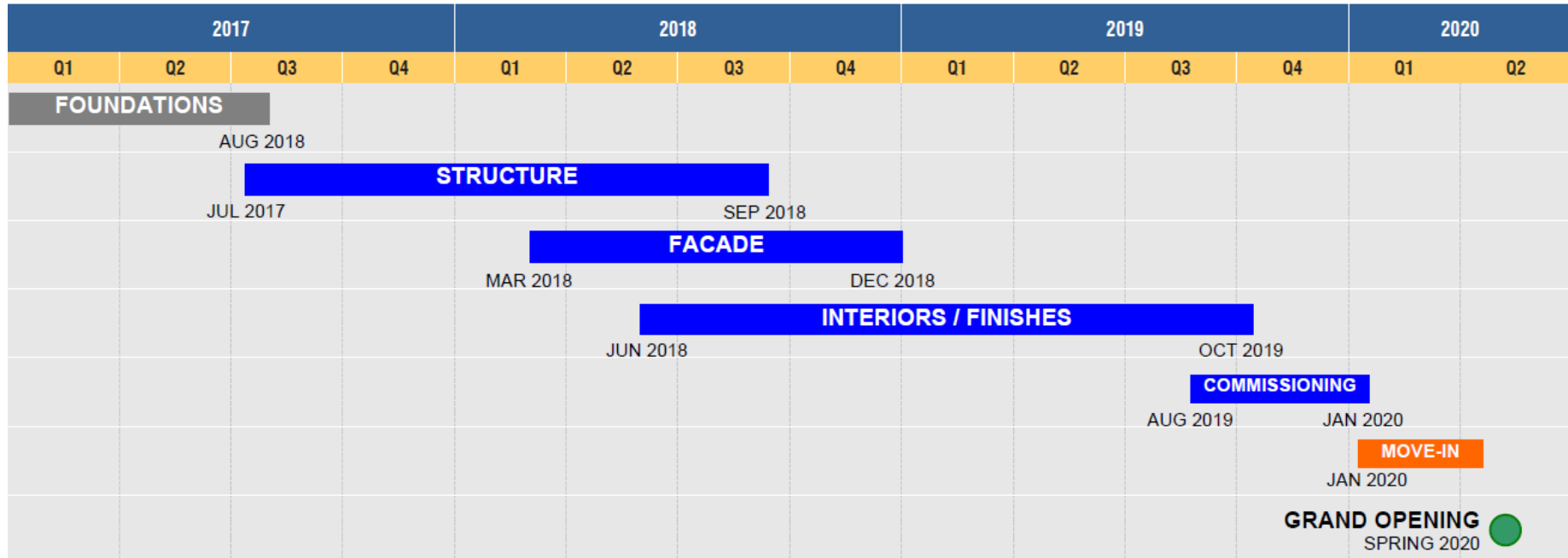
Contingency Budget	\$13,500,000
Contingency Allocations	\$600,000
Remaining Contingency	\$12,900,000

Financing

County funding (OTO)	\$79,400,000
State Payments to County	\$30,050,000
County Bonds sale	\$96,000,000



Schedule



- Pedestrian walkway on Madison - February
- Place concrete for remaining floors
- Install manlift on Madison
- Trades to start working on lower floors (plumbing, electrical, mechanical)





Questions?