

Historic Columbia River Highway- Troutdale

Pedestrian Safety and Accessibility Upgrades

City of Troutdale and Multnomah County
February 6, 2017



Agenda

Introductions

Background

Pedestrian Safety and Accessibility Upgrades

Discussion

Next Steps



Background

Improvements identified in City Plans

Troutdale Town Center Plan, 1998

Troutdale Transportation System Plan (TSP), 2014

Troutdale Capital Improvement Plan (CIP), 2016

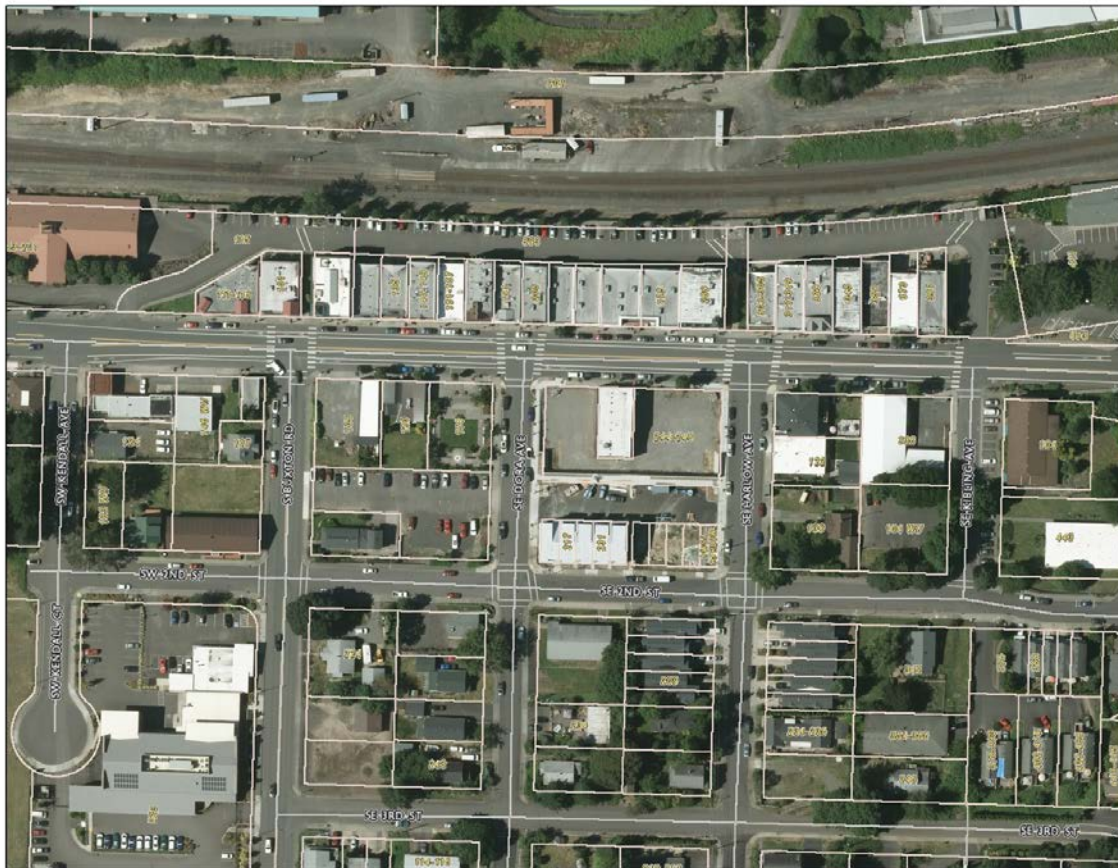
Aligns with Discovery Block Development and continued development of downtown

North route for Troutdale Elementary Safe Routes to School Action Plan



Pedestrian Safety and Accessibility Upgrades

Project: Installation of curb extensions (also known as bulbouts) on the northside of Historic Columbia River Highway on Dora/Historic Columbia River Highway and Harlow/Historic Columbia River Highway. Aligns with curb extensions being installed on the southside as part of the Discovery Block Development.





Pedestrian Safety and Accessibility Upgrades

Why construct curb extensions?

Implements Troutdale Plans

Safety Benefits

Accommodation of disabilities (Americans with Disabilities Act)

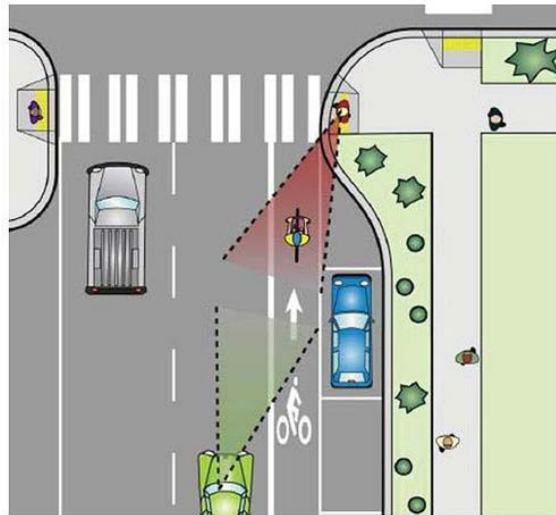
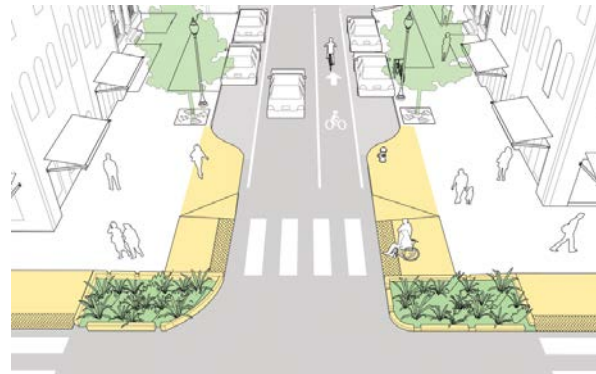


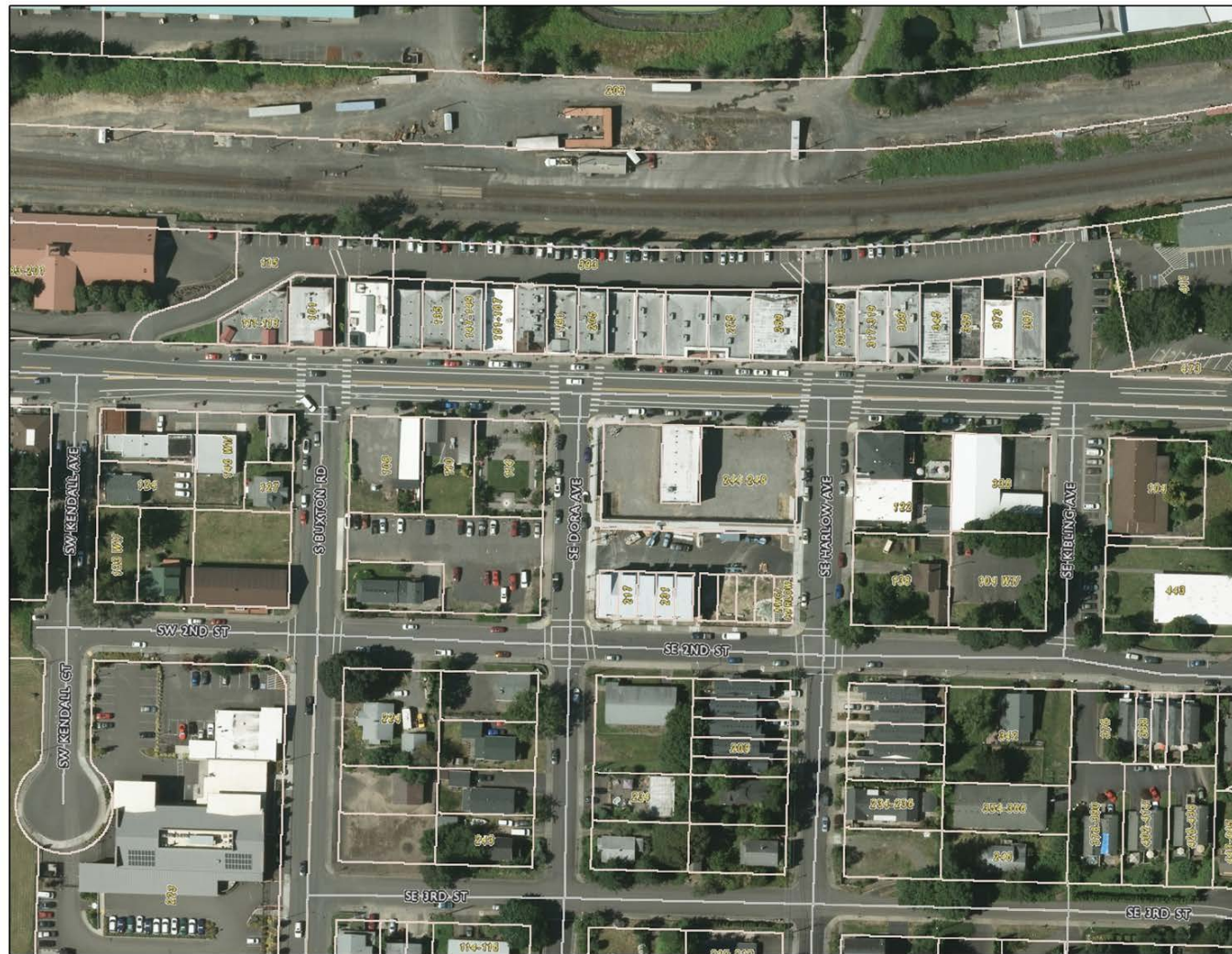
Figure 5-24: Roadway designed with curb extensions and integrated parking lanes





Discussion

- Opportunities
- Concerns
- Other items to Consider





Next Steps

Troutdale Parking Study as part of Update to Town Center Plan

Design and Construction

Staff Contacts

Joanna Valencia, Multnomah County

503-988-0219

Travis Hultin, City of Troutdale

503-674-7265

