

1600 SE 190<sup>th</sup> Avenue, Portland OR 97233-5910 • PH. (503) 988-3043 • Fax (503) 988-3389

## Public Hearing **Canceled**

**Case File:** T3-2017-9165 / T4-2017-9166 / EP-2017-6780

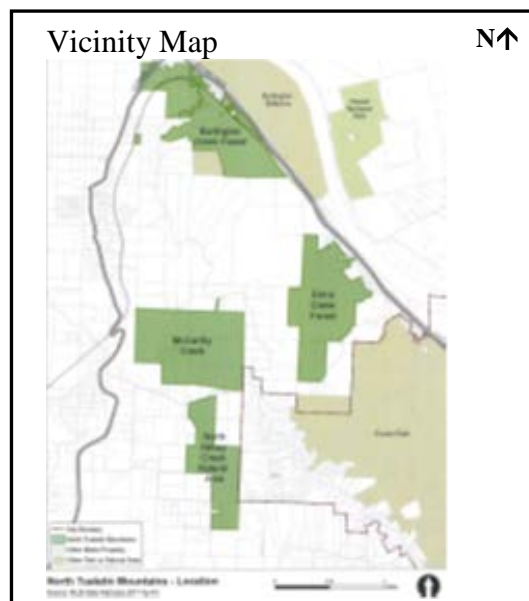
**The Public Hearing in front of the Multnomah County Planning Commission originally scheduled for **May 7** is canceled.**

A future notice with the rescheduled hearing date and time will be mailed prior to the rescheduled hearing.

For more information on the proposal or to provide written testimony please visit the following website:

<http://multco.us/northtualatin>

You may also contact Kevin Cook, Senior Planner at 503-988-0188 or [kevin.c.cook@multco.us](mailto:kevin.c.cook@multco.us)



**Proposal:** Metro seeks county land-use approval for a public nature park project, which will include trail development of multi-use trails. The applications are for a Quasi-Judicial Revision to the Multnomah County Comprehensive Plan to adopt Metro's North Tualatin Mountains Access Master Plan – And for the following permits to develop park related parking, trails, restrooms and related amenities: Conditional Use, Community Service Use, Design Review, Significant Environmental Concern, Hillside Development, Protected Aggregate and Mineral Sites, Lot of Record, Exception to the Secondary Fire Safety Zone, Adjustment to the Forest Practices Setbacks, and Forest Development Standards. More information can be found at [multco.us/northtualatin](http://multco.us/northtualatin)

**Location:** North Tualatin Mountains, west of Forest Park, east of Cornelius Pass, south of U.S. Hwy 30 and north of Washington County.

**Applicant:** Metro Parks and Nature  
600 NE Grand Avenue  
Portland, OR 97232