

TRANSMITTAL LETTER

October 10, 2018



To: George Plummer
Multnomah County
Land Use and Transportation Program
1600 SE 190th Ave Portland, Oregon 97233

Magnus Bernhardt
Landscape Architect
Region One
123 NW Flanders St.
Portland, OR 97209
Phone: (503) 731-8283
FAX: (503) 731-8459
Magnus.u.bernhardt@odot.state.or.us

REGARDING: *Eagle Creek Fire Response Exhibits (revised), Coopey Quarry I-84 Vegetation Buffer Screening*

Attached is the following:

COPIES	DESCRIPTION
1-4	Eagle Creek Fire Response Tanner Creek Fencing Area, Toothrock West Fencing Area, Toothrock East Fencing Area, Fencing Areas
1	Coopey I-84 Vegetation Buffer Screening 10.02.18
1	Coopey Quarry I-84 / Vegetation Buffer Screening Exhibit 1B
1-5	NSA Application sheets: Coopey Quarry Reclamation Plan, Cross Sections, Landscape Plan for Revegetation, Plant Materials (2 sheets)

For the purpose of:

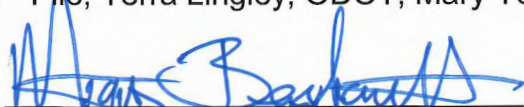
- ☒ For approval
☒ For your use
☒ As requested
☒ For review and comment
☐

- ☐ Approved as submitted
☐ Approved as noted
☐ Returned for corrections
☐ Confidential

*for Case
12-2018-9993

REMARKS: George, please call us with any questions or additional needs.

COPIES TO: File, Terra Lingley, ODOT; Mary Young, ODOT


Magnus Bernhardt

RECEIVED
2018 OCT 15 PM 2:08
MULTNOMAH COUNTY
PLANNING SECTION



Coopey Quarry I-84 / Vegetation Buffer Screening

Date: 10.8.18

Item	Unit	Quantity	Cost	Size	Spacing	Botanical Name	Notes	Exhibit 1B
Planting area	LS	1 (15600 SF)	\$1,500.00	N/A	N/A	N/A	Spray grass prior to planting	Spray twice
Trees	EA	180	\$10.00	2+1 (18"-24" tall)	10' O.C.	Douglas Fir (<i>Pseudotsuga menziesii</i>)	Triangular spacing	
Mulch	CUYD	150	TBD	N/A	N/A	N/A	Shredded wood from eagle creek fire	Coordinate with USFS
Wood Stakes	EA	24	TBD	6' tall	50' O.C.	N/A	Stakes to delineate planting/no mow area	Install 12-18" inches deep
Earth Berm	CUYD	90	\$40.00	N/A	N/A	N/A		

tabbies®

A.17

EXHIBIT

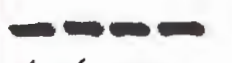
Coopey I-84 (SEE EXHIBIT 18)

Vegetation Buffer Screening 10.02.18

Legend



TREE PLANTING
AREA. 180
DOUGLAS FIR AT
10' O.C.



3-4' HIGH
EARTH BERM
WITH NATIVE
SEED

Google Earth

500 ft

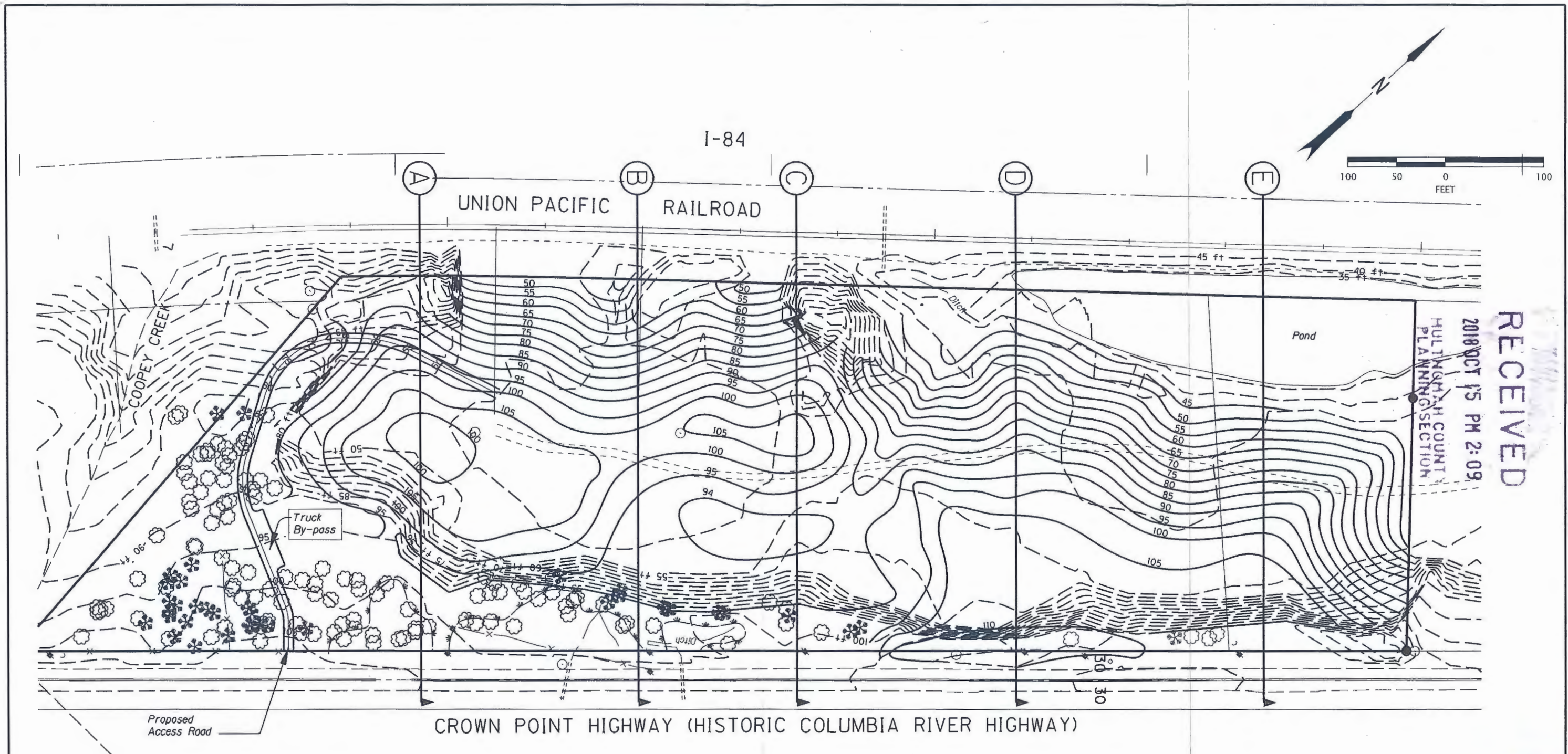


RECEIVED
2018 OCT 15 PM 2:09

EXHIBIT

A.18

tabbles



RECEIVED

2018 OCT 15 PM 2:09

HULTON COUNTY
PLANNING SECTION

GENERAL PROJECT NOTES:

1. Existing and proposed contours are shown at 5-foot intervals.
2. Topsoil will be stored at the west end when encountered during slide excavation. Topsoil may be brought in as a sourced material when needed.
3. Erosion control will be ongoing. A 2" compost erosion blanket will be placed on top of the topsoil prior to planting. Shredded wood check dams, aggregate check dams, perimeter aggregate berms and shredded wood will be the primary perimeter control.
4. Estimated proposed fill is 430,000 Cubic Yards and will be a variety of materials from slides and debris flows within the Columbia River Gorge Scenic Area.
5. See landscape plan for proposed vegetation.

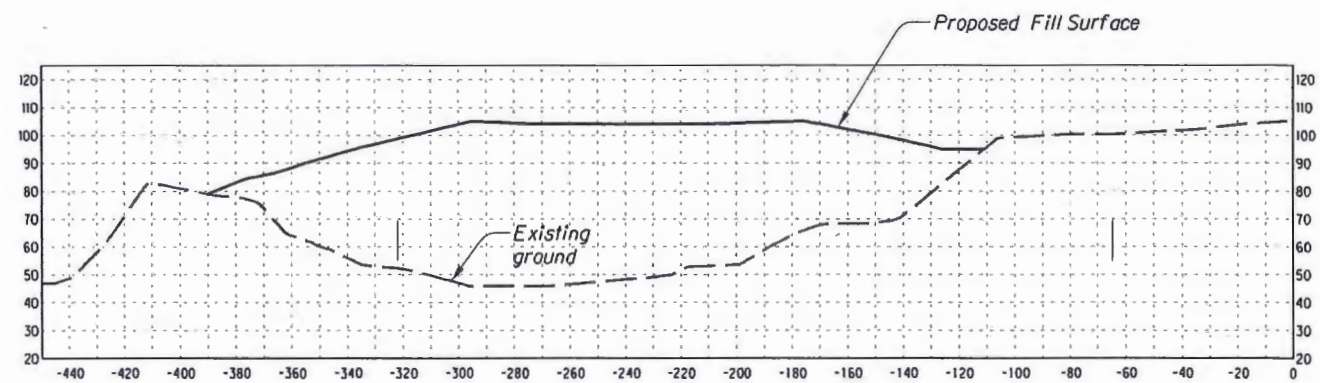
LEGEND	
	Existing Contours (5' intervals)
	Proposed Contours (5' intervals)
	Existing Deciduous Trees
	Existing Coniferous trees
	Wetlands
	Existing Quarry Rd.
	Proposed Quarry Access Rd.
	Section Lines (Sections Sht. 2)

RECLAMATION PLAN

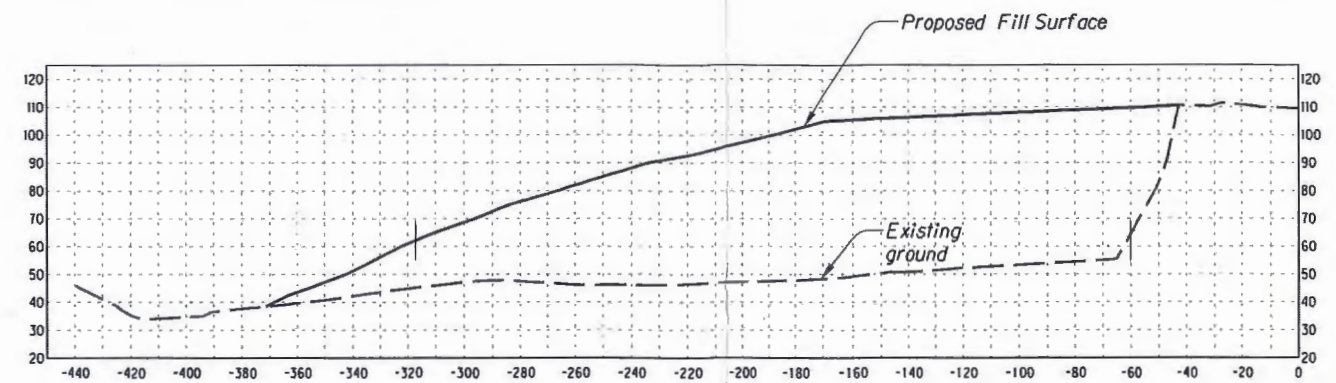
Coopey Quarry ODOT
T 1 N R 5 E Section 14, TL 00600
NSA Application

EXHIBIT
B1A

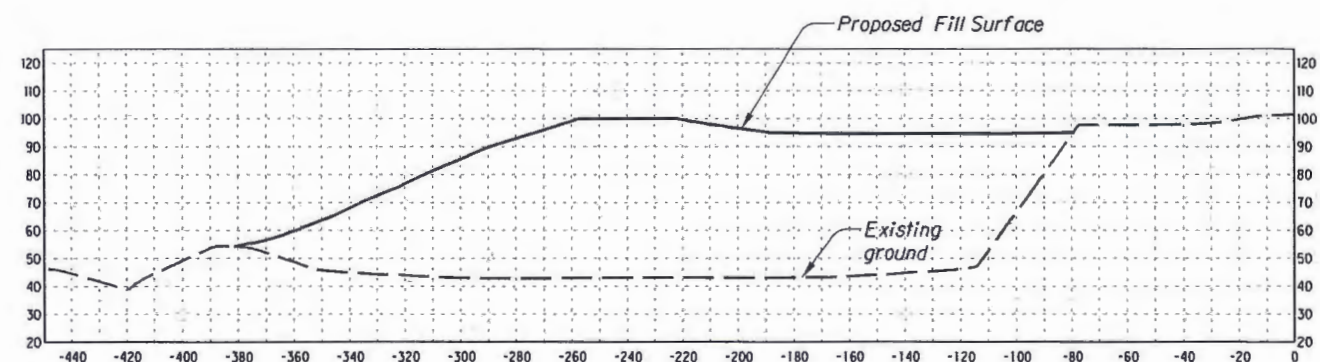
1 of 5



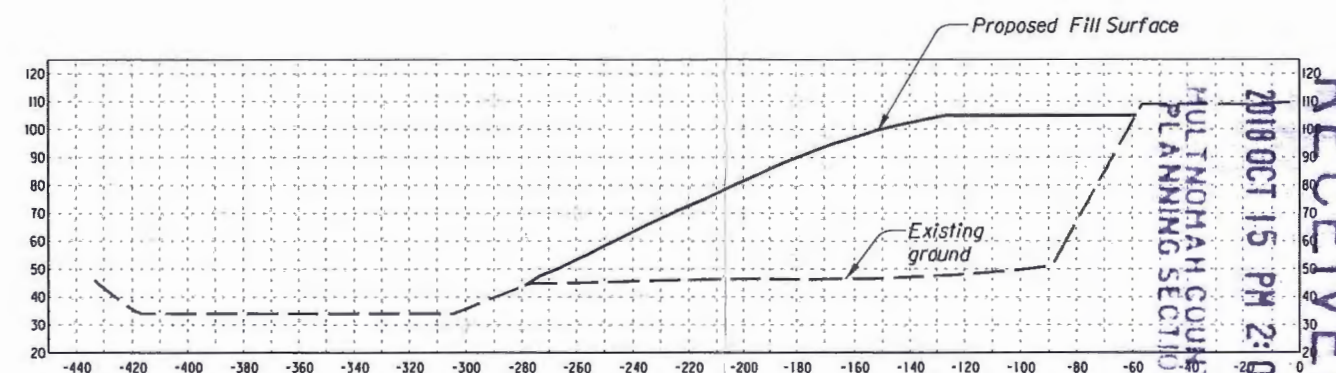
Cross Section A



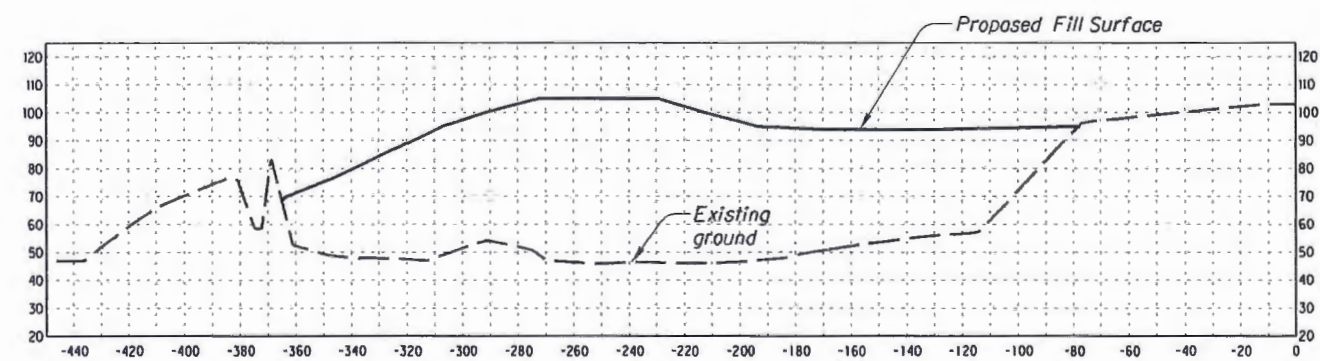
Cross Section D



Cross Section B



Cross Section E



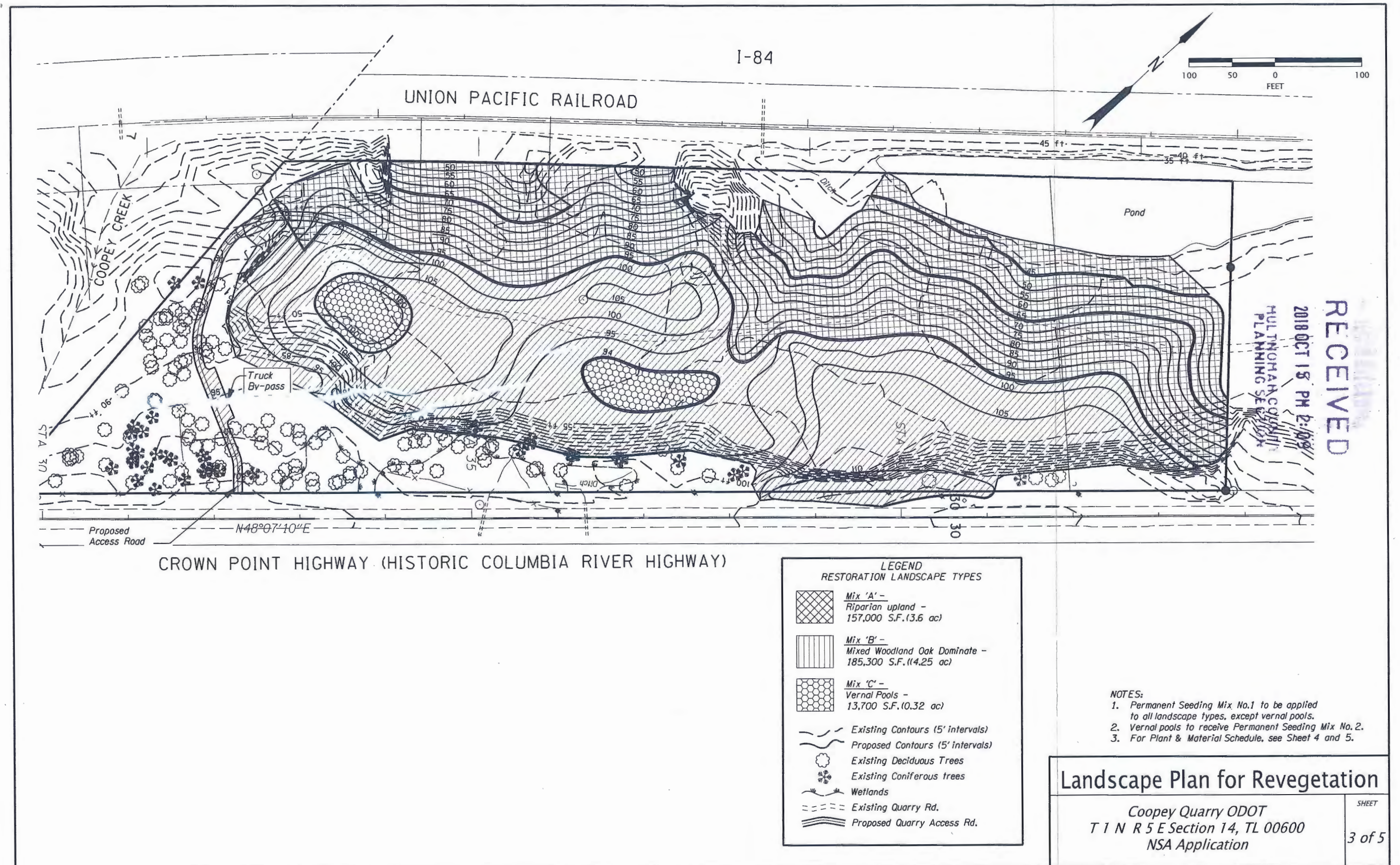
Cross Section C

CROSS SECTIONS

Coopey Quarry ODOT
T 1 N. R 5 E Section 14, TL 00600
NSA Application

SHEET

2 of 5



PLANT and MATERIAL SCHEDULE - Coopey Quarry - Mixed Coniferous Woodland

Plant Type	Botanical Name	Common Name	Size	Spacing	Root Type	Percent Mix	Plant Condition	A.S.N.S.	Layout	Notes	Irrigation	TOTAL
Mix 'A'	<i>Acer circinatum</i>	vine maple	D60L	12' O.C.	D60L Container	5%	Multi-branched		As Staked/Approved	Contract grown		70
	<i>Acer macrophyllum</i>	big leaf maple	D60L	12' O.C.	D60L Container	15%	Single trunk		As Staked/Approved	Contract grown		210
	<i>Alnus rubra</i>	red alder	D60L	12' O.C.	D60L Container	5%	Single trunk		As Staked/Approved	Contract grown		70
	<i>Amelanchier alnifolia</i>	serviceberry	D60L	12' O.C.	D60L Container	5%	Single trunk		As Staked/Approved	Contract grown		70
	<i>Fraxinus latifolia</i>	Oregon Ash	D60L	12' O.C.	D60L Container	5%	Single trunk		As Staked/Approved	Contract grown		70
	<i>Populus trichocarpa</i>	black cottonwood	D60L	12' O.C.	D60L Container	20%	Single trunk		As Staked/Approved	Contract grown		270
	<i>Quercus garyana</i>	Oregon white oak	D60L	12' O.C.	D60L Container	25%	Single trunk		As Staked/Approved	Contract grown		350
	<i>Pseudotsuga menziesii</i>	Douglas fir	D60L	12' O.C.	D60L Container	15%	Single trunk		As Staked/Approved	Contract grown		210
	<i>Thuja plicata</i>	western red cedar	D60L	12' O.C.	D60L Container	5%	Single trunk		As Staked/Approved	Contract grown		70
	Total Trees In Mix A											1,390
	<i>Cornus sericea</i>	red-osier dogwood	D40L	6' O.C.	D40L Container	5%			Groups 5-9	Contract grown		280
	<i>Corylus cornuta</i>	hazelnut	D40L	6' O.C.	D40L Container	10%			Groups 3-5	Contract grown		560
	<i>Halodiscus discolor</i>	ocean spray	D40L	6' O.C.	D40L Container	15%			Groups 3-5	Contract grown		840
	<i>Mahonia aquifolium</i>	Oregon Grape	D40L	5' O.C.	D40L Container	15%			Groups 4-7	Contract grown		840
	<i>Polystichum munitum</i>	sword fern	D40L	5' O.C.	D40L Container	5%			Groups 5-9	Contract grown		280
	<i>Oemleria cerasiformis</i>	osoberry	D40L	6' O.C.	D40L Container	10%			Groups 4-3	Contract grown		560
	<i>Ribes sanguineum</i>	red flowering current	D40L	6' O.C.	D40L Container	10%			Groups 4-3	Contract grown		560
	<i>Rosa gymnocarpa</i>	baldhip rose	D40L	5' O.C.	D40L Container	5%			Groups 5-9	Contract grown		280
	<i>Rubus parviflorus</i>	thimbleberry	D40L	5' O.C.	D40L Container	5%			Groups 5-9	Contract grown		280
	<i>Sambucus cerulea</i>	blue elderberry	D40L	6' O.C.	D40L Container	10%			Groups 5-7	Contract grown		560
	<i>Symphoricarpos albus</i>	snowberry	D40L	5' O.C.	D40L Container	10%			Groups 5-7	Contract grown		560
	Total Shrubs In Mix A											5,600
Mix 'B'	<i>Acer macrophyllum</i>	big leaf maple	D60L	12' O.C.	D60L Container	10%	Single trunk		As Staked/Approved			160
	<i>Amelanchier alnifolia</i>	serviceberry	D60L	12' O.C.	D60L Container	10%	Single trunk		As Staked/Approved			160
	<i>Cornus nuttallii</i>	dogwood	D60L	12' O.C.	D60L Container	5%	Single trunk		As Staked/Approved			80
	<i>Pseudotsuga menziesii</i>	Douglas fir	D60L	12' O.C.	D60L Container	20%	Single trunk		As Staked/Approved			330
	<i>Quercus garyana</i>	Oregon white oak	D60L	12' O.C.	D60L Container	50%	Single trunk		As Staked/Approved			820
	<i>Thuja plicata</i>	western red cedar	D60L	12' O.C.	D60L Container	5%	Single trunk		As Staked/Approved			80
	Total Trees In Mix B											1,630
	<i>Halodiscus discolor</i>	ocean spray	D40L	6' O.C.	D40L Container	20%			Groups 3-9	Contract grown		1,320
	<i>Polystichum munitum</i>	sword fern	D40L	5' O.C.	D40L Container	5%			Groups 5-9	Contract grown		330
	<i>Physocarpus capitatus</i>	ninebark	D40L	6' O.C.	D40L Container	20%			Groups 5-9	Contract grown		1,320
	<i>Oemleria cerasiformis</i>	osoberry	D40L	6' O.C.	D40L Container	5%			Groups 4-3	Contract grown		330
	<i>Ribes sanguineum</i>	red flowering current	D40L	6' O.C.	D40L Container	20%			Groups 4-3	Contract grown		1,320
	<i>Rosa nutkana</i>	nootka rose	D40L	5' O.C.	D40L Container	15%			Groups 5-9	Contract grown		990
	<i>Sambucus cerulea</i>	blue elderberry	D40L	6' O.C.	D40L Container	5%			Groups 3-5	Contract grown		330
	<i>Symphoricarpos albus</i>	snowberry	D40L	5' O.C.	D40L Container	10%			Groups 5-9	Contract grown		660
	Total Shrubs In Mix B											6,600
Mix 'C'	<i>Cornus sericea</i>	red-osier dogwood	D40L	6' O.C.	D40L Container	30%			Groups 5-9			120
	<i>Rubus spectabilis</i>	salmonberry	D40L	6' O.C.	D40L Container	30%			Groups 5-9			120
	<i>Salix spp.</i>	salix spp.	D40L	6' O.C.	D40L Container	40%			Groups 7-12			120
	Total In Shrubs Mix C											360

RECEIVED
2018 OCT 15 PM 2:09
MULTNOMAH COUNTY
PLANNING SECTION

PLANT AND MATERIALS

Coopey Quarry ODOT
T 1 N R 5 E Section 14, TL 00600
NSA Application

SHEET

4 of 5

PLANT and MATERIAL SCHEDULE - Coopey Quarry - Mixed Coniferous Woodland (Cont'd.)												
Plant Type	Botanical Name	Common Name	Size	Spacing	Root Type	Percent Mix	Plant Condition	A.S.N.S.	Layout	Notes	Irrigation	Sheet Number & Quantity
Permanent Seeding Mix No.1	<i>Achillea millefolium</i>	common yarrow	Seed				PLS/Acre	0.14			N/A	
	<i>Anaphalis margaritacea</i>	pearly everlasting	Seed				PLS/Acre	0.08			N/A	
	<i>Asclepias speciosa</i>	showy milkweed	Seed				PLS/Acre	7.36			N/A	
	<i>Aster subspicatus</i>	aster spp.	Seed				PLS/Acre	0.91			N/A	
	<i>Bromus carinatus</i>	mountain brome	Seed				PLS/Acre	16.58			N/A	
	<i>Collinsia grandiflora</i>	giant blue-eyed Mary	Seed				PLS/Acre	1.33			N/A	
	<i>Deschampsia elongata</i>	slender hairgrass	Seed				PLS/Acre	0.87			N/A	
	<i>Elymus glaucus</i>	blue wildrye	Seed				PLS/Acre	4.37			N/A	
	<i>Festuca rubra</i>	red fescue	Seed				PLS/Acre	0.79			N/A	
	<i>Heuchera glabra</i>	piggyback plant	Seed				PLS/Acre	0.31			N/A	
	<i>Lupinus rivularis</i>	riverbank lupine	Seed				PLS/Acre	41.44			N/A	
	<i>Poa secunda</i> var. <i>secunda</i>	Sandberg's bluegrass	Seed				PLS/Acre	0.16			N/A	
	<i>Prunella vulgaris</i>	self-heal	Seed				PLS/Acre	1.30			N/A	
	<i>Rosa gymnocarpa</i>	baldhip rose	Seed				PLS/Acre	2.68			N/A	
	<i>Solidago canadensis</i>	goldenrod	Seed				PLS/Acre	0.10			N/A	
											Acre	7.9
Permanent Seeding Mix No.2	<i>Allium cernuum</i>	nodding onion	Seed				PLS/Acre	4.79			N/A	
	<i>Agrostis exarata</i>	spike bentgrass	Seed				PLS/Acre	0.28			N/A	
	<i>Aster subspicatus</i>	Douglas aster	Seed				PLS/Acre	0.43			N/A	
	<i>Camassia leichtlinii</i>	great Camas	Seed				PLS/Acre	9.90			N/A	
	<i>Carex stipata</i> var. <i>stipata</i>	sawbeaked sedge	Seed				PLS/Acre	1.22			N/A	
	<i>Collinsia grandiflora</i>	giant blue-eyed Mary	Seed				PLS/Acre	1.00			N/A	
	<i>Delphinium nuttallii</i>	Nuttall's larkspur	Seed				PLS/Acre	0.29			N/A	
	<i>Deschampsia elongata</i>	slender hairgrass	Seed				PLS/Acre	0.41			N/A	
	<i>Downingia elegans</i>	elegant calicoflower	Seed				PLS/Acre	0.14			N/A	
	<i>Lupinus rivularis</i>	riverbank lupine	Seed				PLS/Acre	19.50			N/A	
	<i>Elymus glaucus</i>	blue wildrye	Seed				PLS/Acre	6.58			N/A	
	<i>Plagiobothrys figuratus</i>	fragrant popcorn flower	Seed				PLS/Acre	0.51			N/A	
	<i>Plectritis congesta</i>	sea blush	Seed				PLS/Acre	0.99			N/A	
	<i>Poa secunda</i> var. <i>secunda</i>	Sandberg's bluegrass	Seed				PLS/Acre	0.49			N/A	
	<i>Saxifraga oregana</i>	Oregon saxifrage	Seed				PLS/Acre	2.76			N/A	
Total In Mix											Acre	0.32

RECEIVED
2018 OCT 15 PM 2:09
MULTNOMAH COUNTY
PLANNING SECTION

PLANT AND MATERIALS

Coopey Quarry ODOT
T 1 N R 5 E Section 14, TL 00600
NSA Application

5 of 5