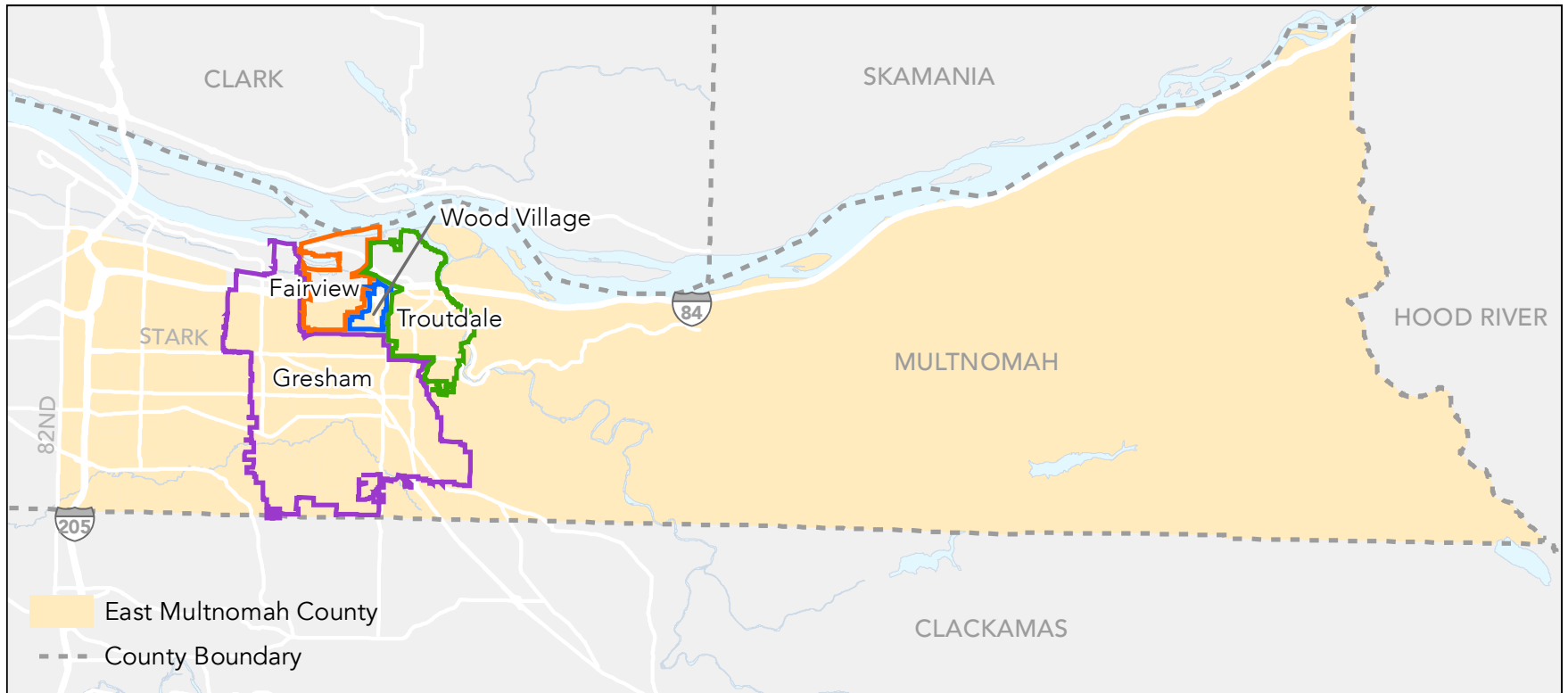


The State of Jobs, Affordability, and Opportunity in East Multnomah County

ECONorthwest
ECONOMICS • FINANCE • PLANNING

East County by the Numbers



312,025

East County Population (2013-2017)

26

Percent of the Population that is
Non-White, Non-Hispanic

99,200

East County Jobs (east of 205)

20

Percent of Households Living in
Poverty (2013-2017)

61

Percent of Renter Households that
Spend more than 30 Percent of
Income on Housing

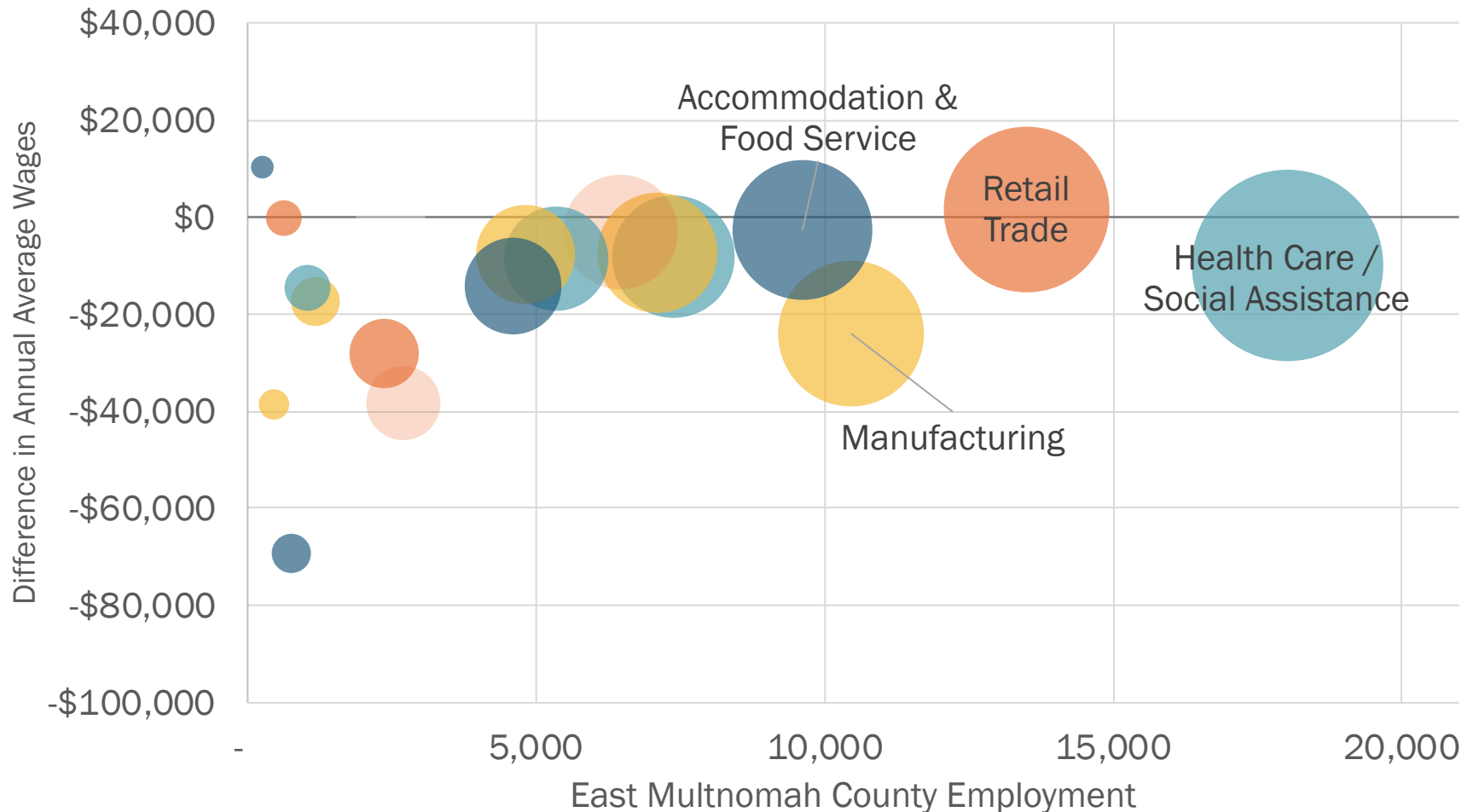
2,079

Number of transportation-related
211 requests in East County in
2018

Behind the Numbers

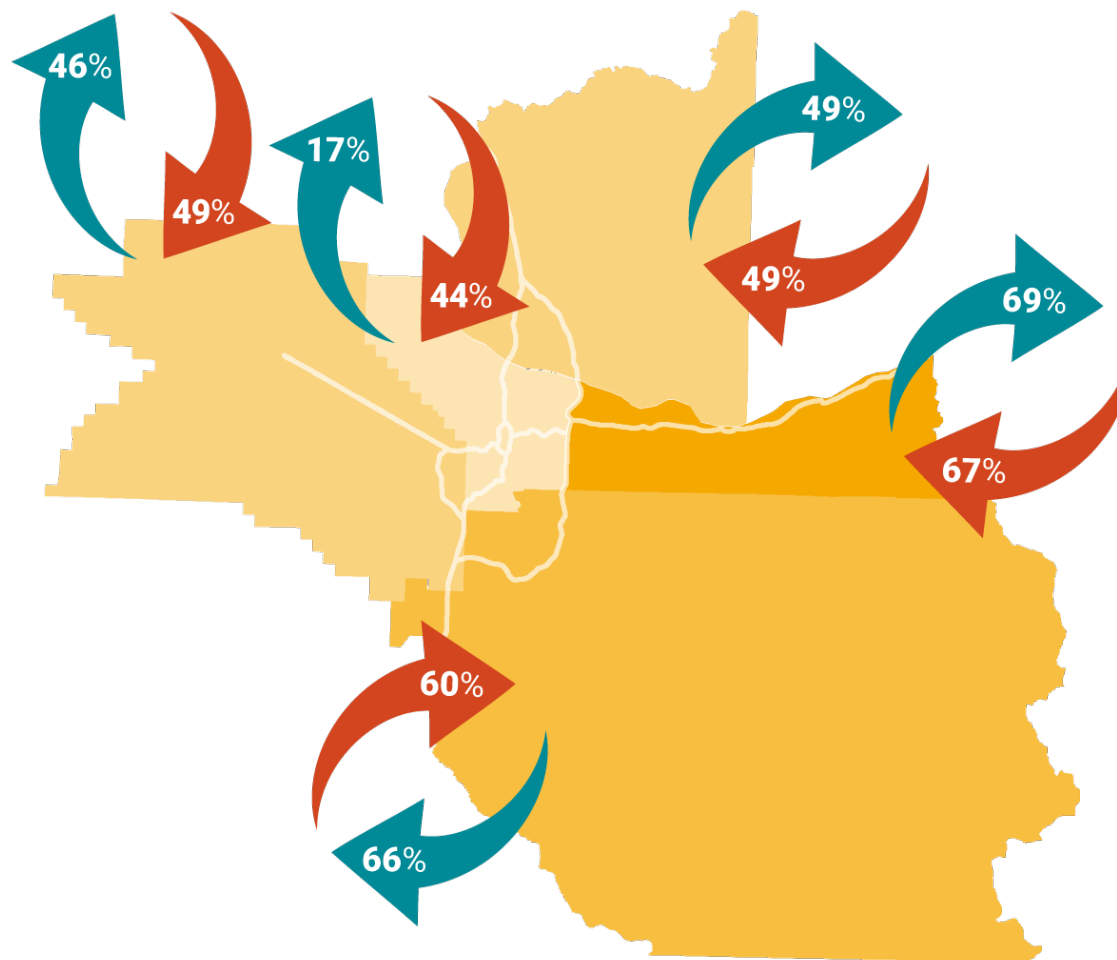
East County Wages are Lower

East Multnomah County Employment and Difference between Tri-County and East Multnomah County Average Wages, 2017



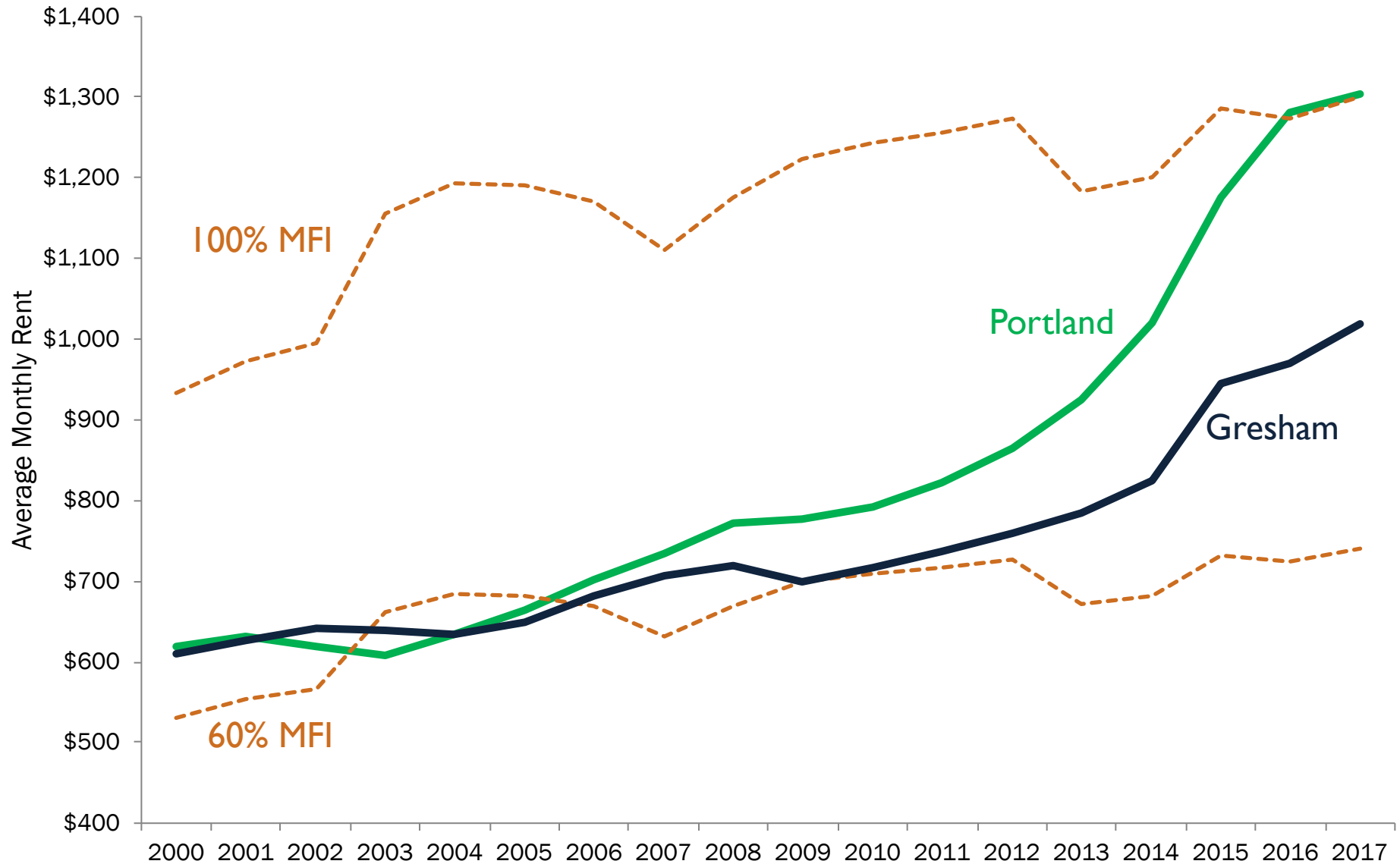
East County residents don't work in East County

Place of work/residence as a share of workers/jobs, 2016

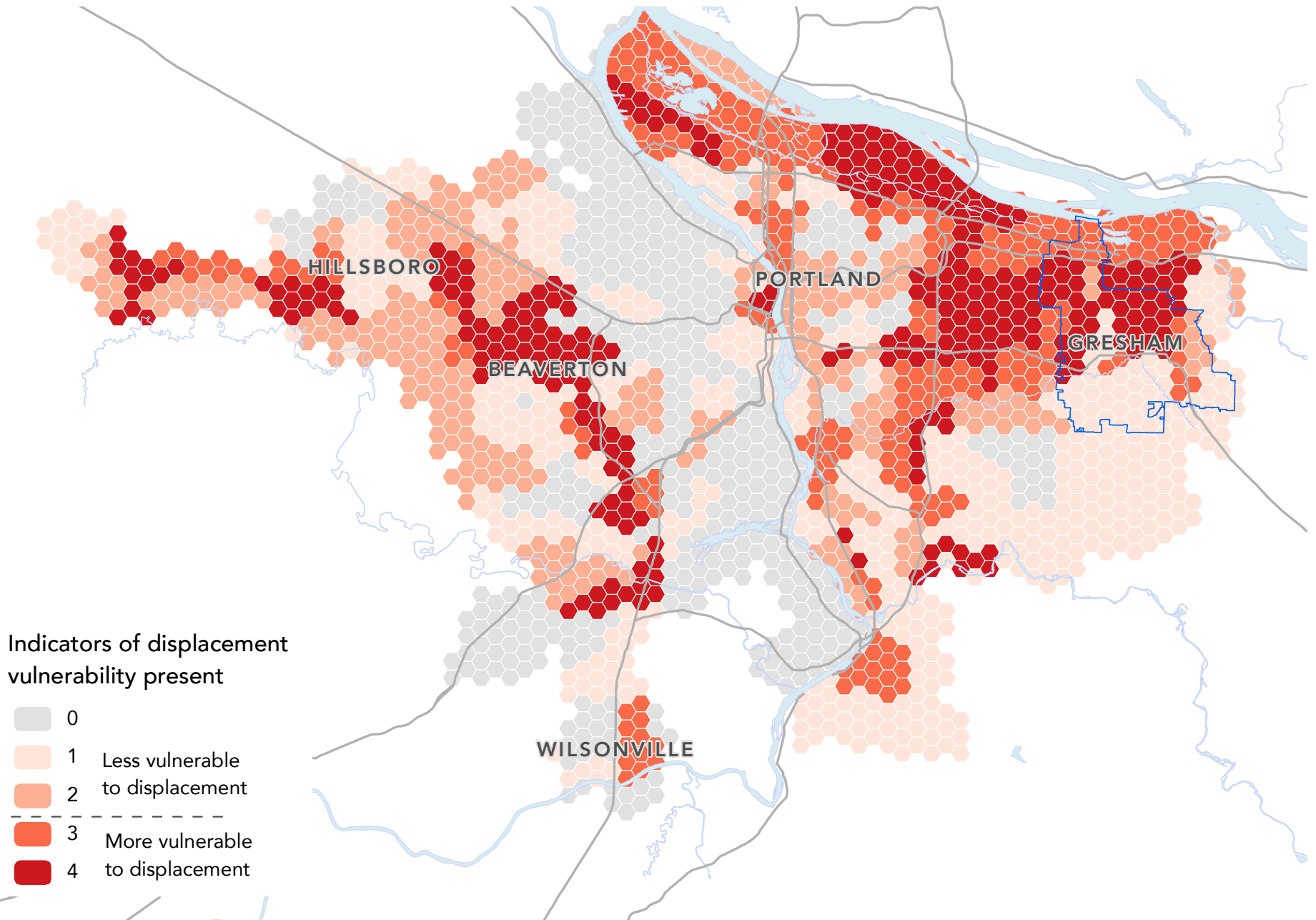


One Bedroom Apartment Affordability

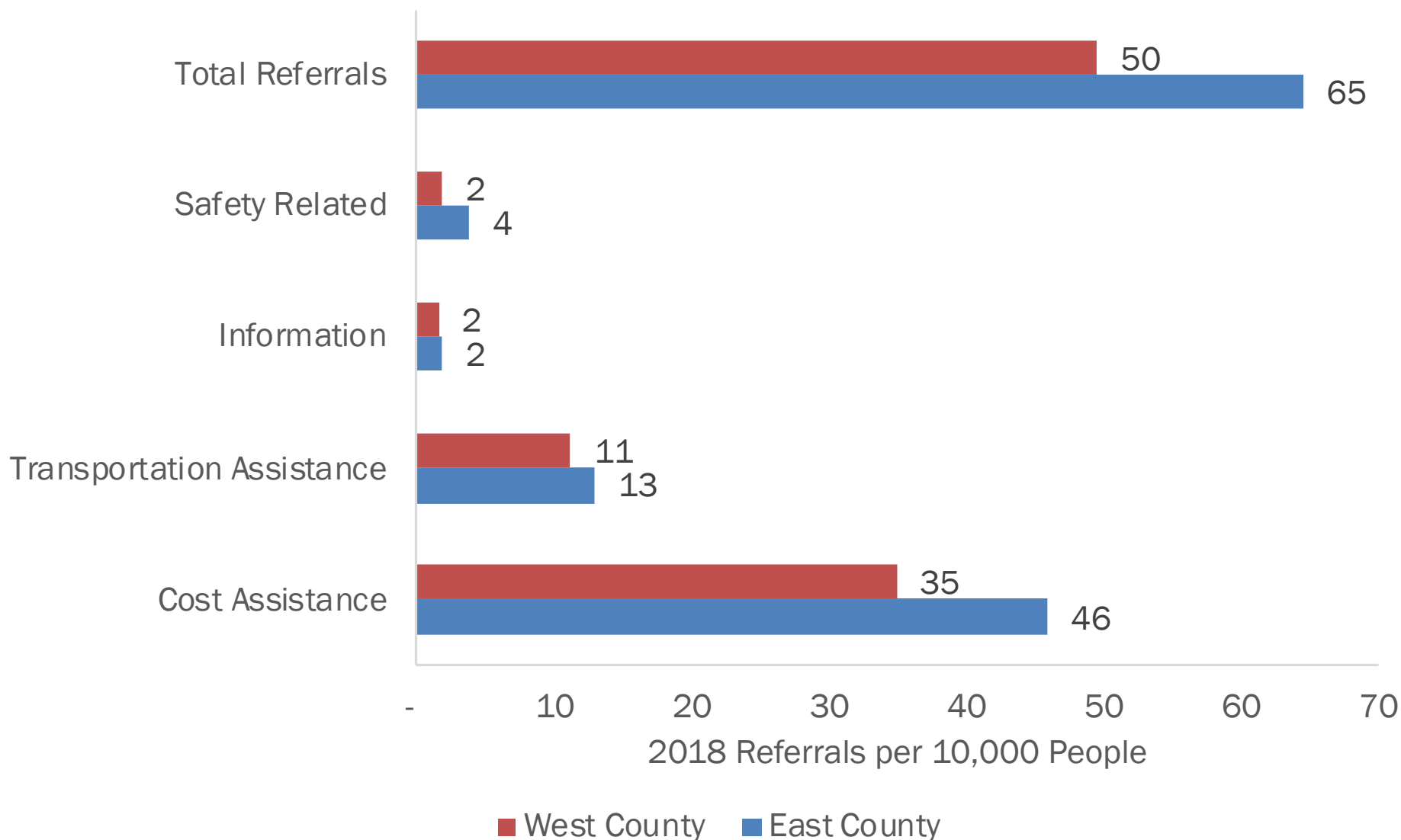
Average Market Rent vs. MFI



Portland Vulnerability to Displacement Index - 2016



2018 Transportation-Related 211 Requests



Source: 2018 211-info referrals; 2013-2017 Census ACS total population

Note: 211 data are tallied by Zip Code, population is tallied by Census Tract

Transportation best practices for smaller cities on the edge of the MSA:

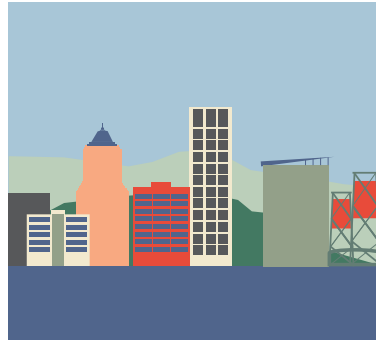
- Increase point-to-point service to encourage more transit ridership
- Encourage the decentralization of job centers to alleviate traffic congestion and downtown office rents
- Introduce well-calibrated road pricing to reduce congestion

ECONorthwest

ECONOMICS • FINANCE • PLANNING



Eugene



Portland



Seattle



Boise