



MULTNOMAH COUNTY

Cornelius Pass Road Project

May 13, 2020

Multnomah County
Bicycle and Pedestrian
Citizen Advisory Committee

Mike Pullen
Multnomah County
Transportation

Agenda

- NW Cornelius Pass Road Safety Improvements
 - Project description
 - Schedule and traffic plans
 - Issues for Bicyclists and Pedestrians
 - Response to Issues
- Questions / Comments



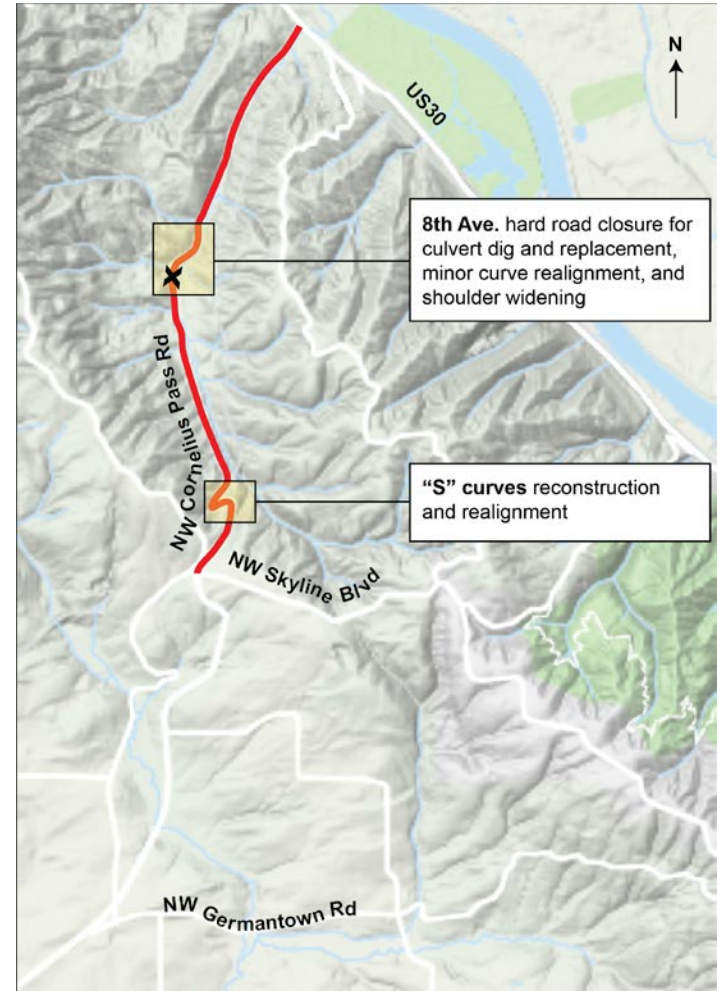
Project Description

- Safety improvements on Cornelius Pass Rd. between Highway 30 and NW Kaiser Rd.
- Construction started in 2019: all work south of Skyline is complete
- County has \$5.65M from state for design, right of way and construction



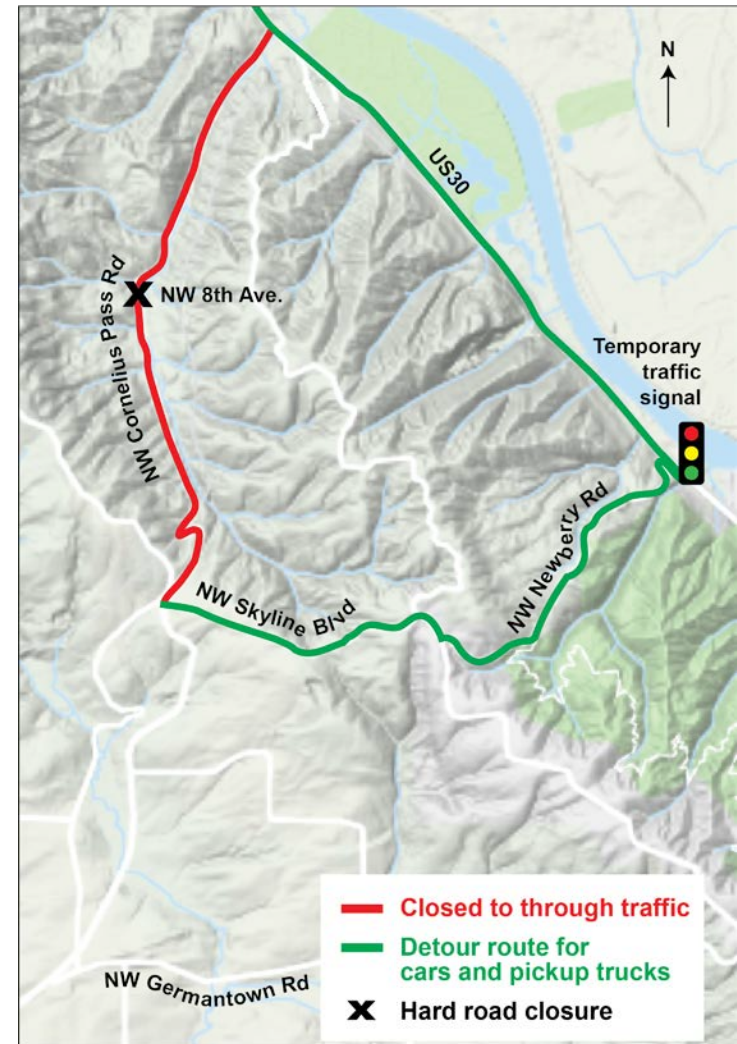
2020 Scope and Schedule

- Complete safety improvements begun in 2019
- In 2020, all work is between Hwy. 30 and NW Skyline Blvd.
- Scope:
 - Realign 8th Ave. curve (replace culvert)
 - Realign S curve
- Road Closure:
 - Late June to Early Sept. (will confirm dates in May)



Traffic Plan – Cars and Pickup Trucks

- Shorter detour than 2019
- Southbound:
 - Hwy. 30 to NW Newberry Rd. (temp signal)
 - Newberry to Skyline
 - Skyline to Cornelius Pass
 - Cornelius Pass south to Hwy. 26
- Hard closure near NW 8th due to culvert work



Traffic Plan – Trucks

- Same detour as 2019
- No alternate truck route between Skyline & Hwy. 30
- Southbound:
 - Hwy. 30 to I-405 S
 - I-405 S to Hwy. 26 W
- Hazardous Loads:
 - I-405 S to I-5 S
 - I-5 S to Hwy. 217 N
 - Hwy. 217 N to Hwy. 26

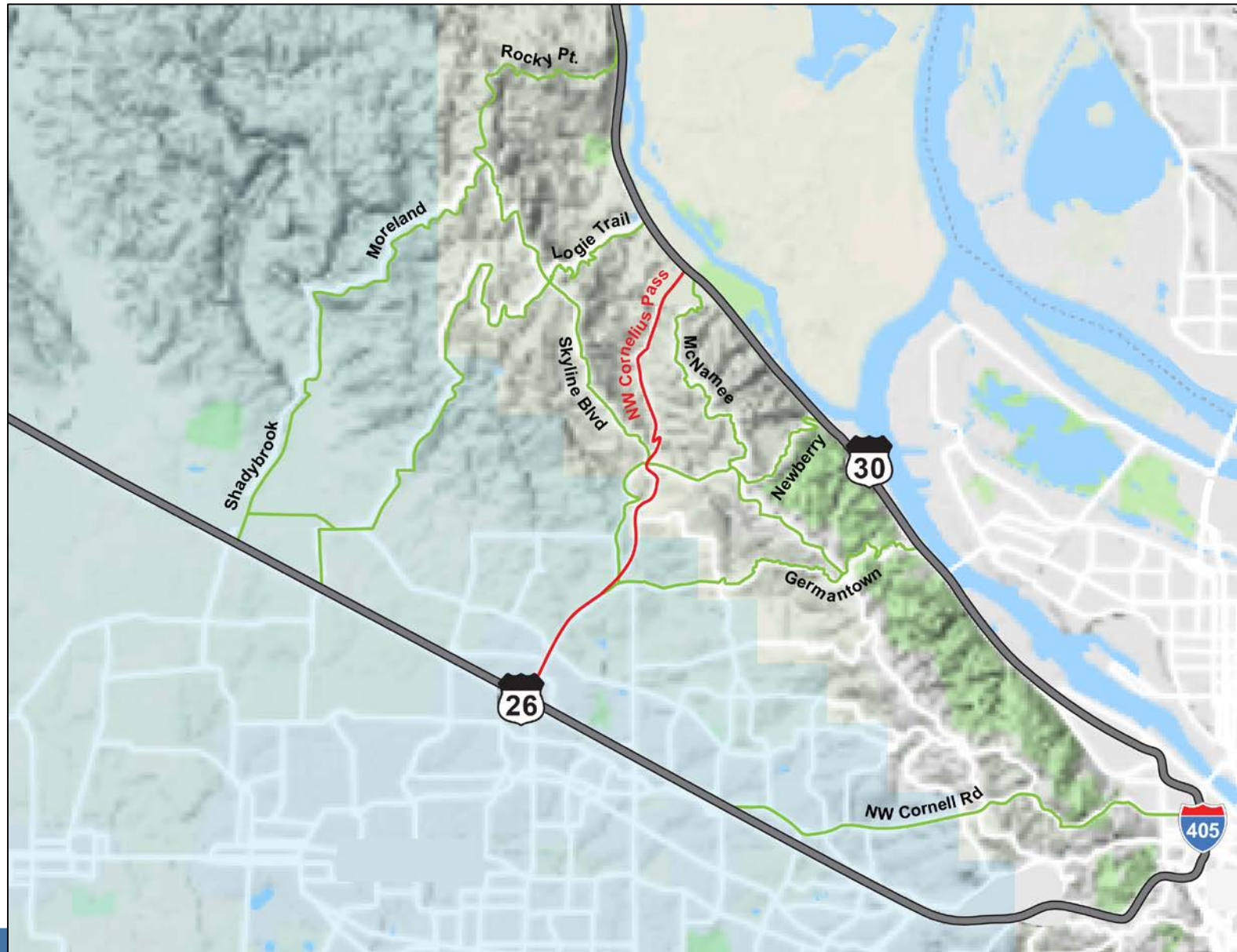


Traffic Safety

- **No** conflicts with:
 - Other agency projects (including I-405 work)
 - Intel expansion
- **Stopping illegal trucks:**
 - Flaggers & 4-way stop at Skyline/Cornelius Pass (safest turnaround)
 - Will likely close upper NW Logie Trail Rd (safety)
 - Signage
 - Sheriff's Patrols



NW CORNELIUS PASS ROAD // West Hills Side Roads



Bicyclist and Pedestrian Issues

- West hills roads like Skyline Blvd. are popular with recreational cyclists
- Increased safety risk on side roads due to higher traffic volumes during closure; drivers not familiar with terrain
- Side roads are narrow, steep, winding, with poor sight distance and lack of shoulders
- Illegal truck trips on west hill roads endanger bikes/peds
- Will Covid-19 reduce traffic volumes in 2020?
- Other issues?



County responses:

- Installed bike signs on side roads
- Pothole repair, vegetation trimming on side roads
- Coordinating with 1st responders
- Traffic: Alert public via outreach, social media, mailing, media
- Bicyclists: Outreach to cyclists, encourage recreational cyclists to avoid area near Corn Pass, recommend alternate sites (such as Sauvie Island)



Key Messages

- Rural roads in West Hills are popular with recreational cyclists.
- During the road closure, these same roads will have more traffic than normal.
- Road users should be extra alert for other traffic, especially cyclists.
- Recreational cyclists may prefer to ride in less congested areas further from Cornelius Pass Road



Outreach to:

- Bike Portland
- MC Bike-Ped CAC
- Street Trust
- Velo Club
- Others?

Questions or Concerns?

For More Information: multco.us/cornpass

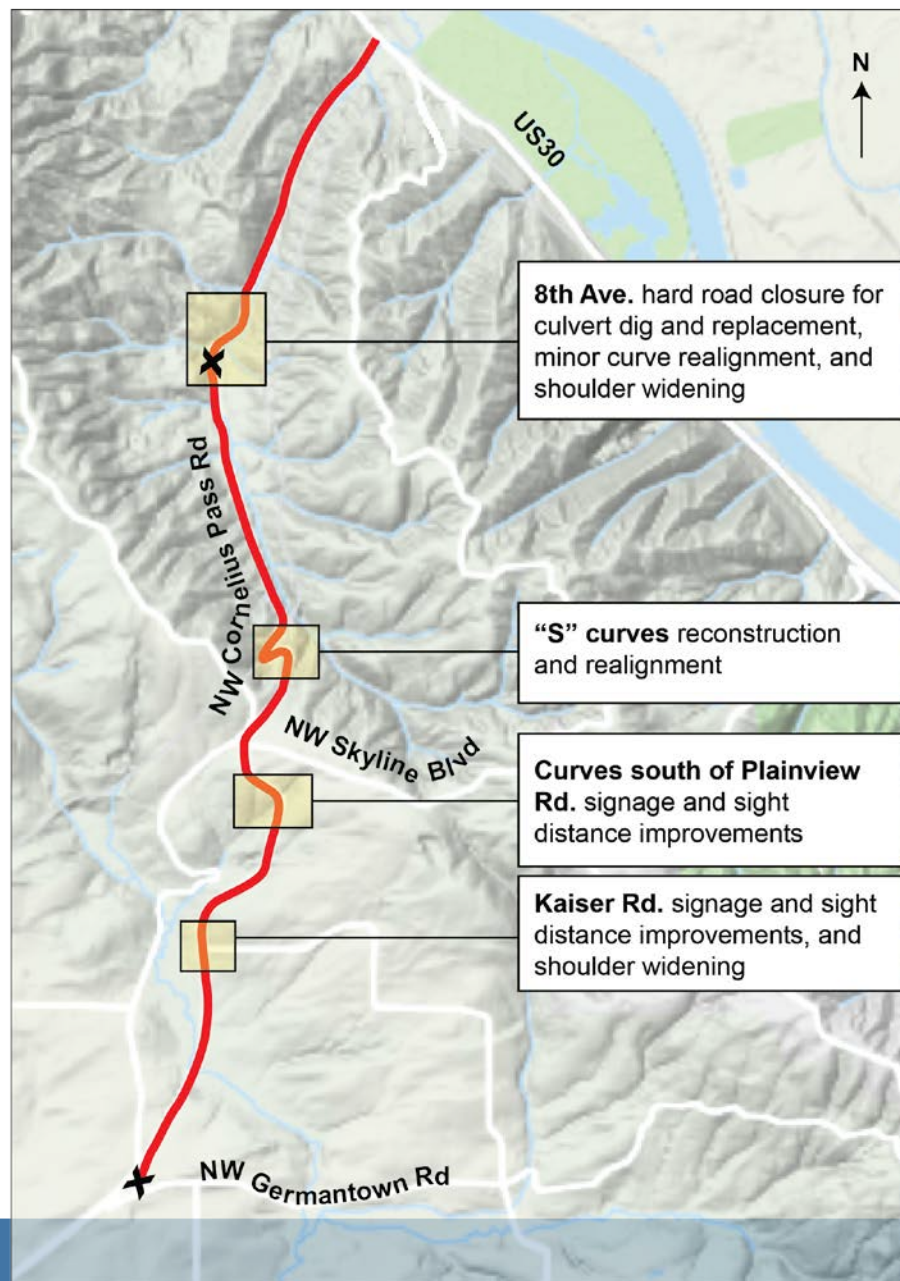


Extra Slides

(use if needed)



NW CORNELIUS PASS ROAD // Project Details and Locations



NW CORNELIUS PASS ROAD // Project Overview

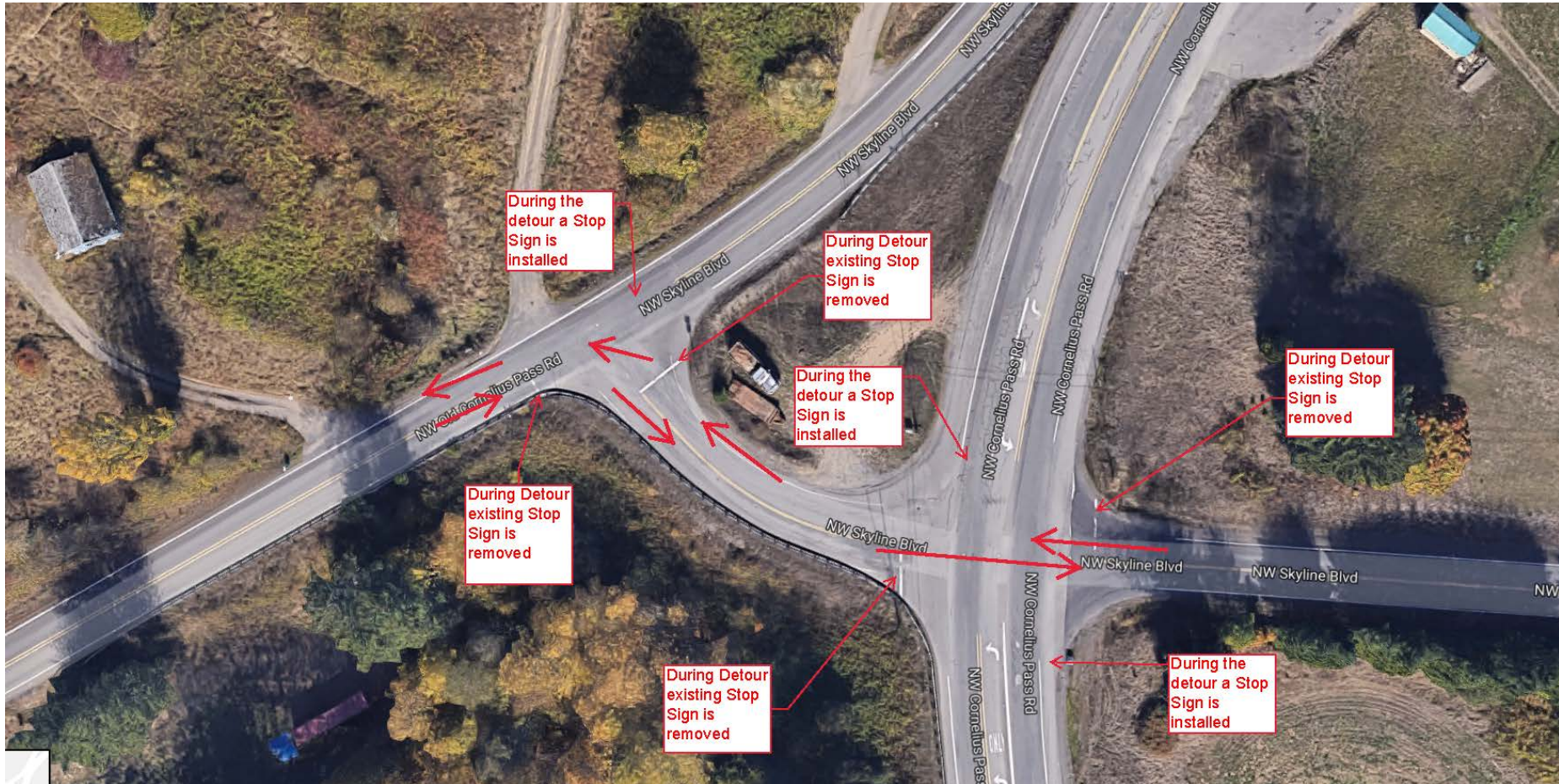


Corridor-Wide Improvements

- Signage
- Vehicle pullouts
- Barriers and guardrails
- Reduce pavement drop-offs with gravel shoulder wedge



Temporary stop sign changes at Cornelius Pass/Skyline/Old Cornelius Pass intersection



NW CORNELIUS PASS ROAD //

Location of hard road closure at north end

