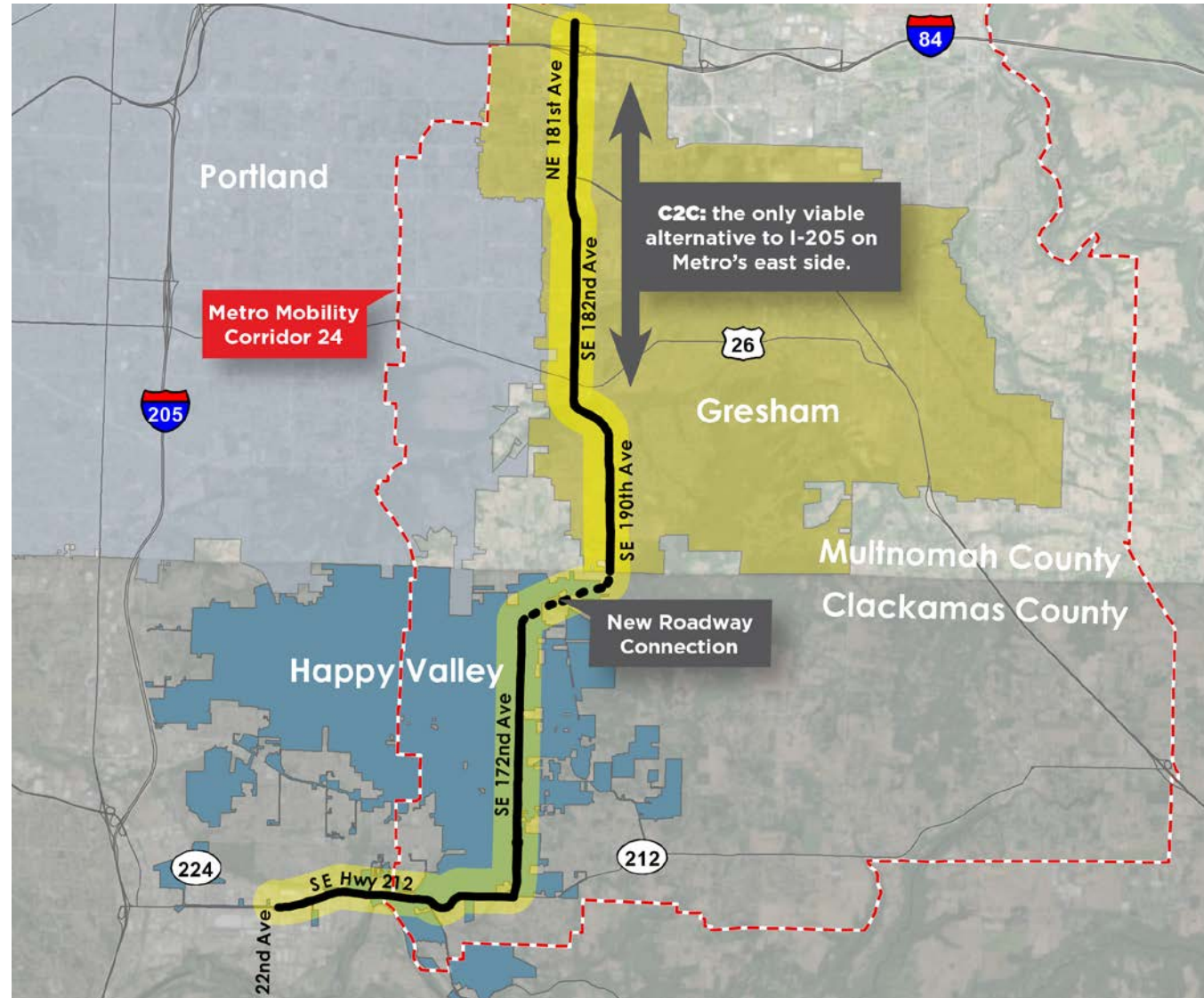


Clackamas to Columbia Corridor (C2C) Plan





C2C Corridor

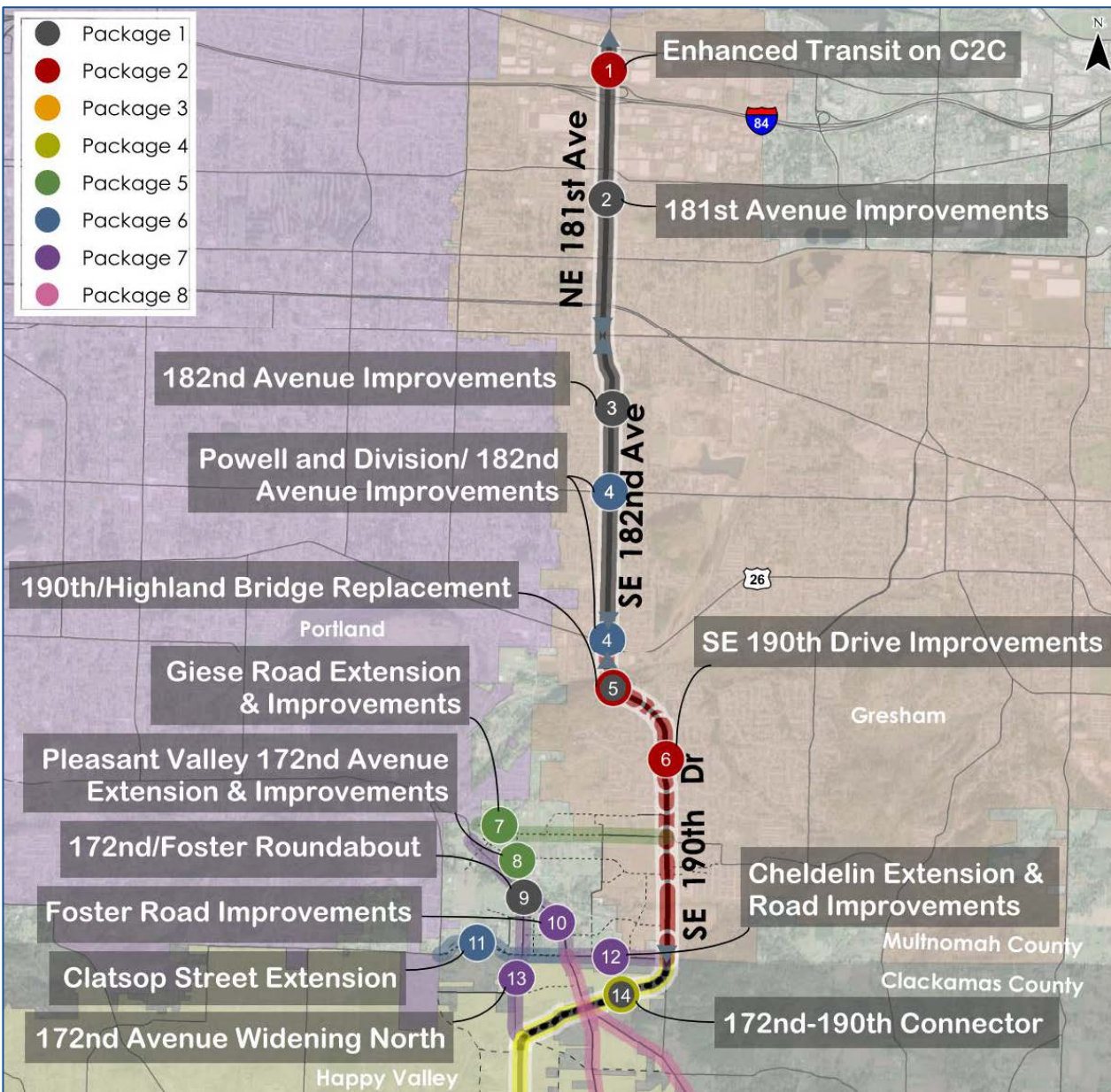




Project Objectives

- Identify sequencing and phasing of transportation investments along the corridor.
- Develop a coordinated, consistent set of policy and project recommendations.
- Seek approval by elected officials to agree on prioritizing future projects in the C2C corridor.
- Align projects to funding opportunities.

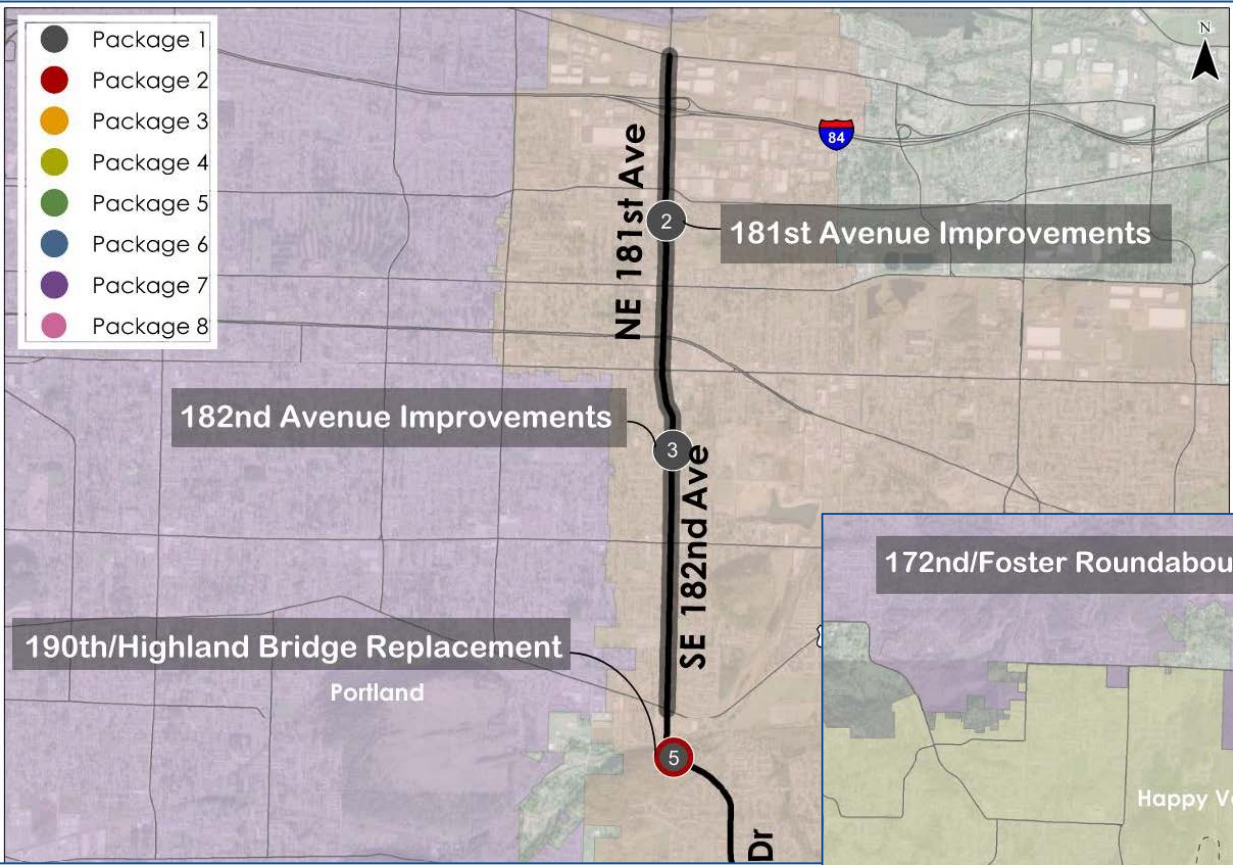
Investment Packages



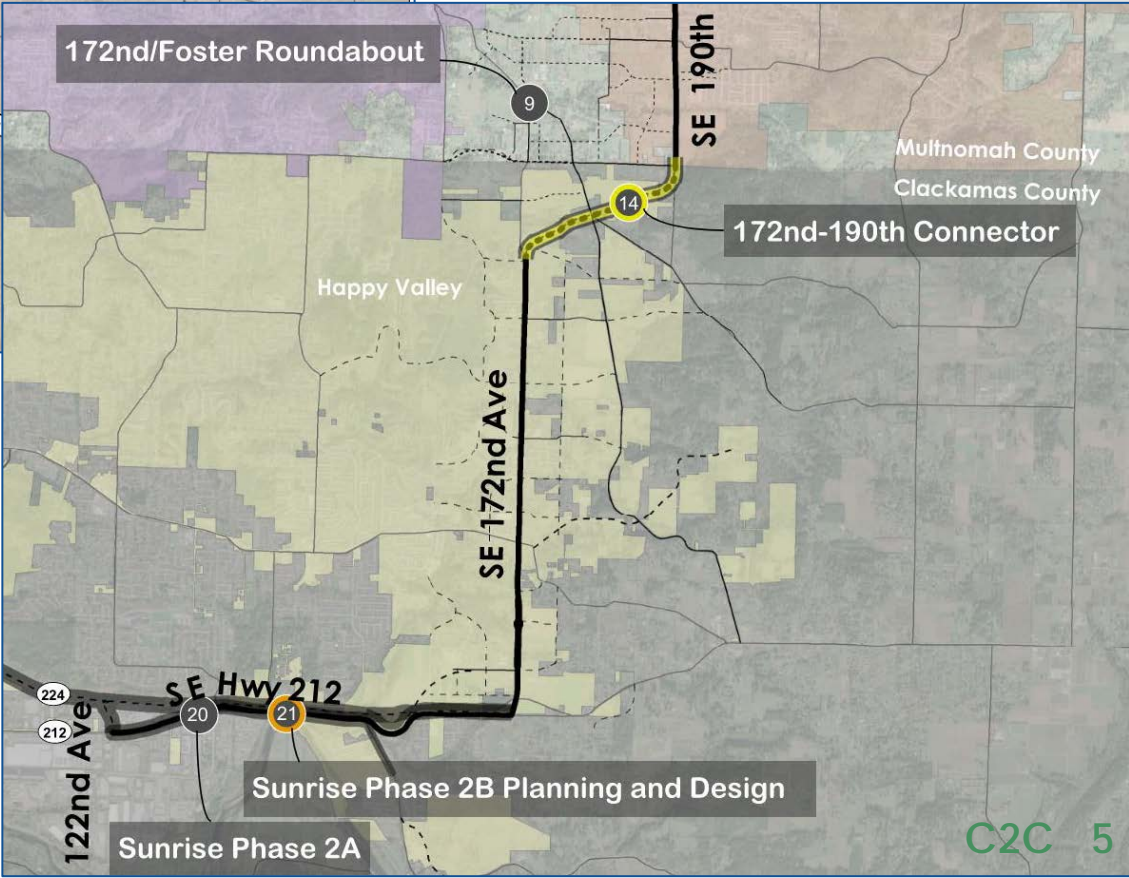
Package 1

Metro Regional Investment Measure Projects

Sequence: 2, 3, 5, 9,
20, 14/21



- 2, 3, and 5 before the connector is in-place and increases traffic along the corridor
- 9 and 20 could also come before 14 to provide safety and mobility improvements
- 21 can occur at the same time as 20 if funding were available

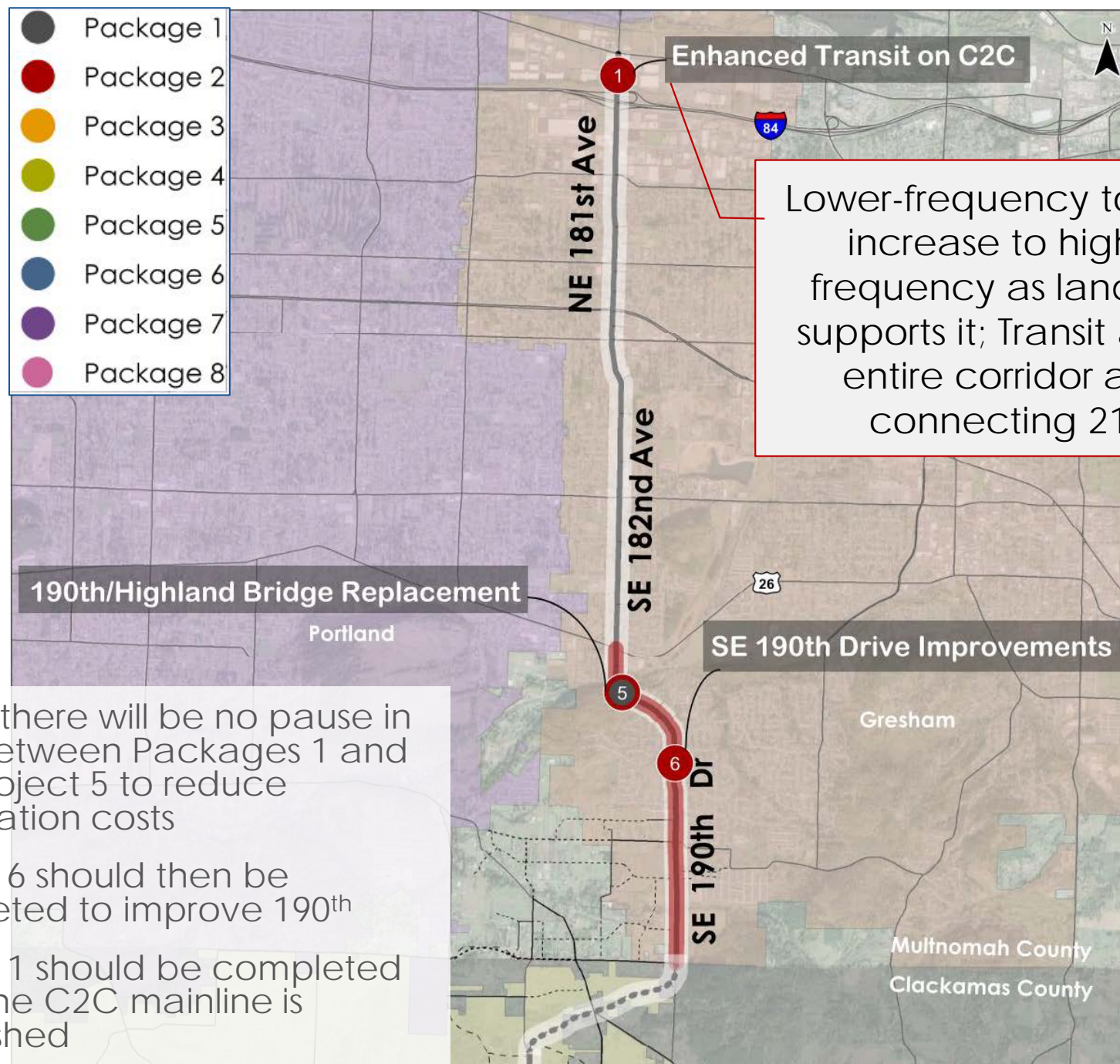


Package 2

C2C Mainline Capital Projects

Sequence: 5, 6, 1

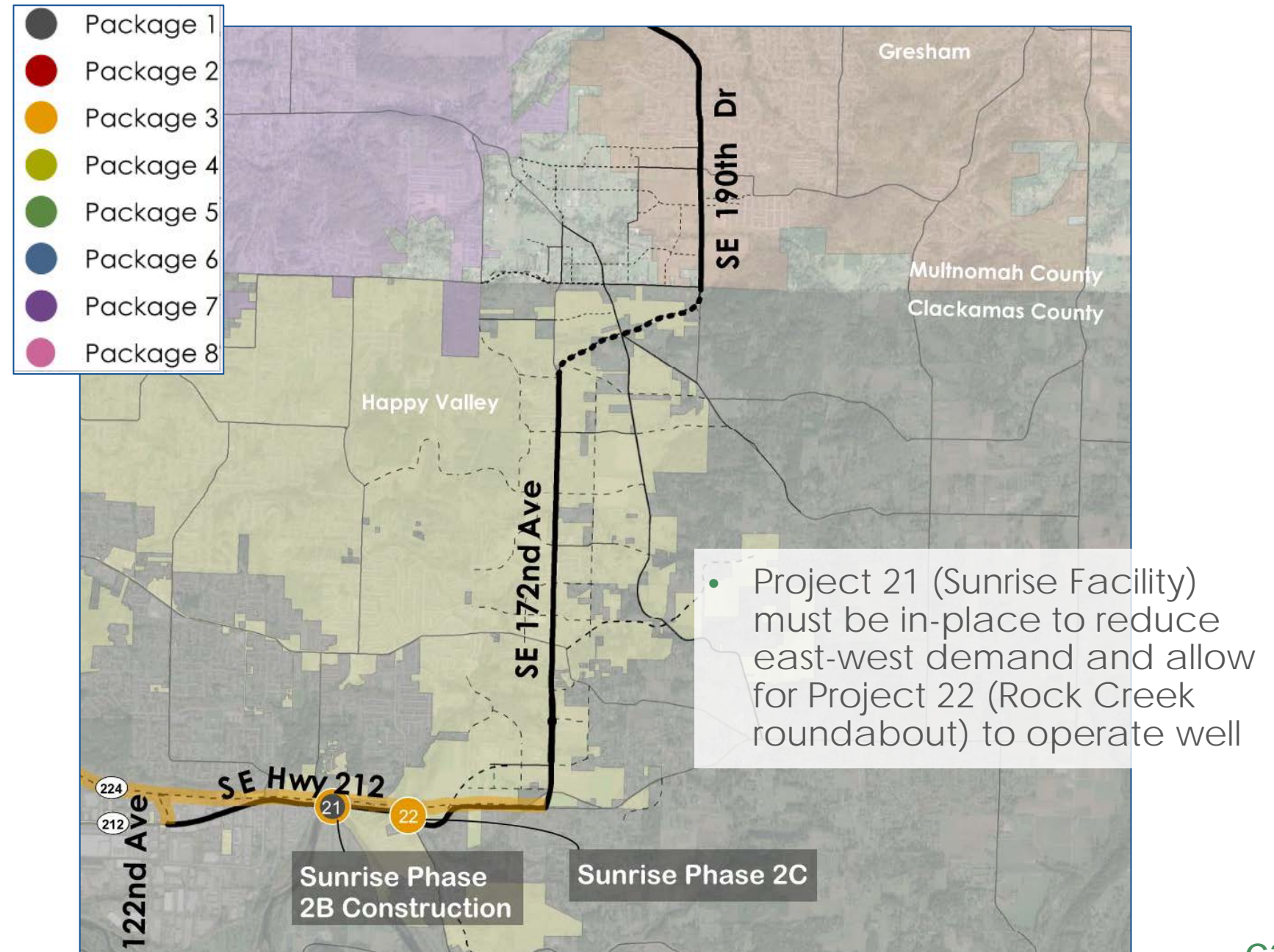
- Ideally there will be no pause in work between Packages 1 and 2 for Project 5 to reduce mobilization costs
- Project 6 should then be completed to improve 190th
- Project 1 should be completed once the C2C mainline is established



Package 3

High Score Capital Projects

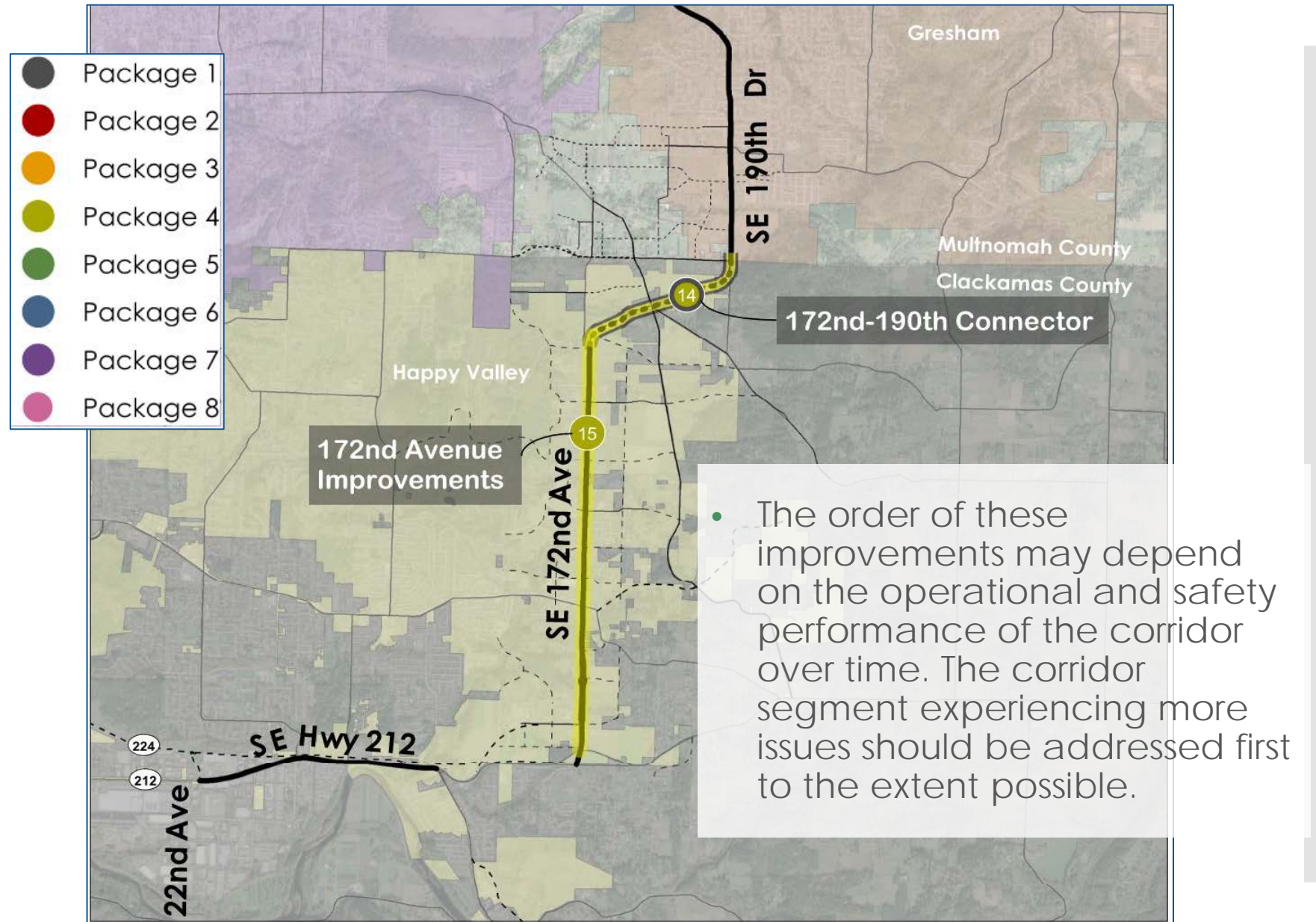
Sequence: 21, 22



Package 4

C2C Mainline Development Projects

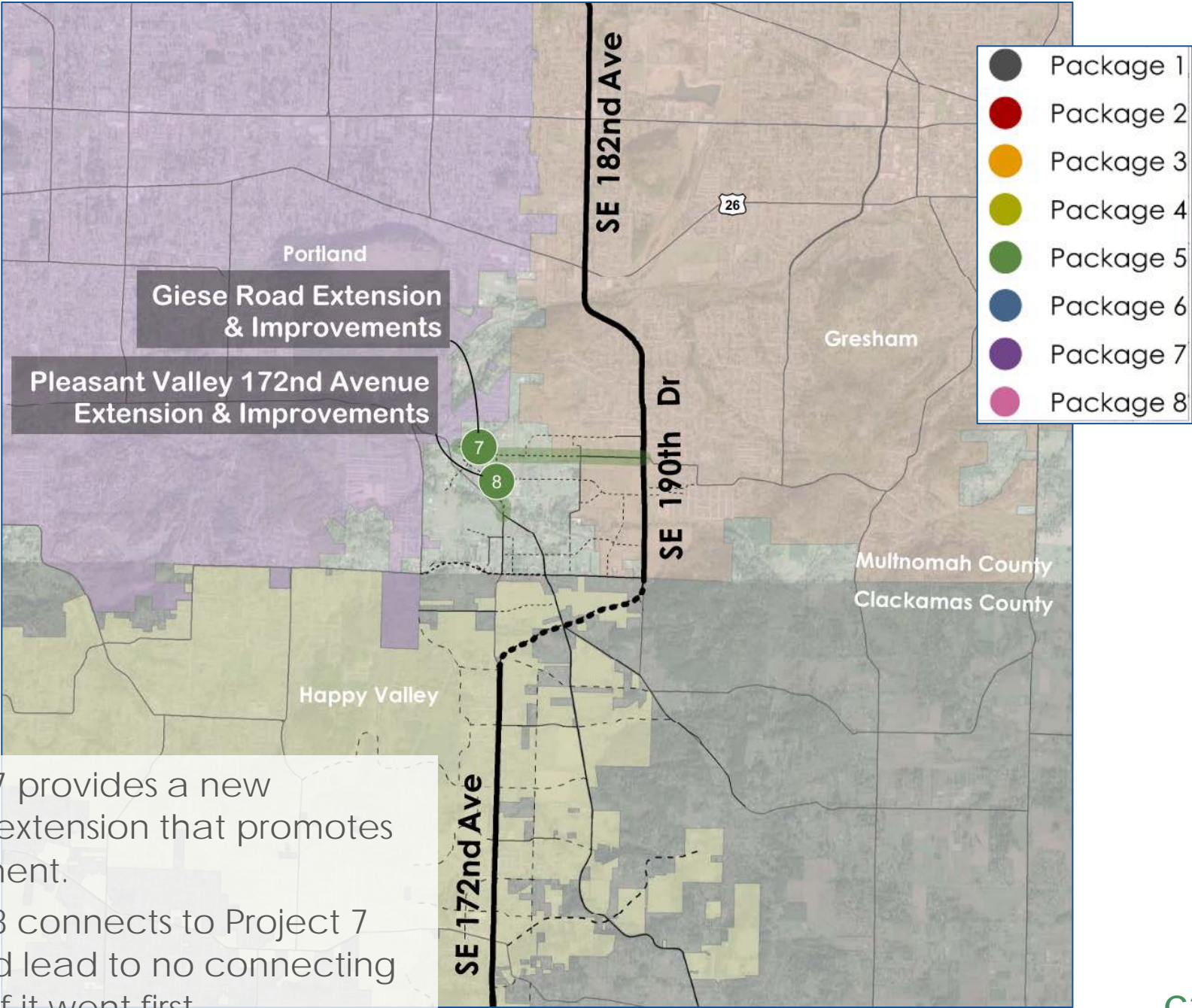
Sequence: 14, 15



Package 5

Medium Score Capital Projects

Sequence: 7, 8



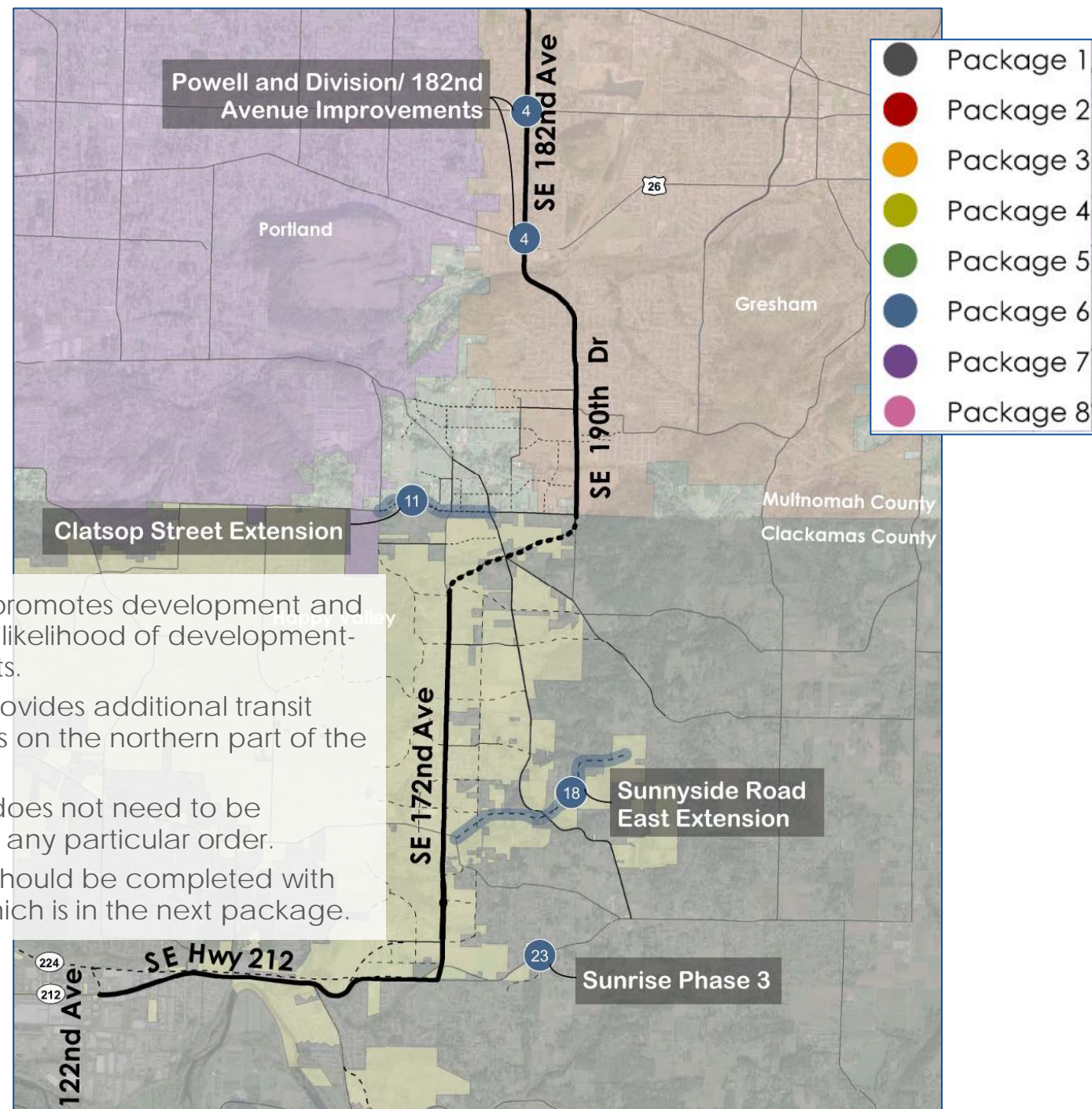
- Project 7 provides a new roadway extension that promotes development.
- Project 8 connects to Project 7 and would lead to no connecting roadway if it went first.

Package 6

Low Score Capital Projects

Sequence: 18, 4, 23, 11

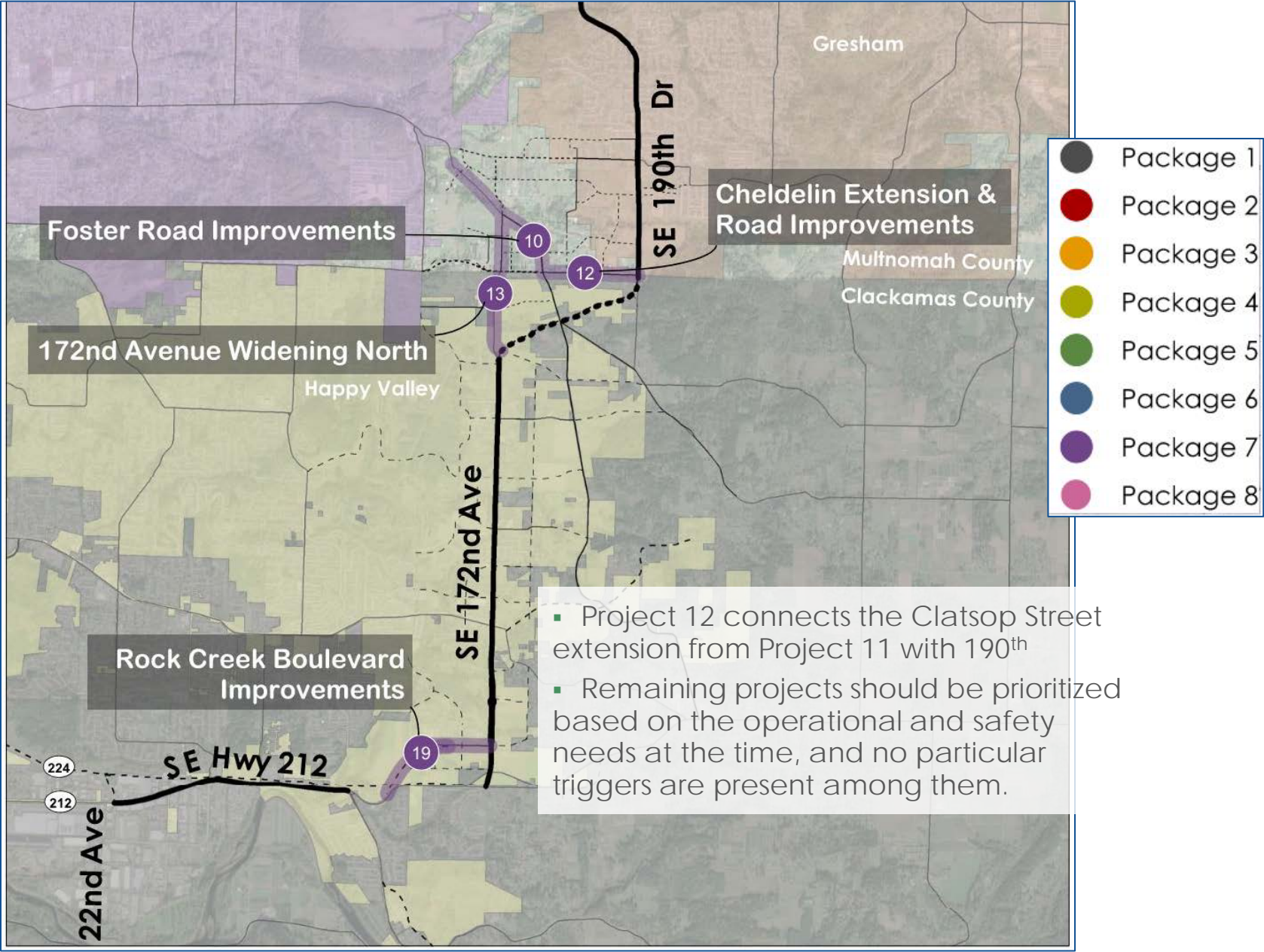
- Project 18 promotes development and increases the likelihood of development-driven projects.
- Project 4 provides additional transit improvements on the northern part of the corridor.
- Project 23 does not need to be completed in any particular order.
- Project 11 should be completed with Project 12, which is in the next package.



Package 7

High Score Development Projects

Sequence: 12, 10, 13, 19



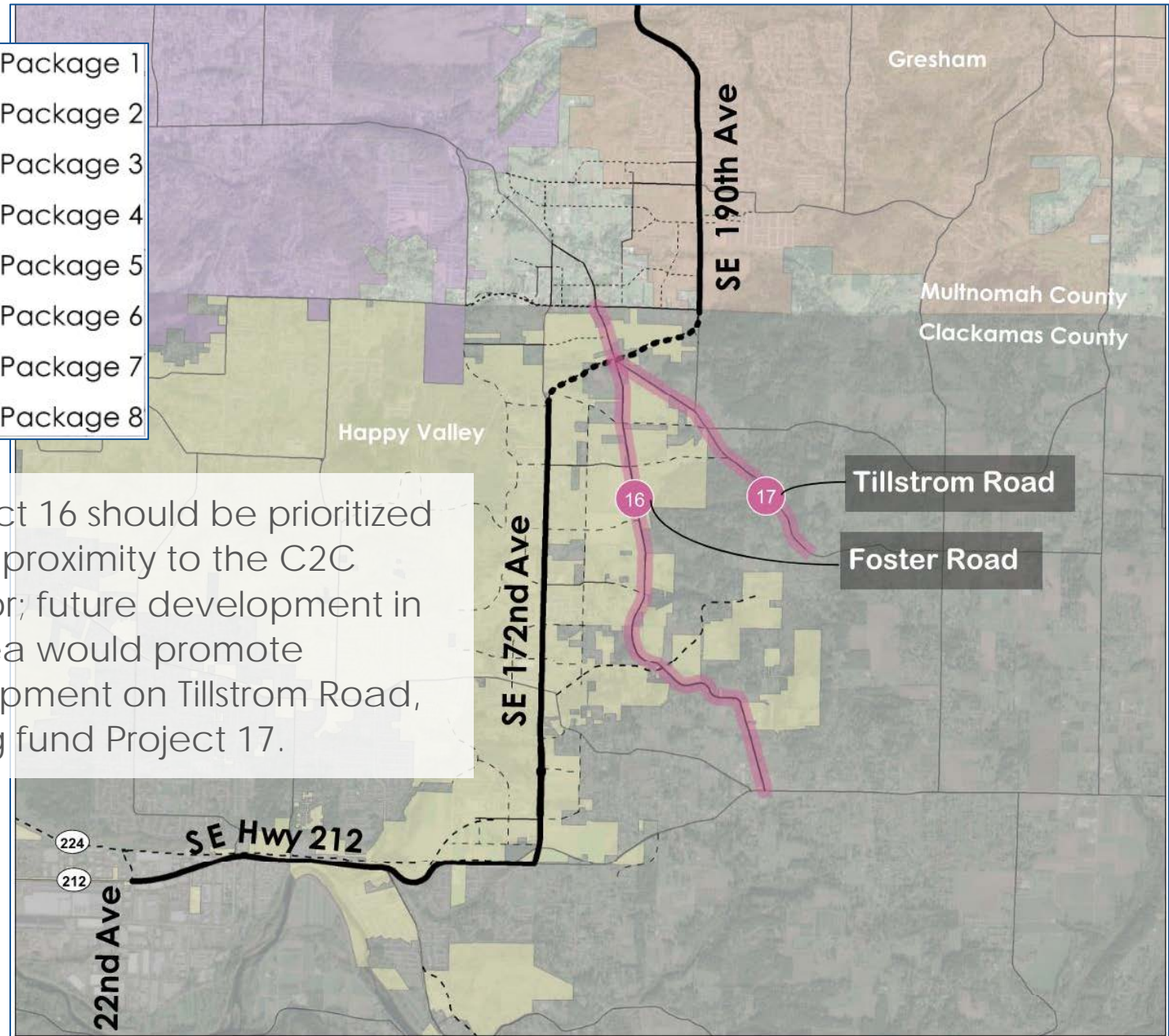
Package 8

Low Score Development Projects

Sequence: 16, 17

- Package 1
- Package 2
- Package 3
- Package 4
- Package 5
- Package 6
- Package 7
- Package 8

- Project 16 should be prioritized due to proximity to the C2C Corridor; future development in the area would promote development on Tillstrom Road, helping fund Project 17.



Funding Strategies and Timelines

Plan includes information about available funding sources, and which are capable of fully or partially funding the different projects



Timelines are dependent on funding availability, but generally:

Near-term packages include 1 and 2, and are anticipated in the next 15 years

Mid-term packages are 3 and 4, and are anticipated in the next 10-20 years

Long-term packages are packages 5, 6, 7, and 8, and are anticipated in 15 or more years

Plan and Policy Amendments

- Identifies project revisions and incorporations for each jurisdiction and Metro
- Discusses development review procedures
- Identifies process for acceptance of the C2C Corridor Plan by all 4 partner agencies, including:
 - Adoptions of resolution by June 30, 2021
 - Incorporation of Plan as applicable within each agency's next TSP update

Online Open House

- Open house ran September 8th -15th
 - <https://openhouse.jla.us.com/c2c>
- **About 50** visits in the most-recent round, with **255** unique visitors between both rounds of outreach
- Most traffic came from mid-July to mid-August, most visits in one day was 36 people, on August 5.
- Most visitors (by IP address) were from **Portland** (40%), **Gresham** (23%), **Happy Valley** (4%).

Online Open House

- Findings from both open houses:
 - Majority **support** for the need and approach of the project
 - **High** prioritization for Package 1
 - **Low** prioritization for Package 6, Package 7, and Package 8
 - There is a need for **expediency** in completing specific **projects**, including:
 - The projects included in **Package 1, Package 3, and Package 4**

- Findings, continued:
 - There is a critical need for **improvements that will address safety, capacity, and livability issues**
 - Mixed support for **roundabouts**
 - Mixed support for **reducing/increasing vehicle capacity**
 - **Concern about funding**
 - Concern about **impacts to rural land, wildlife, and natural habitats**

Next Steps

- Metro Get Moving 2020 Bond Measure on the November 3rd Ballot
- Jurisdictional actions will be taken to support the prioritized packages